

SOUTHWEST TRANSITWAY

Station Area Planning



STATION AREA PLANNING



The Southwest Transitway Current Route and Stations

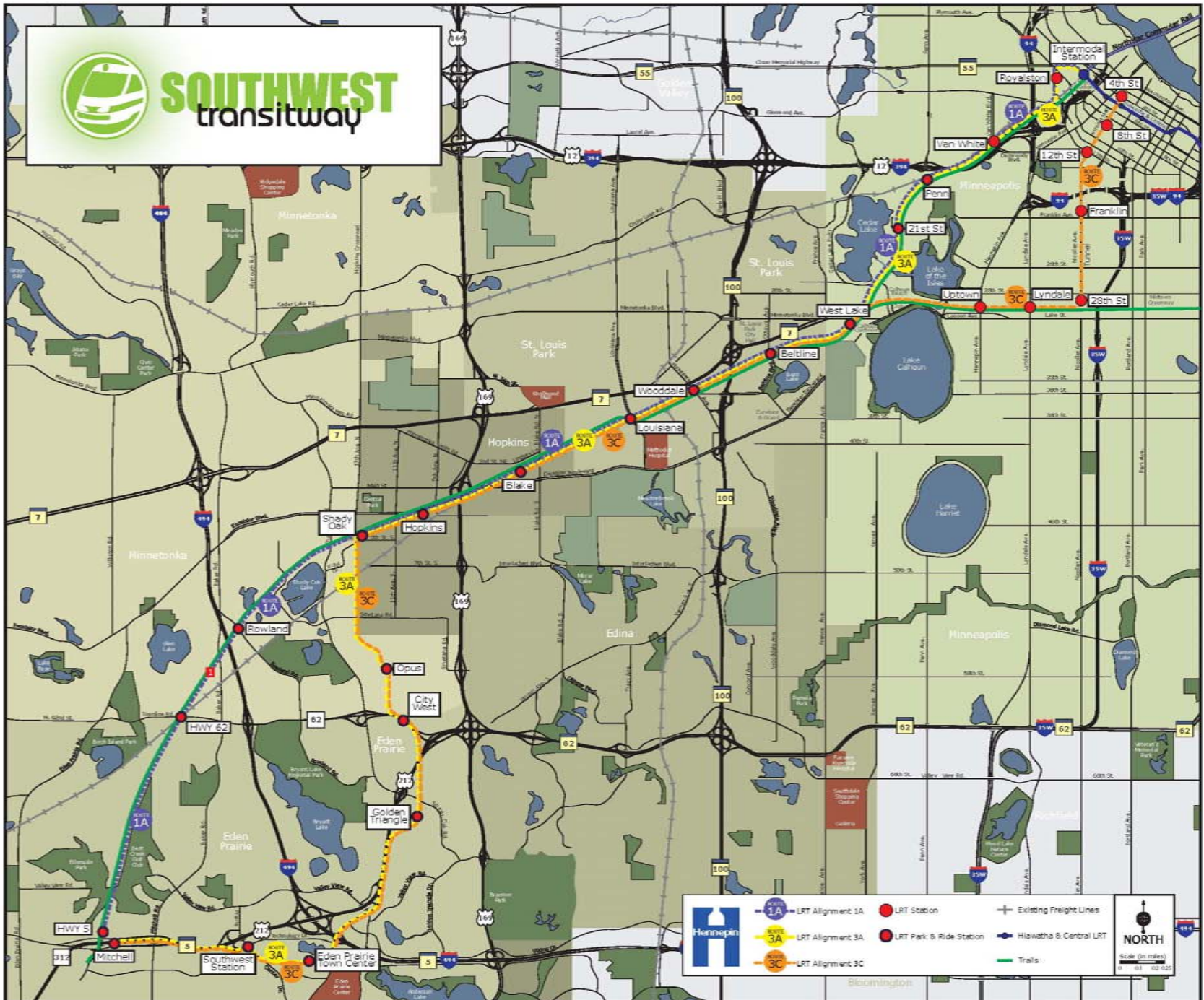


STATION AREA PLANNING





SOUTHWEST transitway



Hennepin

- 1A LRT Alignment 1A
- 3A LRT Alignment 3A
- 3C LRT Alignment 3C
- Red dot: LRT Station
- Red circle: LRT Park & Ride Station
- Blue line: Existing Freight Lines
- Blue line: Hiawatha S. Central LRT
- Green line: Trails

NORTH

Scale (in miles)
0 0.5 1 1.5 2

STATION AREA PLANNING



BLAKE STATION AREA



STATION AREA PLANNING



Principles

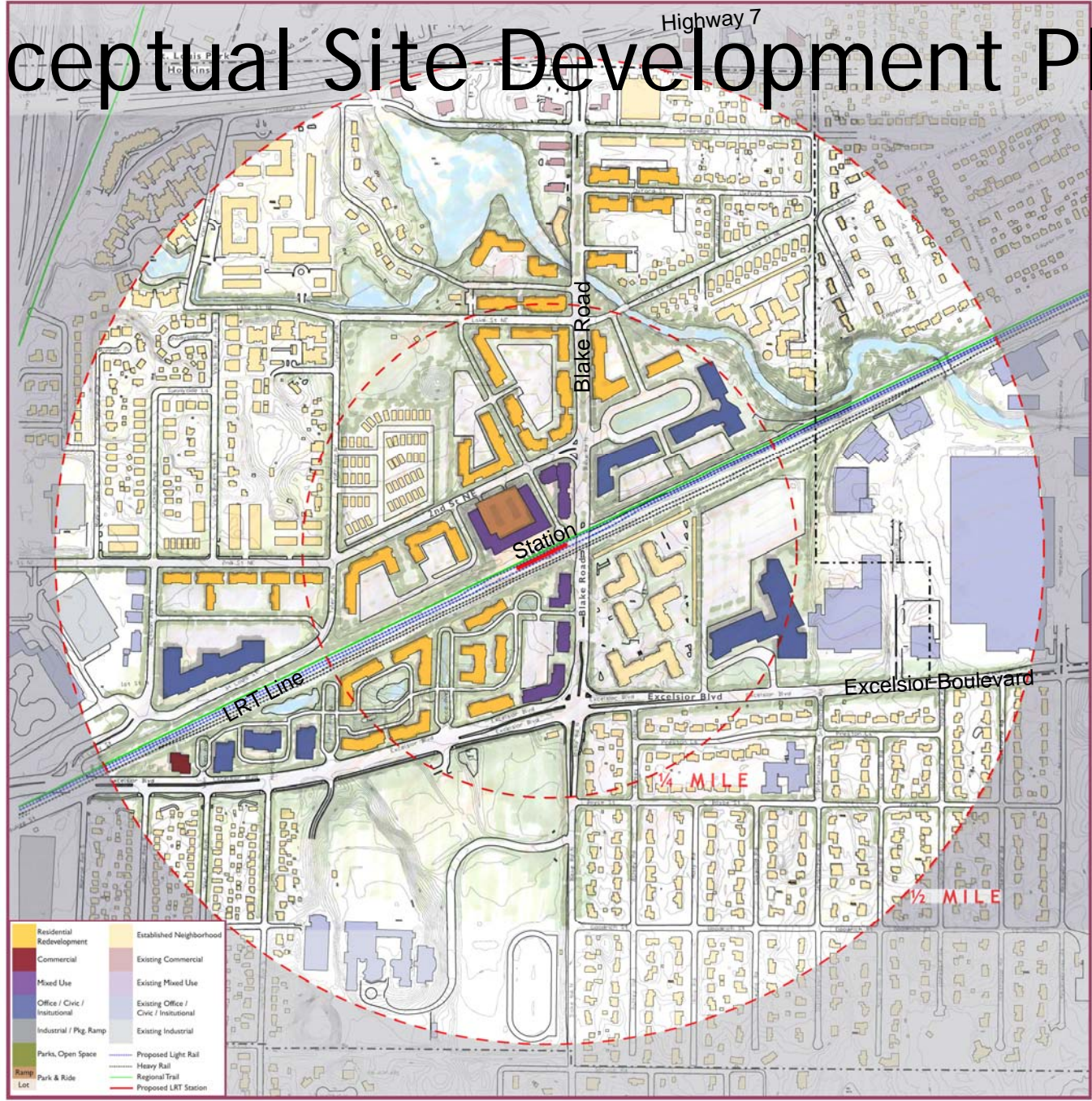
- Revitalize the East End
- Improve pedestrian connections and overall circulation and access
- Connect to Excelsior Boulevard
- Connect to Cargill Development
- Complement but don't compete with Main Street



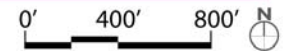
STATION AREA PLANNING



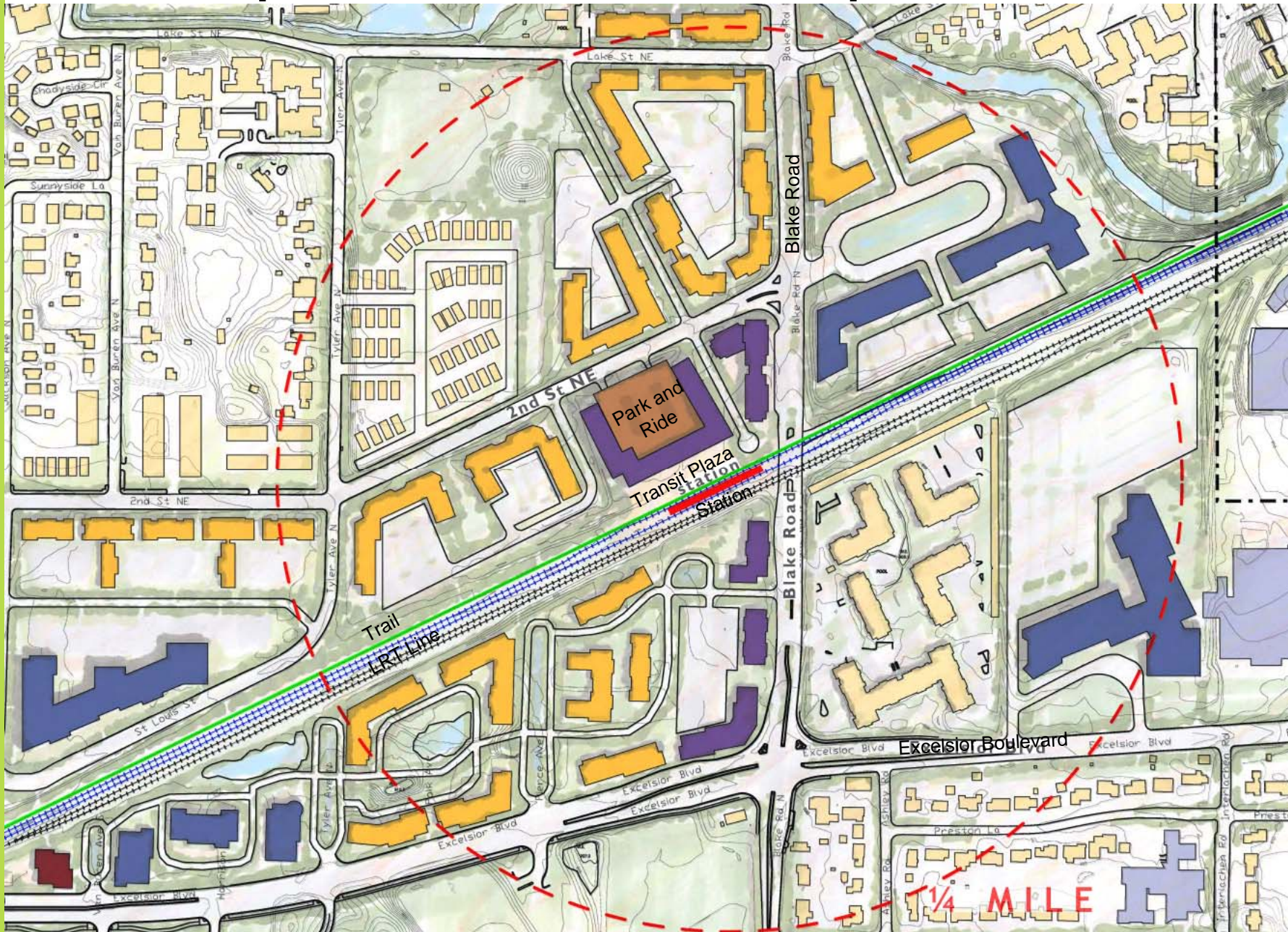
Conceptual Site Development Plan



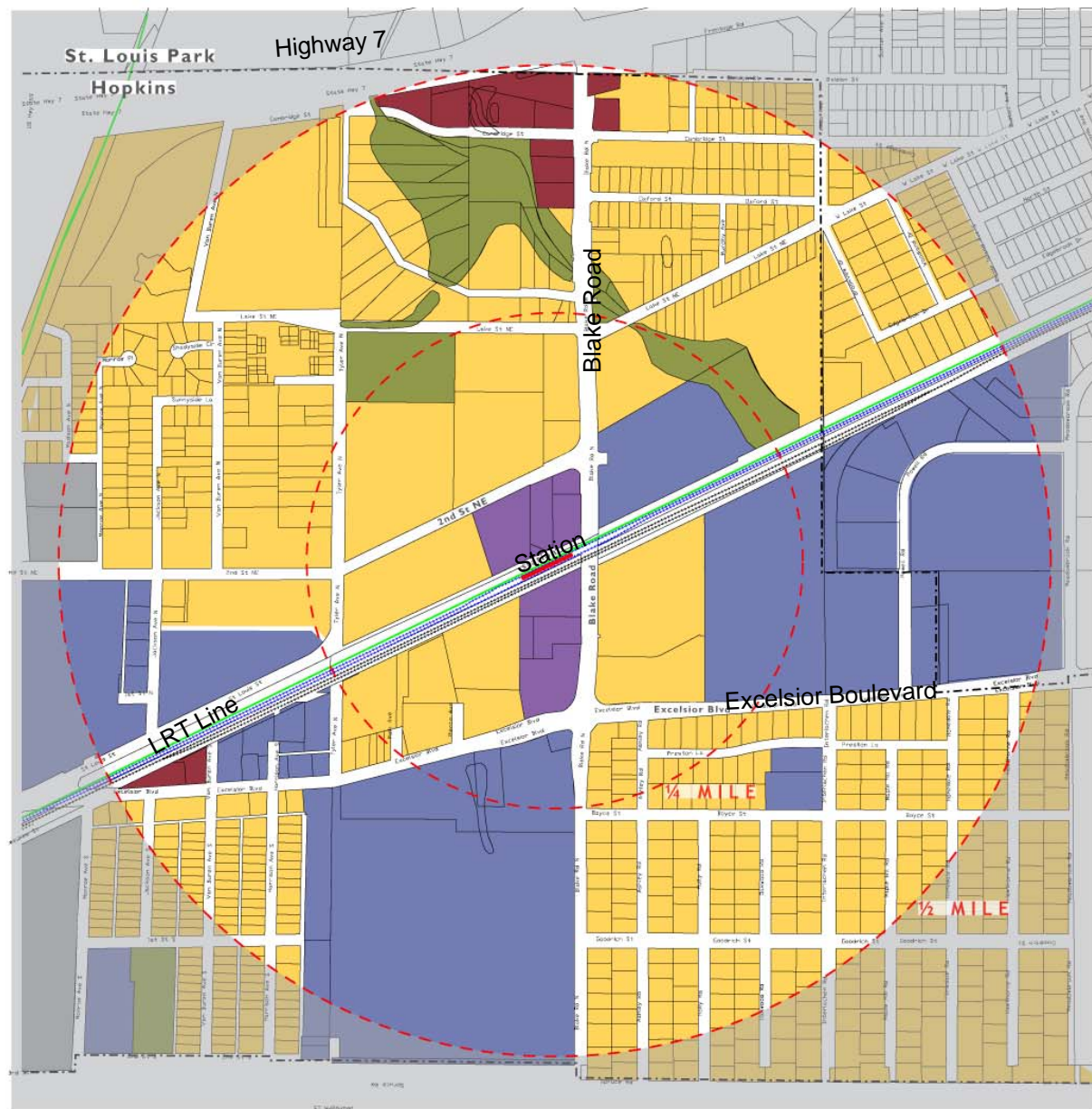
BLAKE CONCEPTUAL SITE DEVELOPMENT PLAN



Conceptual Site Development Plan



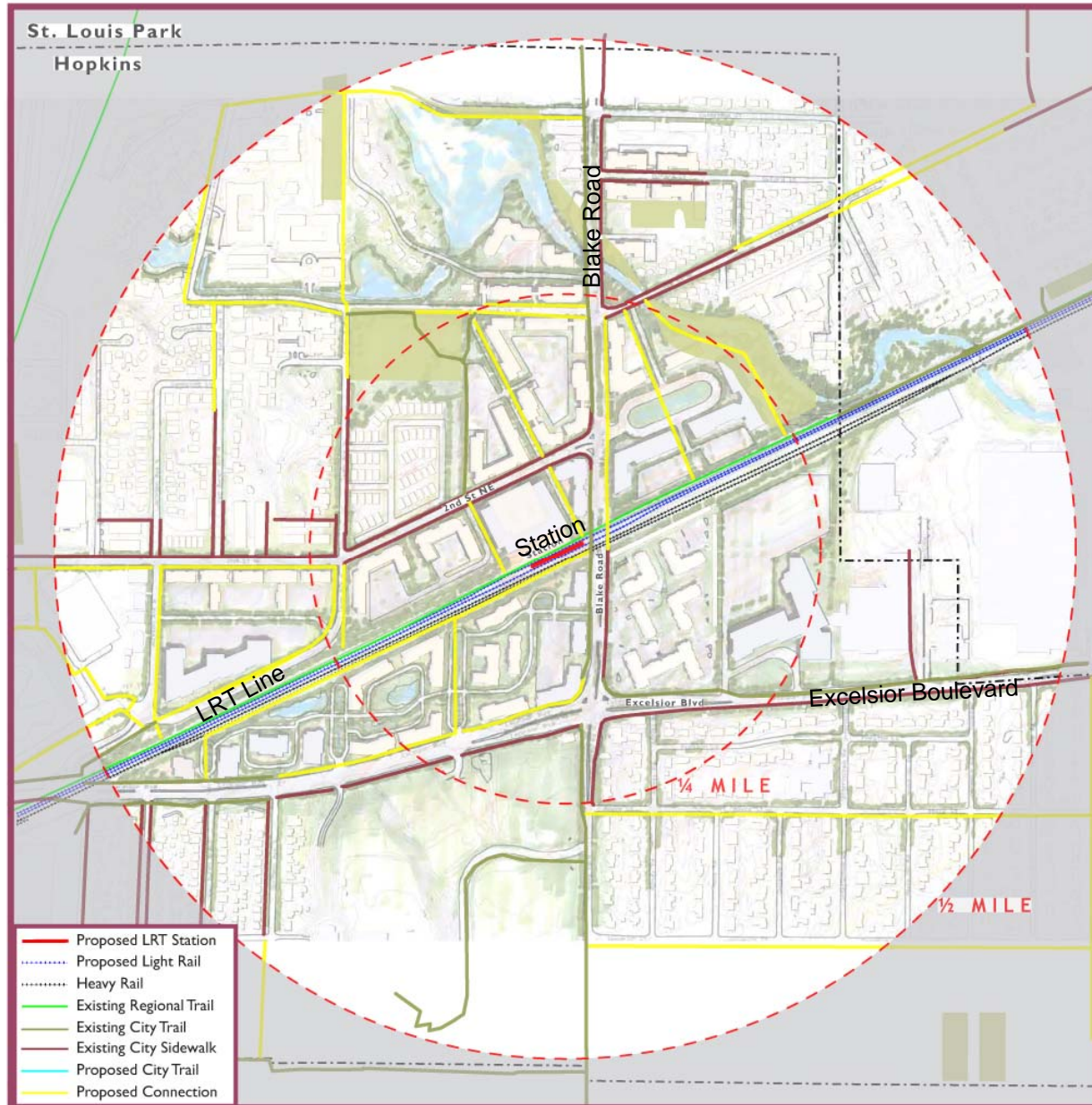
Land Use Plan



LAND USE PLAN



Pedestrian Access Plan



Bird's Eye View of Existing



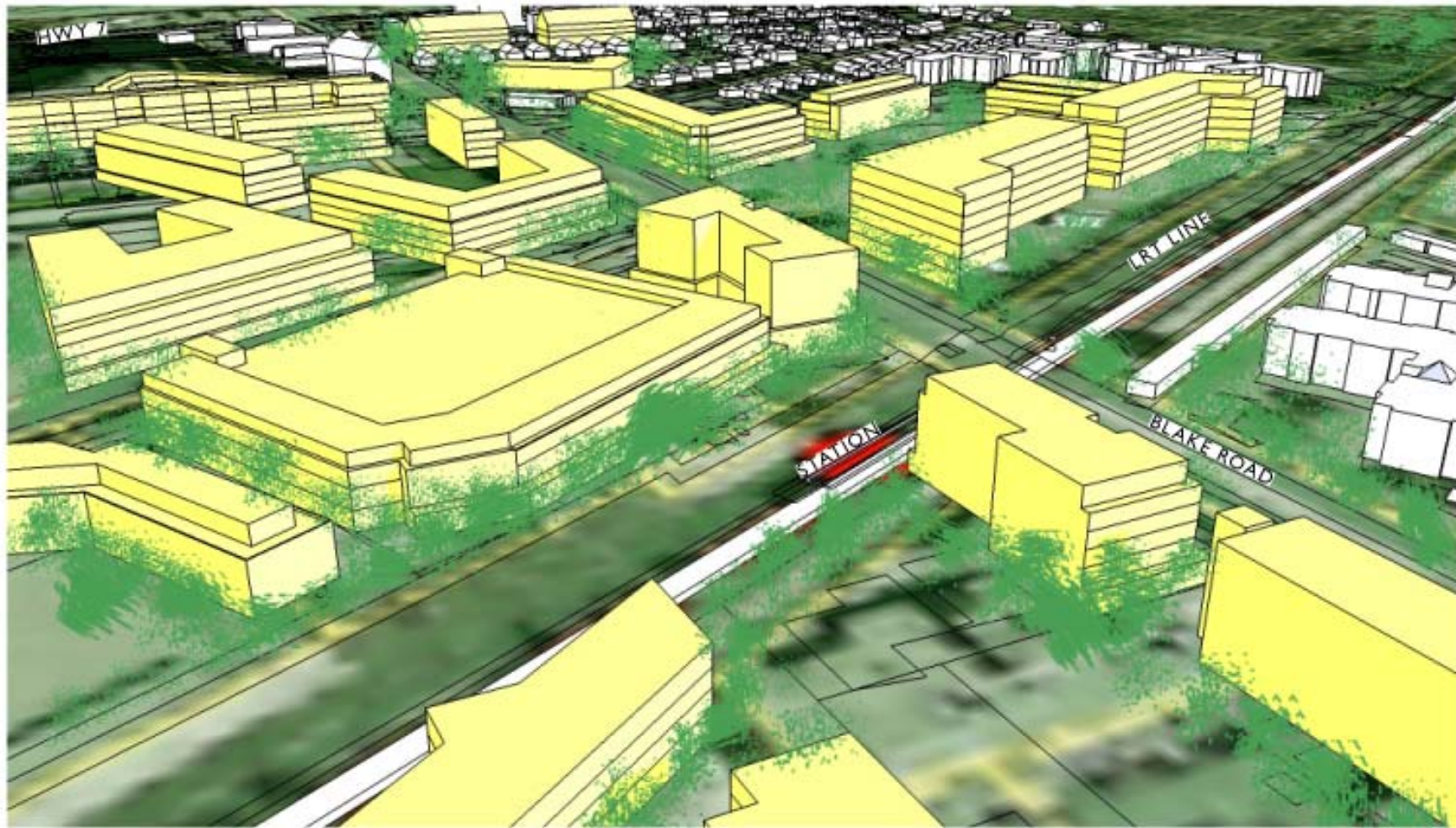
SOUTHWEST
transitway

STATION AREA PLANNING

HAY DOBBS



Bird's Eye View of Proposed



STATION AREA PLANNING



Illustrative View of Proposed



STATION AREA PLANNING



DOWNTOWN HOPKINS STATION AREA



STATION AREA PLANNING



Principles

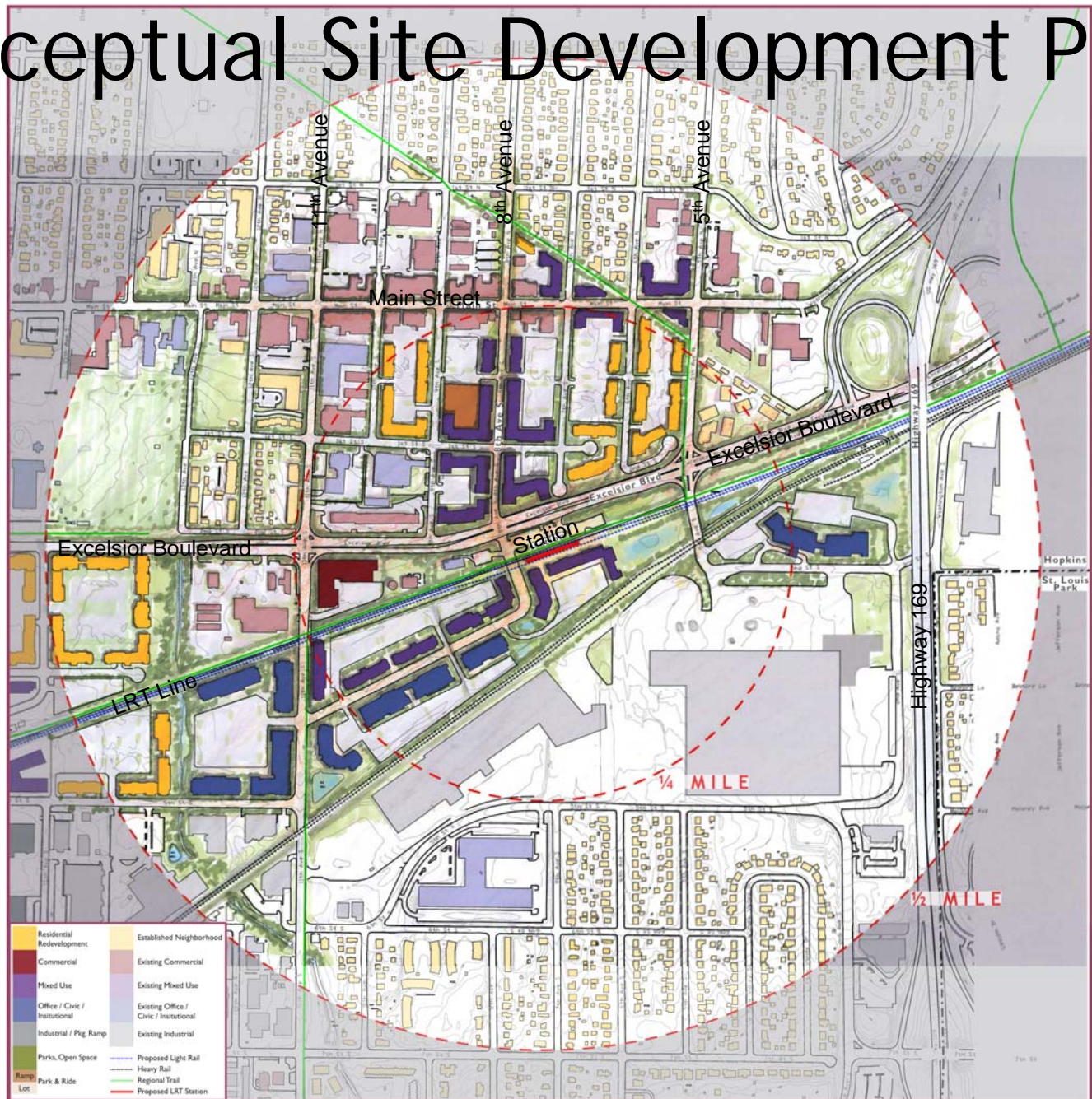
- Establish strong connection to Main Street
- Limit Parking
- Make station “THE” Hopkins Station
- Create a Destination
- Build on Success of Main Street



STATION AREA PLANNING

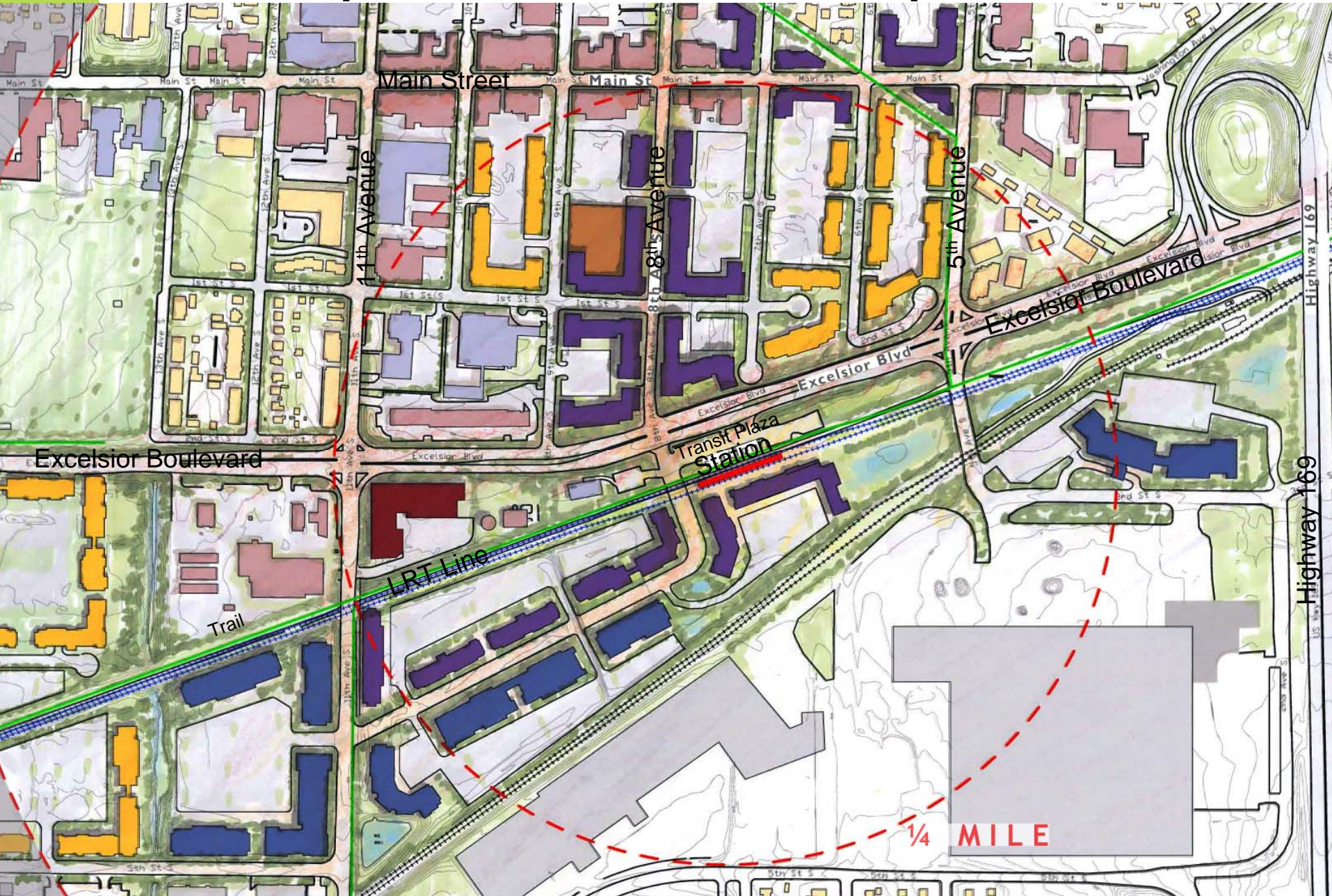


Conceptual Site Development Plan

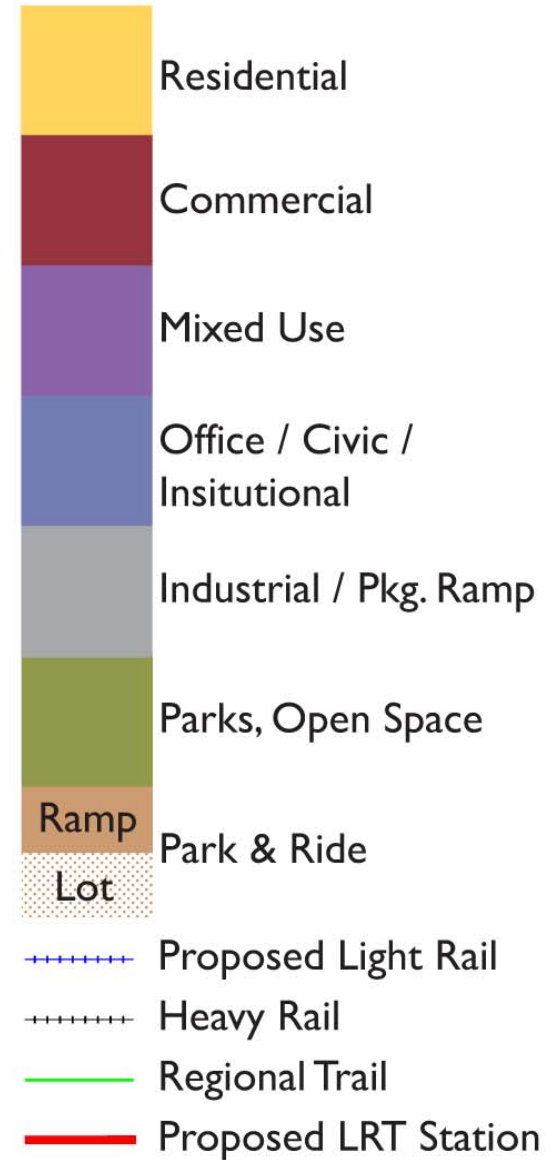


DOWNTOWN HOPKINS CONCEPTUAL SITE DEVELOPMENT PLAN 0' 400' 800' N

Conceptual Site Development Plan



Land Use Plan



LAND USE PLAN



Pedestrian Access Plan



Bird's Eye View of Existing



SOUTHWEST
transitway

STATION AREA PLANNING

HAY DOBBS



Bird's Eye View of Proposed



SOUTHWEST
transitway

STATION AREA PLANNING



Proposed View of 8th Avenue



HAY DOBBS P.A.

Proposed View of 8th Avenue



SHADY OAK STATION AREA



STATION AREA PLANNING



Principles

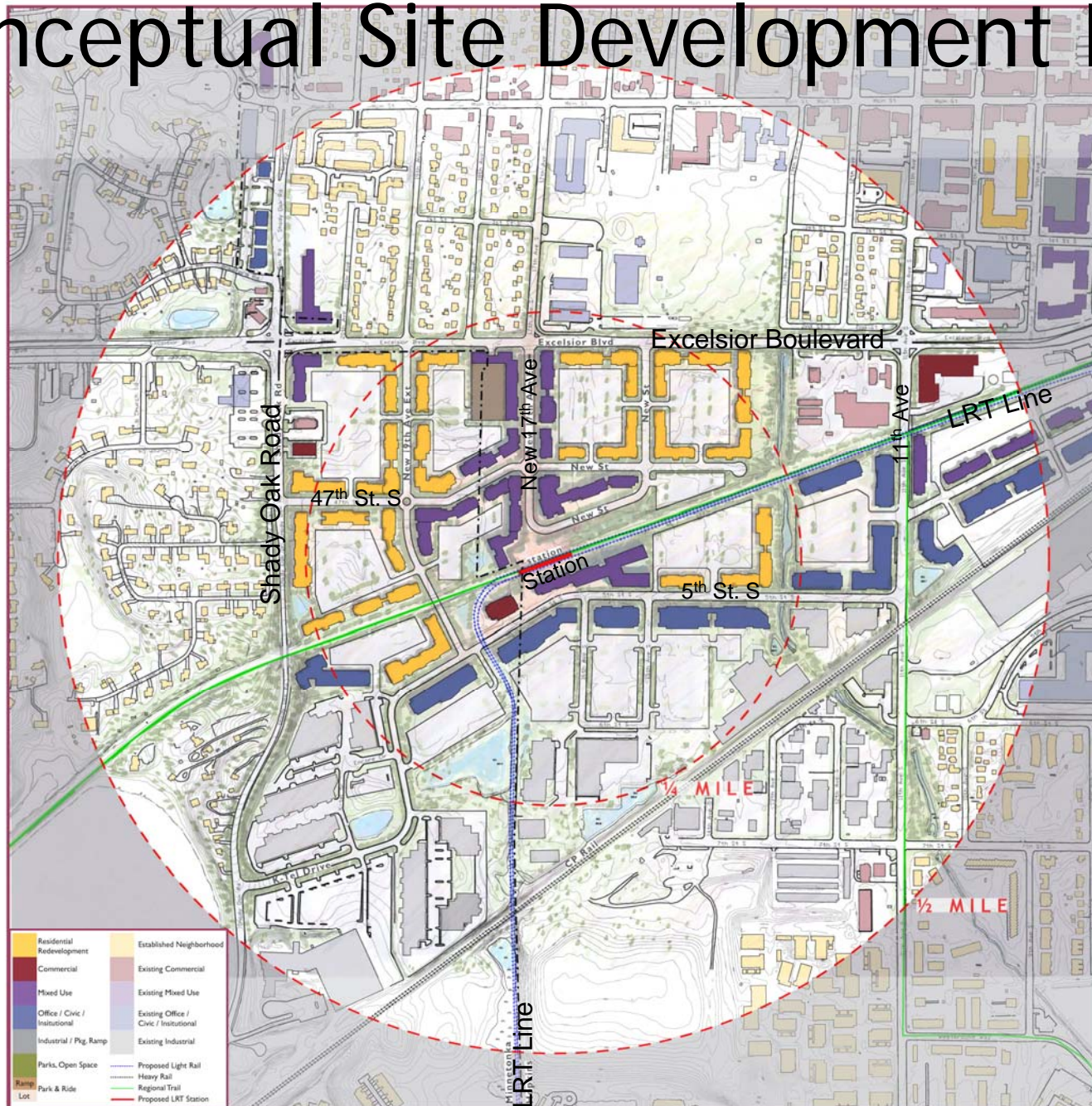
- Re-invent/Re-define the area
- Intensify uses
- Connect to trails and natural features
- Better connect to existing roadways
- Provide easy access to station and park and ride facility



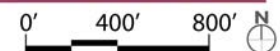
STATION AREA PLANNING



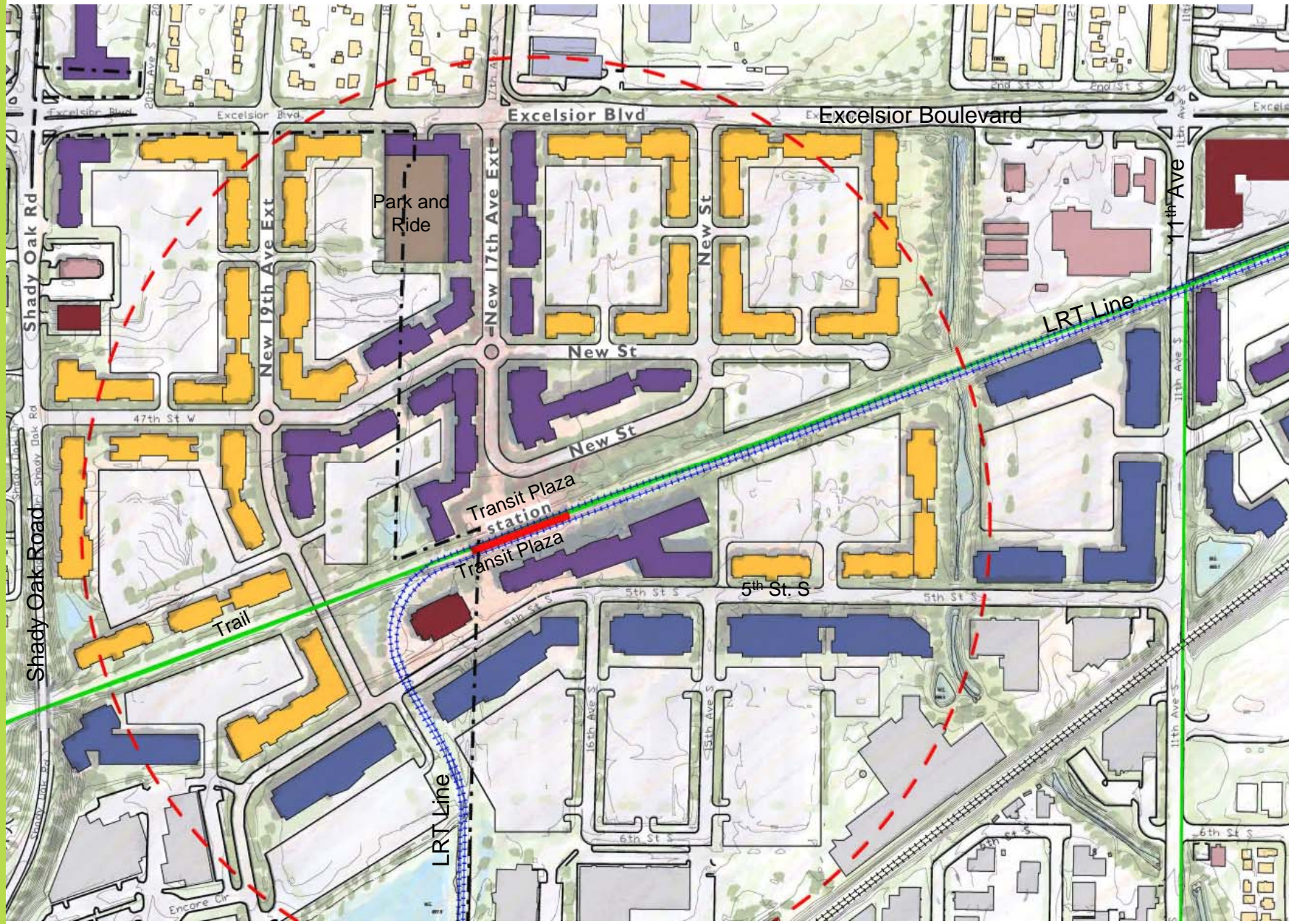
Conceptual Site Development Plan



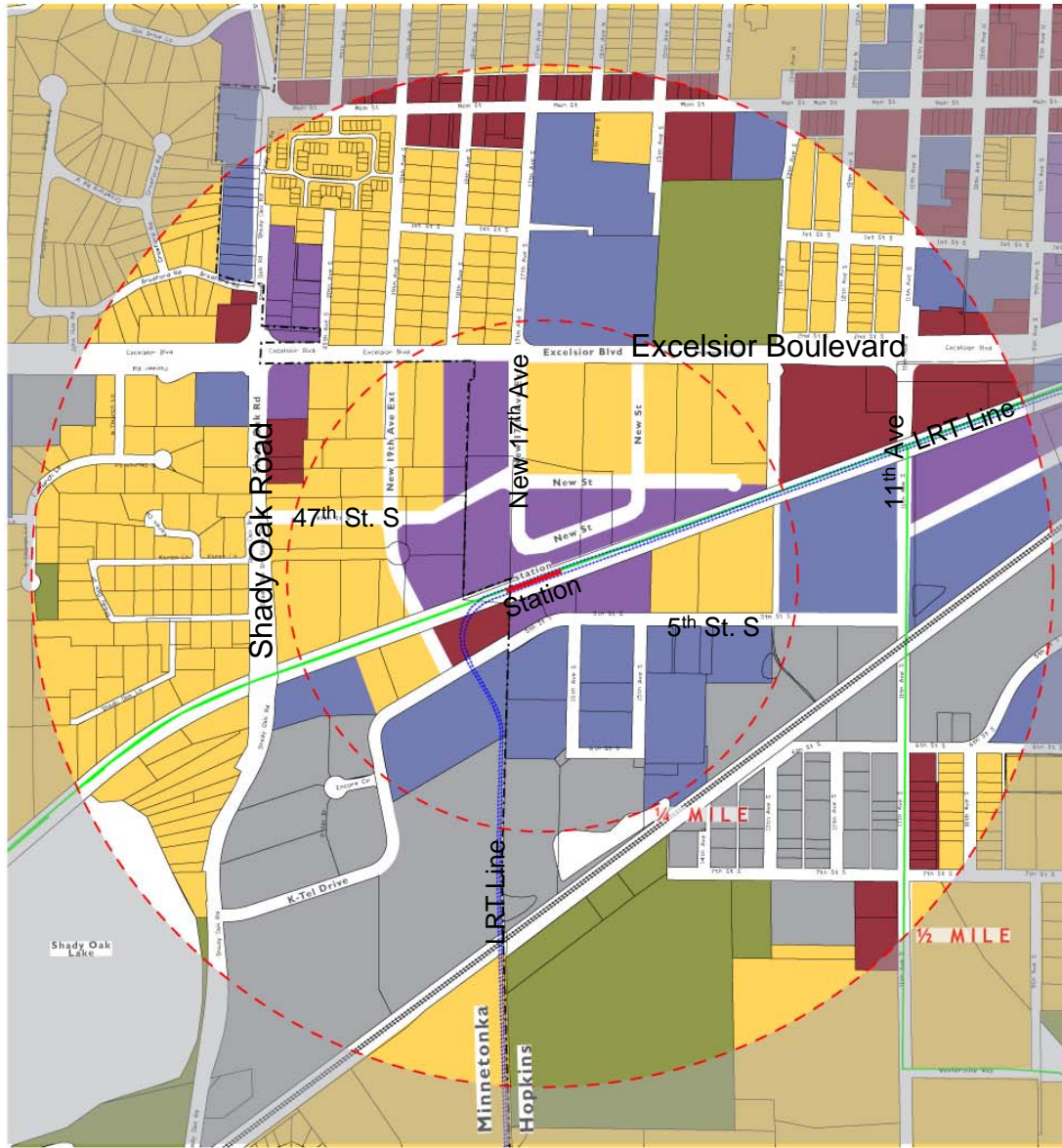
SHADY OAK CONCEPTUAL SITE DEVELOPMENT PLAN



Conceptual Site Development Plan



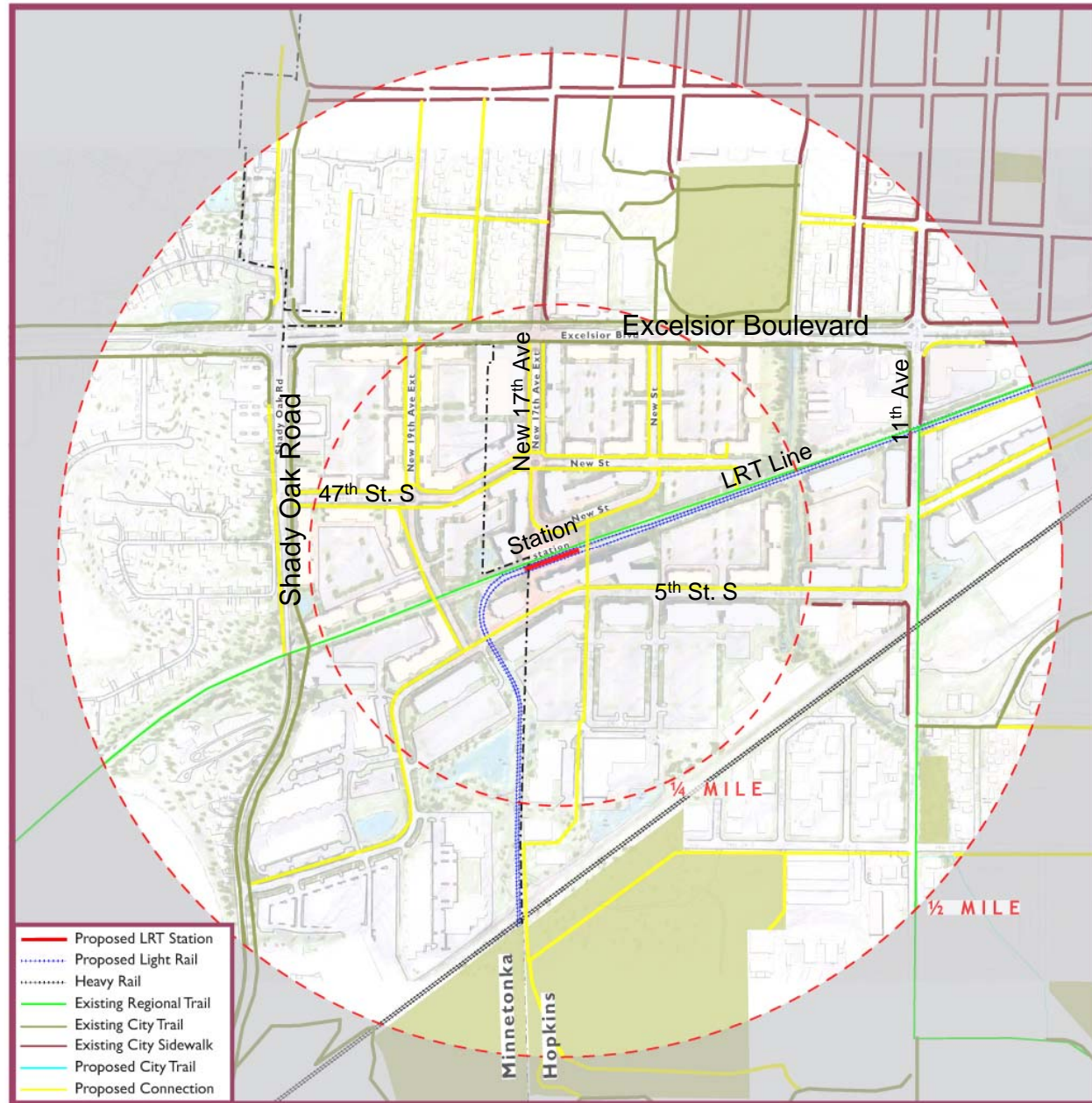
Land Use Plan



LAND USE PLAN



Pedestrian Access Plan



Looking South View of Existing



STATION AREA PLANNING



Looking South View of Proposed



STATION AREA PLANNING



Illustrative View of Proposed



RENDERING LOOKING FROM EXCELSIOR BLVD DOWN THE NEW 17TH ST EXTENSION TOWARDS THE SHADY OAK STATION.



STATION AREA PLANNING



North approach to Shady Oak Transit Plaza



STATION AREA PLANNING



Proposed View-Shady Oak Transit Plaza



STATION AREA PLANNING



Thank you



STATION AREA PLANNING

