



**SOUTHWEST**  
transitway

green means go.

## **Policy Advisory Committee (PAC)**

May 12, 2010

EDEN PRAIRIE ■ MINNETONKA ■ EDINA ■ HOPKINS ■ ST. LOUIS PARK ■ MINNEAPOLIS

HENNEPIN COUNTY REGIONAL RAILROAD AUTHORITY - SPONSOR





**SOUTHWEST**  
transitway

green means go.

## **Southwest Project Update Public Meetings**

**May 18, 2010 (11:30 am - 1:00 pm)**

**(Community Meetings) Minneapolis Central Library  
300 Nicollet Mall  
Minneapolis, MN 55401**

**May 19, 2010 (5:00 pm - 7:00 pm)**

**(Community Meetings) SouthWest Transit Station  
13500 Technology Drive  
Eden Prairie, MN 55344**

**May 20, 2010 (5:00 pm - 7:00 pm)**

**(Community Meetings) St. Louis Park City Hall  
5005 Minnetonka Blvd.  
St. Louis Park, MN 55416**

EDEN PRAIRIE ■ MINNETONKA ■ EDINA ■ HOPKINS ■ ST. LOUIS PARK ■ MINNEAPOLIS

HENNEPIN COUNTY REGIONAL RAILROAD AUTHORITY - SPONSOR





**SOUTHWEST**  
transitway

green means go.

## Open House Format

### 3 Informational Stations:

- **STATION #1: DEIS UPDATE**
- **STATION #2: HISTORIC AND 4(f) RESOURCES**
- **STATION #3: LOCALLY PREFERRED ALTERNATIVE (LPA)  
and OTHER PROJECT UPDATES**





**SOUTHWEST**  
transitway

green means go.

## **STATION #1: DEIS UPDATE**

- **Map of Alternatives Considered in the DEIS**
- **Project Schedule Exhibit**
- **NEPA Process Exhibit**
- **Public Process to date Exhibit**
- **Outline DEIS Topics Exhibit**
- **Map of Year 2030 Build/No Build Congestion**
- **Noise & Vibration Overview Exhibit**
- **Map of Noise & Vibration Resources**
- **Map of Water Resources (Water bodies, wetlands, floodplains etc.)**
- **Map of Community Facilities (SWT trails, parks, schools, etc)**

EDEN PRAIRIE ■ MINNETONKA ■ EDINA ■ HOPKINS ■ ST. LOUIS PARK ■ MINNEAPOLIS

HENNEPIN COUNTY REGIONAL RAILROAD AUTHORITY - SPONSOR





**SOUTHWEST**  
transitway

green means go.

## DEIS Schedule

- **DEIS has been delivered to Hennepin County/Met Council for review**
- **FTA administrative review – June (followed by two weeks for revisions)**
- **FTA legal sufficiency review – mid-July to mid-August (followed by one week for revisions)**
- **Circulate DEIS/comment period – September/October**
- **Public Hearing tentatively planned for mid-late September**

EDEN PRAIRIE ■ MINNETONKA ■ EDINA ■ HOPKINS ■ ST. LOUIS PARK ■ MINNEAPOLIS

HENNEPIN COUNTY REGIONAL RAILROAD AUTHORITY - SPONSOR





green means go.

## DEIS Contents

- Chapter 1 – Purpose and Need**
- Chapter 2 – Alternatives Considered**
- Chapter 3 – Social Effects**
- Chapter 4 – Environmental Effects**
- Chapter 5 – Economic Effects**
- Chapter 6 – Transportation Effects**
- Chapter 7 – Section 4(f)**
- Chapter 8 – Financial Analysis**
- Chapter 9 – Secondary and Cumulative Impacts**
- Chapter 10 – Evaluation of Alternatives**
- Chapter 11 – Public and Agency Involvement**

EDEN PRAIRIE ■ MINNETONKA ■ EDINA ■ HOPKINS ■ ST. LOUIS PARK ■ MINNEAPOLIS

HENNEPIN COUNTY REGIONAL RAILROAD AUTHORITY - SPONSOR





**SOUTHWEST**  
transitway

green means go.

## DEIS Samples

**CCLRT – Section 4.5 (Ecology and Habitat)**

**CCLRT – Section 6.1 (Roadway Impacts)**

<http://www.metrocouncil.org/transportation/ccorridor/DEIS/DEIS.htm>

EDEN PRAIRIE ■ MINNETONKA ■ EDINA ■ HOPKINS ■ ST. LOUIS PARK ■ MINNEAPOLIS

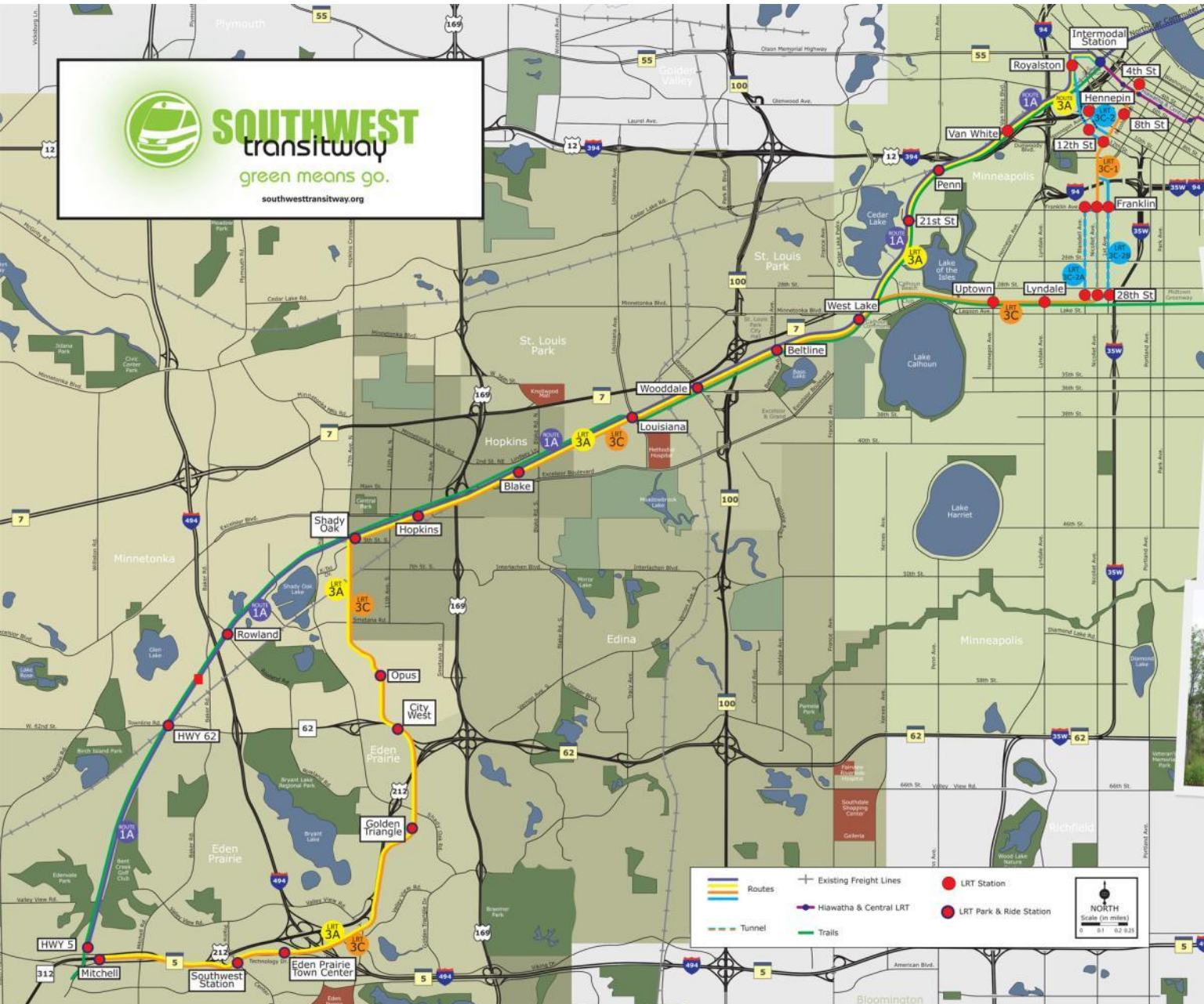
HENNEPIN COUNTY REGIONAL RAILROAD AUTHORITY - SPONSOR





**SOUTHWEST**  
transitway  
green means go.

southwesttransitway.org



	Routes		Existing Freight Lines		LRT Station
			Hiawatha & Central LRT		LRT Park & Ride Station
	Tunnel		Trails		

**NORTH**  
Scale (in miles)  
0 0.1 0.2 0.3

