

Correctional Out-of-Home Placement Trends Q3 2017

Total Out of Home Placements

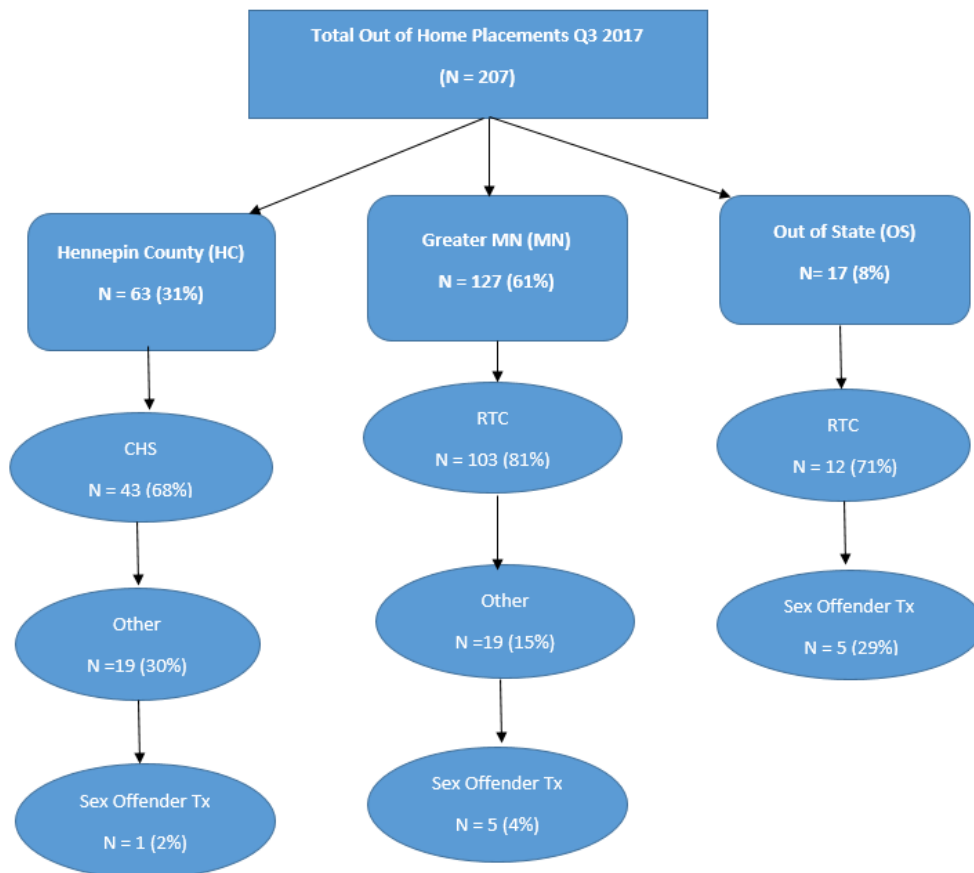
Figure 1¹ shows the breakout of out of home placements. Overall, there were 207 out of home placements in quarter three of 2017. Thirty-one percent were HC Placements, 61% were greater Minnesota placements and 8% were out of state placements.

Figure 1. Total Out of Home Placements Q3 2017

February 2018

Jessica Wildermuth,
Snr Planning Analyst

Danette Buskovich,
Manager



¹ Numbers represent number of out of home placements not number of youth. Youth may have more than one placement within the reporting period.

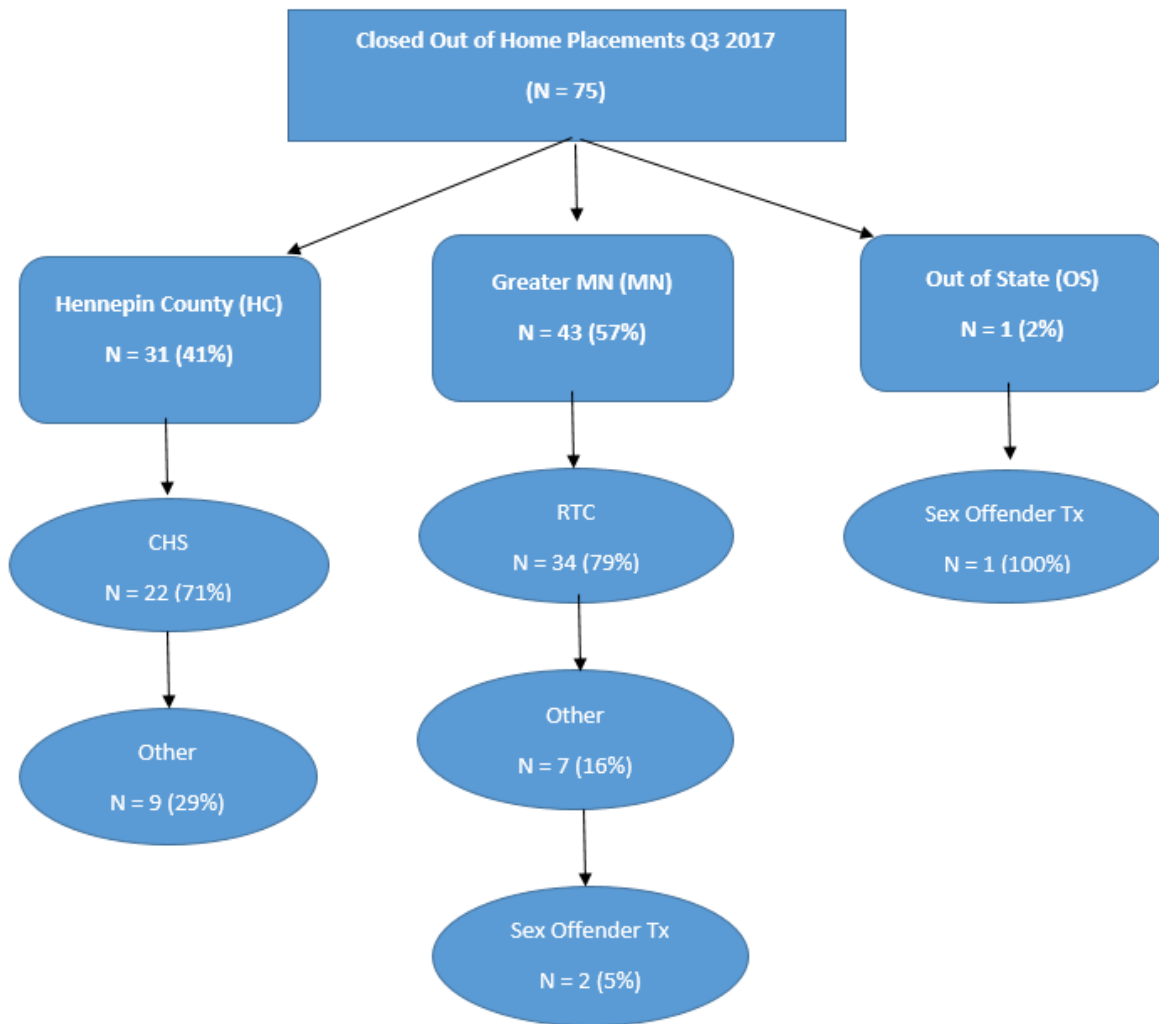


Closed Placements

Figure 2² shows the breakout of closed out of home placements. Of the 207 total placements, 75 closed during quarter three of 2017.

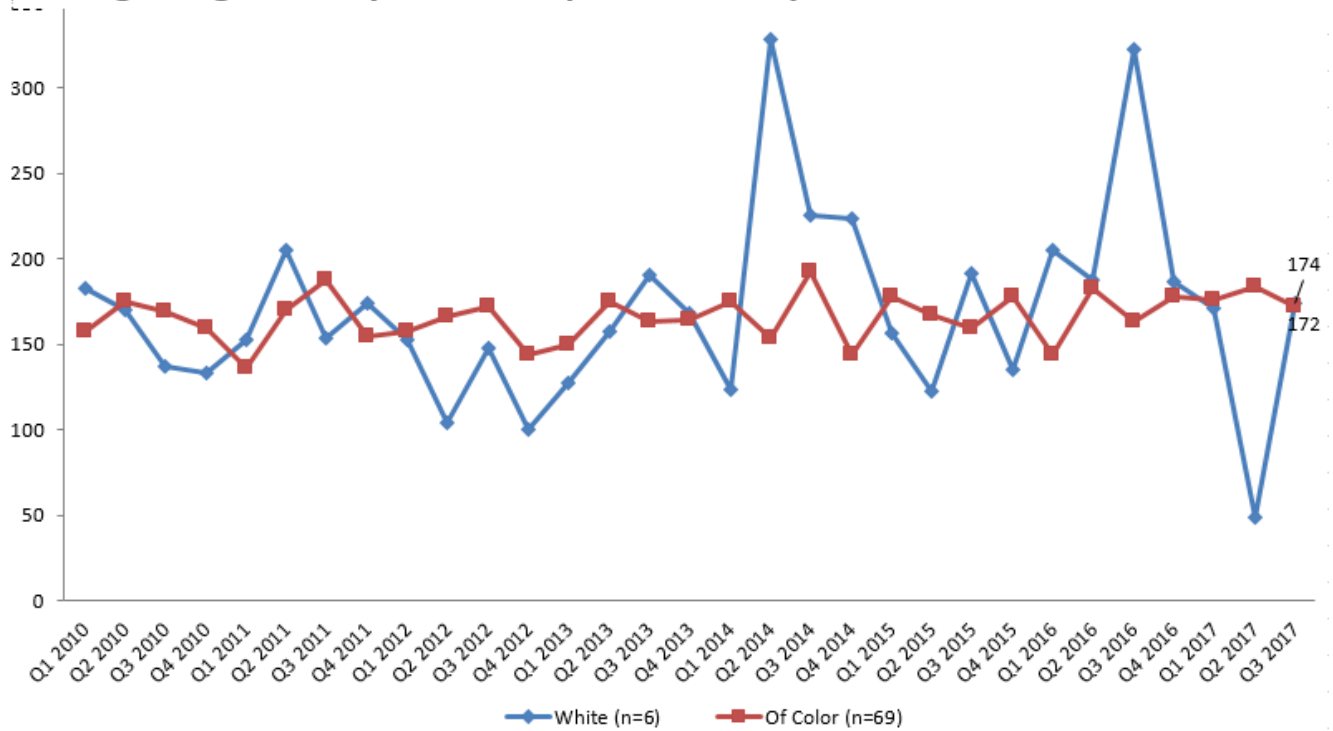
Forty-one percent were HC Placements, 57% were greater Minnesota placements and 2% were out of state placements.

Figure 2. Closed Out of Home Placements Q3 2017



² Numbers represent number of closed out home placements not number of youth. Youth may have more than one placement within the reporting period.

Average length of stay for closed placements by race



Ave LOS for closed placements by race (detail)

	Q3 13	Q4 13	Q1 14	Q2 14	Q3 14	Q4 14	Q1 15	Q2 15	Q3 15	Q4 15	Q1 16	Q2 16	Q3 16	Q4 16	Q1 17	Q2 17	Q3 17
Amer Indian/ AK Native	163	142	164	124	172	70	149	149	140	208	120	133	177	283	288	172	104 n=4
Asian	205			200		147		388			239	893		205	216	176	
Black/ African American	156	181	174	174	190	152	185	161	152	156	144	174	147	173	174	197	191 n=49
Other Race	233	17	171	179	200	151	141	166	115	175	186	222	161	139	159	176	97 n=7
Two or more Races	219	54	186	143	205	141	181	165	237	327	165	200	228	193	97	128	157 n=9
White	191	168	124	329	226	224	157	123	192	135	205	188	323	187	171	49	174 n=6
Refused/ Unknown		125			190	114		182			2		372				
Total Closed	104	96	99	89	96	105	96	164	162	175	148	183	173	178	175	177	172 n=75

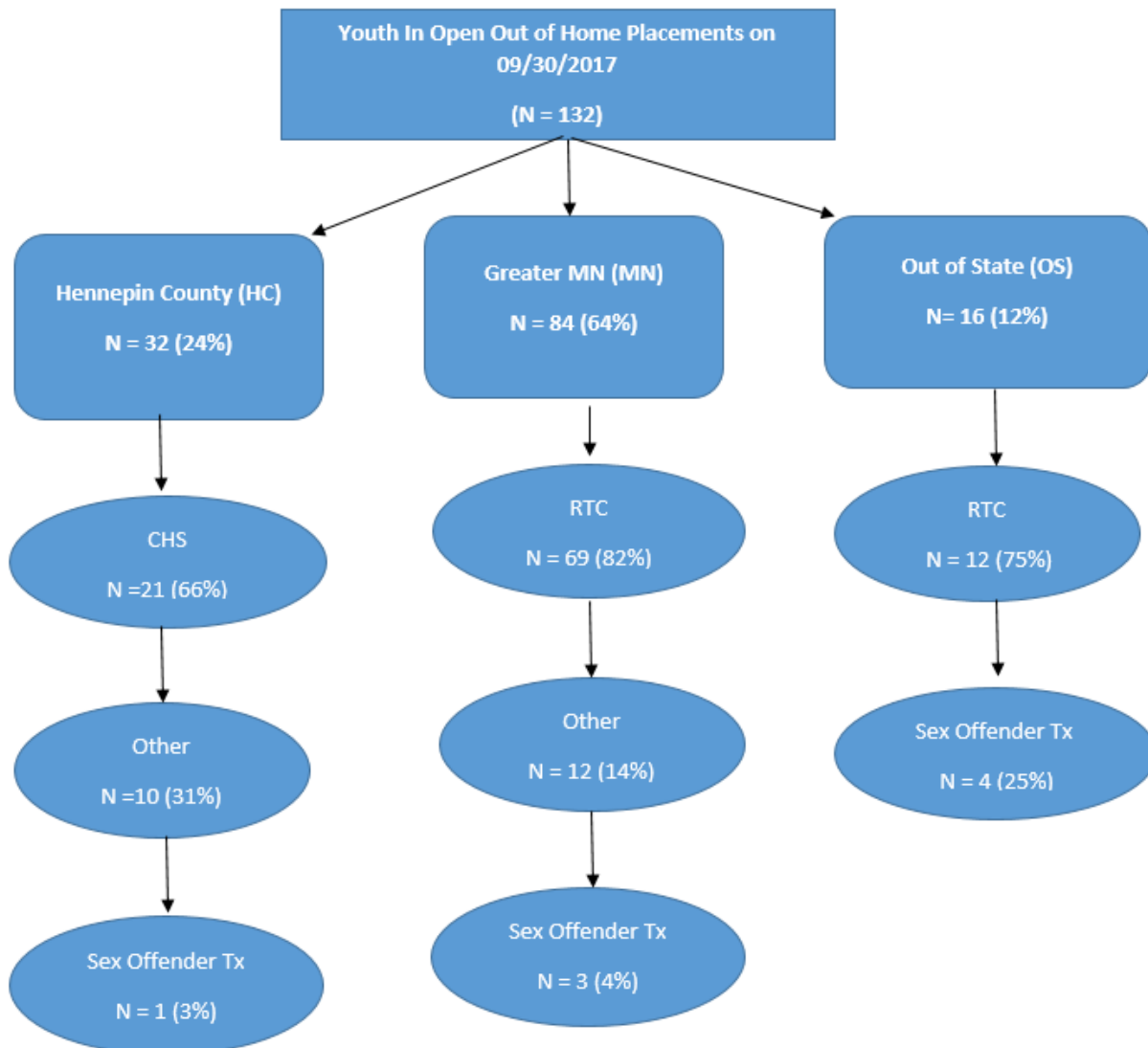
Open Placements

There were 132 youth in placement on the last day of the quarter (September 30, 2017).

Twenty-four percent were youth in Hennepin County, 64% were youth in greater Minnesota placements and 12% were in an out of state placement (see Figure 3).

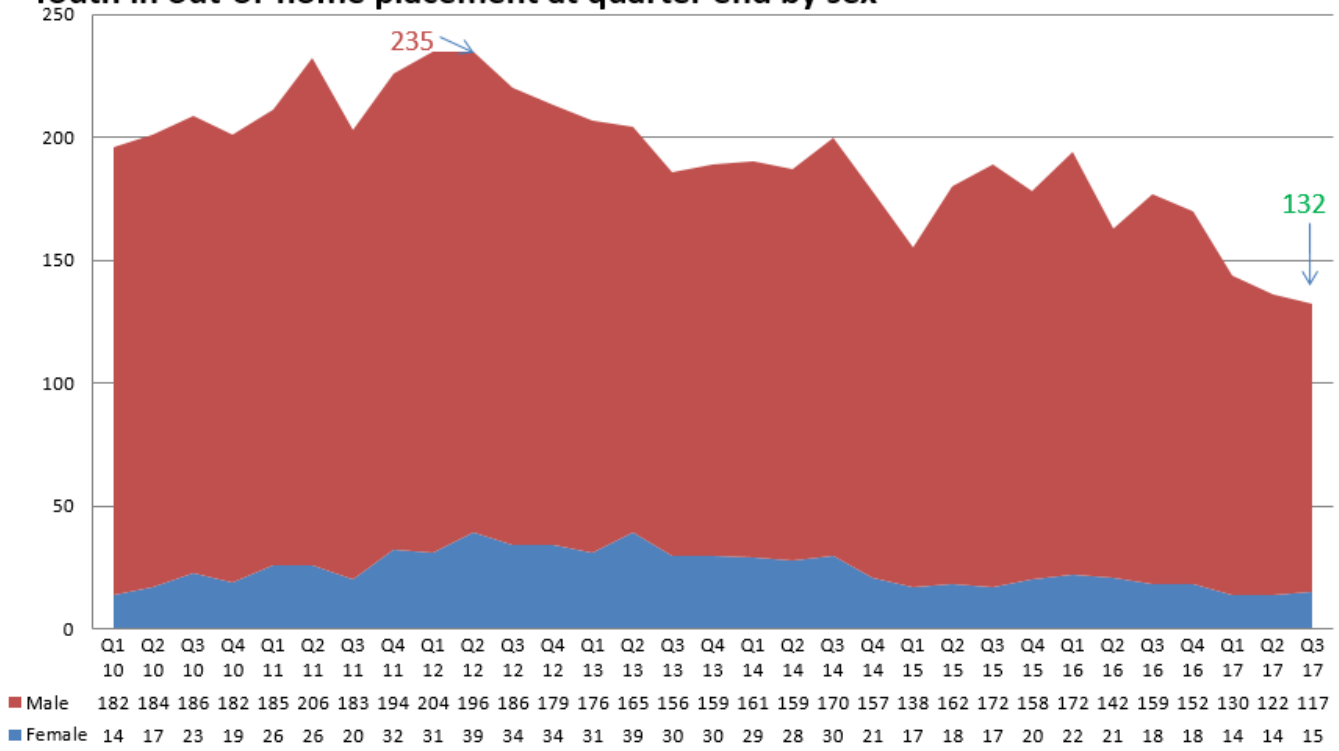
Most youth in Hennepin County on September 30th were at the CHS (66%). Slightly more than 8 in 10 (82%) youth placed in greater Minnesota were in an RTC, as were three-quarters (75%) of youth placed outside of Minnesota.

Figure 3. Open Out of Home Placements Q3 2017



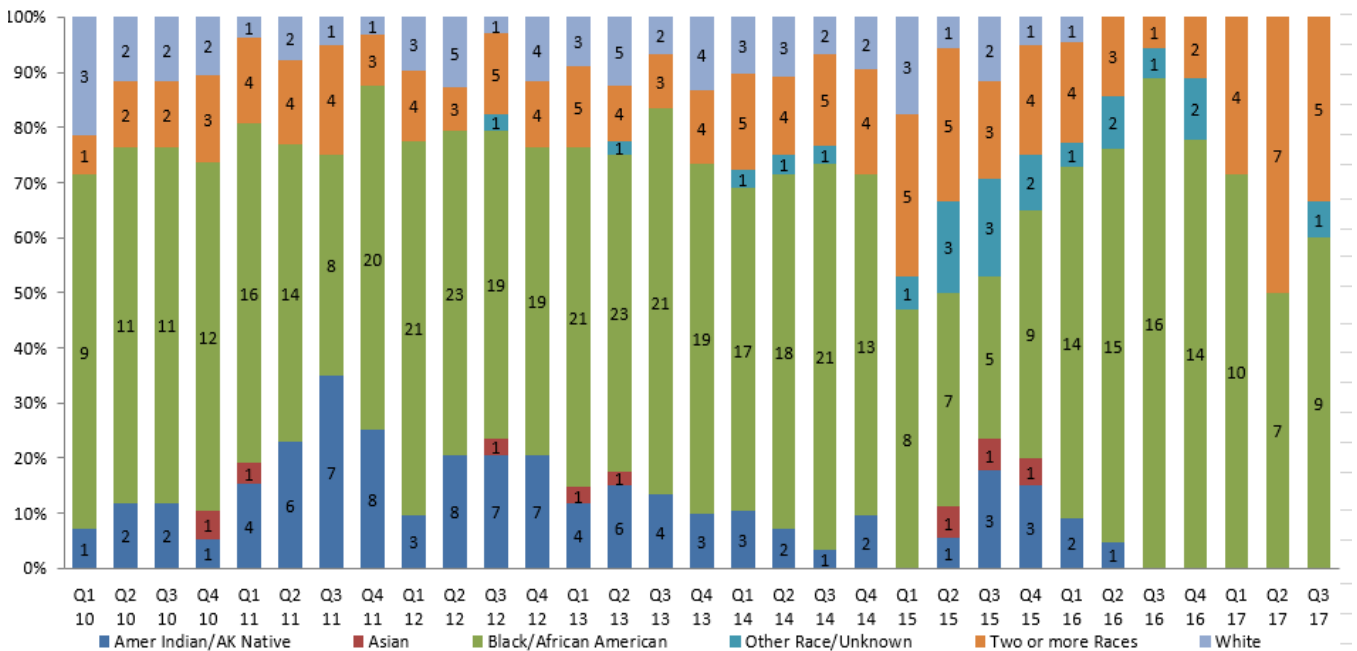
The chart below shows the number of male and female youth in out of home placement on the last day of the quarter (September 30, 2017).

Youth in out-of-home placement at quarter end by sex

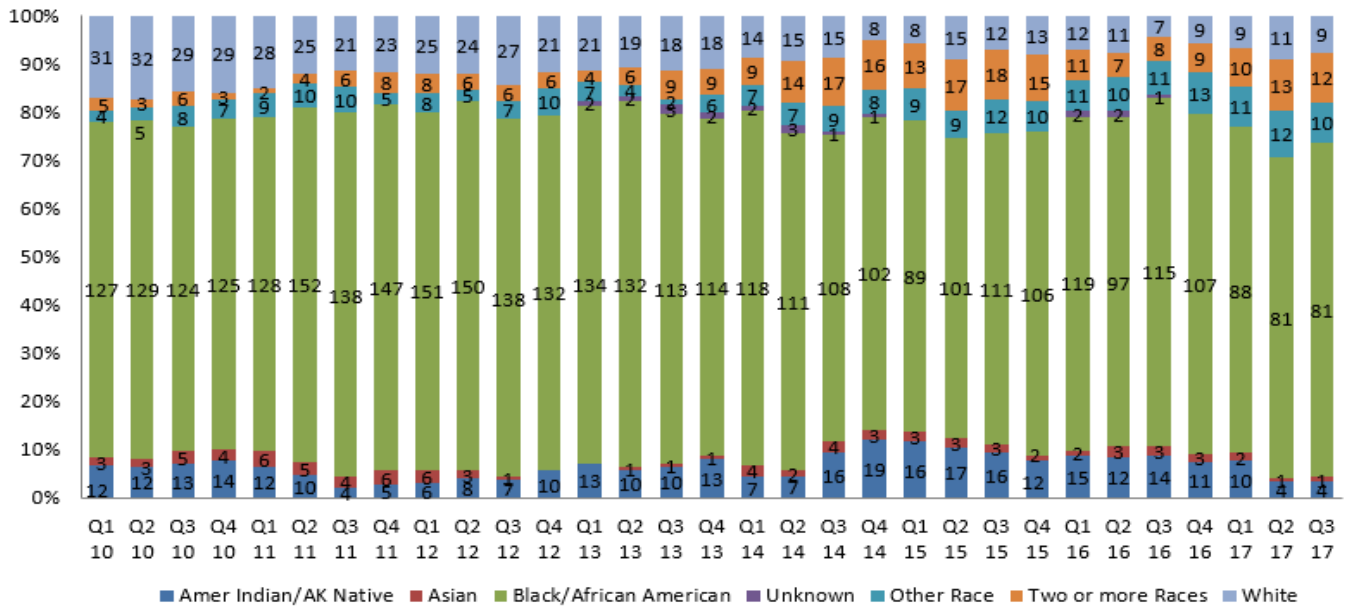


The following two charts show the race of male and female youth in placement on the last day of the quarter.

Number and percent of girls in placement by race



Number and percent of boys in placement by race



Hennepin County

The table below details the number of youth open on the last day of the quarter for each placement location in Hennepin County broken out by placement type and by gender and race.

	Boys (n=27)		Girls (n=5)	
	Of Color	White	Of Color	White
CHS				
AFSHS Long Term	4	2		
Focus RTC			3	0
Focus Short Term			1	0
STAMP	2	0		
STAMP Plus	9	0		
Totals	15	2	4	0
Other Placements				
Family Alternatives	1	0		
HSPHD Foster			1	0
Jordan House	1	0		
PIR Braza House	4	0		
VOA Foster Care	3	0		
Totals	9	0	1	0
Sex Offense Tx				
Alpha Human Services	1	0		
Totals	1	0		
Grand Totals	25	2	5	0

Greater Minnesota

The table below details the number of youth open on the last day of the quarter for each placement location in greater Minnesota broken out by placement type and by gender and race.

	Boys (n=77)		Girls (n=7)	
	Of Color	White	Of Color	White
RTCs				
Bar None ITC Evergreen	9	0		
Gerard Academy	1	0		
MNDOC Dakota Co			2	0
MNDOC Red Wing RTC	29	0		
The Hills Short Term			1	0
Woodland Hills RTC	23	2	1	0
Woodland Hills-MH	1	0		
Totals	63	2	4	0
Other Placements				
Other Co License	1	0		
Passageways			1	0
RS Eden Reentry-West	1	0		
St Joseph's Shelter	1	0	1	0
Steps of Success-And			1	0
Village Ranch Tier 1	2	0		
Woodland Hills SIL	3	1		
Totals	8	1	3	0
Sex Offense Tx				
New Trails GH	1	0		
MLA RTC	2	0		
Totals	3	0		
Grand Totals	74	3	7	0

Out of State

The table below details the number of youth open on the last day of the quarter for each placement location outside of Minnesota broken out by placement type and by gender and race.

	Boys (n=13)		Girls (n=3)	
	Of Color	White	Of Color	White
RTCs				
Benchmark	2	1		
Clarinda Academy	3	0	2	0
Eau Claire RTC	0	1		
Forest Ridge			1	0
Woodward Academy RTC	2	0		
Totals	7	2	3	0
Sex Offense Tx				
Woodward Academy SOT	2	2		
Totals	2	2		
Grand Totals	9	4	3	0

About this Report

The Department of Community Corrections and Rehabilitation has been tracking Correctional Out-of-Home Placements (COHP) for juvenile offenders since 2009. This report describes youth who were in out of home placement during the third quarter of 2017.

This report provides a breakdown of the youth in open and closed placements. Placements open on the last day of the quarter (i.e., September 30, 2017) are broken out by race and gender. Average length of stay is broken out by race and reported for closed placements. Placement Type is classified in several ways. Overall, placements are organized by Hennepin County (HC), Greater Minnesota (MN), and Out of State (OS). Within those categories, placements are broken out by Residential Treatment Center (RTC) placements, Sex Offender (SO) placements County Home School (CHS-HC only) placements, and other placements. Other placements include: Foster Homes, Shelters, Transition, Group Homes and Evaluation.

Data is pulled 45 days after each quarter ends from the juvenile case management information system (MAIn) using the COHP Population Report.