



## Correctional Out-of-Home Placement Trends Q1 2017

### About this Report

---

The Department of Community Corrections and Rehabilitation has been tracking Correctional Out-of-Home Placements (COHP) for juvenile offenders since 2009. This report describes youth who were in out of home placement during the first quarter of 2017.

This report provides a breakdown of the youth in placement by gender, race/ethnicity, offense type and average length of stay. Placement Type is classified in several ways: Other placements, Residential Treatment Center (RTC) placements, and Short-Term (ST) placements. Other placements include: Foster Homes, Shelters, Transition, Group Homes and Evaluation. Other placements are not included in the graphs that report on RTC or ST placements. RTC placements include: RTC as well as Sexual Offense Treatment. Short-term placements include: STAMP and STAMP PLUS.

Data is pulled 45 days after each quarter ends from the juvenile case management information system (MAIn) using the COHP Population Report. Note that data represents placements and not necessarily number of youth.

The Q1 2017 report looks different than previous versions. Additional information has been included in an attempt to address recent inquiries. The presentation of the information is also slightly different. All information included in prior reports is still present in the current version.

### Total Out of Home Placements

---

Figure 1<sup>1</sup> shows the breakout of out of home placements. Overall, there were 228 out of home placements in quarter one of 2017. Sixty-seven percent were RTC Placements, thirteen percent were short-term placements and twenty percent were some other type of placement (see Figure 1).

Thirteen percent of RTC placements had a placement type of sexual offense treatment. The majority of short-term placements (77%) were at STAMP PLUS. Other placements consisted of foster home (31%), shelter (24%), transition (24%), group home (18%) and evaluation (3%) placement types.

---

<sup>1</sup> Numbers represent number of out of home placements not number of youth. Youth may have more than one placement within the reporting period.

**Figure 1. Total Out of Home Placements Q1 2017**

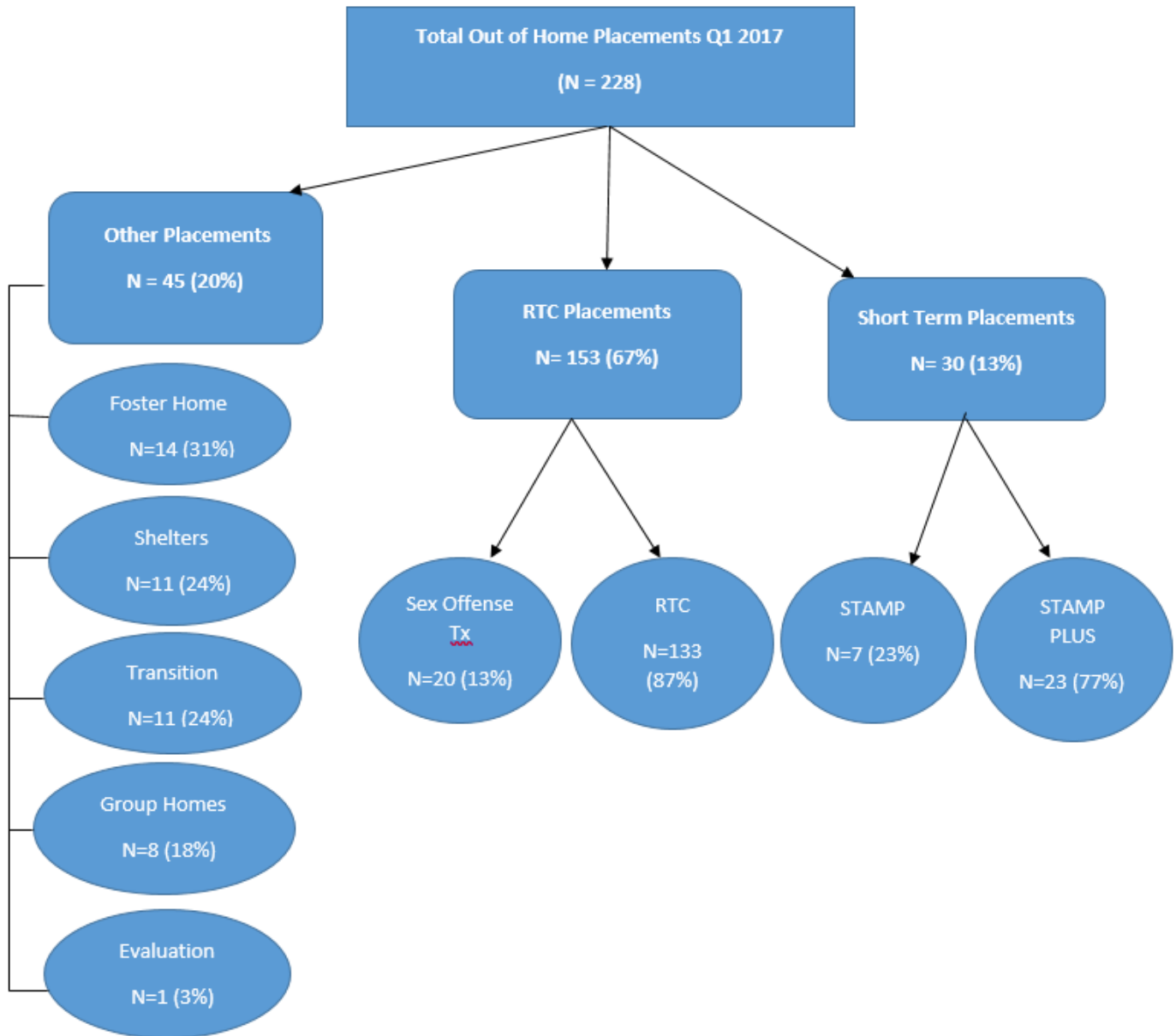
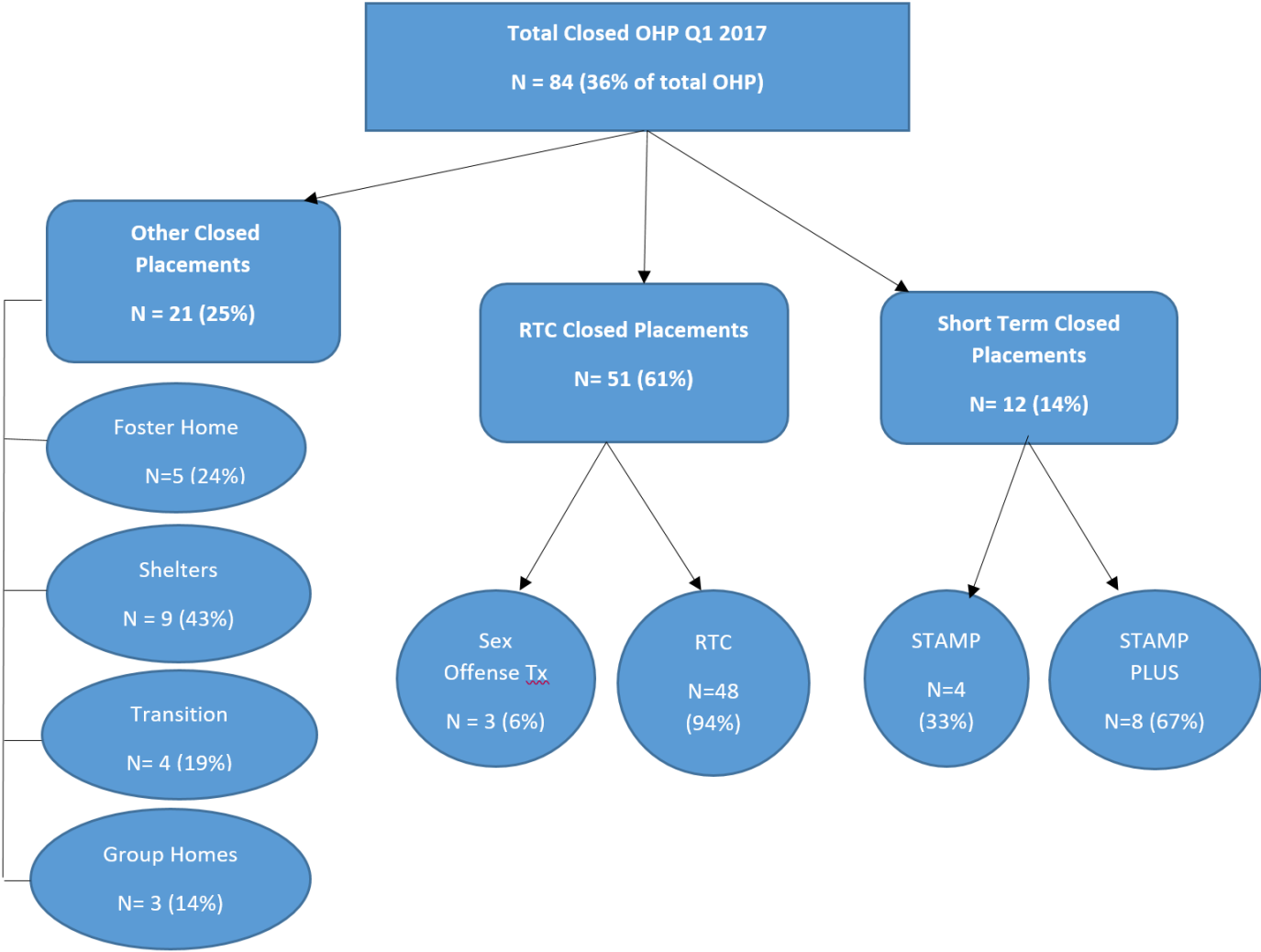


Figure 2 shows the breakout of closed out of home placements. Of the 228 total placements, 84 closed during quarter one of 2017.

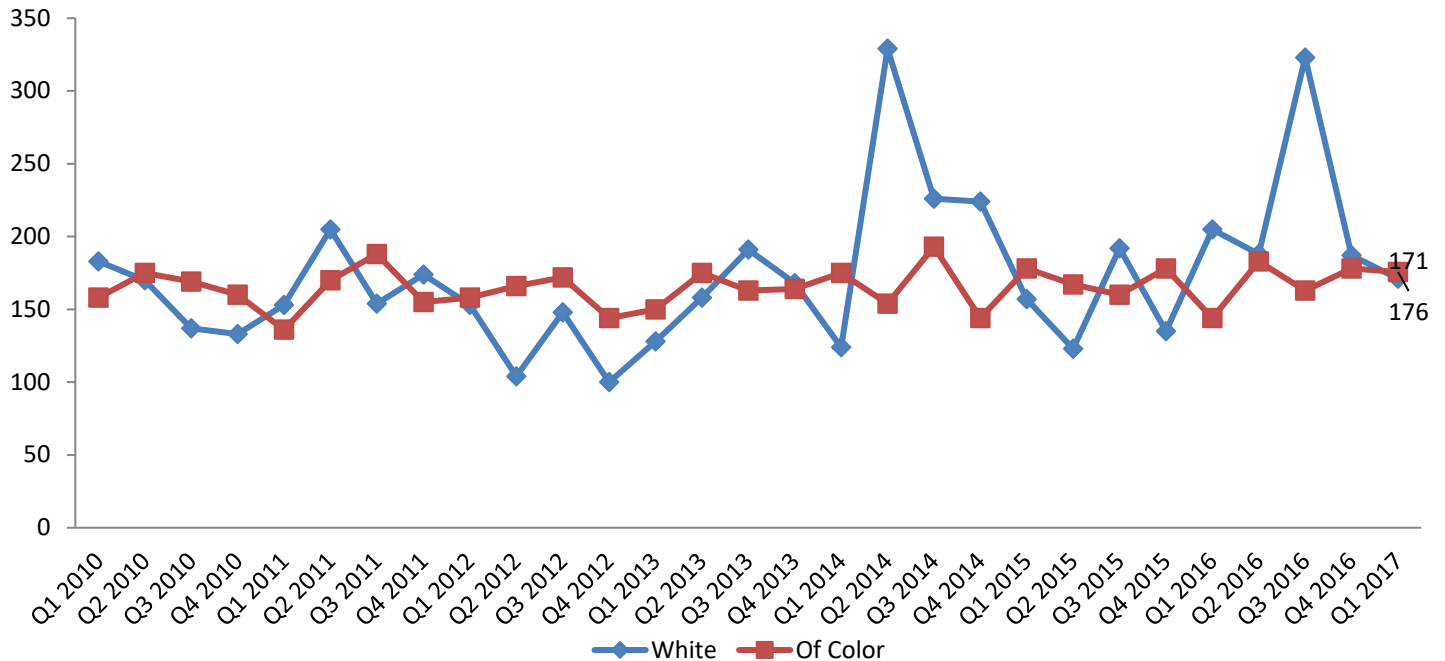
Sixty-one percent were RTC Placements, fourteen percent were short-term placements and twenty-five percent were some other type of placement (see Figure 2).

Six percent of RTC placements had a placement type of sexual offense treatment. The majority of short-term placements (67%) were at STAMP PLUS. Other placements consisted primarily of foster home (24%), shelters (43%), transition (19%) and group homes (14%).

Figure 2. Closed Out of Home Placements Q1 2017



## Average length of stay for closed placements by race

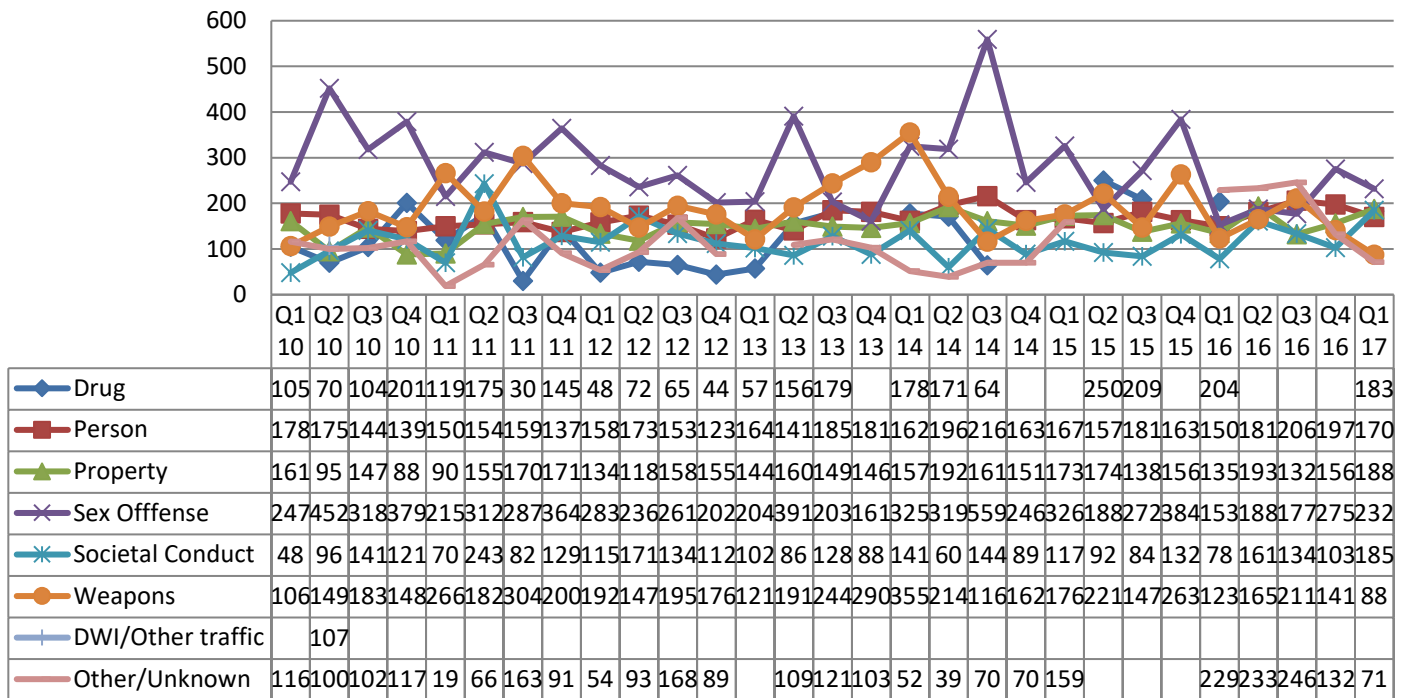


### Average length of stay for closed placements by race\* (detail)

	Q1 13	Q2 13	Q3 13	Q4 13	Q1 14	Q2 14	Q3 14	Q4 14	Q1 15	Q2 15	Q3 15	Q4 15	Q1 16	Q2 16	Q3 16	Q4 16	Q1 17
Amer Indian/ AK Native	115	114	163	142	164	124	172	70	149	149	140	208	120	133	177	283	288
Asian			205			200		147		388			239	893		205	216
Black/ African American	160	187	156	181	174	174	190	152	185	161	152	156	144	174	147	173	174
N. Hawaii/ Pacif Islander																	
Other Race	82	135	233	17	171	179	200	151	141	166	115	175	186	222	161	139	159
Two or more Races	180	69	219	54	186	143	205	141	181	165	237	327	165	200	228	193	97
White	128	158	191	168	124	329	226	224	157	123	192	135	205	188	323	187	171
Refused/ Unknown	24	162		125			190	114		182			2		372		
<b>Total Closed</b>	<b>107</b>	<b>122</b>	<b>104</b>	<b>96</b>	<b>99</b>	<b>89</b>	<b>96</b>	<b>105</b>	<b>96</b>	<b>164</b>	<b>162</b>	<b>175</b>	<b>148</b>	<b>183</b>	<b>173</b>	<b>178</b>	<b>175</b>

\*Length of stay for closed placements reports the average number of days in placement during quarter 1 2017.

## Average Length of stay for closed placements by offense type



### Average length of stay for closed placements by race and offense type

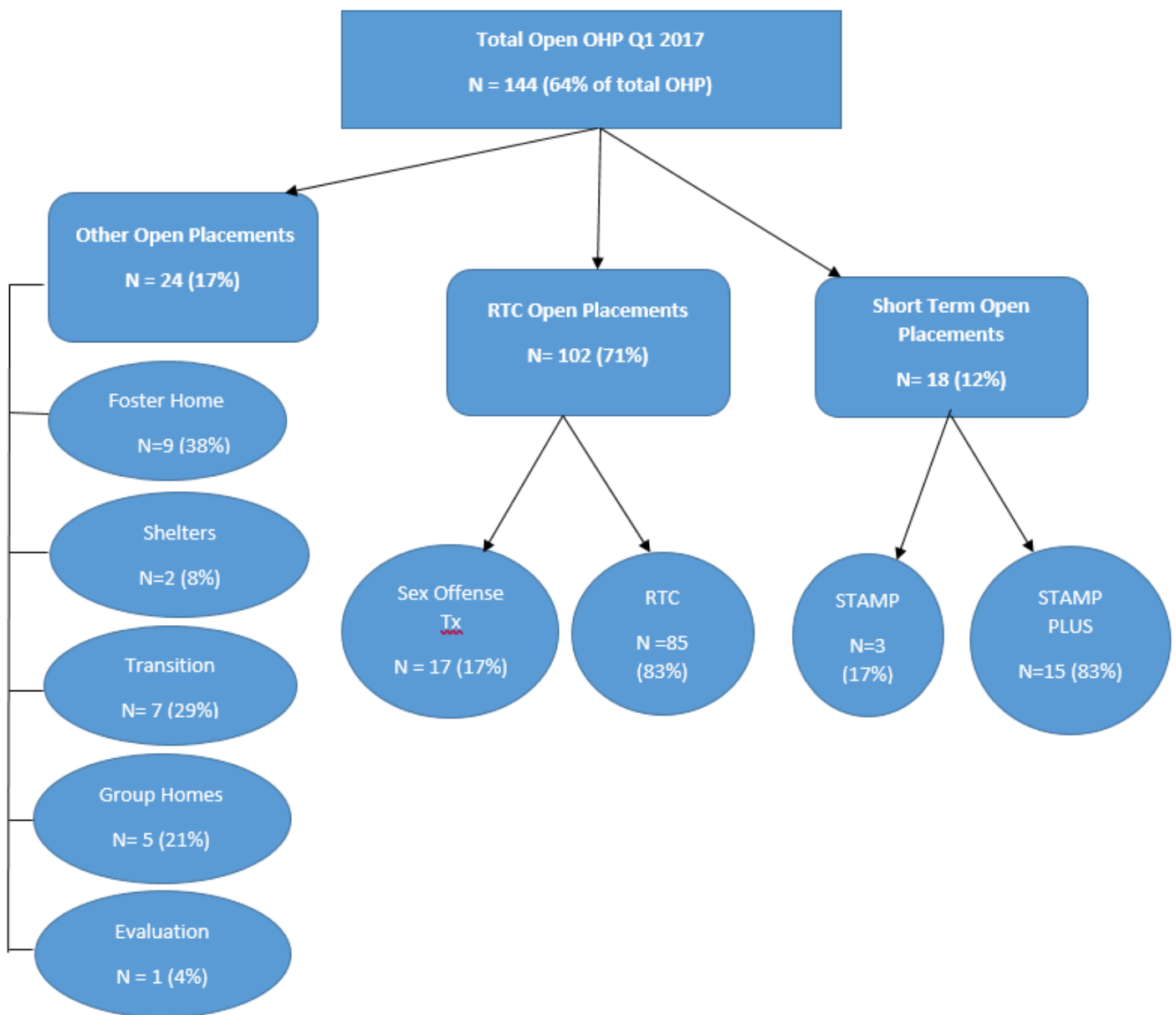
	Drug	Person	Property	Sex Offense	Societal Conduct	Weapons	Other/ Unk
Amer Indian/ AK Native		152 (n=1)	309 (n=4)	342 (n=1)			
Asian		216 (n=1)					
Black/ African American	130 (n=1)	184 (n=24)	168 (n=16)	217 (n=6)	185 (n=6)	119 (n=1)	60 (n=3)
Other Race	240 (n=2)	151 (n=3)	226 (n=2)	114 (n=1)		81 (n=1)	7 (n=1)
Two or more Races		5 (n=2)	65 (n=2)	381 (n=1)		63 (n=1)	
White	122(n=1)	213 (n=1)		143 (n=2)			170 (n=1)
<b>Total Closed</b>	<b>183 (n=4)</b>	<b>170 (n=32)</b>	<b>188 (n=24)</b>	<b>232 (n=10)</b>	<b>185 (n=6)</b>	<b>88 (n=3)</b>	<b>71 (n=5)</b>

For more information on Length of Stay (LOS) for closed placements, please see the Appendix.

Figure 3 shows the breakout of open out of home placements. Of the 228 total placements, 144 were open at the end of quarter one 2017 (March 31, 2017). Seventy-one percent were RTC Placements, twelve percent were short-term placements and seventeen percent were some other type of placement (see Figure 3).

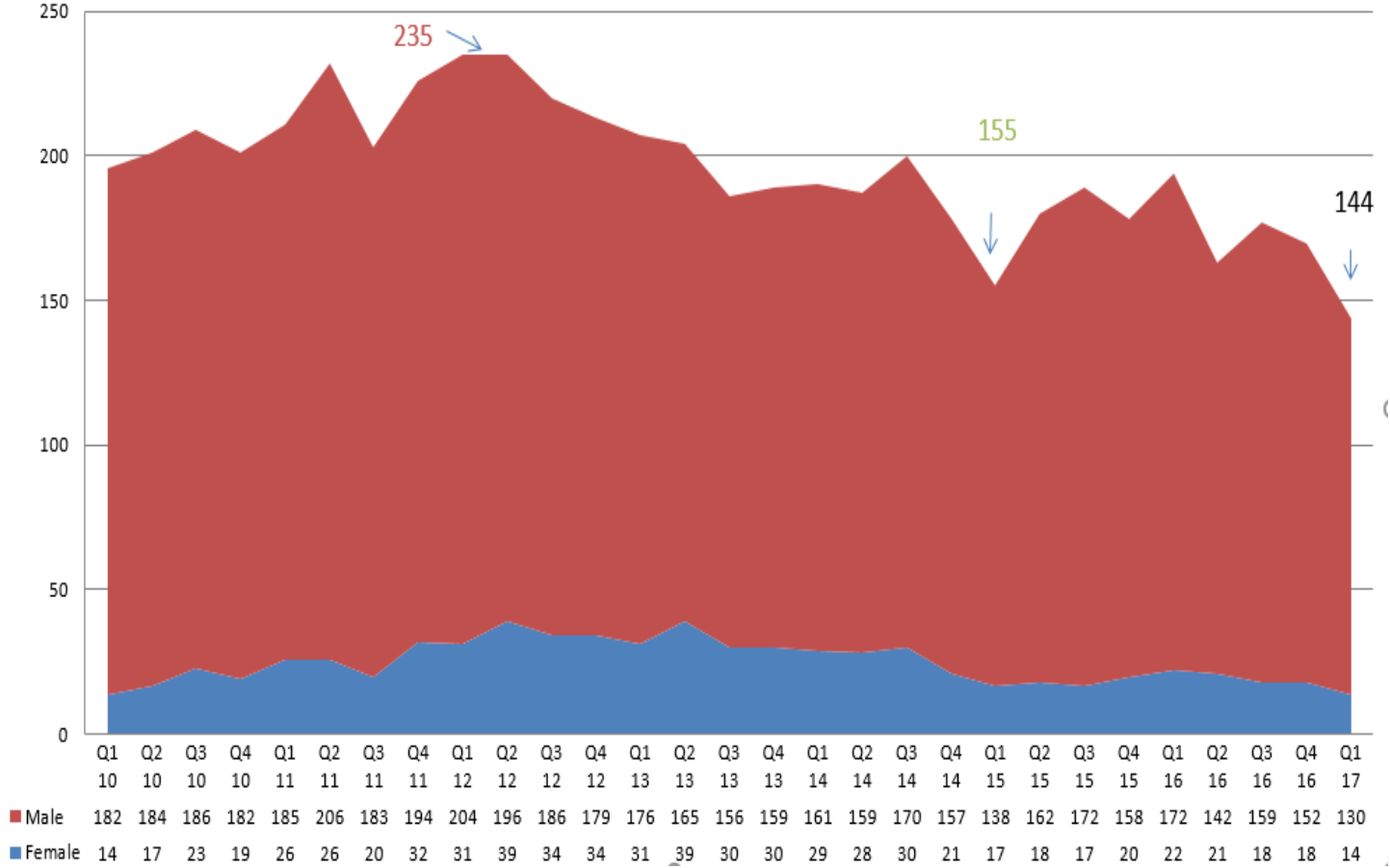
Seventeen percent of RTC placements had a placement type of sexual offense treatment. The majority of short-term placements (83%) were at STAMP PLUS. Other placements consisted primarily of foster home (38%), transition (29%), group homes (21%), shelters (8%) and evaluation (4%).

**Figure 3. Open Out of Home Placements Q1 2017**



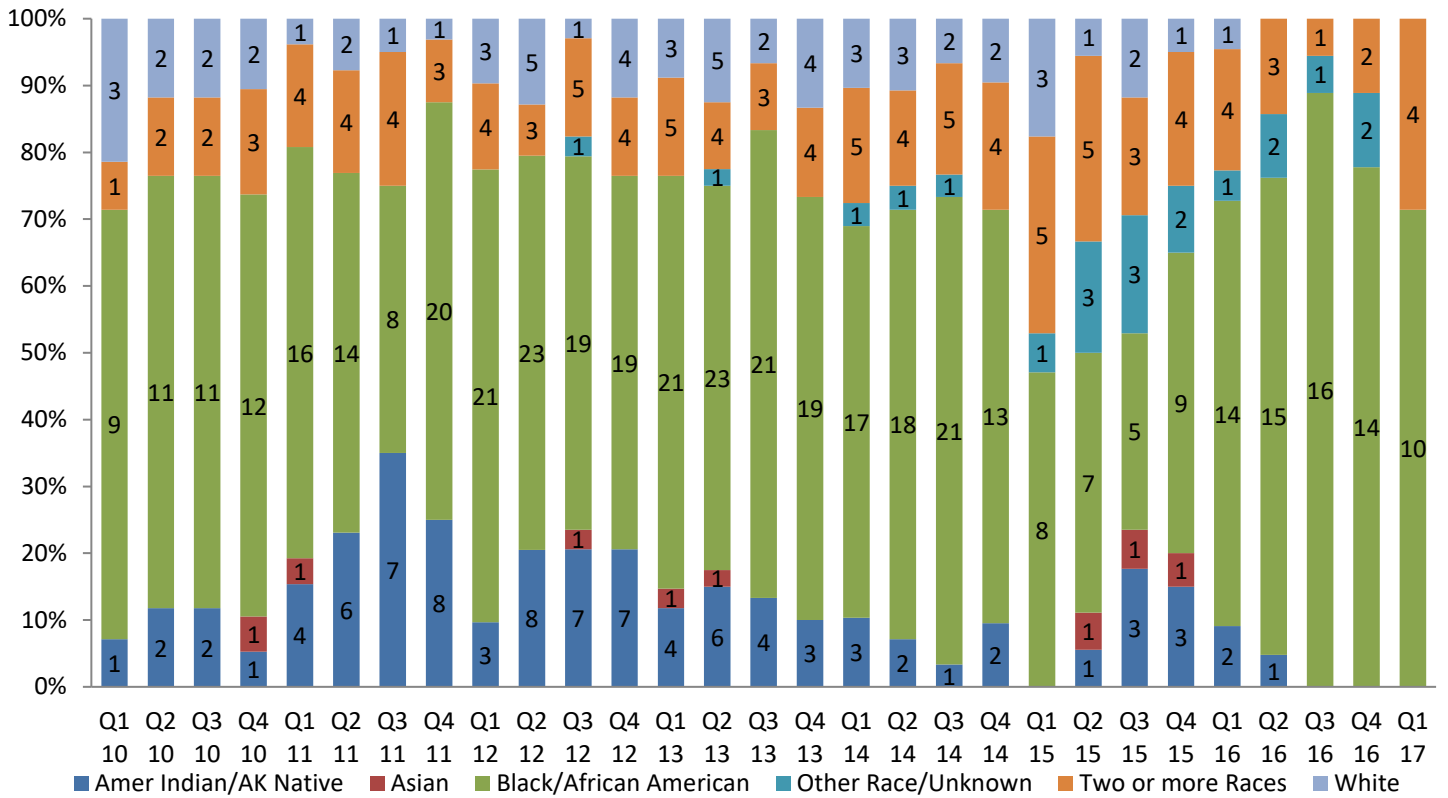
The chart below shows the number of male and female youth in out of home placement on the last day of the quarter (March 31, 2017).

**Youth in out-of-home placement at quarter end by sex**

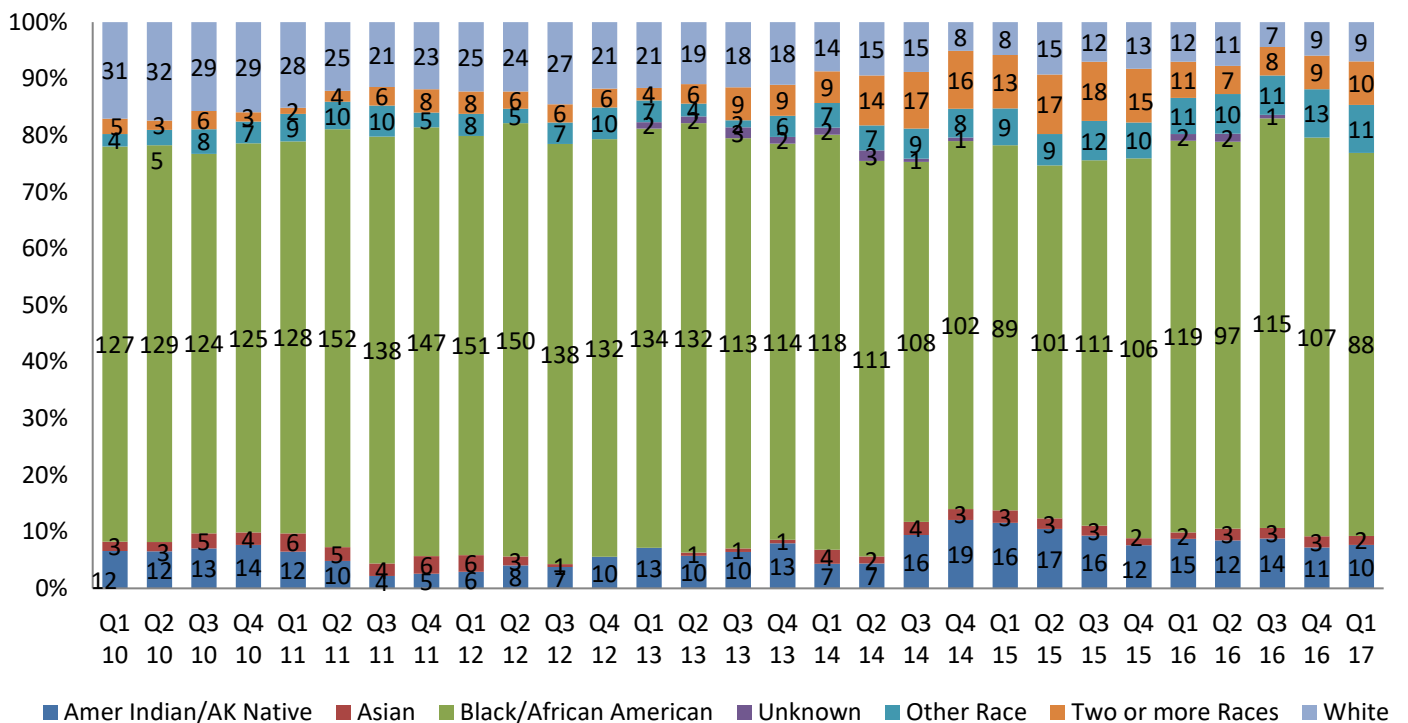


The following two charts show the race of male and female placements on the last day of the quarter (March 31, 2017) by quarter and year.

### Number and percent of girls in placement by race

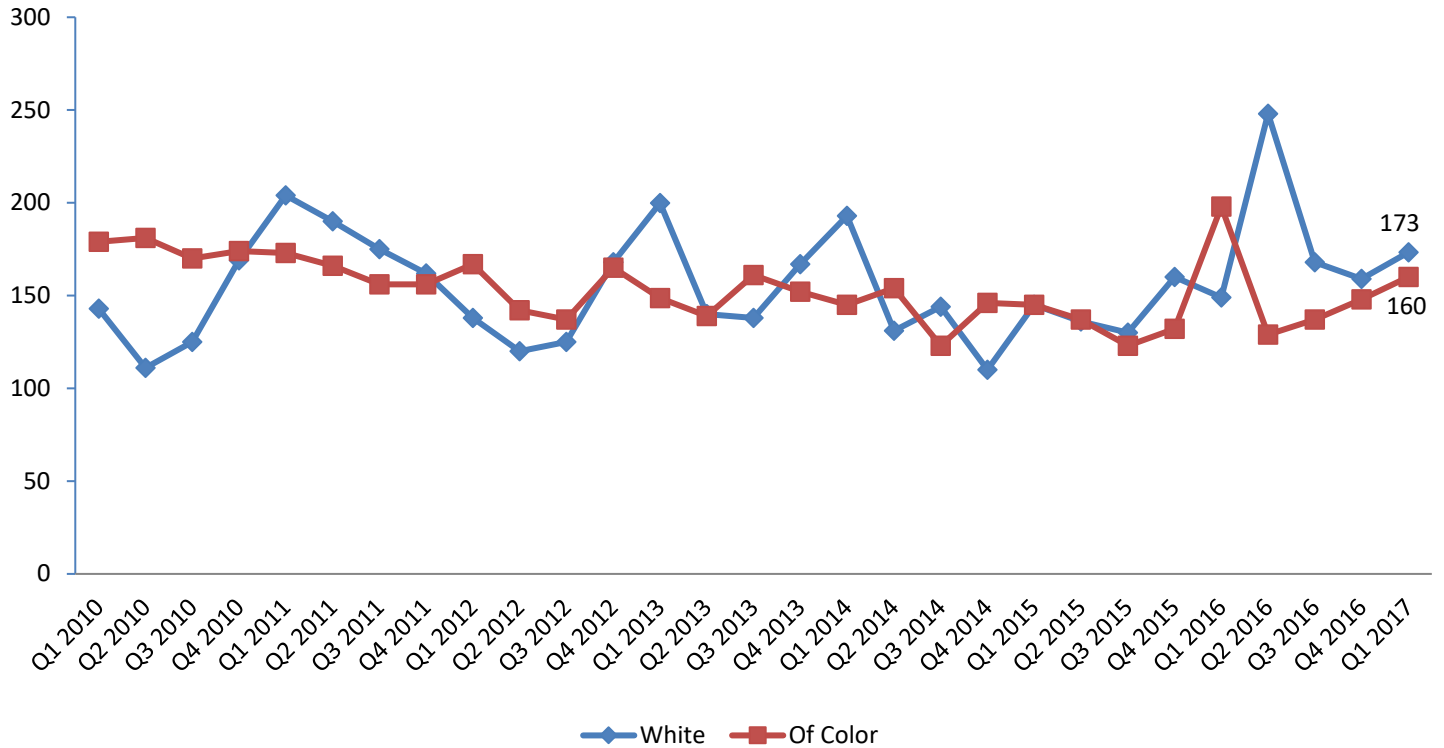


### Number and percent of boys in placement by race





## Current length of stay for open placements by race

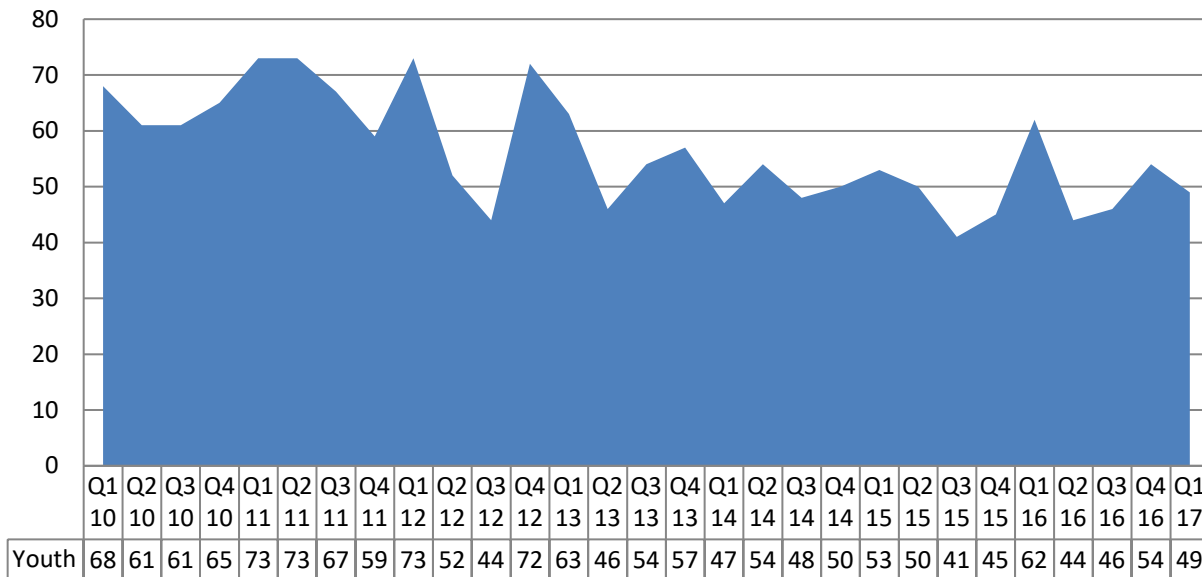


### Current length of stay for open placements by race\* (detail)

	Q1 13	Q2 13	Q3 13	Q4 13	Q1 14	Q2 14	Q3 14	Q4 14	Q1 15	Q2 15	Q3 15	Q4 15	Q1 16	Q2 16	Q3 16	Q4 16	Q1 17
Amer Indian/ AK Native	109	137	145	118	86	123	84	130	170	161	142	145	169	179	205	266	167
Asian	39	100	161	253	115	137	209	303	393	186	278	406	596	141	233	268	400
Black/African American	152	134	164	154	144	147	114	143	131	132	116	117	131	114	122	133	148
N. Hawaii/ Pacif Islander										116	208						
Other Race	134	179	26	53	97	167	113	180	129	77	102	115	188	113	152	139	171
Two or more Races	220	227	178	219	222	205	113	152	166	161	181	167	197	216	187	183	194
White	200	140	138	167	193	131	144	110	144	135	123	160	198	248	168	159	173
Refused/ Unknown	51	63	106	85	175	200	82	29	119	102	194	286	168	259	238		

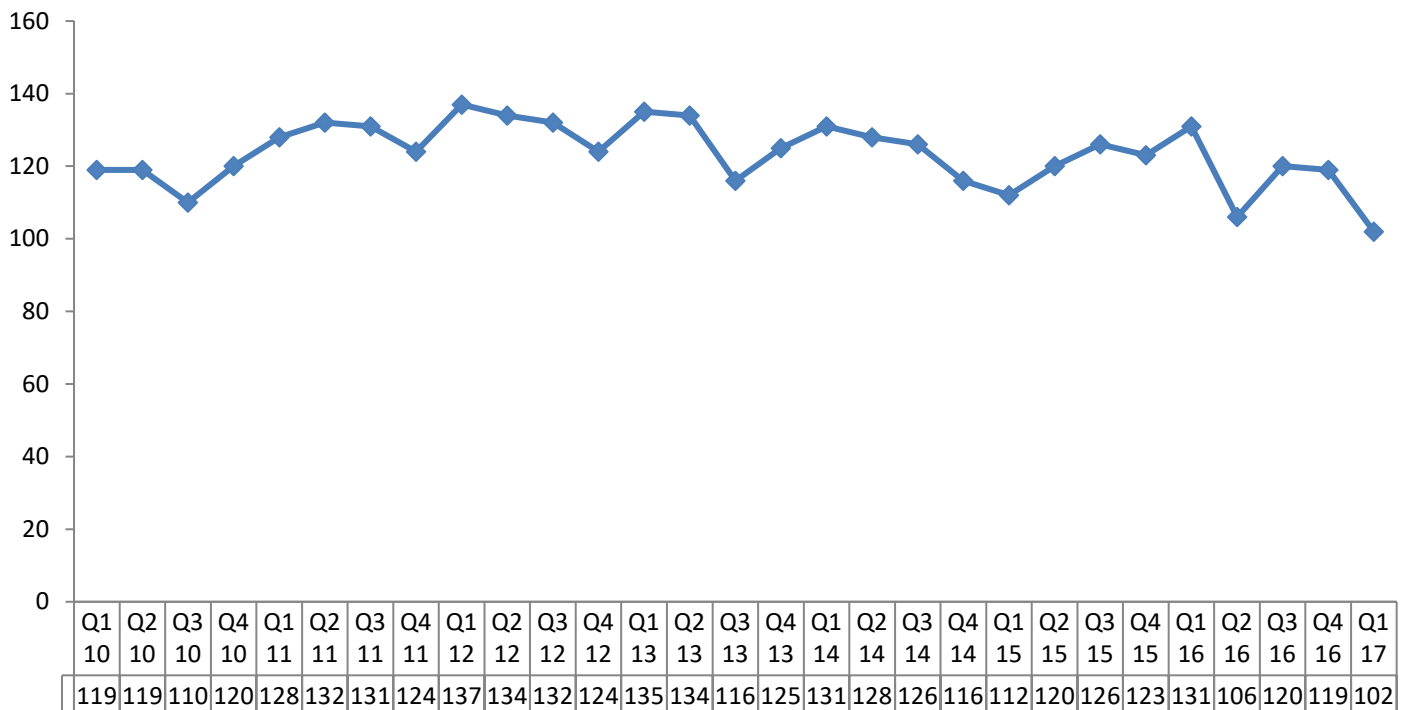
\*Current length of stay for open placements reports the average number of days in placement as of the end of the quarter for youth still in residence at the programs.

## Youth in open placements at quarter end for more than 180 days



## RTC Placement Trends

### Youth in RTC placements at quarter end Q1 2010 - Q1 2017

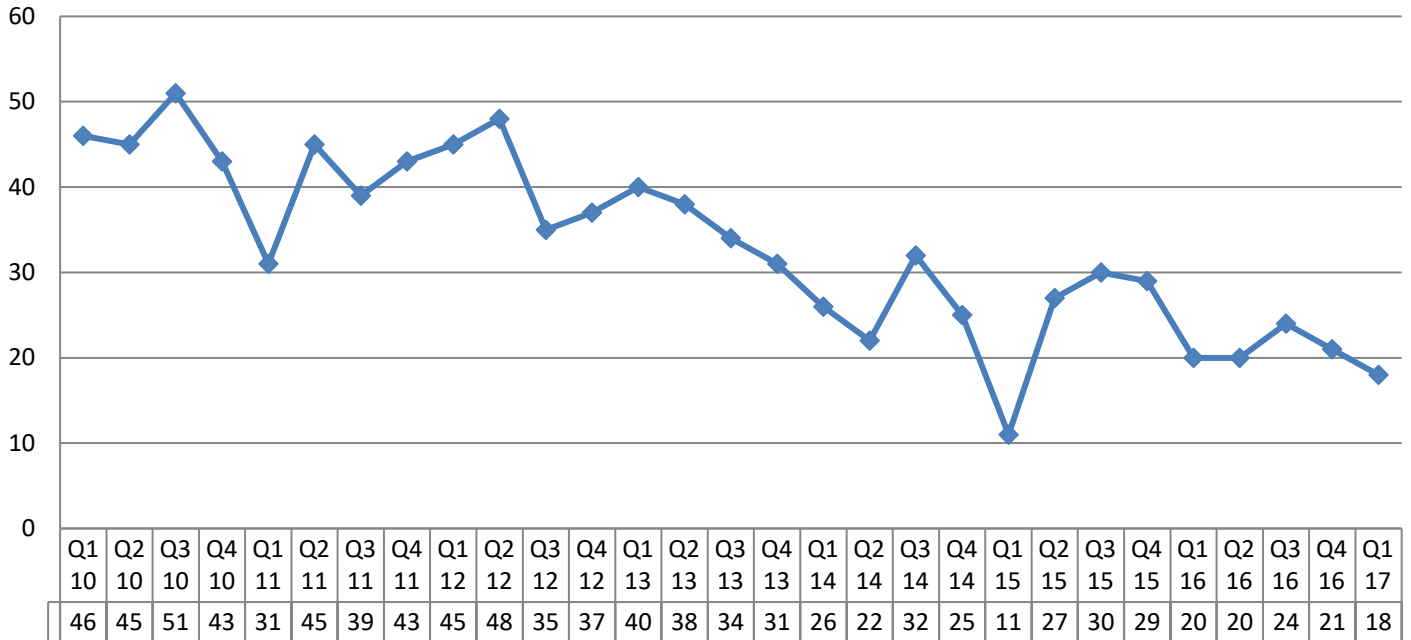


## Number of youth in RTC placement on the last day of each month by location April 2016 through March 2017

Listed by number of youth in placement in descending order

Placement Location	Apr 16	May 16	Jun 16	Jul 16	Aug16	Sep 16	Oct 16	Nov 16	Dec 16	Jan 17	Feb 17	Mar 17
MNDOC Red Wing RTC	38	36	38	37	38	41	42	41	39	37	36	32
Woodland Hills RTC	37	33	31	32	32	35	32	36	37	35	34	31
Bar None ITC - Evergreen	11	9	6	8	9	12	8	10	10	8	9	9
CHS AFSHS - L	8	6	6	8	9	11	10	9	7	6	8	9
Benchmark	2	2	2	2	2	4	4	4	4	4	4	4
CHS Focus RTC	8	7	8	9	10	7	7	8	8	6	4	4
MLA RTC	2	3	4	5	6	4	4	2	5	5	5	4
Woodward Academy								1	1	2	2	2
Alpha Human Services											1	1
Bar None RTC-Stepping	1	1	2	2	2	1	2	2	2	2	2	1
Clarinda Academy											1	1
Gerard Academy	1	1	1	1	1	1	1	1			1	1
Mingus Mountain											1	1
MLA New Trails GH	2	2	2	2	1	1	1	1	1	1	1	1
Woodland Hills - MH	1	1	1	1	1	1	1	2	2	1	1	1
CHS AFSHS - S	3	1	1						1	1	1	
MNDOC Dakota County				1	1	1	3	3	2	1	1	
Eau Claire RTC	3	3	3	1	1							
Homme Wittenberg												
Mesabi RTC - Compass	3											
Mesabi RTC-Open	12											
Mesabi Sex Offender	1											
Milwaukee Academy			1	1								
St. Joseph's RTC		1										
<b>Total</b>	<b>133</b>	<b>106</b>	<b>106</b>	<b>111</b>	<b>113</b>	<b>120</b>	<b>115</b>	<b>120</b>	<b>119</b>	<b>109</b>	<b>112</b>	<b>102</b>

## Youth in Short Term placements at quarter end, Q1 2010 - Q1 2017



## Number of youth in Short-Term placements on the last day of each month by location April 2016 through March 2017

Listed by number of youth in placement in descending order

Placement Location	Apr 16	May 16	Jun 16	Jul 16	Aug 16	Sep 16	Oct 16	Nov 16	Dec 16	Jan 17	Feb 17	Mar 17
CHS STAMP Plus	15	15	15	17	19	20	21	21	17	14	14	15
CHS STAMP	3	3	4	3	1	2	1	2	4	5	6	3
CHS Focus Short Term	1	1										
Dakota Gender Specific			1	1	2	2	2	2				
<b>Total</b>	<b>19</b>	<b>19</b>	<b>20</b>	<b>21</b>	<b>22</b>	<b>24</b>	<b>24</b>	<b>25</b>	<b>21</b>	<b>19</b>	<b>20</b>	<b>18</b>

+

Jessica Wildermuth, Senior Planning Analyst, Policy, Planning and Evaluation  
 Danette Buskovich, Manager, Policy, Planning and Evaluation

## Appendix

### Average LOS by Ethnicity for Other Closed Placements

		<i>Overall</i>	<i>Amer Indian/AK Native</i>	<i>Asian</i>	<i>Black/African American</i>	<i>Other Race</i>	<i>Two or more Races</i>	<i>White</i>
<b>Other Placement Total (N=21)</b>	<b># of Placements</b>	21	2	0	13	3	2	1
	<b>Mean</b>	104.71	310.50		92.92	49.33	4.50	213.00
	<b>Median</b>	53.00	310.50		53.00	60.00	4.50	213.00
	<b>Range</b>	2-602	19-602		6-336	7-81	2-7	213-213
<b>Shelter (N=9)</b>	<b># of Placements</b>	9	0	0	5	2	2	0
	<b>Mean</b>	22.11			24.60	33.50	4.50	
	<b>Median</b>	8.00			14.00	33.50	4.50	
	<b>Range</b>	2-60			7-53	7-60	2-7	
<b>Transition (N=4)</b>	<b># of Placements</b>	4	0	0	2	1	0	1
	<b>Mean</b>	106.50			66.00	81.00		213.00
	<b>Median</b>	96.50			66.00	81.00		213.00
	<b>Range</b>	20-213			20-112	81-81		213-213
<b>Foster (N=5)</b>	<b># of Placements</b>	5	2	0	3	0	0	0
	<b>Mean</b>	256.20	310.50		220.00			
	<b>Median</b>	214.00	310.50		214.00			
	<b>Range</b>	19-602	19-602		110-336			
<b>Group Homes (N=3)</b>	<b># of Placements</b>	3	0	0	3	0	0	0
	<b>Mean</b>	97.67			97.67			
	<b>Median</b>	130.00			130.00			
	<b>Range</b>	6-157			6-157			

## Average LOS by Ethnicity for RTC Closed Placements

	<i>Overall</i>	<i>Amer Indian/ AK Native</i>	<i>Asian</i>	<i>Black/ African American</i>	<i>Other Race</i>	<i>Two or more Races</i>	<i>White</i>
<b>RTC Total (N=51)</b>							
# of Placements	51	3	1	36	6	4	1
Mean	212.20	312.33	216.00	211.25	218.50	143.50	179.00
Median	215.00	342.00	216.00	214.50	240.00	92.00	179.00
Range	9-443	152-443	216- 216	35-360	114-282	9-381	179-179
<b>RTC (N= 48)</b>							
# of Placements	48	2	1	36	5	4	0
Mean	212.23	297.50	216.00	211.25	239.50	143.50	
Median	215.50	297.50	216.00	214.50	260.00	92.00	
Range	9-443	152-443	216- 216	35-360	169-282	9-381	
<b>Sex Offense Tx (N=3)</b>							
# of Placements	3	1	0	0	1	0	1
Mean	211.67	342.00			114.00		179.00
Median	179.00	342.00			114.00		179.00
Range	114-342	342-342			114-114		179-179

## Average LOS by Ethnicity for Red Wing and Woodland Hills RTC Closed Placements

	<i>Overall</i>	<i>Amer Indian/AK Native</i>	<i>Asian</i>	<i>Black/ African American</i>	<i>Other Race</i>	<i>Two or more Races</i>	<i>White</i>
<b>Red Wing</b>							
# of Placements	16	1	0	12	2	1	0
Mean	259.38	443.00		231.50	274.00	381.00	
Median	272.50	443.00		271.00	274.00	381.00	
Range	63-443	443-443		63-350	266- 282	381-381	
<b>Woodland Hills</b>							
# of Placements	18	1	1	12	1	3	0
Mean	201.22	152.00	216.00	236.75	220.00	64.33	
Median	218.00	152.00	216.00	234.00	220.00	63.00	
Range	9-360	152-152	216-216	76-360	220- 220	9-121	

## Average LOS by Ethnicity for Short-Term Closed Placements

	<i>Overall</i>	<i>Amer Indian/AK Native</i>	<i>Asian</i>	<i>Black/African American</i>	<i>Other Race</i>	<i>Two or more Races</i>	<i>White</i>	
<b>Short Term Total (N=12)</b>	<b># of Placements</b>	12	1	0	8	1	0	2
	<b>Mean</b>	143.00	171.00		140.88	126.00		146.00
	<b>Median</b>	148.00	171.00		148.00	126.00		146.00
	<b>Range</b>	56-179	171-171		56-179	126-126		122-170
<b>STAMP (N=4)</b>	<b># of Placements</b>	4	0	0	4	0	0	0
	<b>Mean</b>	103.25			103.25			
	<b>Median</b>	119.00			119.00			
	<b>Range</b>	56-119			56-119			
<b>STAMP PLUS (N=8)</b>	<b># of Placements</b>	8	1	0	4	1	0	2
	<b>Mean</b>	162.88	171.00		178.50	126.00		146.00
	<b>Median</b>	174.00	171.00		179.00	126.00		146.00
	<b>Range</b>	122-179	171-171		177-179	126-126		122-170