

Child protection screening of sexual exploitation and sex trafficking

A screener or screening team can use this tool when they believe a reporter may be sharing information related to sex trafficking or sexual exploitation. In combination with supervisory discretion, this tool can help determine if a report meets criteria and which response path should be selected. Screen in all sex trafficking reports for child protection investigation regardless of child's relationship to the alleged offender [[Minn. Stat. 626.556 subd. 2\(n\)](#)]. Screen out sexual exploitation reports involving non-caregiver alleged offenders and refer them for a child welfare response.

Terms used in this tool:

Exchange for anything of value: Trading money, drugs, shelter, food, protection, etc.

Facilitate: Receiving or obtaining (getting from someone), recruiting (inviting, asking), grooming (befriending, talking into, persuading), harboring (keeping in a place), providing (bringing)

MAARC: Minnesota Adult Abuse Reporting Center (1-844-880-1574)

Profit: Receiving money or anything of value, which may include drugs, alcohol, food, shelter, transportation

Pornography: Depiction of actual or simulated sexual conduct [[Minn. Stat. 617.246 subd. 1\(f\)](#)]

Regional Navigator: Regional point of contact for sexual exploitation and sex trafficking, including connecting exploited, trafficked or at-risk youth with appropriate services, outreach or education

Sexual assault: Non-consensual sexual contact or certain sexual conduct between an adult and a child [[Minn. Stat. 609.342-609.3451](#)]

Sexual contact or penetration: Intentional touching of one's intimate parts, or any intrusion into body openings [[Minn. Stat. 609.341, subd. 11 and 12](#)]

Sex trafficking: Defined in Minnesota as the act of a third party, not the purchaser or the victim, facilitating or profiting from a commercial sex act performed by another person [[Minn. Stat. 609.321 -609.322](#)]

Sexual exploitation: Includes all commercial sex acts and non-commercial sexual abuse [[Minn. Stat. 260C.007 subd. 31](#)]

Sexual performance: Any play, dance or other exhibition presented before an audience or for purposes of visual or mechanical reproduction that uses a minor to depict actual or simulated sexual conduct [[Minn. Stat. 617.246, subd. 1\(d\)](#)]

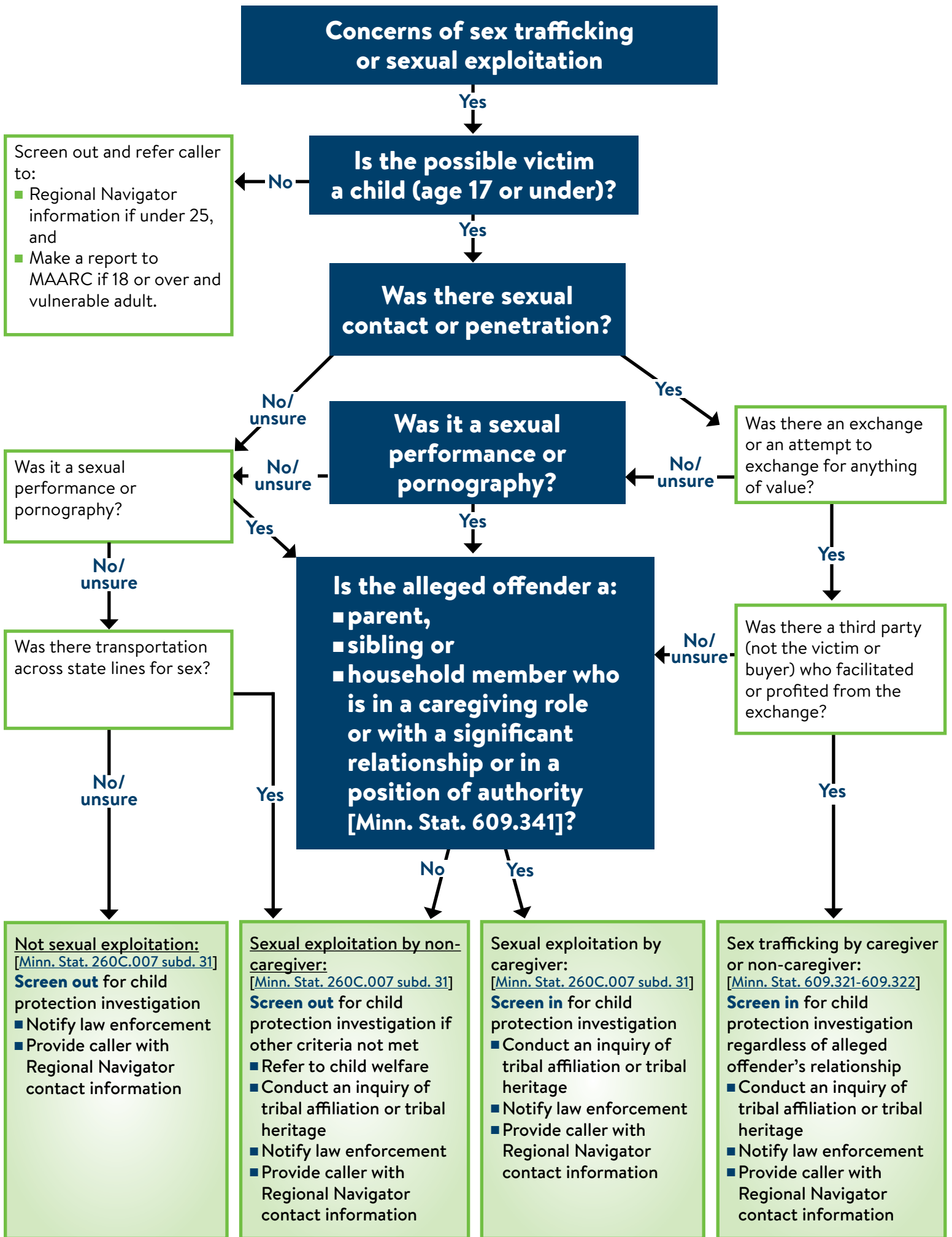
Indicators of sexual exploitation or trafficking

Each situation is unique and indicators alone should not be used to make a screening determination.

- Missing from home for extended time and unaccounted for; running away multiple times; kicked out of home
- Signs of a controlling relationship or intimate partner violence
- Access to money/large amounts of cash, clothes or other expensive belongings youth could not afford on their own
- Use of social media and apps commonly associated with sex trading
- Multiple hotel cards; staying in hotels known for trafficking; pictures taken in hotel rooms
- Branding tattoos or markings; may be name of trafficker or other ways of being marked by a trafficker
- Association with others known to be involved in trafficking, exploitation or sex trading
- Family members involved in sex or labor trafficking, prostitution or promotion of prostitution
- Involvement in law enforcement stings or investigations related to prostitution, solicitation or sex trafficking



For accessible formats of this information or assistance with additional equal access to human services, write to dhs.info@state.mn.us, call 651-431-4670, or use your preferred relay service. ADA1 (2-18)



Concerns of sex trafficking or sexual exploitation

Yes

Is the possible victim a child (age 17 or under)?

Screen out and refer caller to:
 ■ Regional Navigator information if under 25, and
 ■ Make a report to MAARC if 18 or over and vulnerable adult.

Yes

Was there sexual contact or penetration?

Was it a sexual performance or pornography?

No/unsure

Yes

Was it a sexual performance or pornography?

No/unsure

Was there an exchange or an attempt to exchange for anything of value?

Yes

Yes

**Is the alleged offender a:
 ■ parent,
 ■ sibling or
 ■ household member who is in a caregiving role or with a significant relationship or in a position of authority [Minn. Stat. 609.341]?**

No/unsure

Was there a third party (not the victim or buyer) who facilitated or profited from the exchange?

Was there transportation across state lines for sex?

No/unsure

No/unsure

Not sexual exploitation:
 [Minn. Stat. 260C.007 subd. 31]
Screen out for child protection investigation
 ■ Notify law enforcement
 ■ Provide caller with Regional Navigator contact information

Sexual exploitation by non-caregiver:
 [Minn. Stat. 260C.007 subd. 31]
Screen out for child protection investigation if other criteria not met
 ■ Refer to child welfare
 ■ Conduct an inquiry of tribal affiliation or tribal heritage
 ■ Notify law enforcement
 ■ Provide caller with Regional Navigator contact information

Sexual exploitation by caregiver:
 [Minn. Stat. 260C.007 subd. 31]
Screen in for child protection investigation
 ■ Conduct an inquiry of tribal affiliation or tribal heritage
 ■ Notify law enforcement
 ■ Provide caller with Regional Navigator contact information

Sex trafficking by caregiver or non-caregiver:
 [Minn. Stat. 609.321-609.322]
Screen in for child protection investigation regardless of alleged offender's relationship
 ■ Conduct an inquiry of tribal affiliation or tribal heritage
 ■ Notify law enforcement
 ■ Provide caller with Regional Navigator contact information

No

Yes

Yes

Yes

(This page includes all of the necessary information for accessibility purposes regarding the chart on previous page)