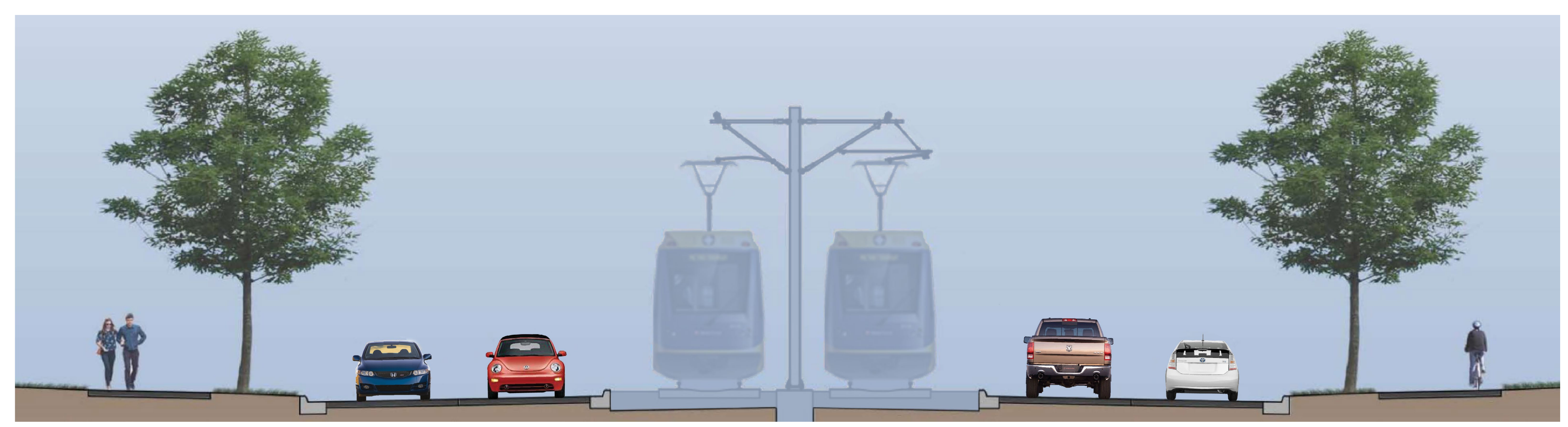


What is the new design for West Broadway from 93rd Avenue to Candlewood Drive?

What will the road look like?



1.8 miles
of roadway

ADD center median **future transit**
to accommodate

left turn lane

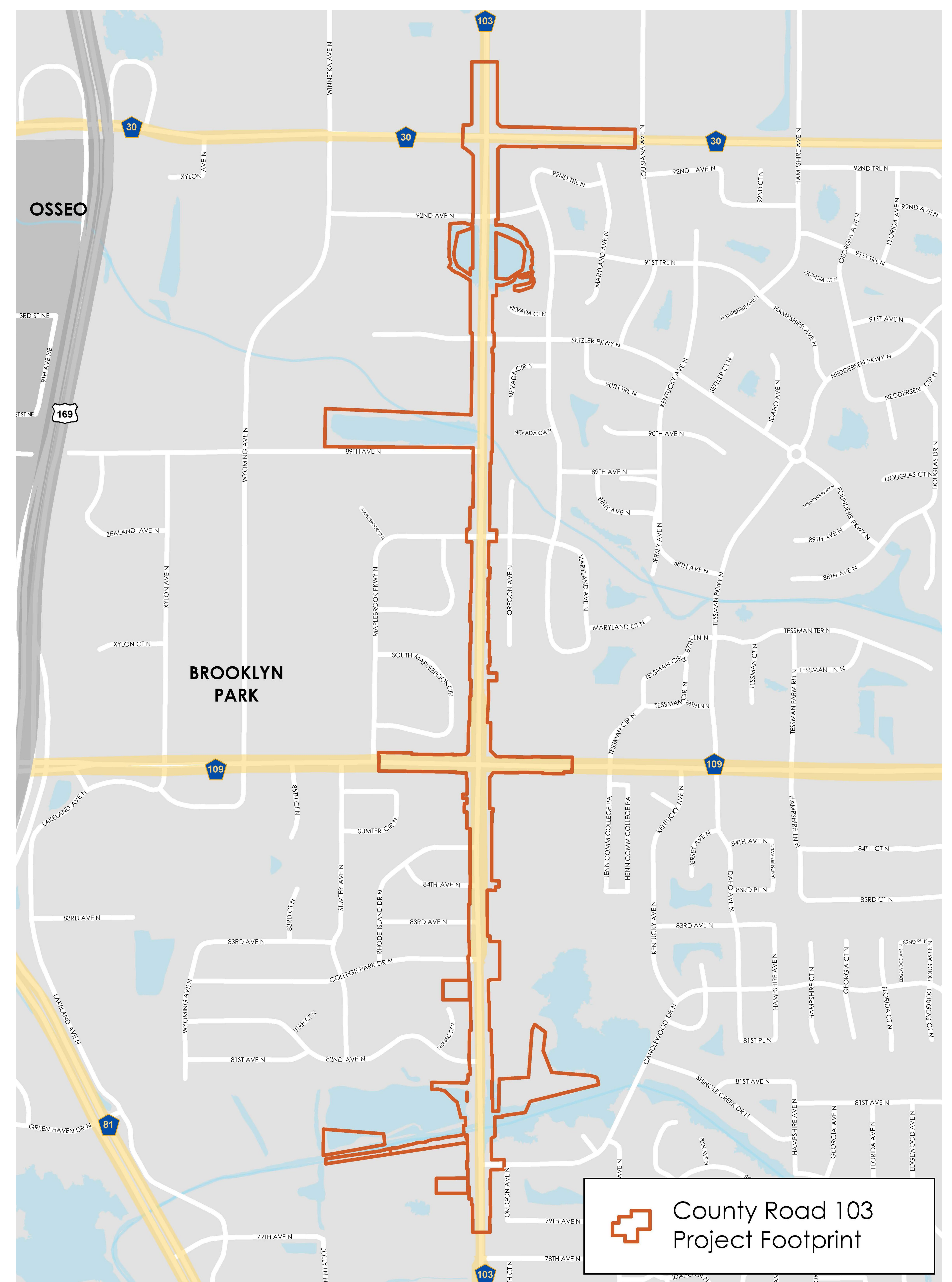
replace **Signals**

Increase **4** travel lanes
2 lanes
93rd Ave - 85th Ave

add 10-ft **Multi-use paths**



What is the project footprint?



County Road 103 Project Footprint

Why does West Broadway need a new design?

Whether or not light rail comes in the future, we need to rebuild the road to:



Fix the pavement, remove cracks and bumps, and make it a smoother travel experience



Improve safety along the route — some intersections experience higher than normal crashes



Keep traffic moving — delays experienced today are expected to get worse without improvements



Accommodate multiple modes of transportation, including people walking, riding bikes, and traveling in wheelchairs



Since the project is on the same timeline as the METRO Blue Line Extension, design and construction are being coordinated with the light rail project.

What is the project timeline?

We are here



Environmental Review

- Published September 2015
- Month-long comment period



Environmental Review Complete

- December 2015/ January 2016
- To be approved by Hennepin County



City Approval

- Beginning of 2016

Design

- 2016 – 2017
- Completed in coordination with the METRO Blue Line LRT Extension project

Construction

- Anticipated between 2018 and 2020
- Constructed with LRT

During Design, the project will need approvals from:

Shingle Creek/
West Mississippi
Watershed Management
Commission

Minnesota
Pollution Control
Agency

Minnesota
Department of
Natural Resources

US
Army Corps
of Engineers

What is included in the environmental review?

The new road design needs a type of environmental review called an Environmental Assessment Worksheet (EAW).

What it does

- Discloses information about the potential impacts of a project
- Determines whether a more detailed environmental review is needed
- Identifies changes that can reduce environmental impacts

What it includes

- Project description & location
- Purpose & need
- Land use and zoning
- Historic properties
- Parks and recreation areas
- Aesthetics & visual resources
- Right-of-Way impacts
- Transportation
- Water resources
- Soil and geology
- Threatened and endangered species
- Noise
- Contaminated properties
- Air quality
- Required permits/approvals
- Cumulative impacts

What are the noise impacts?

Noise impacts for road reconstruction are generated by automobile traffic.

These tables show the results of the noise analysis, including noise levels today, in the future without the road reconstruction, and in the future with the road reconstruction.

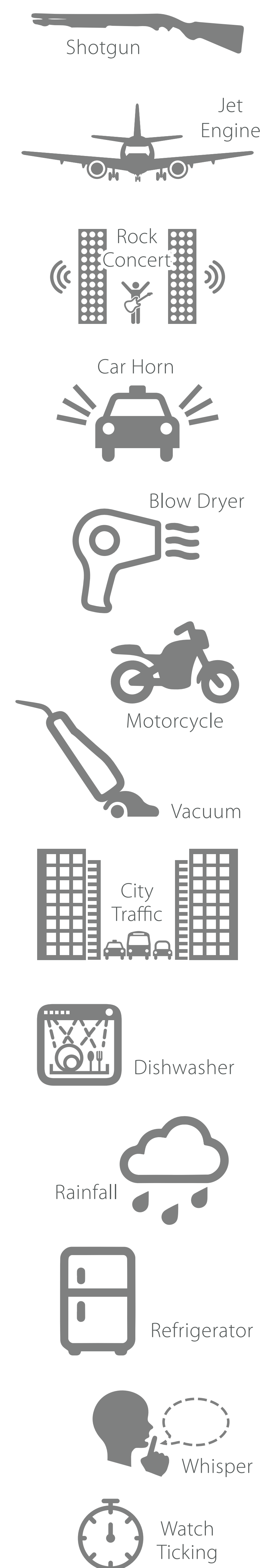
| Noise Analysis Results – Computed AM and PM Loudest-Hour Sound Levels (L10, dBA) | | | | | | | |
|---|--|---------------|----|---------------|----|------------|----|
| Receiver | Addresses Represented | 2014 Existing | | 2040 No-Build | | 2040 Build | |
| | | AM | PM | AM | PM | AM | PM |
| R-1 | 92nd Ave & W Broadway Ave | 65 | 66 | 67 | 67 | 64 | 65 |
| R-2 | 9189/9183/9177/9171/9143/9137/9131/9125 Nevada Ave N | 57 | 58 | 58 | 59 | 55 | 56 |
| R-3 | 9119/9117/9133 Nevada Ave N | 56 | 57 | 57 | 58 | 54 | 55 |
| R-4 | 9129/9125 Nevada Ct N | 59 | 60 | 60 | 61 | 57 | 58 |
| R-5 | 9121 Nevada Ct N | 67 | 69 | 69 | 70 | 64 | 66 |
| R-6 | 9117 Nevada Ct N | 60 | 62 | 62 | 63 | 58 | 60 |
| R-7 | 9113/9109 Nevada Ct N | 61 | 62 | 62 | 63 | 60 | 61 |
| R-8 | 9037/9043 Nevada Cir N | 58 | 60 | 60 | 61 | 57 | 58 |
| R-9 | 9031/9025/9019 Nevada Circle N | 61 | 62 | 62 | 63 | 59 | 61 |
| R-10 | 9018/9024/9010 Nevada Circle N | 58 | 59 | 59 | 60 | 56 | 57 |
| R-11 | 9030 Nevada Circle N | 54 | 56 | 56 | 57 | 53 | 54 |
| R-12 | 8924 W. Broadway Ave | 67 | 69 | 68 | 70 | 65 | 67 |
| R-13 | 8839/8836 Oregon Ave | 64 | 66 | 66 | 67 | 62 | 63 |
| R-14 | 8831/8825 Oregon Ave | 63 | 64 | 64 | 65 | 60 | 61 |
| R-15 | 8807/8813/8819 Oregon Ave | 64 | 65 | 65 | 67 | 61 | 63 |
| R-16 | 8801 Oregon Ave | 66 | 68 | 68 | 69 | 64 | 65 |
| R-17 | 8800 Oregon Ave | 58 | 60 | 60 | 61 | 58 | 60 |
| R-18 | 8806/8812/8818 Oregon Ave | 53 | 54 | 54 | 55 | 51 | 52 |
| R-19 | 8830/8824 Oregon Ave | 52 | 54 | 54 | 55 | 50 | 51 |
| R-20 | 8836 Oregon Ave | 57 | 58 | 58 | 59 | 54 | 55 |
| R-21 | 8749/8743 Oregon Ave | 69 | 70 | 70 | 71 | 66 | 68 |
| R-22 | 8737/8731/8725 Oregon Ave | 62 | 64 | 64 | 65 | 60 | 62 |
| R-23 | 8719/8713/8707 Oregon Ave | 63 | 64 | 64 | 65 | 61 | 63 |
| R-24 | 8701/8619/8613/8607 Oregon Ave | 63 | 64 | 64 | 65 | 61 | 63 |
| R-25 | 8601 Oregon Ave | 59 | 60 | 60 | 61 | 57 | 58 |
| R-26 | 8604 Oregon Ave | 55 | 56 | 56 | 57 | 53 | 55 |
| R-27 | 8610/8616 Oregon Ave | 53 | 54 | 53 | 55 | 51 | 53 |
| R-28 | 8622/8700/8706 Oregon Ave | 53 | 54 | 54 | 55 | 51 | 53 |
| R-29 | 8712/8718/8724/8730 Oregon Ave | 53 | 54 | 54 | 55 | 51 | 53 |
| R-30 | 8736/8742 Oregon Ave | 58 | 59 | 59 | 61 | 57 | 59 |
| R-31 | 7516/7520/7512 Maplebrook Pkwy N | 68 | 69 | 70 | 70 | 68 | 69 |
| R-32 | 7504/7500/7508 Maplebrook Pkwy N | 68 | 69 | 70 | 70 | 68 | 69 |
| R-33 | 7544/7540/7536 Maplebrook Pkwy N | 61 | 62 | 62 | 63 | 60 | 60 |
| R-34 | 7532/7528/7524 Maplebrook Pkwy N | 59 | 60 | 61 | 61 | 58 | 59 |
| R-35 | 8790/8794 N Maplebrook Cir | 62 | 63 | 64 | 64 | 63 | 64 |
| R-36 | 8788/8792 N Maplebrook Cir | 57 | 58 | 59 | 59 | 57 | 58 |
| R-37 | 8782/8786 N Maplebrook Cir | 61 | 62 | 63 | 63 | 62 | 63 |

| Noise Analysis Results – Computed AM and PM Loudest-Hour Sound Levels (L10, dBA) | | | | | | | |
|---|---|---------------|----|---------------|----|------------|----|
| Receiver | Addresses Represented | 2014 Existing | | 2040 No-Build | | 2040 Build | |
| | | AM | PM | AM | PM | AM | PM |
| R-38 | 8780/8784 N Maplebrook Cir | 56 | 57 | 57 | 58 | 56 | 57 |
| R-39 | 8774/8778 N Maplebrook Cir | 63 | 64 | 65 | 65 | 64 | 65 |
| R-40 | 8772/8776 N Maplebrook Cir | 57 | 58 | 58 | 59 | 57 | 58 |
| R-41 | 8770/8766 N Maplebrook Cir | 68 | 69 | 70 | 70 | 68 | 68 |
| R-42 | 8764/8768 N Maplebrook Cir | 59 | 60 | 60 | 61 | 58 | 59 |
| R-43 | 8758/8762 N Maplebrook Cir | 68 | 69 | 70 | 70 | 68 | 68 |
| R-44 | 8756/8760 N Maplebrook Cir | 59 | 60 | 60 | 61 | 58 | 59 |
| R-45 | 8750/8754 N Maplebrook Cir | 66 | 67 | 68 | 68 | 65 | 66 |
| R-46 | 8748/8752 N Maplebrook Cir | 58 | 59 | 59 | 60 | 57 | 58 |
| R-47 | 8742/8746 N Maplebrook Cir | 60 | 61 | 61 | 62 | 59 | 59 |
| R-48 | 8740/8744 N Maplebrook Cir | 56 | 57 | 57 | 58 | 55 | 56 |
| R-49 | 8734/8738 N Maplebrook Cir | 56 | 57 | 57 | 58 | 55 | 56 |
| R-50 | 8732/8736 N Maplebrook Cir | 54 | 55 | 56 | 56 | 53 | 54 |
| R-51 | 8739/8735/8743/8747 N Maplebrook Cir | 55 | 56 | 57 | 57 | 54 | 55 |
| R-52 | 8751/8755/8759/8763/8767/8771 N Maplebrook Cir | 55 | 56 | 56 | 57 | 54 | 55 |
| R-53 | 8626/8630 S Maplebrook Cir | 56 | 57 | 58 | 58 | 55 | 56 |
| R-54 | 8624/8628 S Maplebrook Cir | 54 | 55 | 55 | 56 | 52 | 53 |
| R-55 | 8618/8622 S Maplebrook Cir | 59 | 60 | 61 | 61 | 58 | 58 |
| R-56 | 8616/8620 S Maplebrook Cir | 55 | 56 | 56 | 57 | 53 | 54 |
| R-57 | 8614/8610 S Maplebrook Cir | 61 | 62 | 63 | 64 | 60 | 61 |
| R-58 | 8608/8612 S Maplebrook Cir | 57 | 58 | 58 | 59 | 55 | 56 |
| R-59 | 8602/8606 S Maplebrook Cir | 67 | 68 | 69 | 69 | 66 | 66 |
| R-60 | 8600/8604 S Maplebrook Cir | 60 | 61 | 61 | 62 | 58 | 59 |
| R-61 | 8574/8578 S Maplebrook Cir | 70 | 70 | 71 | 71 | 68 | 69 |
| R-62 | 8572/8576 S Maplebrook Cir | 61 | 62 | 62 | 63 | 59 | 60 |
| R-63 | 8566/8570 S Maplebrook Cir | 70 | 70 | 71 | 71 | 69 | 69 |
| R-64 | 8566/8568 S Maplebrook Cir | 61 | 62 | 62 | 63 | 59 | 60 |
| R-65 | 8558/8562 S Maplebrook Cir | 70 | 70 | 71 | 71 | 69 | 69 |
| R-66 | 8556/8560 S Maplebrook Cir | 61 | 61 | 62 | 62 | 60 | 60 |
| R-67 | 8550/8554 S Maplebrook Cir | 65 | 66 | 66 | 67 | 66 | 66 |
| R-68 | 8548/8552 S Maplebrook Cir | 60 | 61 | 61 | 62 | 60 | 61 |
| R-69 | 8542/8546 S Maplebrook Cir | 65 | 67 | 66 | 67 | 65 | 67 |
| R-70 | 8540/8544/8532/8536 S Maplebrook Cir | 61 | 62 | 61 | 63 | 61 | 62 |
| R-71 | 8534/8538 S Maplebrook Cir | 69 | 70 | 70 | 71 | 69 | 71 |
| R-72 | 8539/8535/8547/8543 S Maplebrook Cir | 58 | 58 | 59 | 59 | 56 | 57 |
| R-73 | 8501/8505/8509/8515 S Maplebrook Cir | 55 | 56 | 56 | 57 | 53 | 54 |
| R-74 | 85th Ave & W Broadway Ave, North Hennepin Community College | 67 | 70 | 68 | 71 | 67 | 71 |

| Noise Analysis Results – Computed AM and PM Loudest-Hour Sound Levels (L10, dBA) | | | | | | | |
|---|--|---------------|----|---------------|----|------------|----|
| Receiver | Addresses Represented | 2014 Existing | | 2040 No-Build | | 2040 Build | |
| | | AM | PM | AM | PM | AM | PM |
| R-75 | College Pkwy & W Broadway Ave | 62 | 63 | 63 | 64 | 60 | 62 |
| R-76 | 8825 W Broadway Ave | 67 | 68 | 69 | 69 | 67 | 67 |
| R-77 | 8459/8457 Rhode Island Dr | 71 | 71 | 72 | 72 | 70 | 70 |
| R-78 | 8449 Rhode Island Dr | 63 | 64 | 64 | 65 | 62 | 62 |
| R-79 | 8449 Rhode Island Dr/7501 84th Ave | 70 | 70 | 71 | 71 | 68 | 68 |
| R-80 | 8432 Rhode Island Dr/7508 84th Ave | 62 | 63 | 63 | 64 | 61 | 61 |
| R-81 | 7501 84th Ave N/ 7508 83th Ave N | 68 | 69 | 69 | 70 | 68 | 68 |
| R-82 | 7509 84th Ave N/ 7508 83th Ave N | 62 | 64 | 64 | 65 | 61 | 62 |
| R-83 | 7501 83th Ave N/7500 N College Park Dr | 70 | 71 | 71 | 72 | 70 | 70 |
| R-84 | 7506 83th Ave N/7509 N College Park Dr | 63 | 64 | 64 | 65 | 62 | 63 |
| R-85 | N 7501 College Park Dr | 70 | 71 | 71 | 72 | 70 | 71 |
| R-86 | 7507 N College Park Dr | 63 | 64 | 64 | 65 | 62 | 63 |
| R-87 | 8224/8228/8232/8236 Quebec Ct N | 69 | 70 | 70 | 71 | 69 | 70 |
| R-88 | 8208/8212/8216/8220 Quebec Ct N | 69 | 70 | 70 | 71 | 68 | 69 |
| R-89 | 7500 82nd Ave N | 66 | 67 | 67 | 68 | 66 | 67 |
| R-90 | 7504 82nd Ave N | 61 | 63 | 63 | 64 | 61 | 62 |
| R-91 | 8209/8201 Quebec Ct N | 57 | 58 | 58 | 59 | 56 | 57 |
| R-92 | 7501 82nd Ave N | 70 | 71 | 71 | 72 | 69 | 70 |
| R-93 | 7509 82nd Ave N | 61 | 62 | 62 | 63 | 60 | 61 |
| R-94 | Ball Field - North Hennepin Community College | 65 | 67 | 66 | 68 | 64 | 67 |
| R-95 | 7424/7432 Candlewood Dr | 67 | 69 | 67 | 69 | 65 | 68 |
| R-96 | 7416 Candlewood Dr | 59 | 61 | 60 | 62 | 58 | 60 |
| R-97 | 7949/7947 Oregon Ave N | 68 | 70 | 69 | 71 | 67 | 71 |
| R-98 | 7925/7933/7917/7909 Oregon Ave N | 64 | 67 | 65 | 68 | 63 | 66 |
| R-99 | 7433/7901 Oregon Ave N | 63 | 66 | 64 | 67 | 62 | 65 |
| R-100 | 7421 Oregon Ave N | 58 | 60 | 59 | 61 | 56 | 59 |
| R-101 | 7418 78th Ave N | 59 | 61 | 59 | 61 | 57 | 59 |
| R-102 | 7424 78th Ave N | 67 | 69 | 68 | 70 | 65 | 68 |
| R-103 | 7916/7910/7934 Oregon Ave N | 54 | 56 | 55 | 57 | 53 | 55 |
| R-104 | 7412 Oregon Ave N | 54 | 56 | 55 | 56 | 52 | 54 |
| R-105 | 7940/7937 Oregon Ave N | 62 | 64 | 63 | 65 | 61 | 64 |
| R-106 | 7849 W Broadway Ave - Brooklyn Park Evangelical Church | 62 | 64 | 63 | 65 | 61 | 63 |
| LT-D | Measurement Site | 68 | 69 | 69 | 70 | 67 | 68 |
| ST-3 | Measurement Site | 65 | 68 | 67 | 69 | 64 | 67 |
| LT-E | Measurement Site | 70 | 70 | 72 | 72 | 70 | 70 |
| LT-2 | Measurement Site | 68 | 70 | 70 | 71 | 66 | 68 |
| LT-F | Measurement Site | 62 | 63 | 63 | 64 | 59 | 61 |

NOISE KEY

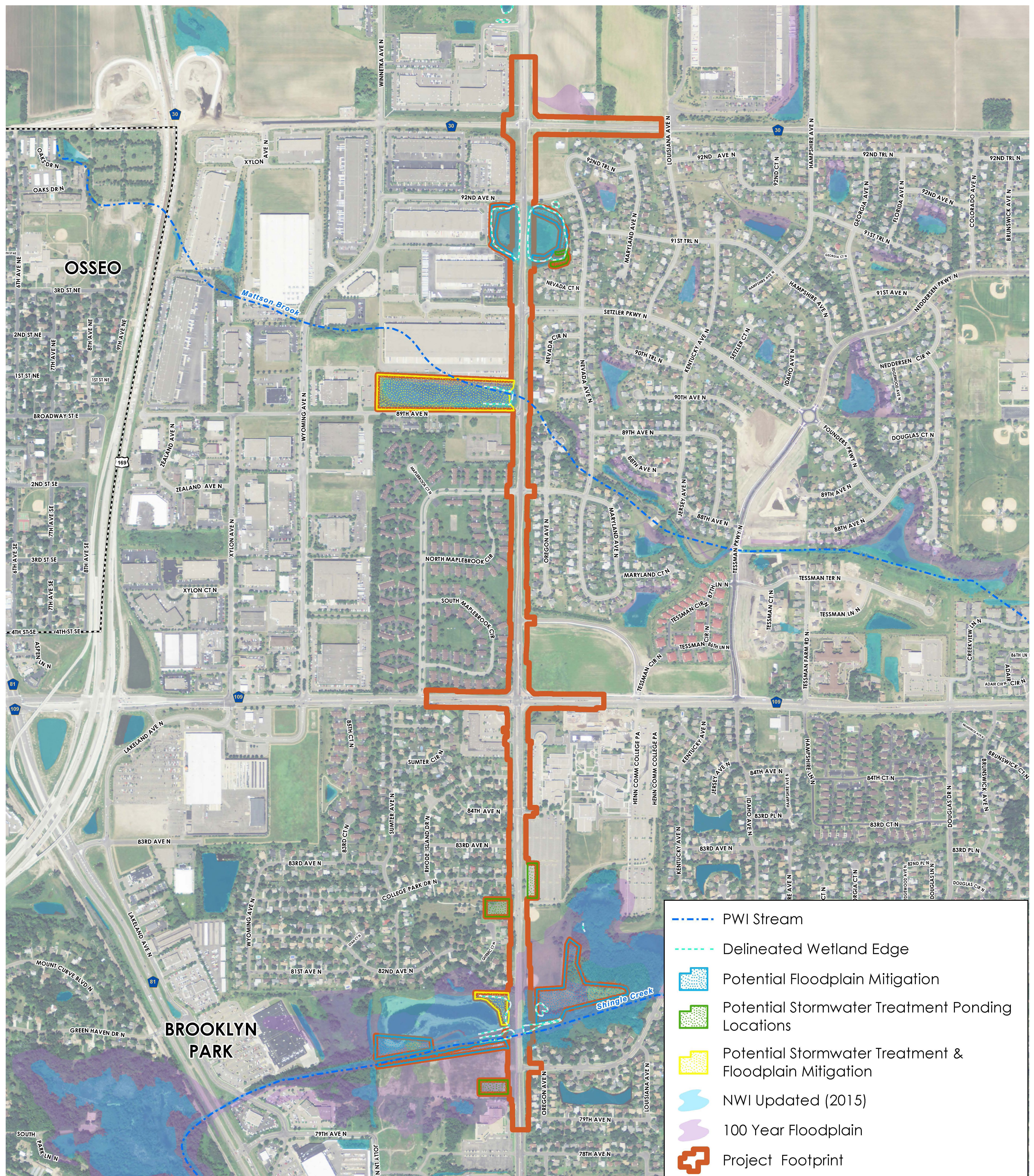
dB Levels



LRT noise impacts, such as train bells and vibration, will be evaluated separately in winter/spring 2016.

What are the stormwater impacts?

Stormwater impacts for road reconstruction are generated by additional pavement for the road and the trail.



| | Impact (acres) |
|------------------------------------|----------------|
| Potential Floodplain Mitigation | 10.0 |
| Potential Storm water & Floodplain | 9.3 |
| Potential Storm water Treatment | 2.5 |
| Wetland | 11.9 |
| Floodplain | 17.0 |

What are the property impacts?

Acreage and Parcels impacted *without a signal* at Maplebrook Parkway

| Acquisition type | Acreage | Parcels |
|------------------------|---------|---------|
| Permanent Easement | 0.9 | 38 |
| Permanent Right of way | 6.4 | 81 |
| Temporary Easement | 10.2 | 109 |

Acreage and Parcels impacted *with a signal* at Maplebrook Parkway

| Acquisition type | Acreage | Parcels |
|------------------------|---------|---------|
| Permanent Easement | 2.0 | 53 |
| Permanent Right of way | 6.4 | 81 |
| Temporary Easement | 10.0 | 119 |

This option also includes the relocation of a six-plex townhome complex.

What are the types of acquisition?

Full Acquisition

- Entire property is needed or the new right-of-way line goes through an existing structure

Partial Acquisition

- Most common type
- Only part of property is acquired
- Owner retains ownership of the rest of the property

Permanent Easements

- Public entity purchases certain rights such as drainage, utility, wall, trail or stormwater ponding
- Owner retains remaining property rights

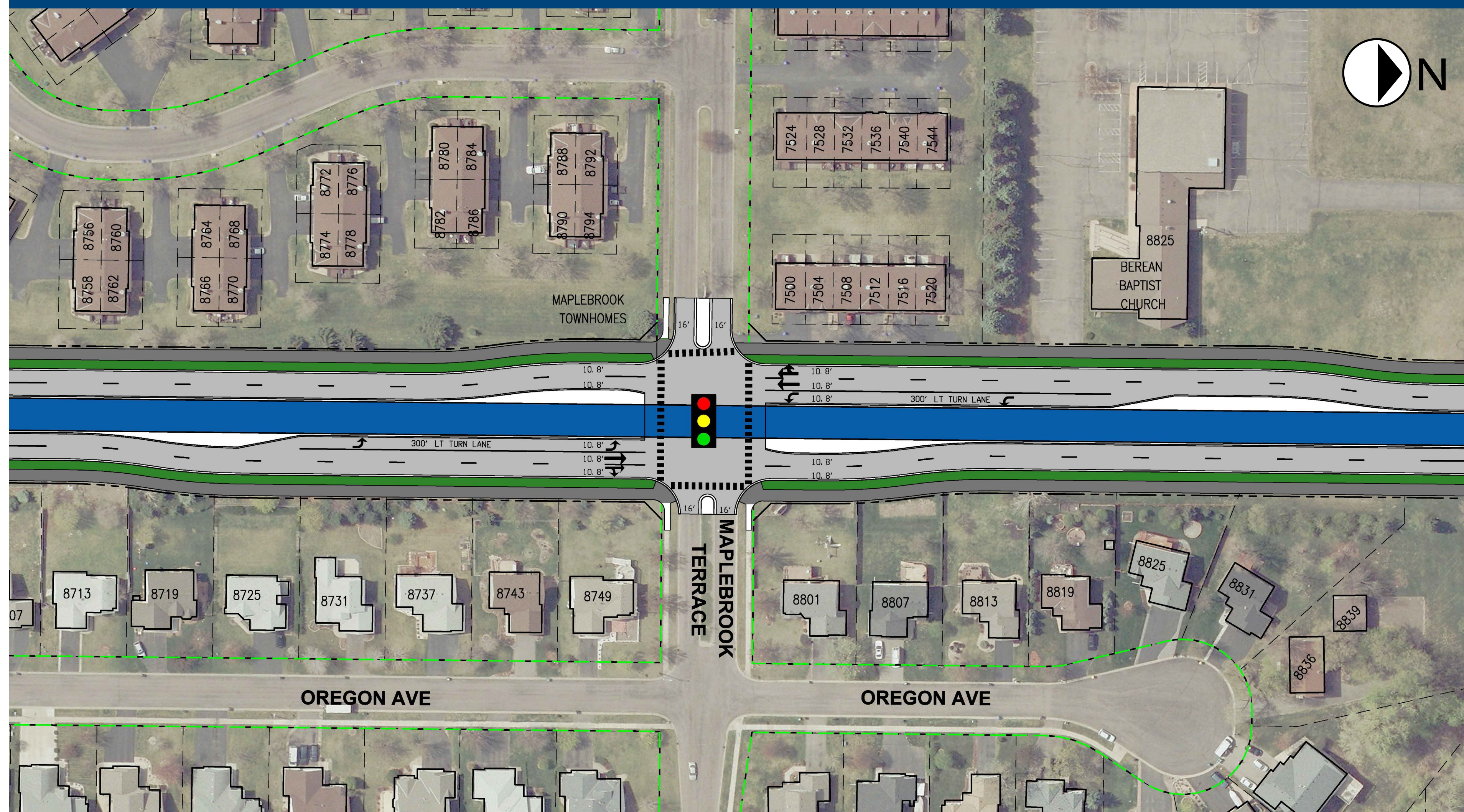
Temporary Easement

- Right for public entity to use property for construction purposes during a defined period of time
- Full ownership reverts back to owner, upon expiration

Visit the roll plot map of the corridor to discuss impacts

What are the Maplebrook signal location options?

1 West Broadway Signal @ Maplebrook Parkway/ Maplebrook Terrace



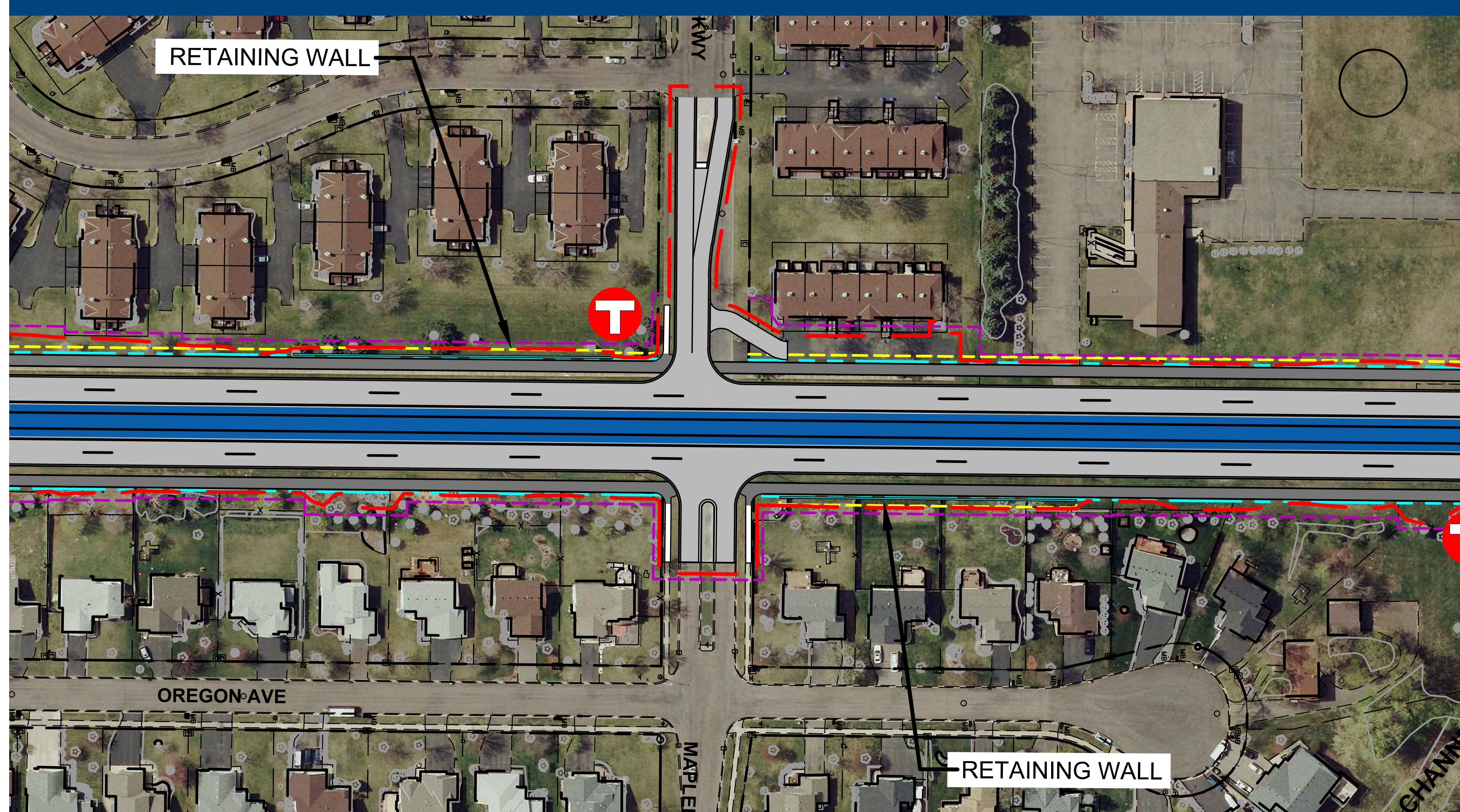
PROS

- Provides full access (left turn lanes on West Broadway) to Maplebrook Terrace and Maplebrook Parkway
- Provides secondary full access to Maplebrook Estates Townhomes
- Adds signalized pedestrian and bicycle crossing of West Broadway

CONS

- Additional right-of-way required; acquisition and relocation of six-plex within Maplebrook Estates
- Potential traffic delays due to one additional signal
- Additional at-grade roadway/LRT crossing
- Potential for increased noise

2 Right-in – Right-out @ West Broadway



PROS

- Minimizes property impacts, allowing Maplebrook Estates six-plex to remain
- Reduced traffic delays on West Broadway due to one less signal

CONS

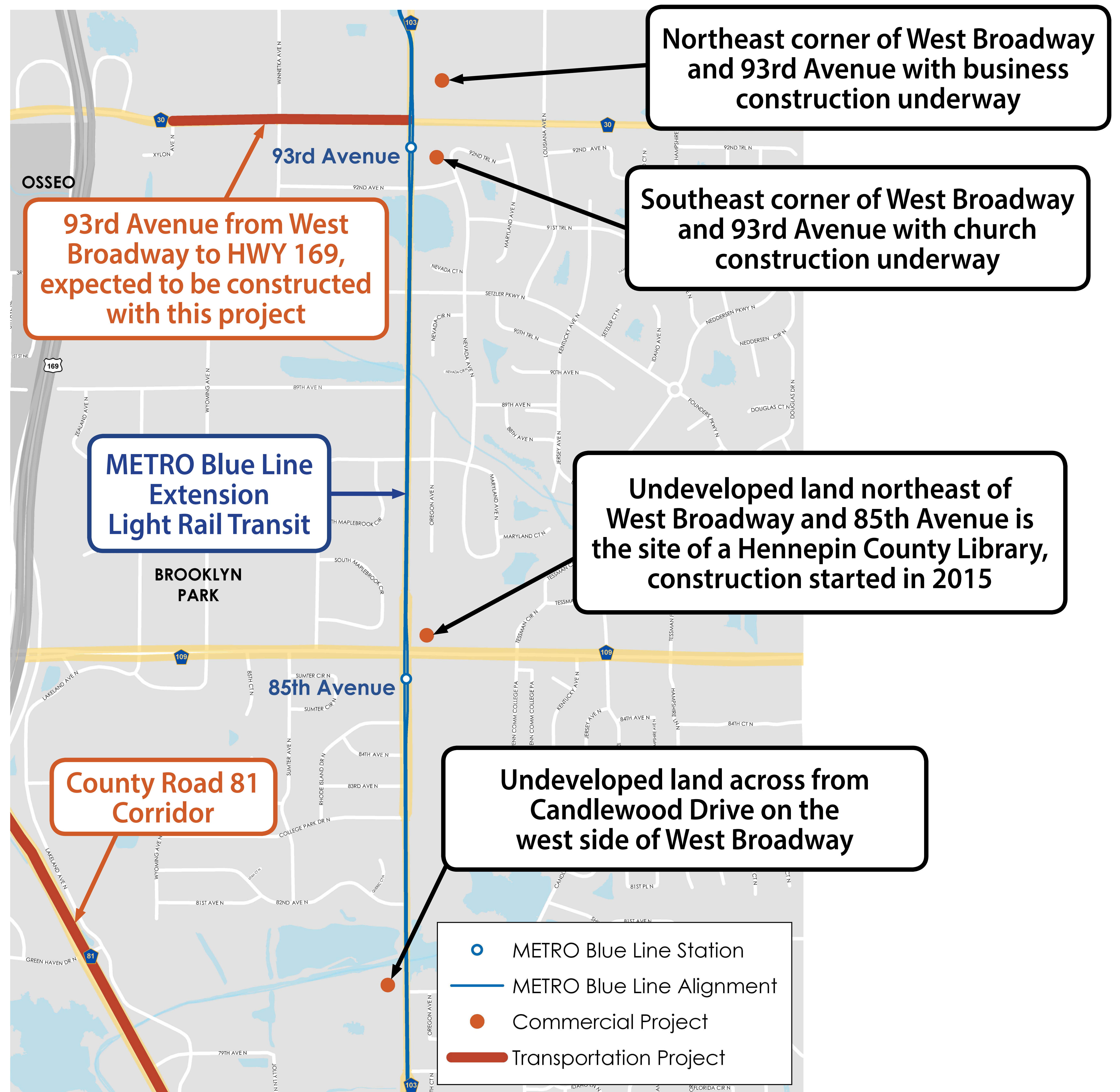
- Limited access to and from West Broadway from adjacent neighborhoods
- Pedestrian and bicycle crossing of West Broadway will need to occur at 85th Ave or Setzler Pkwy

What are the cumulative impacts?

The environmental review includes a high-level assessment of potential combined impacts of this project and future projects listed here.

In the evaluation, no mitigation measures were proposed for these cumulative impacts.

The LRT environmental study will include a more robust cumulative impacts analysis.

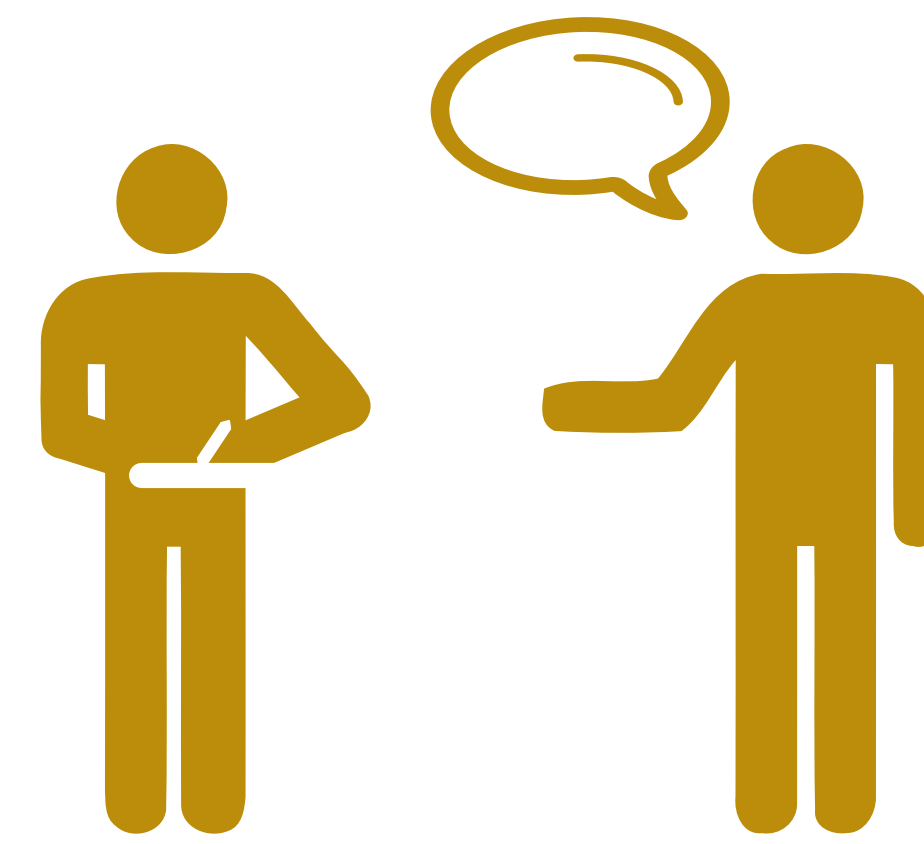


What you can do...

West Broadway reconstruction project:



Submit a comment form



Tell project staff and your city council members your thoughts related to a traffic signal at the West Broadway and Maplebrook Parkway/Terrace intersection



Get your neighbors and friends involved:

- *Take comment forms and flyers to share*
- *Suggest they visit hennepin.us/westbroadway to review materials from this open house and provide comments*



Watch for the environmental assessment worksheet to be published in September. Read the report and provide comments.

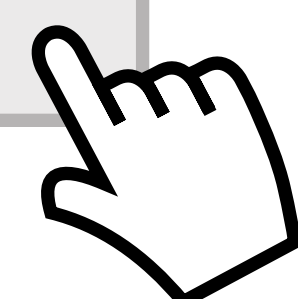
- **Online:** hennepin.us/westbroadway
- **In Libraries:**
*Hennepin County Library
8600 Zane Ave N
Brooklyn Park, MN 55443*
- **Via email:** sign-up at the Welcome table to be notified

METRO Blue Line Extension:



Check out the other part of this meeting to learn more about this light rail transit project and get your questions answered.

Name@email.com



Subscribe to updates at bluelineext.org to find out about future public open house events on anticipated environmental impacts, including noise and vibration.