

# STAGING MATRIX FOR TEMPORARY BYPASS OPTIONS

## CSAH 112

1 Single Lane (Westbound Only)		Figure 1A/1B
Additional Cost for Bypass:	+\$230,000	<b>Impacts/Issues:</b> <ul style="list-style-type: none"> <li>▪Significant tree removal at townhome property</li> <li>▪Detour for eastbound direction</li> <li>▪No pedestrian access</li> <li>▪Emergency vehicle access/routing</li> <li>▪Partial width (2-11' lanes) built in 2017, full width completed in 2018</li> </ul>
Bypass Duration:	± 4 months <small>(Aug '17 - Nov '17)</small>	
Right of Way Impacts:	14000 SF	

5 Single Lane with Signal Control		Figure 5A/5B
Additional Cost for Bypass:	+\$850,000	<b>Impacts/Issues:</b> <ul style="list-style-type: none"> <li>▪Complex traffic control with high risk to contractor/owner</li> <li>▪Signal needed at 1605 Wayzata Blvd to prevent driver confusion</li> <li>▪Long queue lengths/back ups/U-turns</li> <li>▪Tree removal at townhome property</li> <li>▪No pedestrian access</li> <li>▪Partial width (2-11' lanes) built in 2017, full width completed in 2018</li> <li>**Bypass will be inplace during winter months</li> </ul>
Bypass Duration:	± 10 months <small>(Aug '17 - May '18)**</small>	
Right of Way Impacts:	10100 SF	

2 Single Lane (Eastbound Only)		Figure 2A/2B
Additional Cost for Bypass:	+\$230,000	<b>Impacts/Issues:</b> <ul style="list-style-type: none"> <li>▪Significant tree removal at townhome property</li> <li>▪Detour for westbound direction</li> <li>▪No pedestrian access</li> <li>▪Emergency vehicle access/routing</li> <li>▪Partial width (2-11' lanes) built in 2017, full width completed in 2018</li> </ul>
Bypass Duration:	± 4 months <small>(Aug '17 - Nov '17)</small>	
Right of Way Impacts:	14000 SF	

6 Two Lanes		Figure 6A/6B
Additional Cost for Bypass:	+\$1,430,000	<b>Impacts/Issues:</b> <ul style="list-style-type: none"> <li>▪Significant tree removal at townhome property</li> <li>▪No pedestrian access</li> <li>▪Significant impacts to 1605 Wayzata Blvd property</li> <li>▪Complex private utility relocation (two relocations needed)</li> <li>▪Partial width (2-11' lanes) built in 2017, full width completed in 2018</li> <li>**Bypass will be inplace during winter months</li> </ul>
Bypass Duration:	± 10 months <small>(Sept '17 - June '18)**</small>	
Right of Way Impacts:	18400 SF	

3 Single Lane (Westbound Only) with Pedestrian Access		Figure 3A/3B
Additional Cost for Bypass:	+\$1,080,000	<b>Impacts/Issues:</b> <ul style="list-style-type: none"> <li>▪Significant tree removal at townhome property</li> <li>▪Detour for eastbound direction</li> <li>▪Emergency vehicle access/routing</li> <li>▪Complex private utility relocation (two relocations possible)</li> <li>▪Partial width (2-11' lanes) built in 2017, full width completed in 2018</li> <li>**Bypass will be inplace during winter months</li> </ul>
Bypass Duration:	± 10 months <small>(Sept '17 - June '18)**</small>	
Right of Way Impacts:	14000 SF	

7 Single Lane (Eastbound AM/Westbound PM)		Figure 7A/7B
Additional Cost for Bypass:	+\$810,000	<b>Impacts/Issues:</b> <ul style="list-style-type: none"> <li>▪Complex traffic control with high risk to contractor/owner</li> <li>▪Contractor to "clear" the bypass at AM/PM reversal</li> <li>▪Potential for back ups/large number of U-turns</li> <li>▪Signaling needed all accesses between Wolf Pointe and Hwy 12 to indicate current traffic direction</li> <li>▪Tree removal at townhome property</li> <li>▪Detour signing for eastbound &amp; westbound</li> <li>▪No pedestrian access</li> <li>▪Emergency vehicle access/routing</li> <li>▪Partial width (2-11' lanes) built in 2017, full width completed in 2018</li> <li>**Bypass will be inplace during winter months</li> </ul>
Bypass Duration:	± 10 months <small>(Aug '17 - May '18)**</small>	
Right of Way Impacts:	10100 SF	

4 Single Lane (Eastbound Only) with Pedestrian Access		Figure 4A/4B
Additional Cost for Bypass:	+\$1,080,000	<b>Impacts/Issues:</b> <ul style="list-style-type: none"> <li>▪Significant tree removal at townhome property</li> <li>▪Detour for westbound direction</li> <li>▪Emergency vehicle access/routing</li> <li>▪Complex private utility relocation (two relocations possible)</li> <li>▪Partial width (2-11' lanes) built in 2017, full width completed in 2018</li> <li>**Bypass will be inplace during winter months</li> </ul>
Bypass Duration:	± 10 months <small>(Sept '17 - June '18)**</small>	
Right of Way Impacts:	14000 SF	

8 Full Closure		Figure 8A/8B
Additional Cost for Bypass:	Base Value (\$0)	<b>Impacts/Issues:</b> <ul style="list-style-type: none"> <li>▪Significant tree removal at townhome property</li> <li>▪Detour routing for both directions</li> <li>▪No pedestrian access</li> <li>▪Emergency vehicle access/routing</li> <li>▪Full width constructed in Year 1</li> </ul>
Closure Duration:	± 4 months <small>(July '17 - Oct '17)</small>	
Right of Way Impacts:	14000 SF	

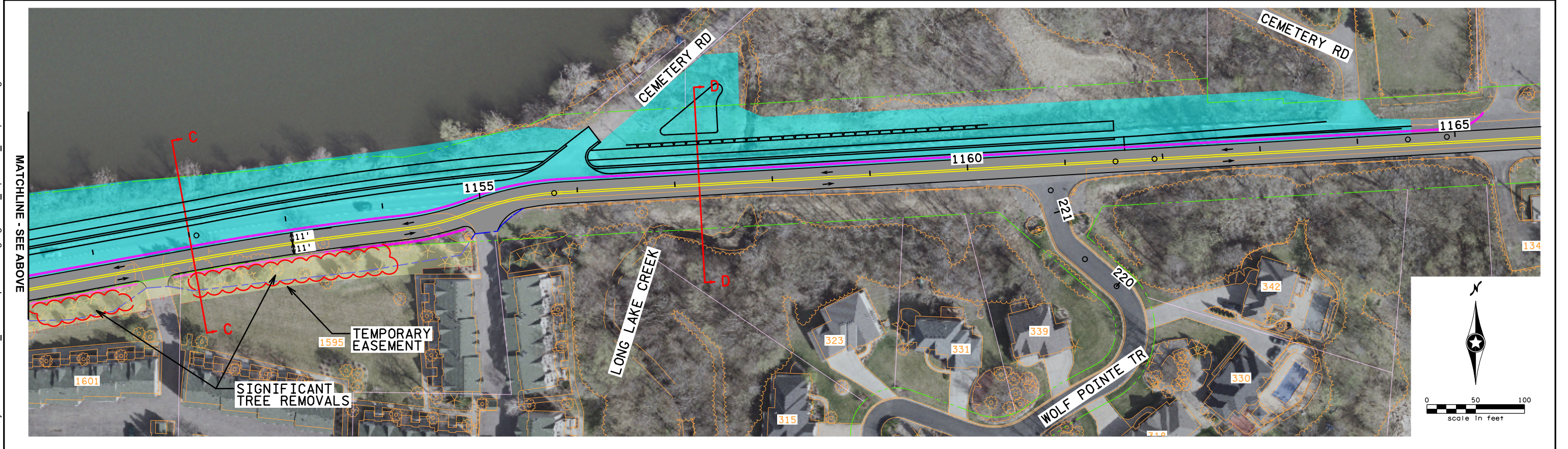
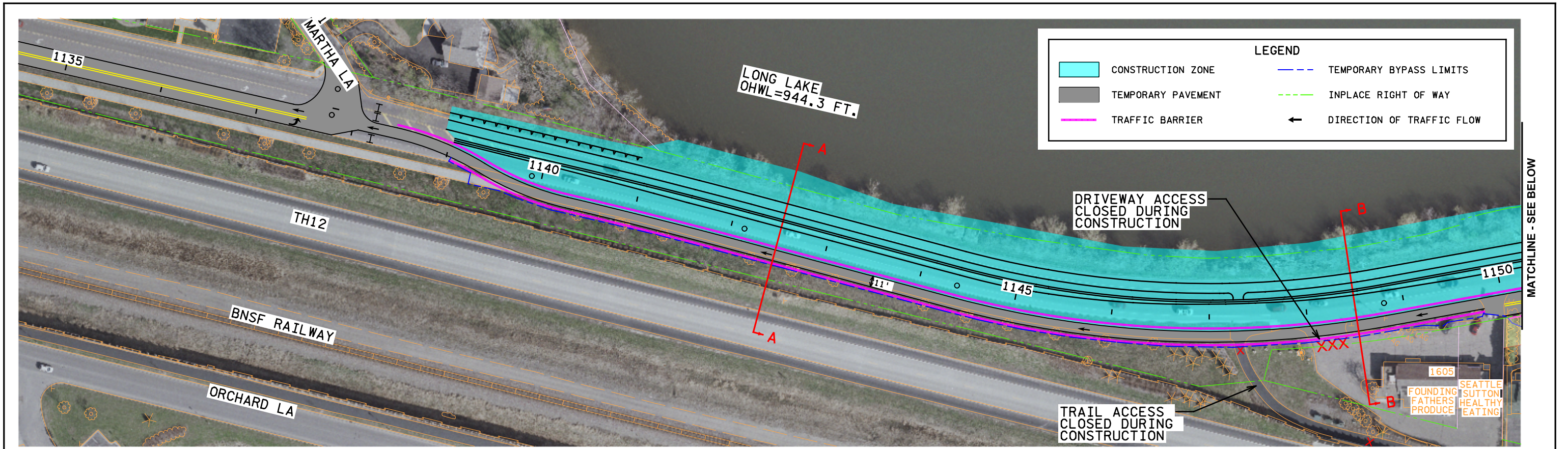
**Assumptions:**

- No construction in Long Lake during fish spawning (April 1-June 30)
- Bypass Duration includes the duration that traffic will be on the bypass. Does not include time to construct or remove the bypass.

PRELIMINARY  
SUBJECT TO CHANGE

8/13/15





H:\Projects\8483\CAD\_BIM\Graphics\Staging\8483\_Option 1\_Graphic A.dgn

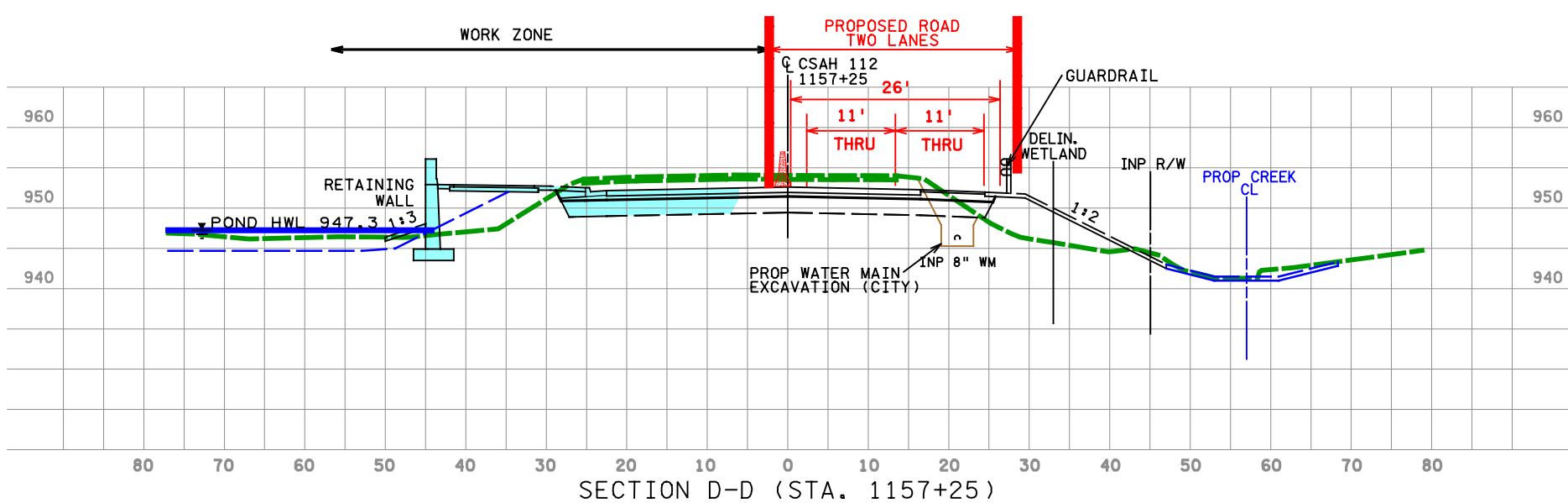
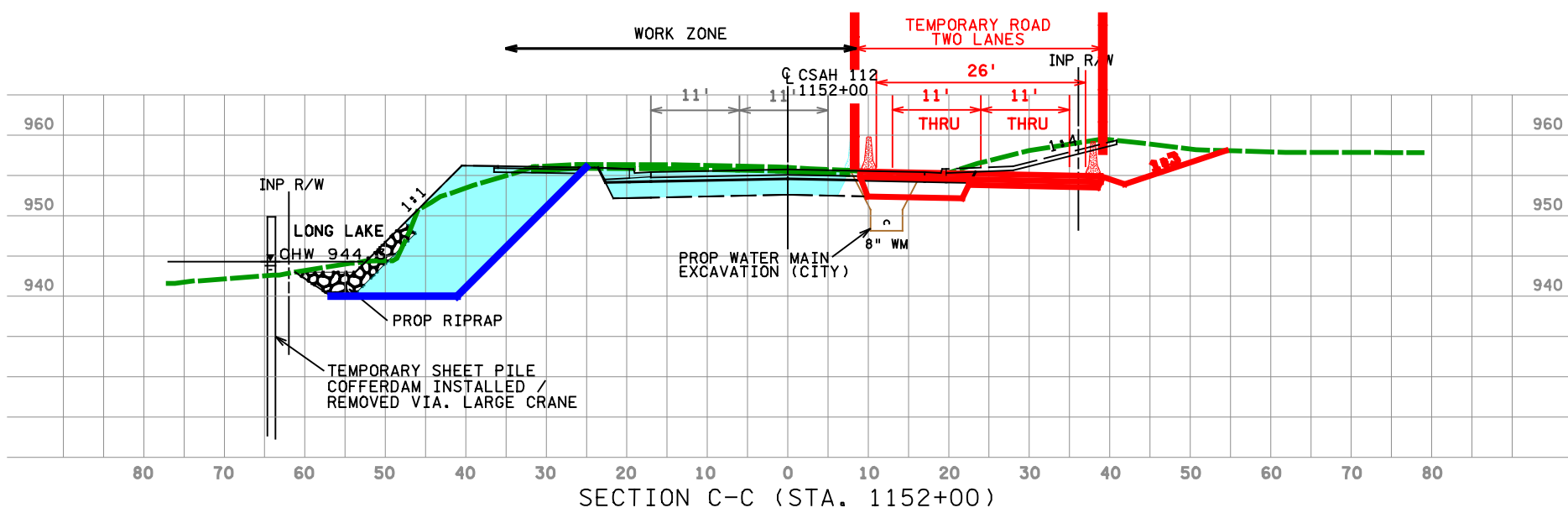
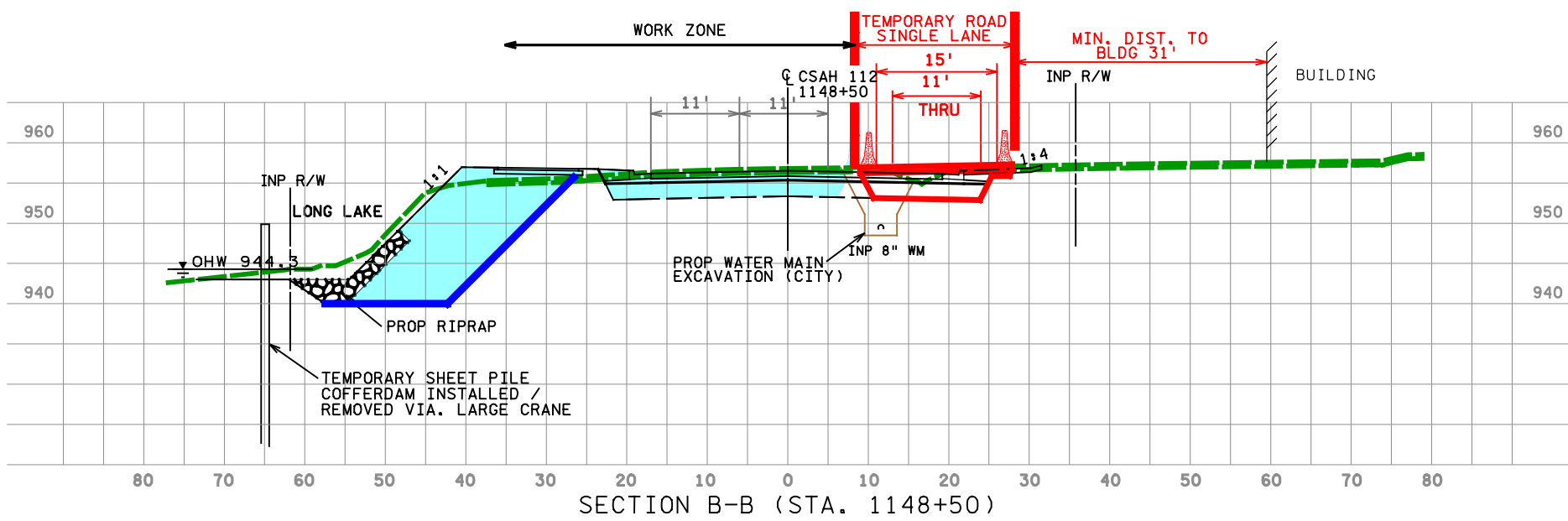
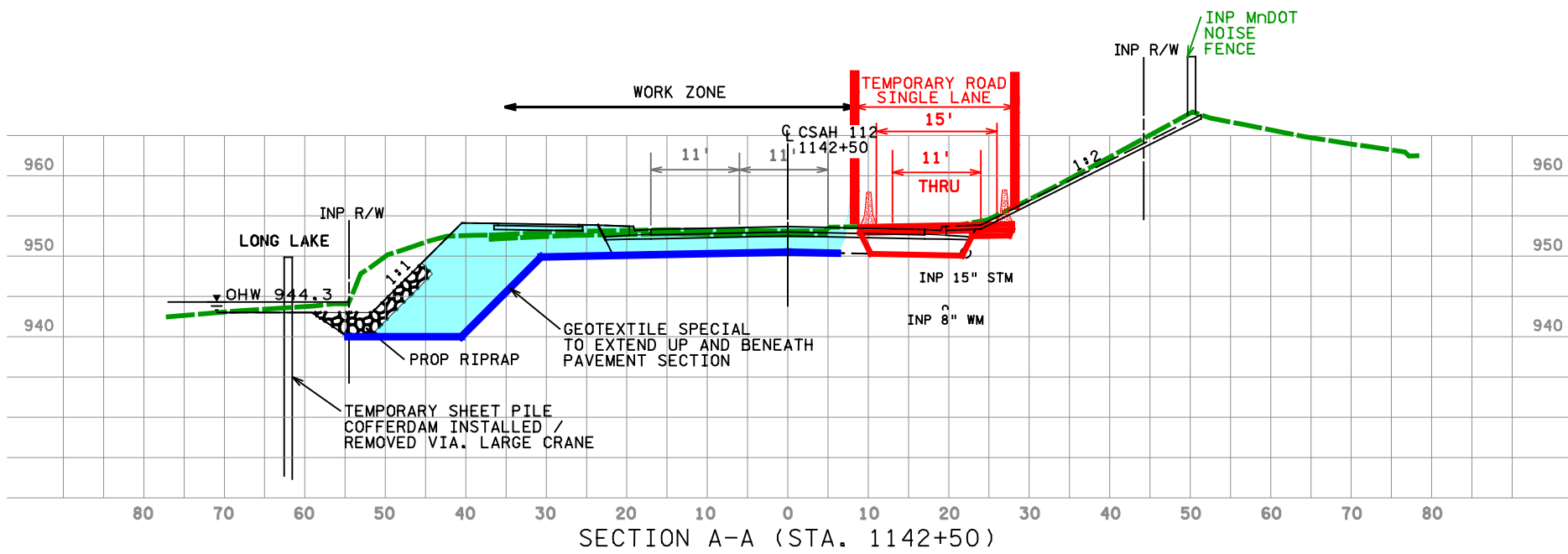
MATCHLINE - SEE ABOVE

MATCHLINE - SEE BELOW

**PRELIMINARY**  
**SUBJECT TO CHANGE**  
 8/12/15

Figure 1A





H:\Projects\18483\CAD\_BIM\Graphics\Staging\18483\_Option 1\_Cross Section\_Graphic B.dgn



**Temporary Bypass Option 1 - Cross Sections**

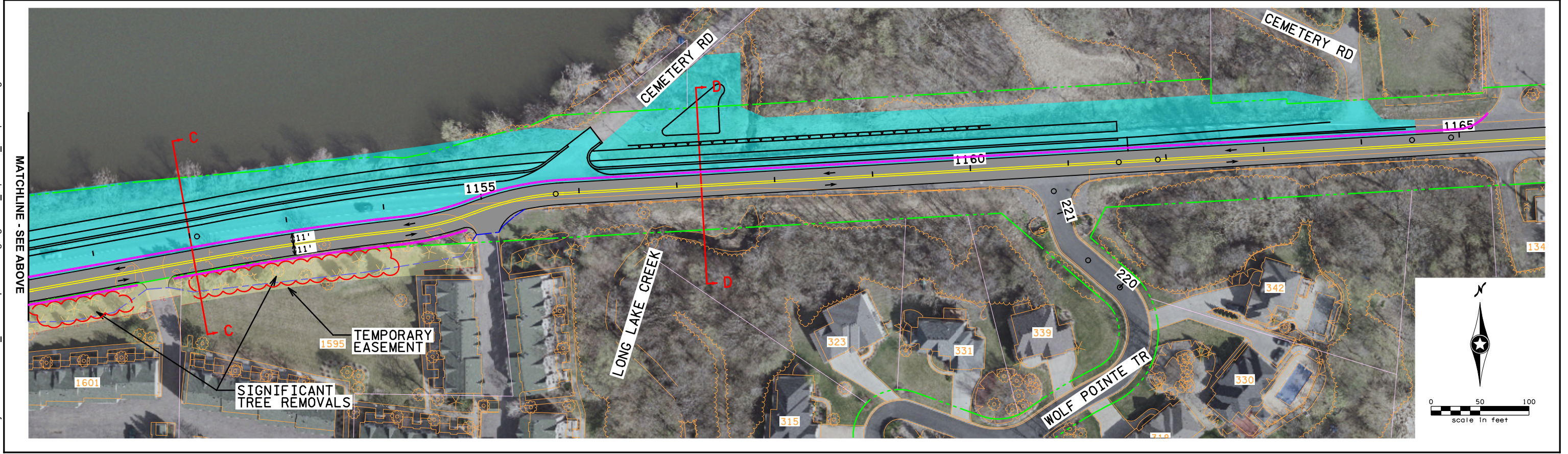
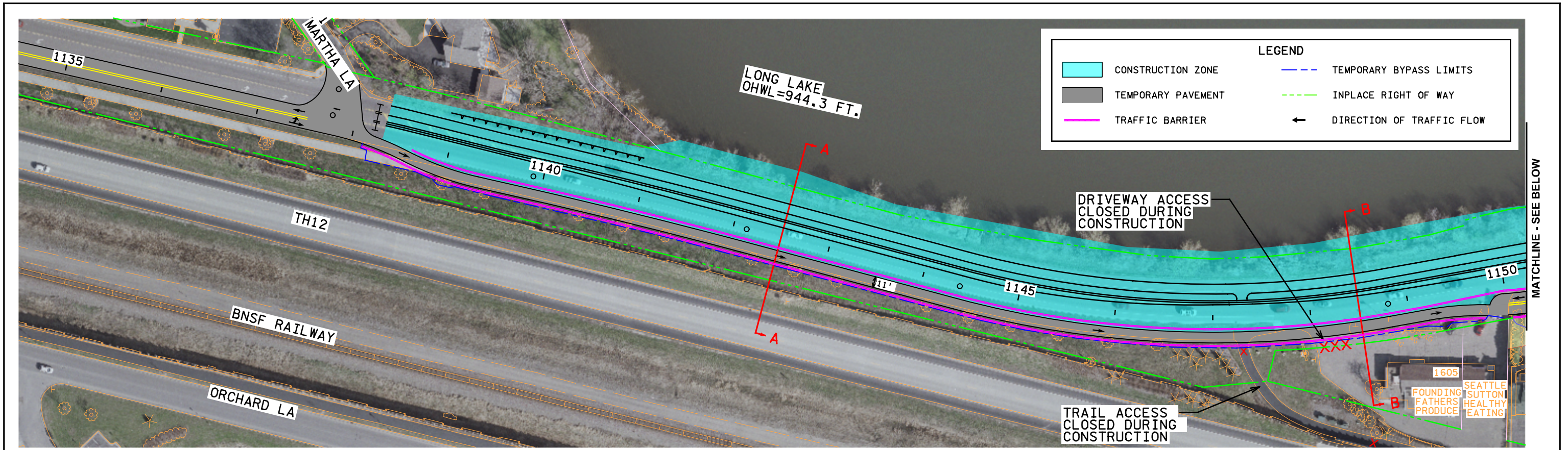
CSAH 112 - Phase 1  
Hennepin County

Job #  
8/10/2015

**PRELIMINARY  
SUBJECT TO CHANGE  
8/12/15**

Figure 1B



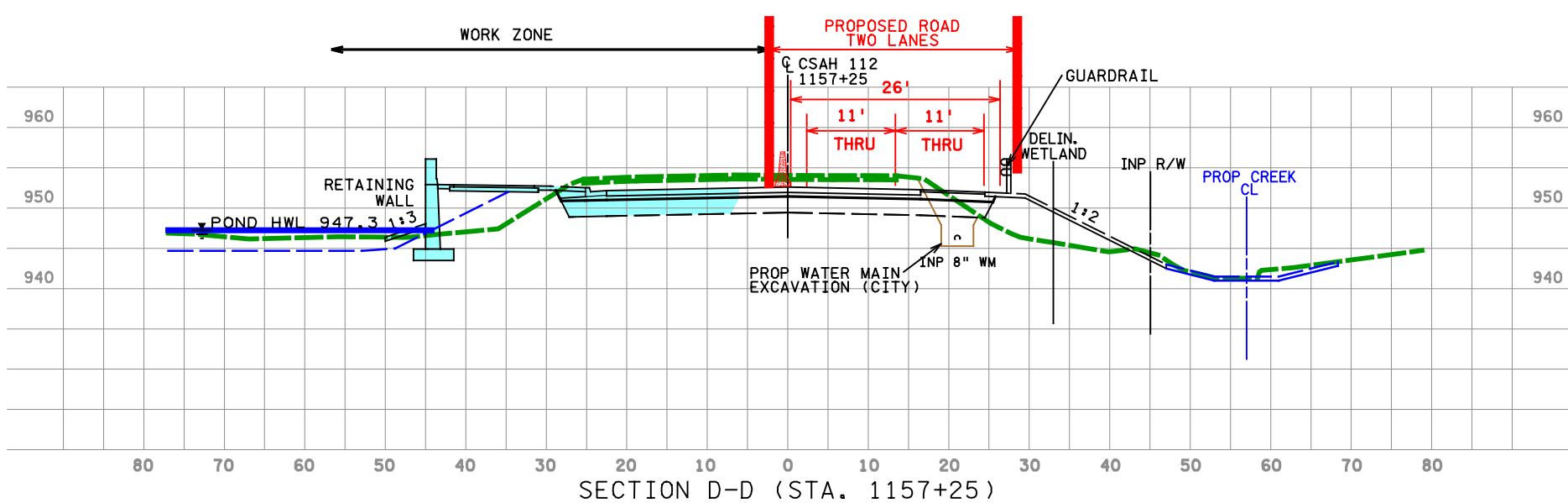
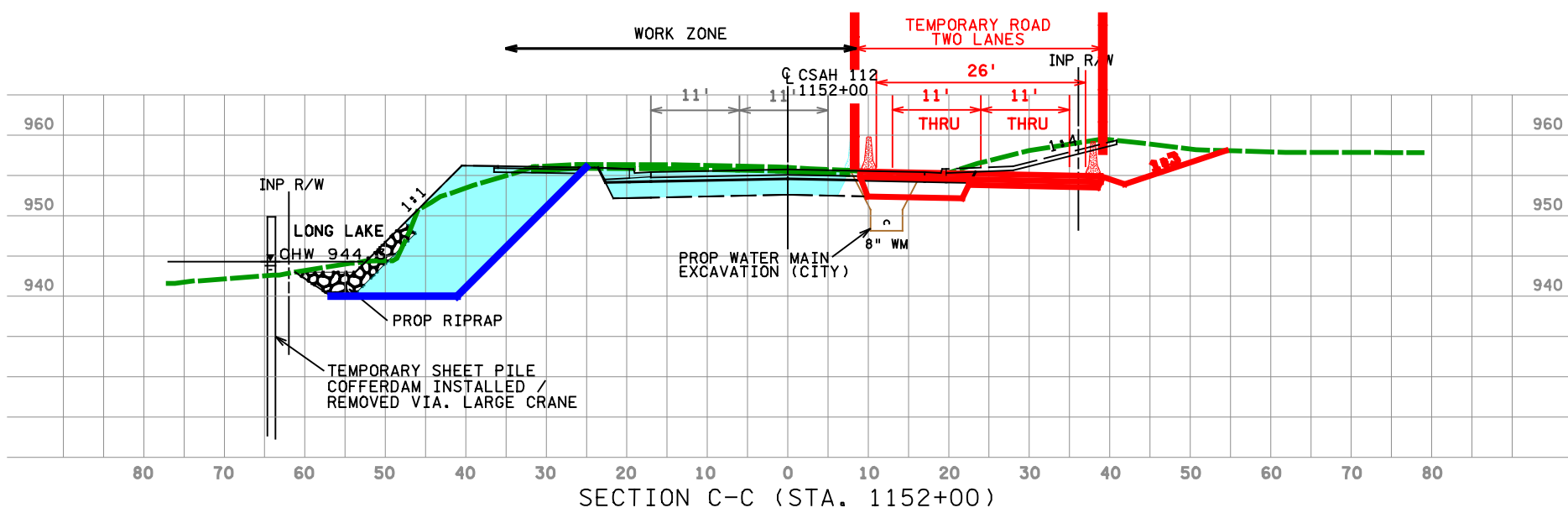
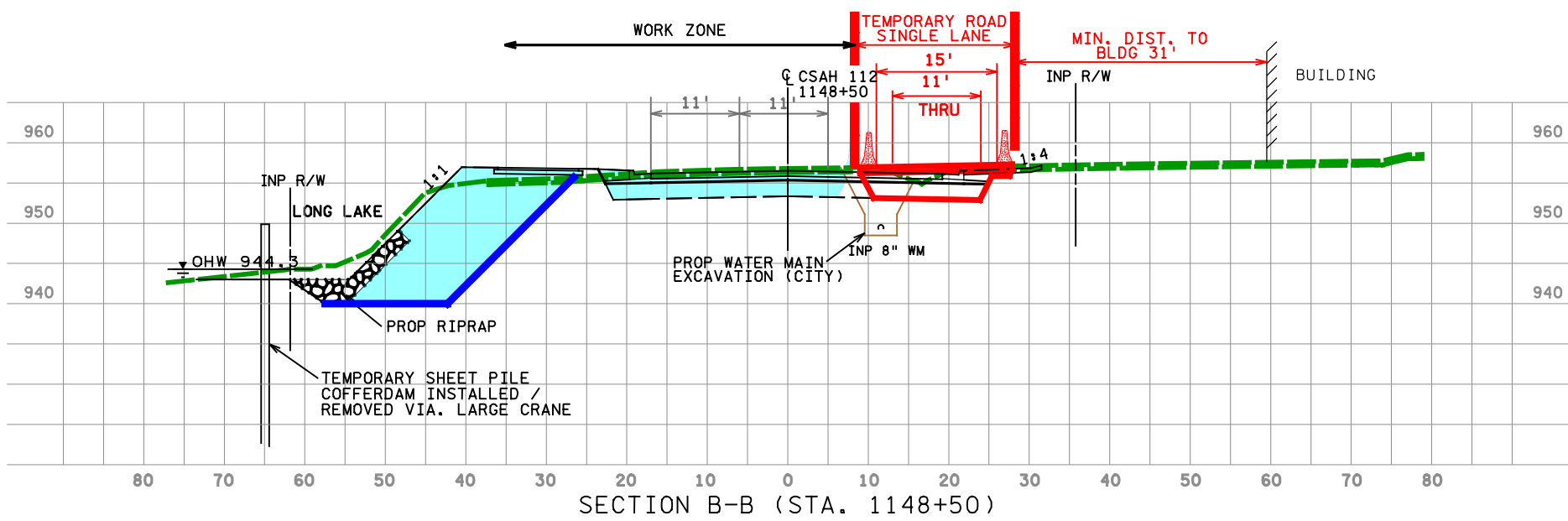
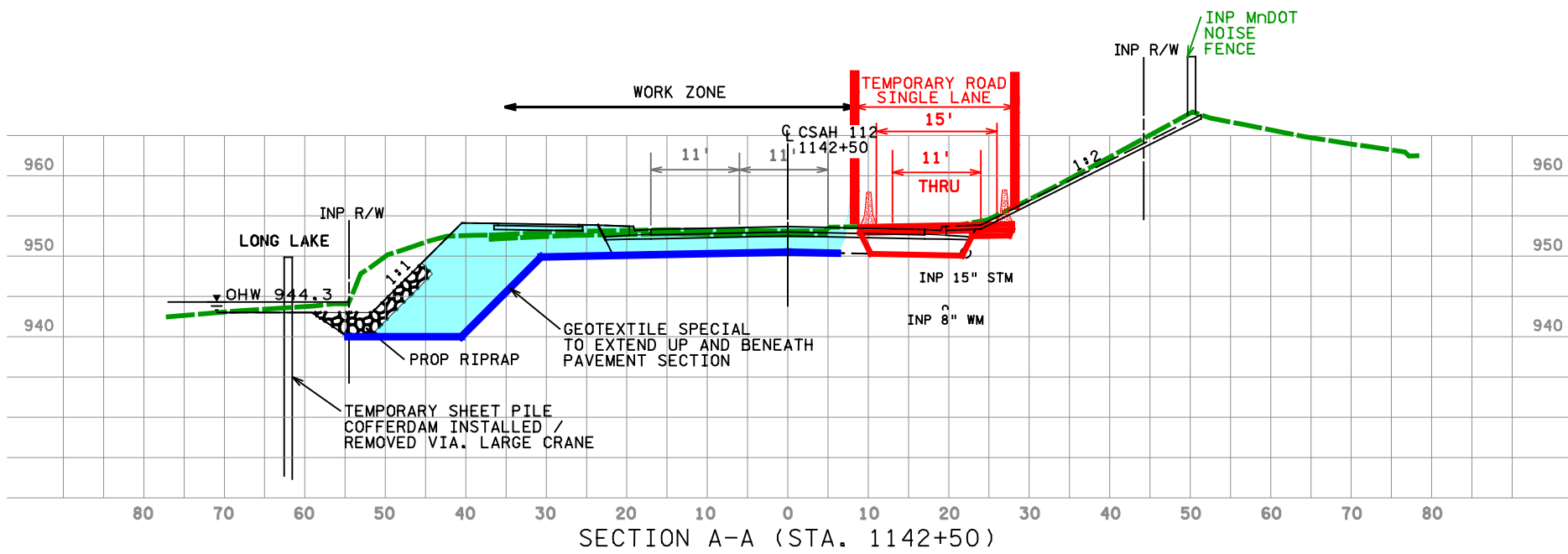


H:\Projects\8483\CAD\_BIM\Graphics\Staging\8483\_Option 2\_Graphic A.dgn

MATCHLINE - SEE ABOVE

MATCHLINE - SEE BELOW





H:\Projects\18483\CAD\_BIM\Graphics\Staging\18483\_Option 2\_Cross Section\_Graphic B.dgn



**Temporary Bypass Option 2 - Cross Sections**

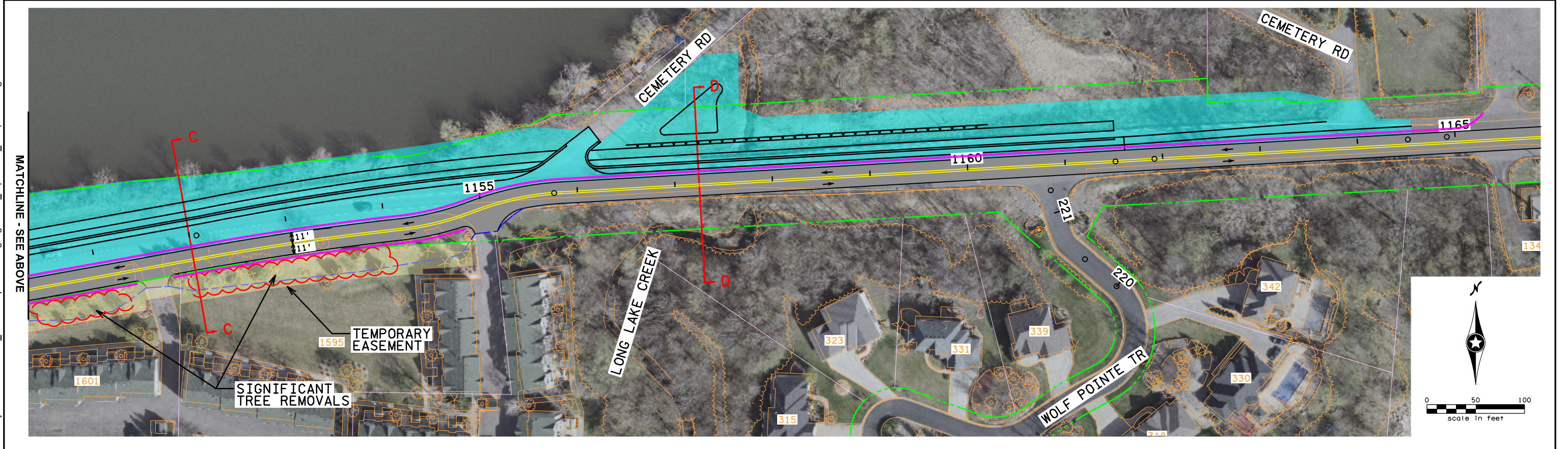
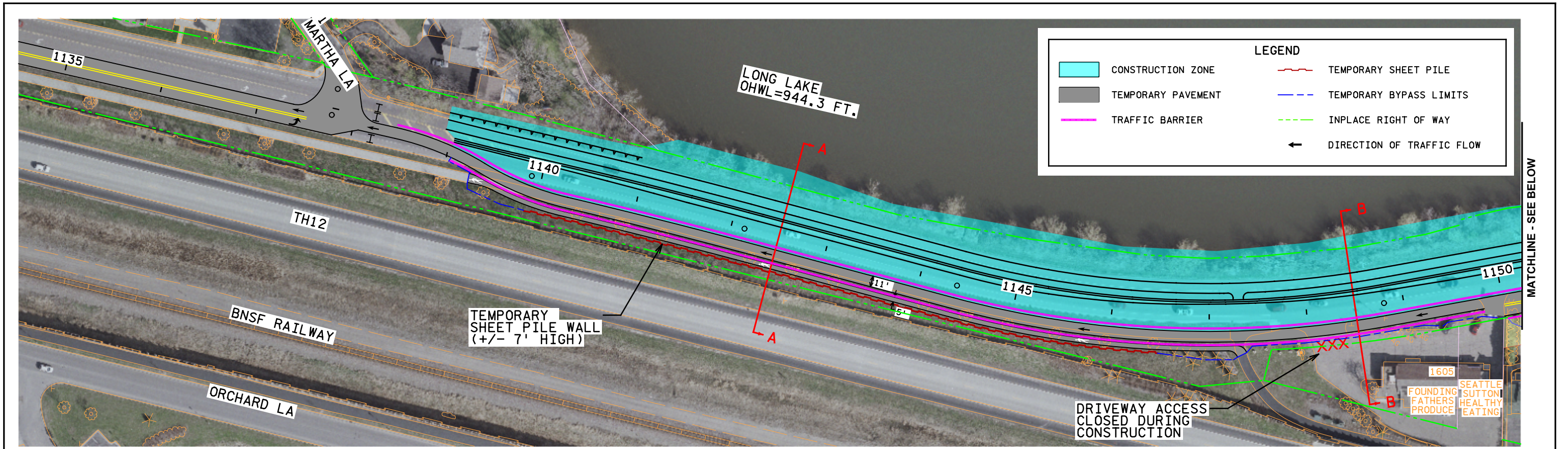
CSAH 112 - Phase 1  
Hennepin County

Job #  
8/10/2015

**PRELIMINARY  
SUBJECT TO CHANGE  
8/12/15**

Figure 2B





H:\Projects\8483\CAD\_BIM\Graphics\Staging\8483\_Option 3\_Graphic A.dgn

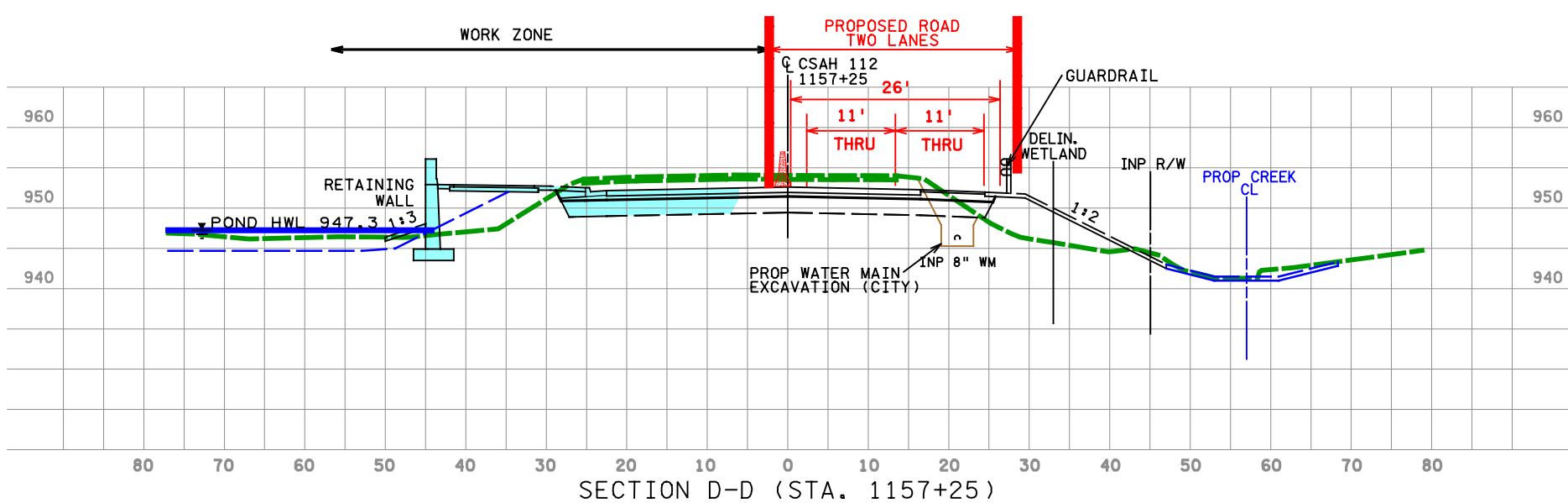
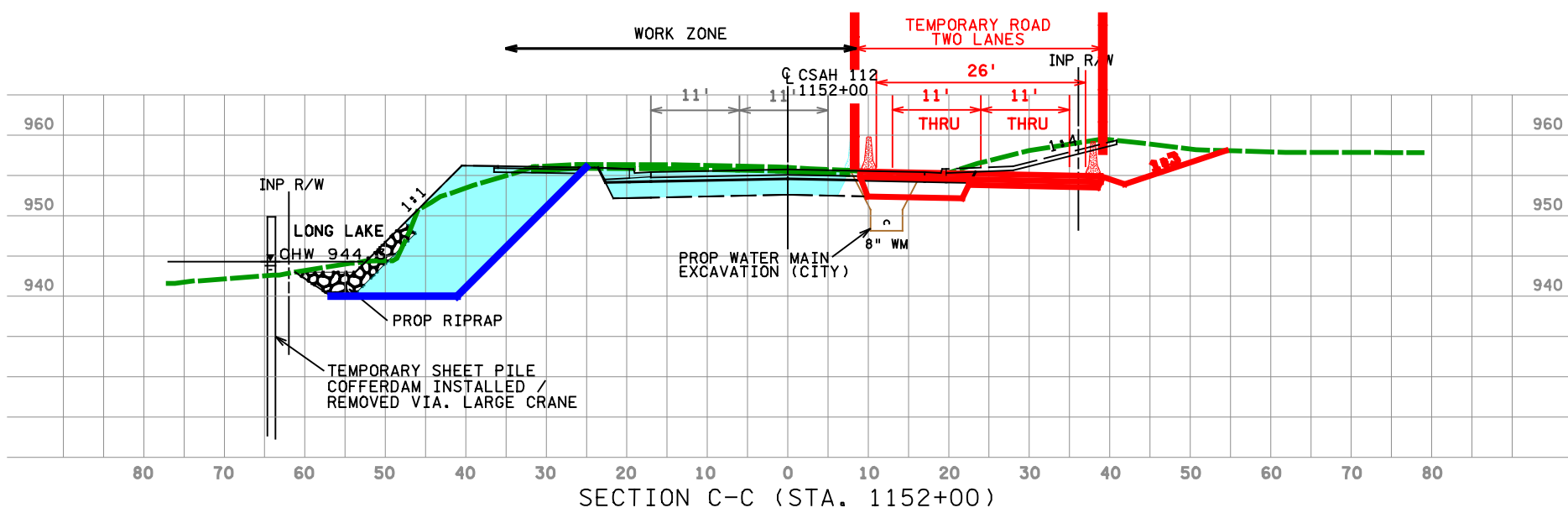
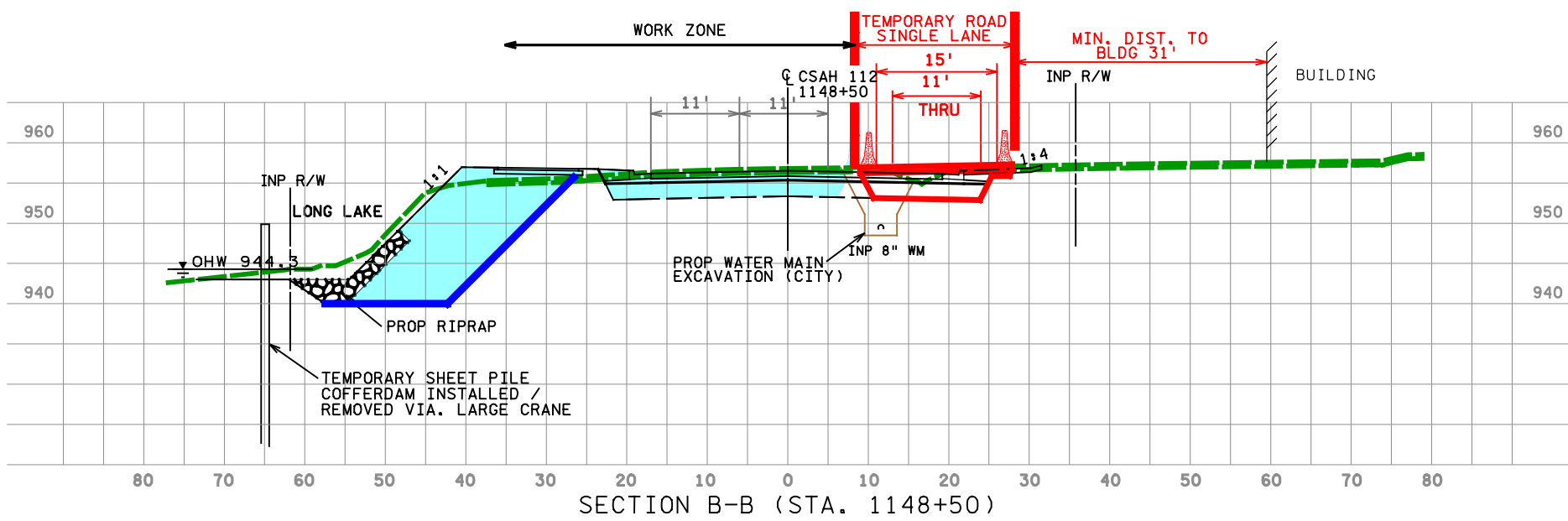
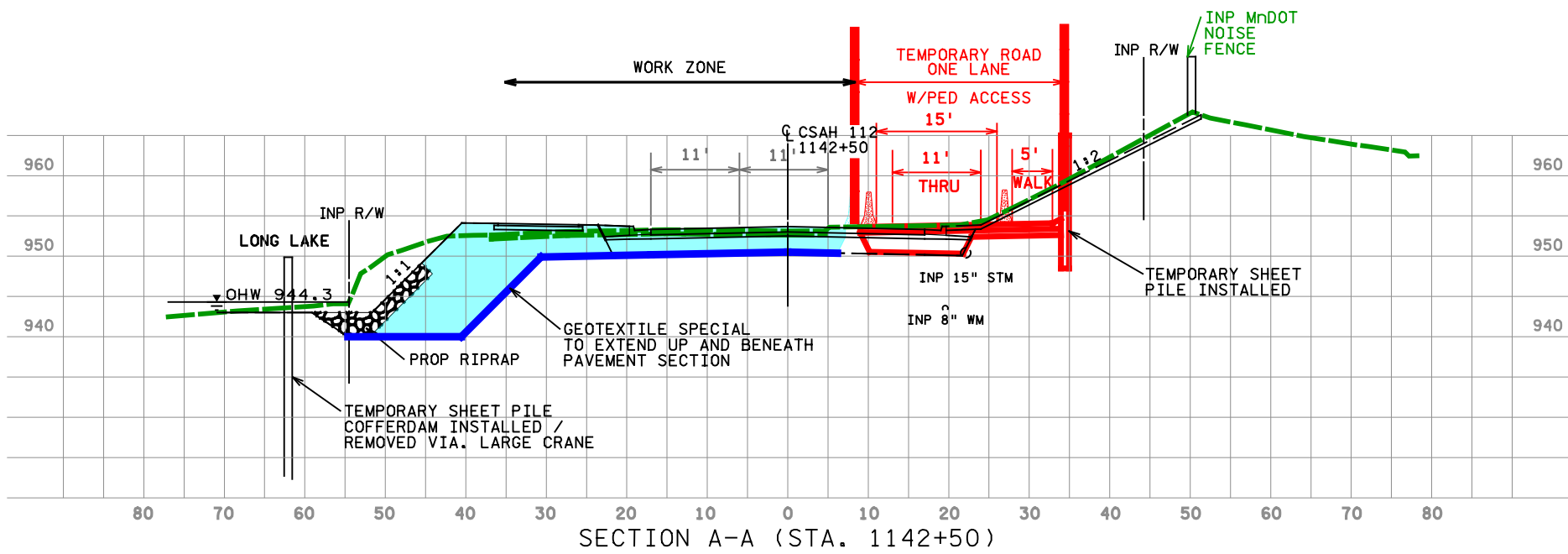
MATCHLINE - SEE ABOVE

MATCHLINE - SEE BELOW

**PRELIMINARY**  
**SUBJECT TO CHANGE**  
 8/12/15

Figure 3A





H:\Projects\18483\CAD\_BIM\Graphics\Staging\18483\_Option 3\_Cross Section\_Graphic B.dgn



**Temporary Bypass Option 3 - Cross Sections**

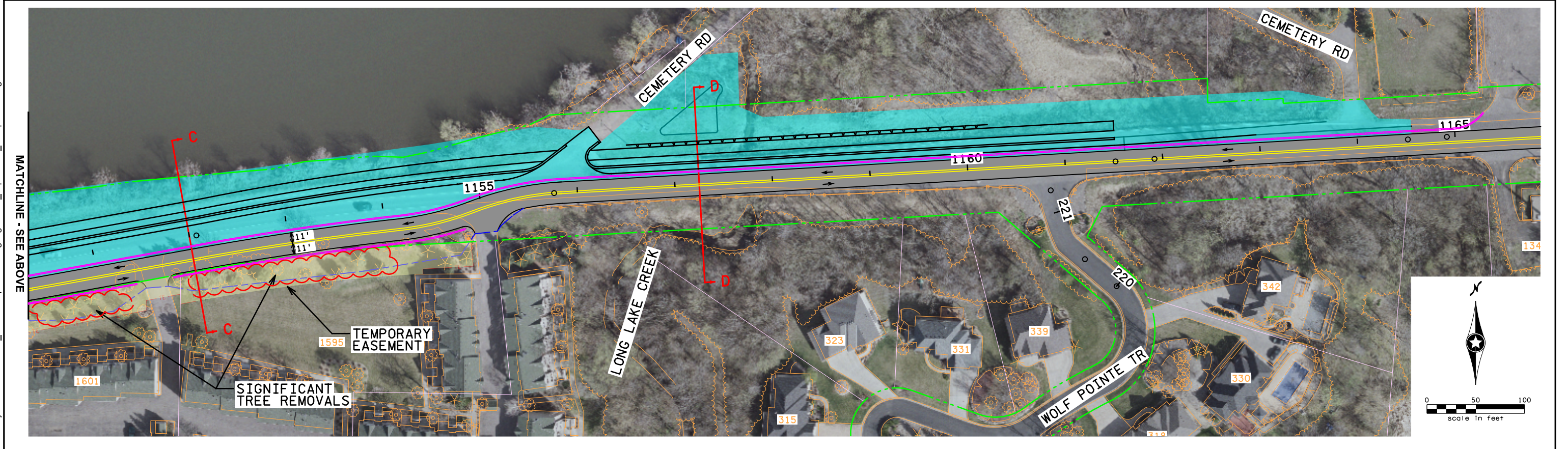
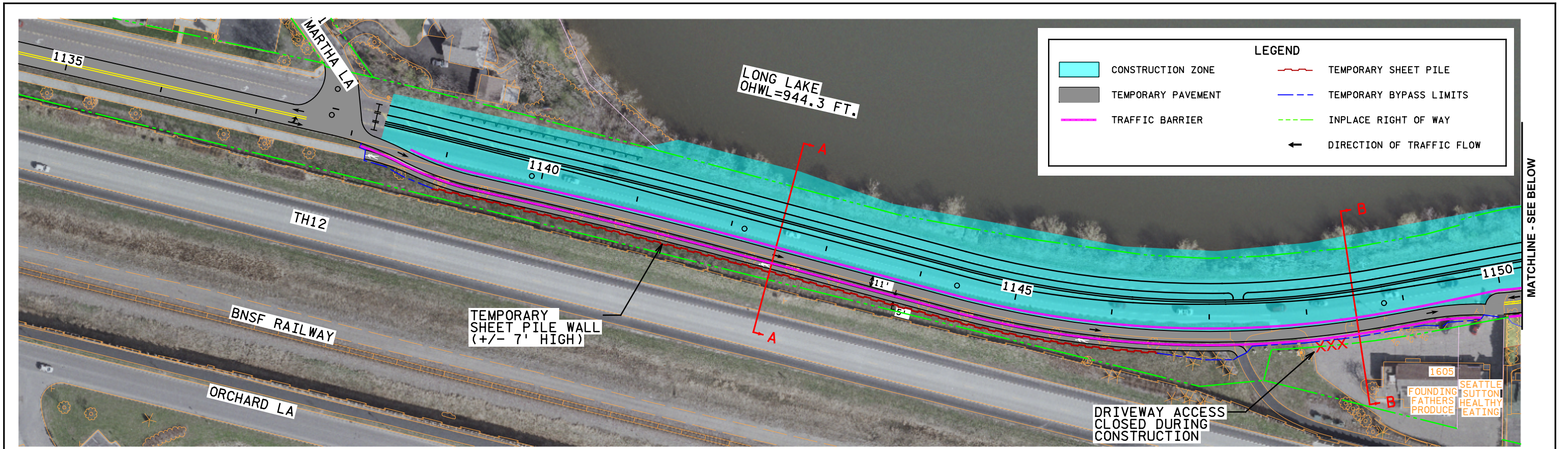
CSAH 112 - Phase 1  
Hennepin County

Job #  
8/10/2015

**PRELIMINARY  
SUBJECT TO CHANGE  
8/12/15**

Figure 3B





H:\Projects\8483\CAD\_BIM\Graphics\Staging\8483\_Option 4\_Graphic A.dgn

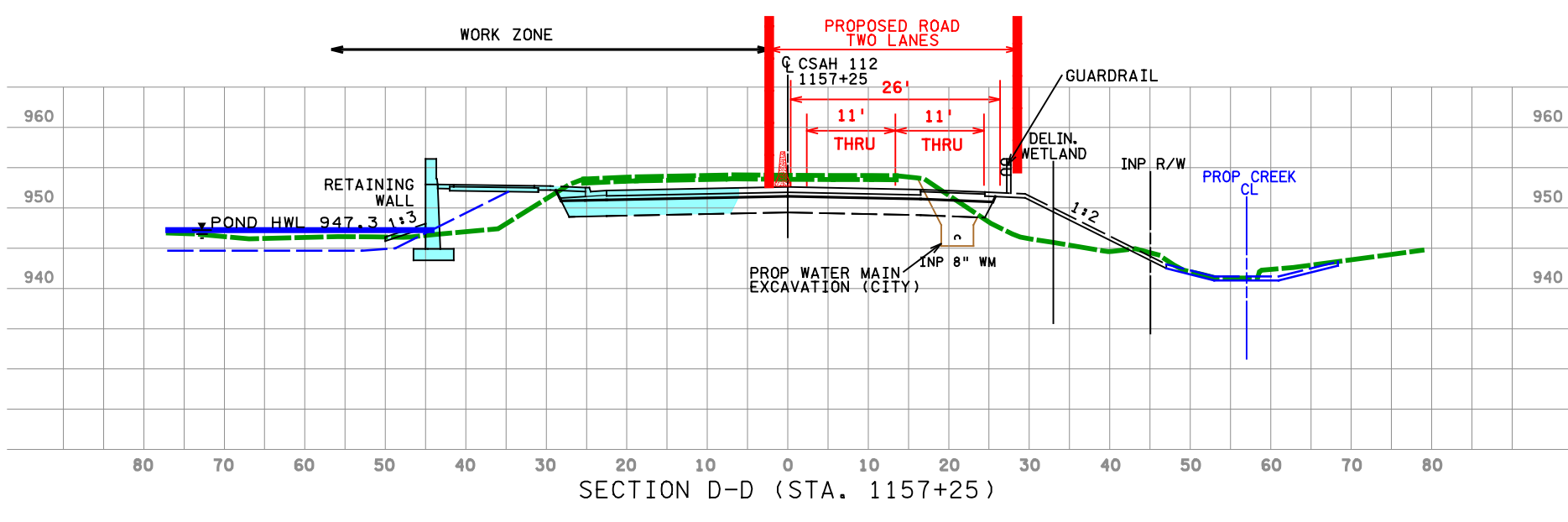
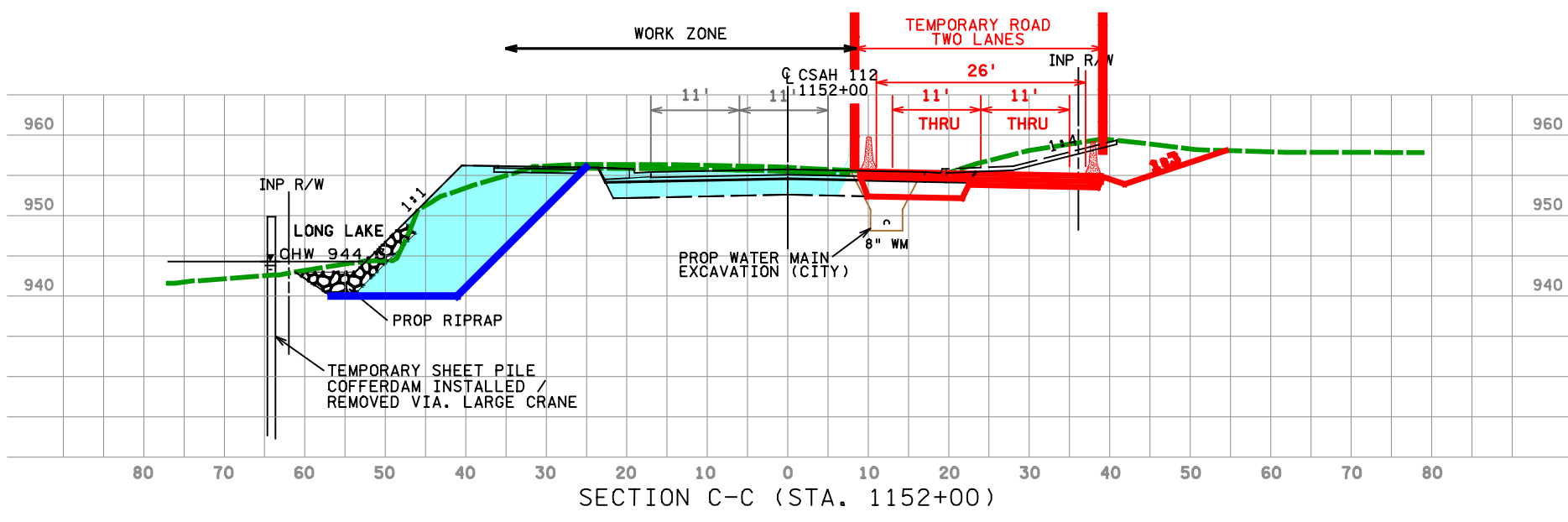
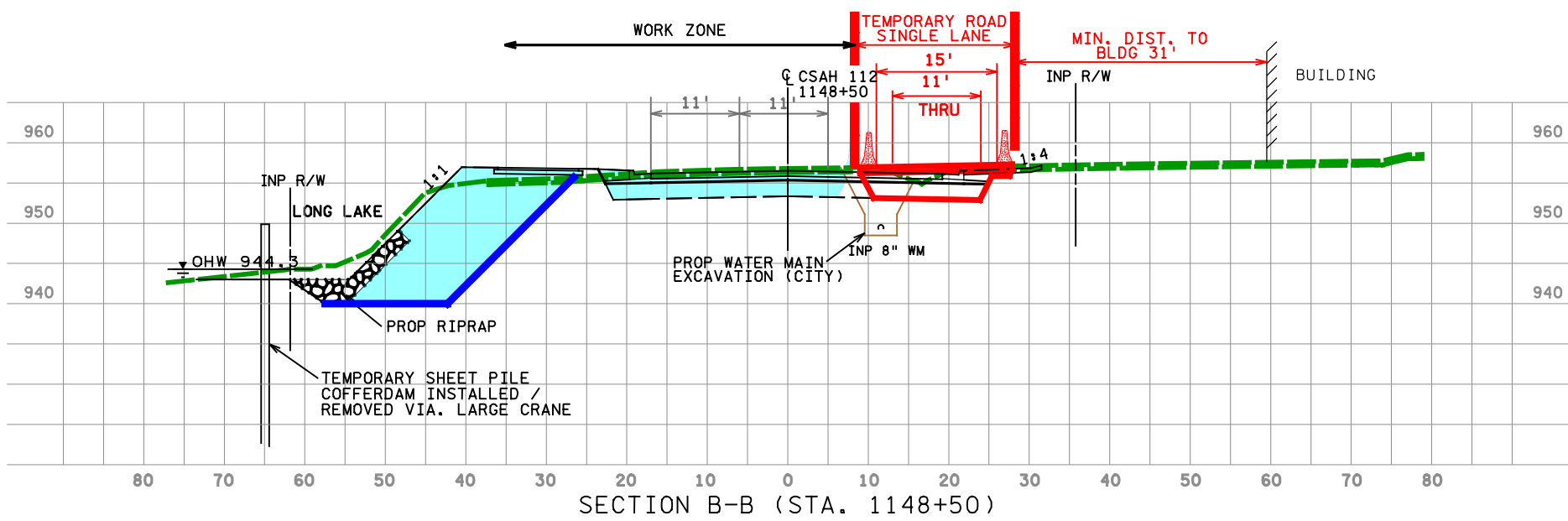
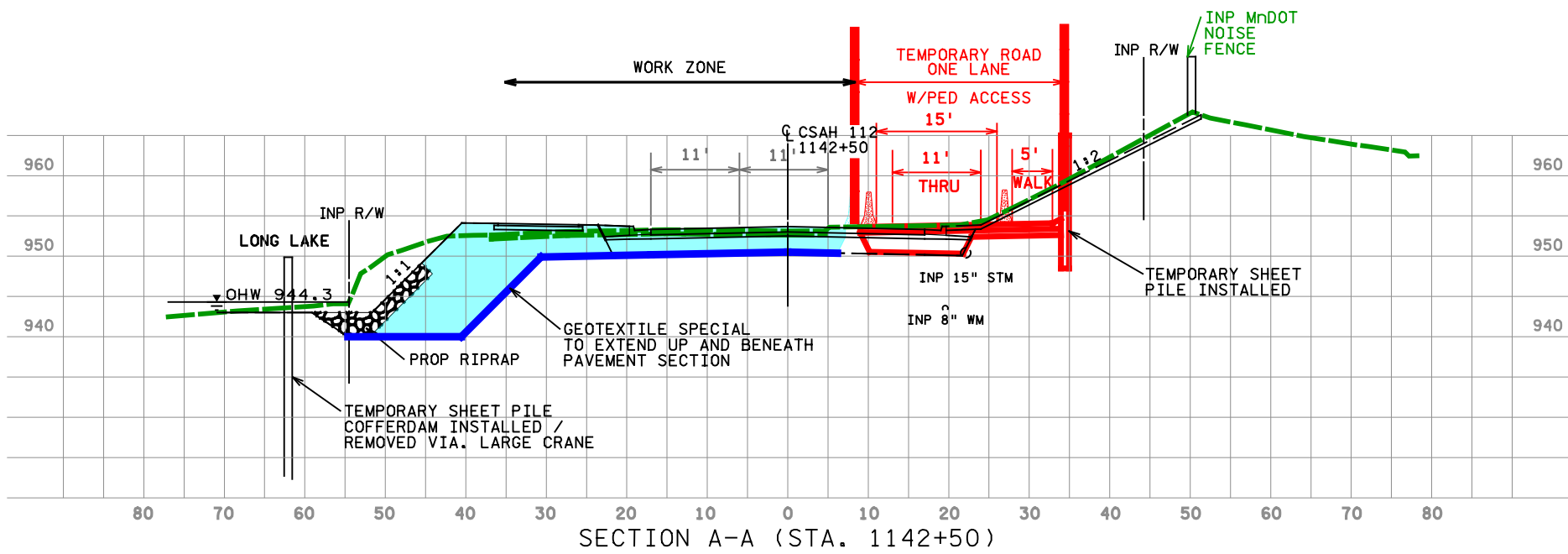
MATCHLINE - SEE ABOVE

MATCHLINE - SEE BELOW

**PRELIMINARY**  
**SUBJECT TO CHANGE**  
 8/12/15

Figure 4A





H:\Projects\18483\CAD\_BIM\Graphics\Staging\18483\_Option 4\_Cross Section\_Graphic B.dgn



**Temporary Bypass Option 4 - Cross Sections**

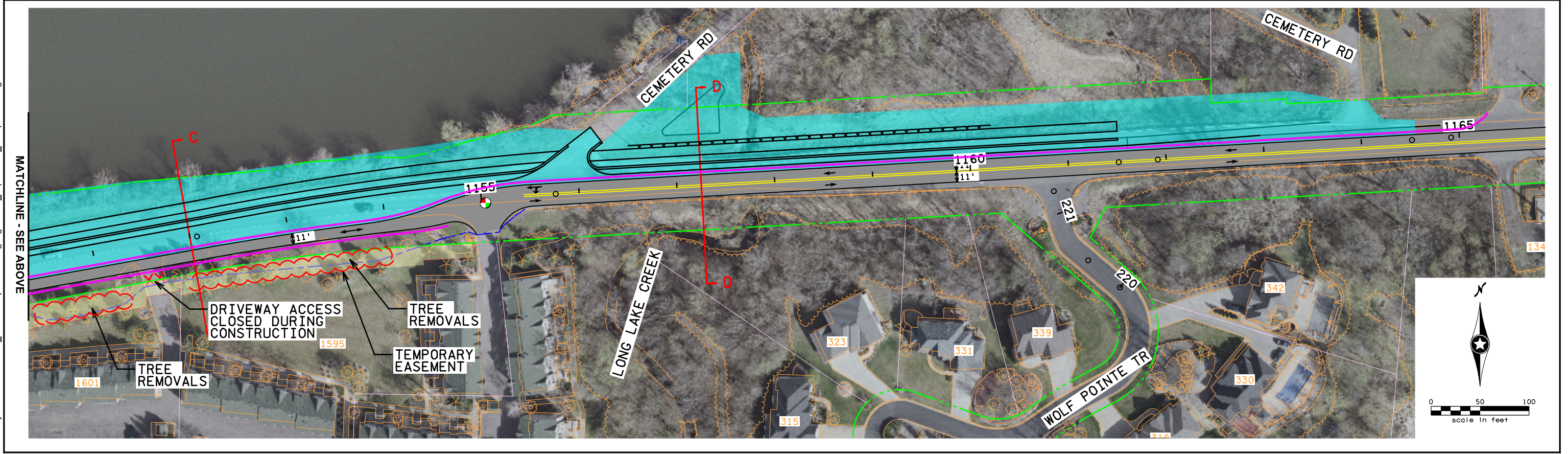
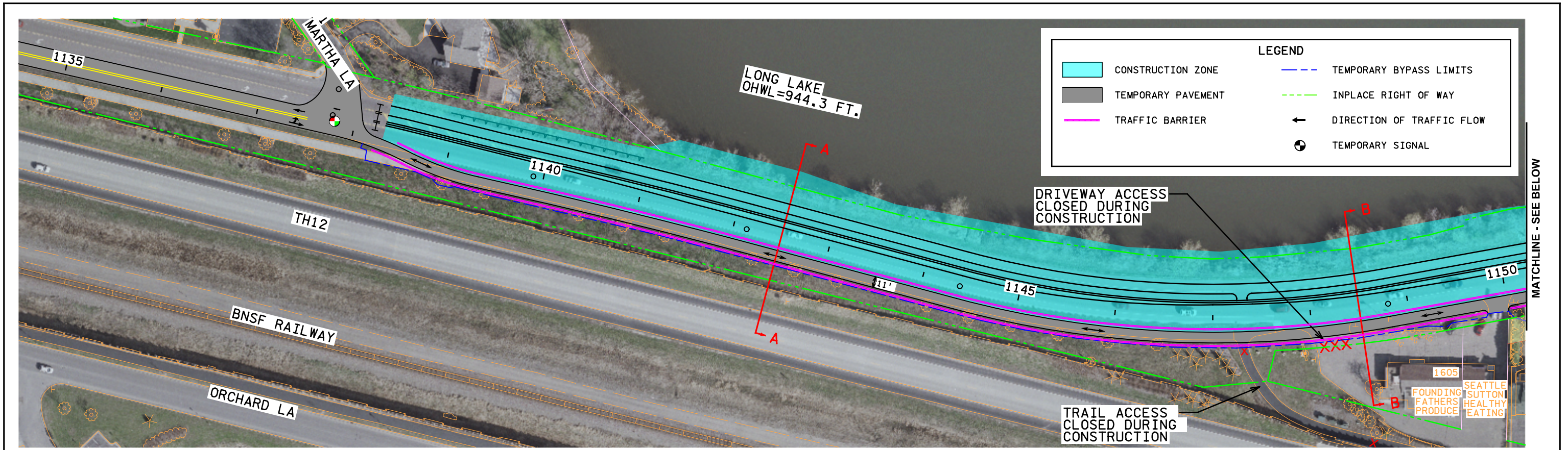
CSAH 112 - Phase 1  
Hennepin County

Job #  
8/10/2015

**PRELIMINARY  
SUBJECT TO CHANGE  
8/12/15**

Figure 4B



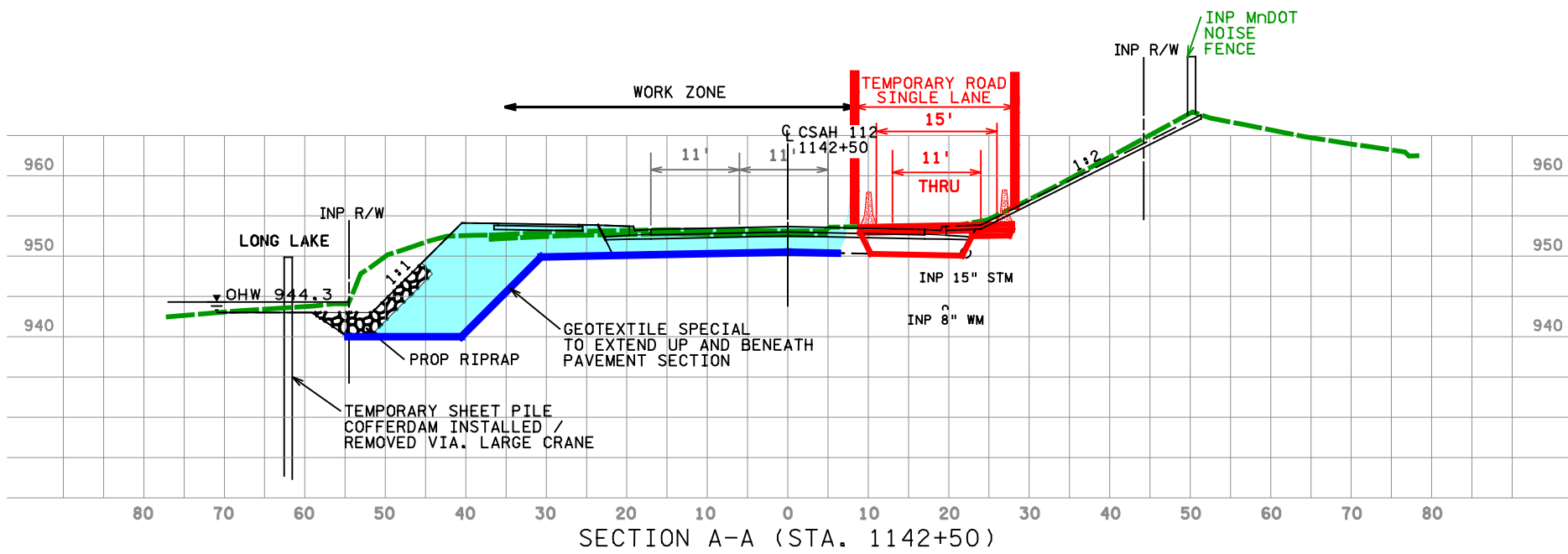


H:\Projects\8483\CAD\_BIM\Graphics\Staging\8483\_Option 5\_Graphic A.dgn

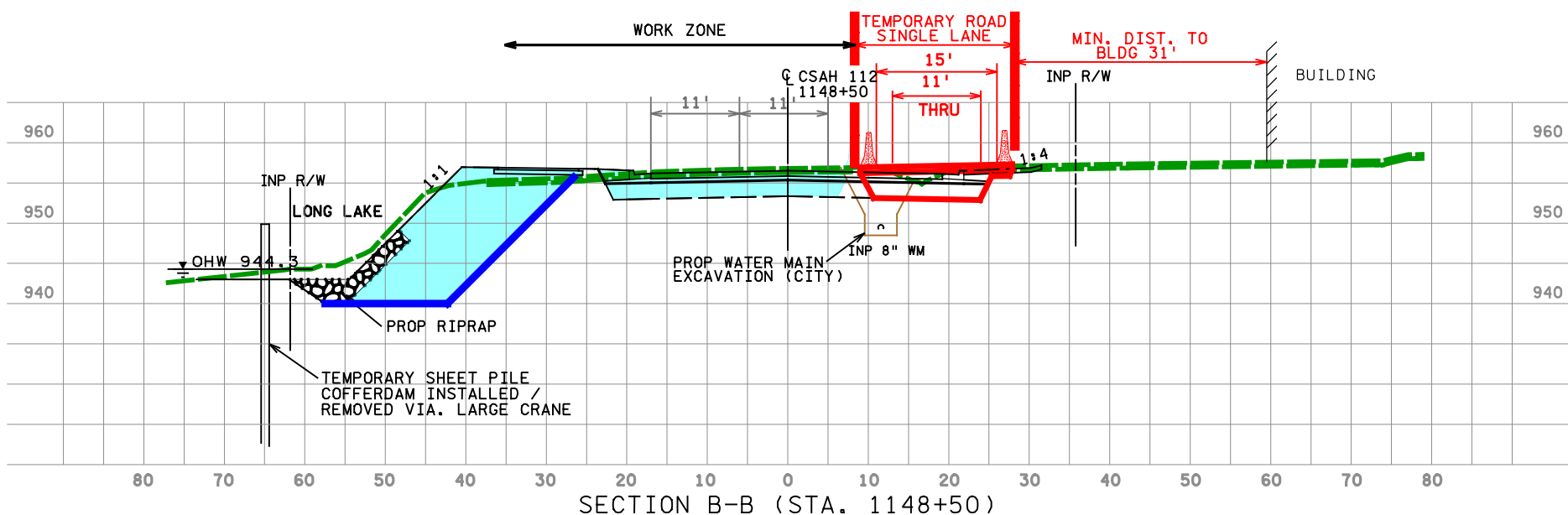
**PRELIMINARY**  
**SUBJECT TO CHANGE**  
 8/12/15

Figure 5A

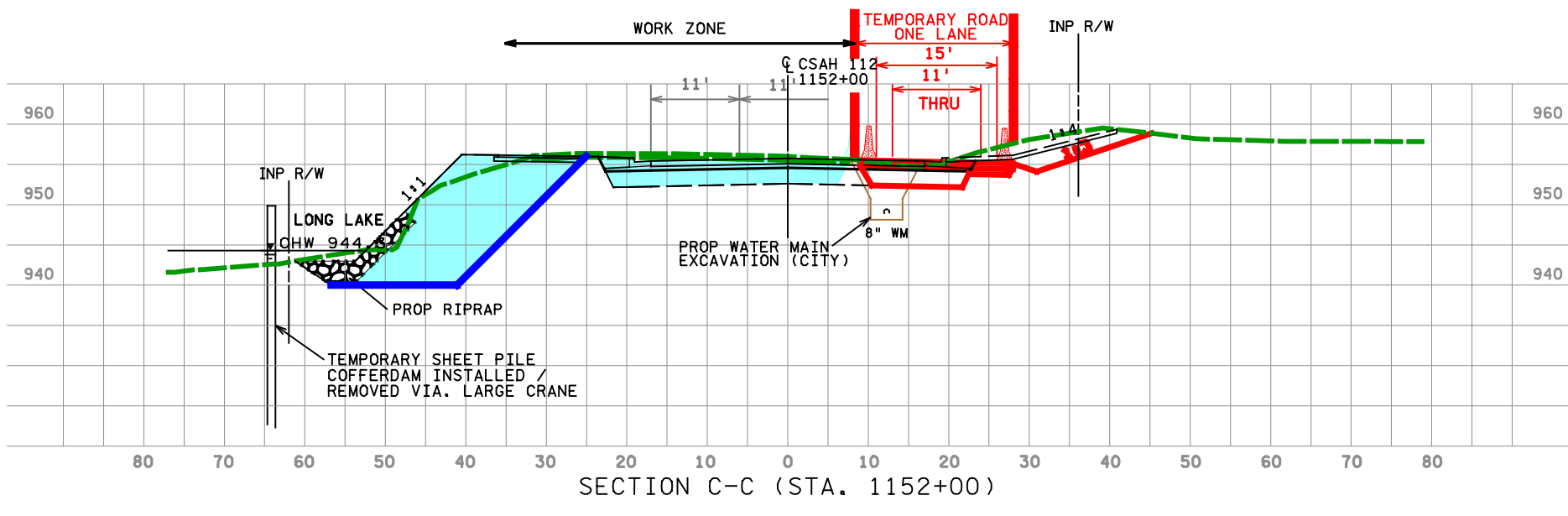




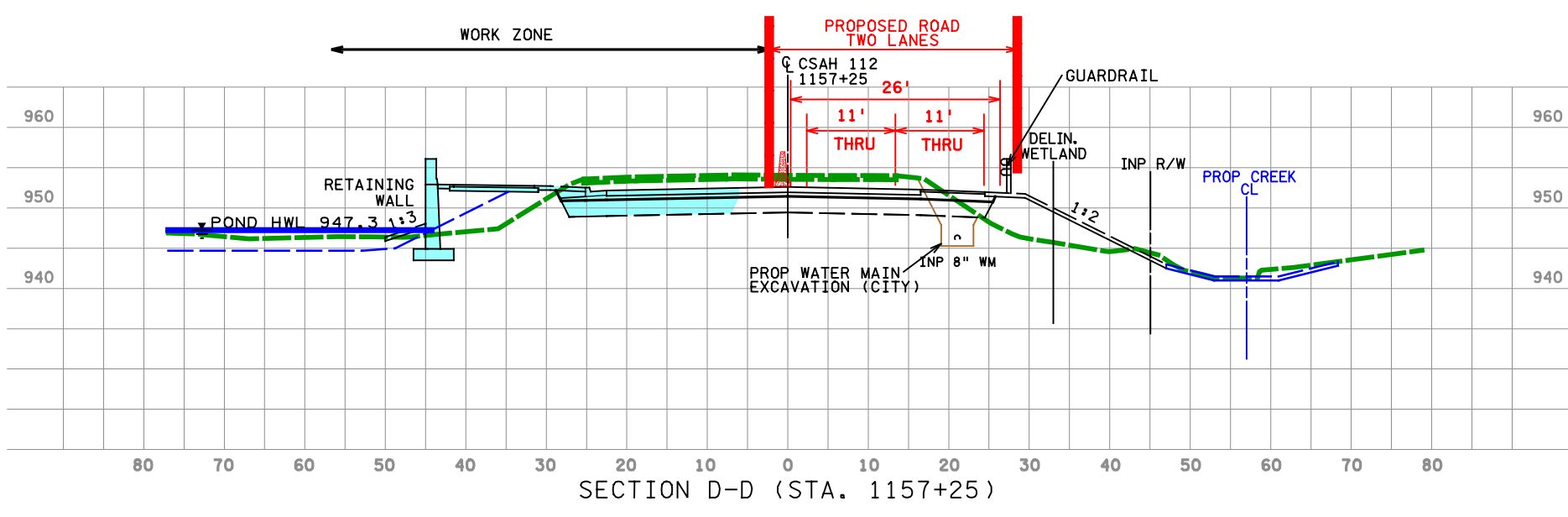
SECTION A-A (STA. 1142+50)



SECTION B-B (STA. 1148+50)



SECTION C-C (STA. 1152+00)



SECTION D-D (STA. 1157+25)

H:\Projects\18483\CAD\_BIM\Graphics\Staging\18483\_Option 5\_Cross Section\_Graphic B.dgn



**Temporary Bypass Option 5 - Cross Sections**

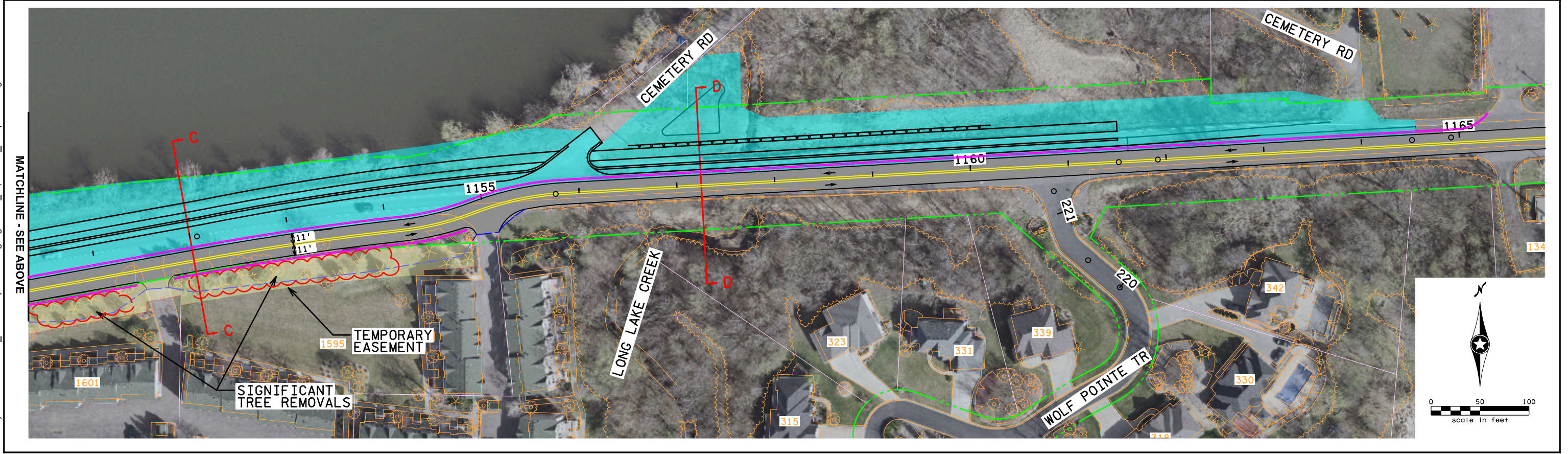
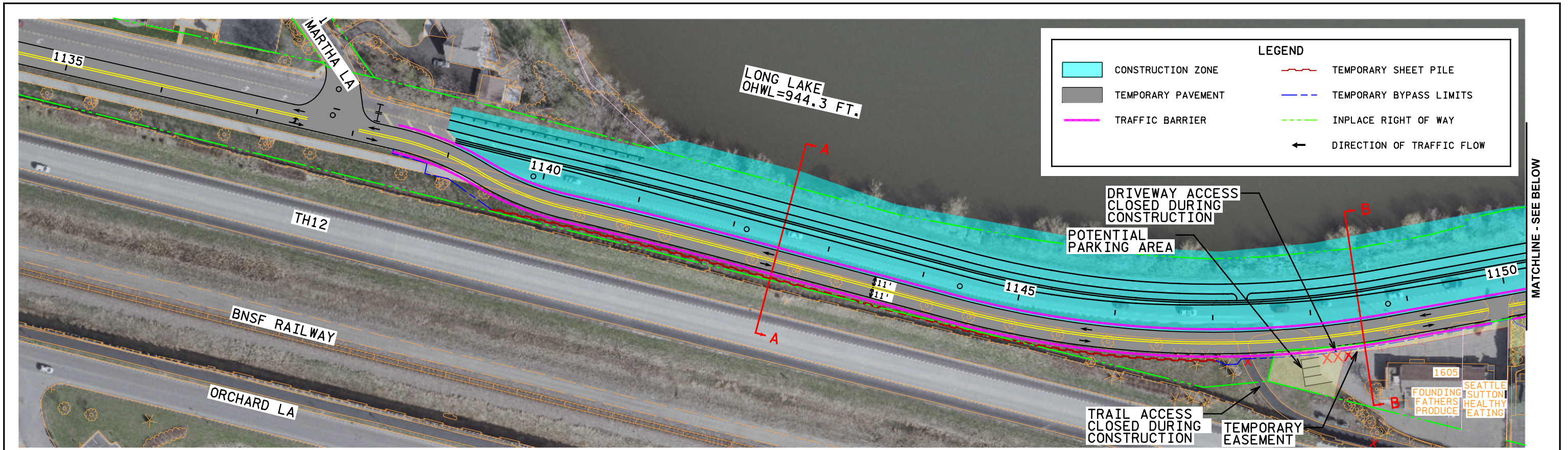
CSAH 112 - Phase 1  
Hennepin County

Job #  
8/10/2015

**PRELIMINARY  
SUBJECT TO CHANGE  
8/12/15**

Figure 5B





H:\Projects\8483\CAD\_BIM\Graphics\Staging\8483\_Option 6\_Graphic A.dgn

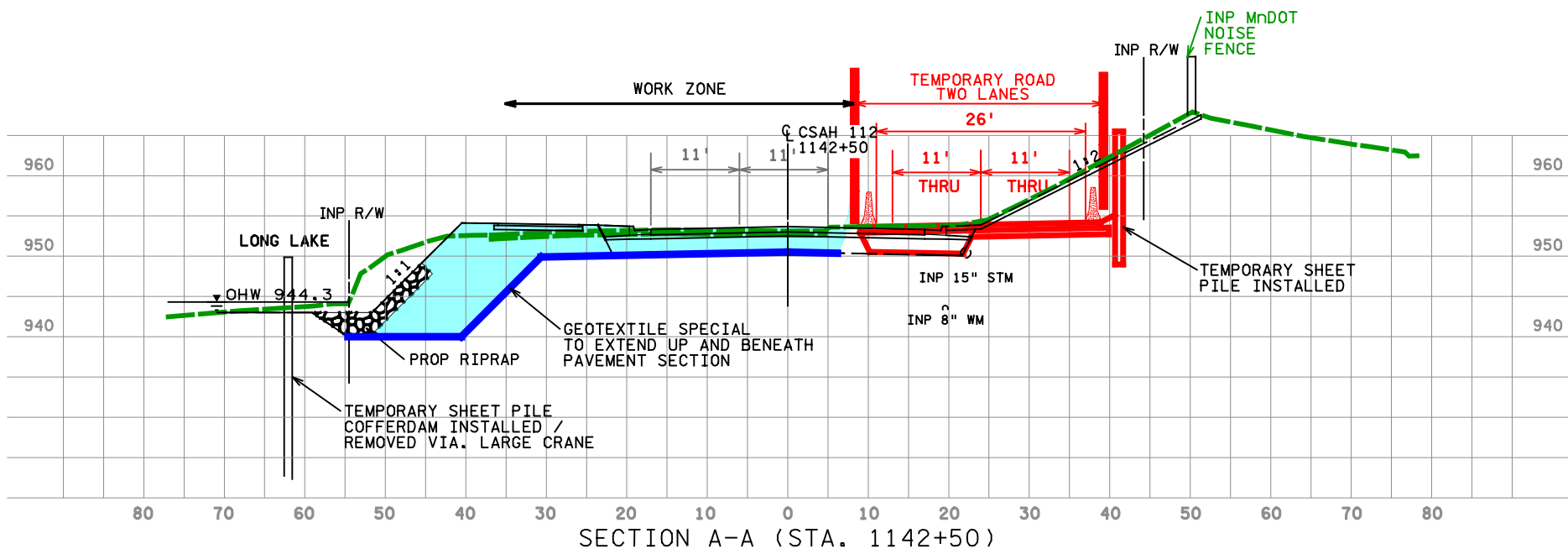
MATCHLINE - SEE ABOVE

MATCHLINE - SEE BELOW

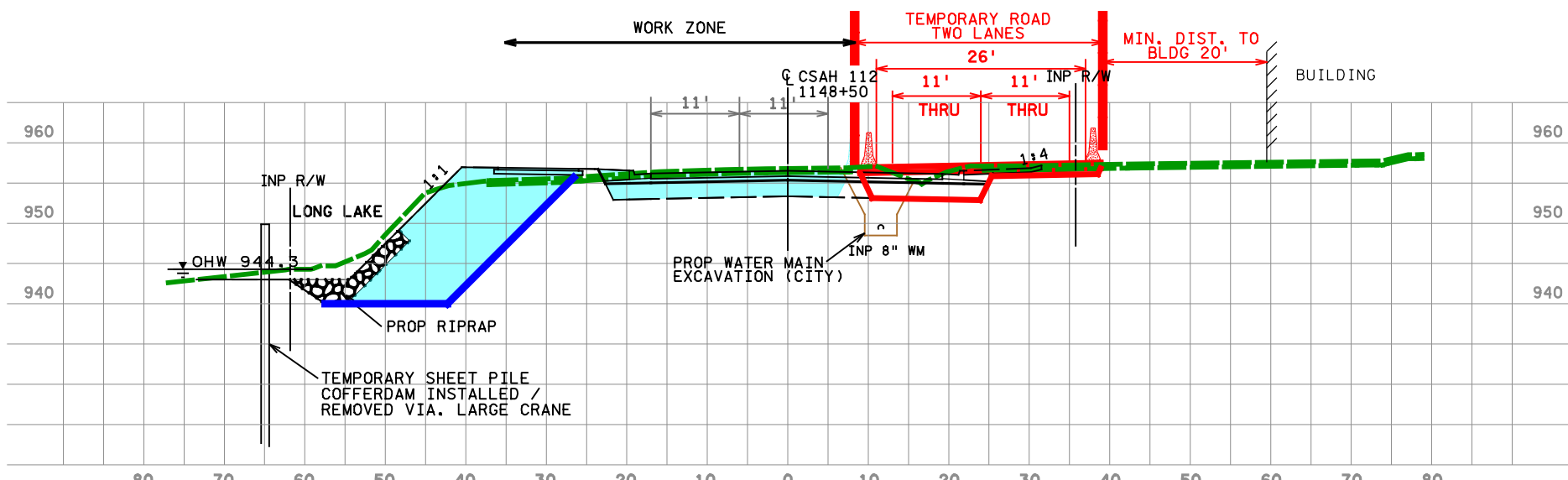
**PRELIMINARY**  
**SUBJECT TO CHANGE**  
 8/12/15

Figure 6A

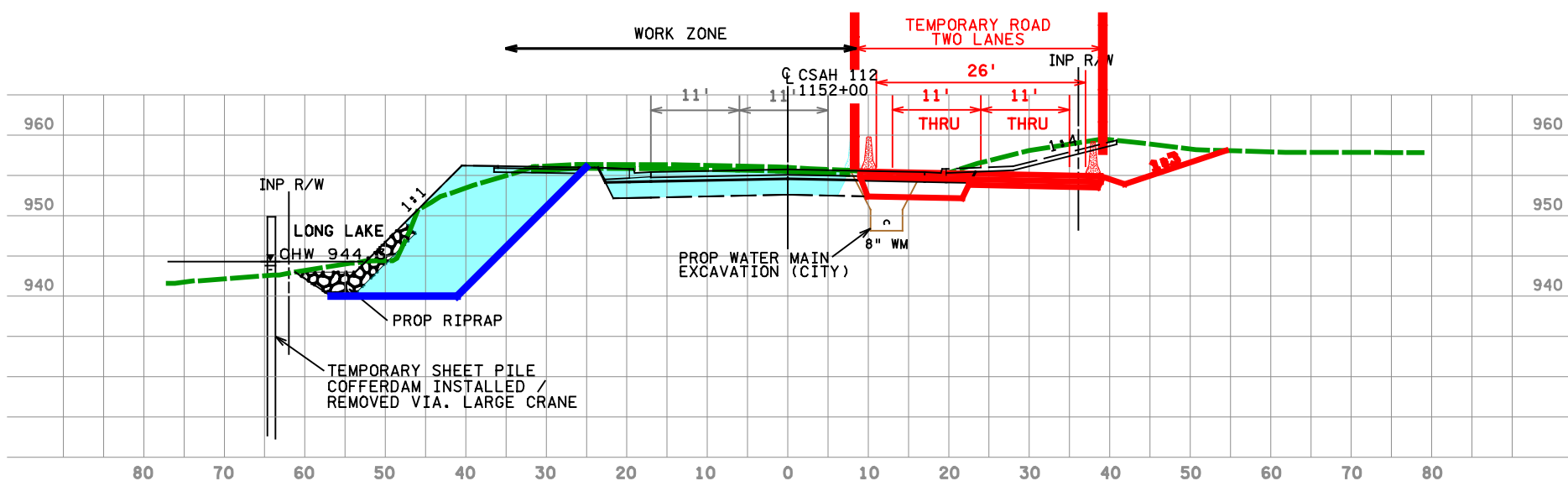




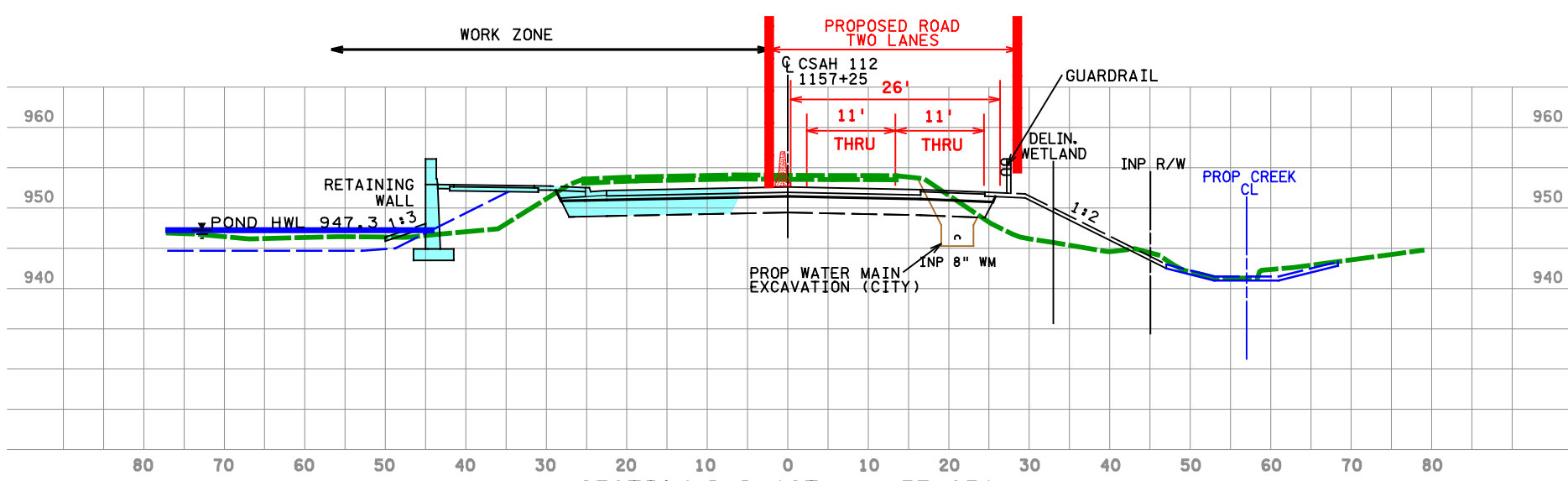
SECTION A-A (STA. 1142+50)



SECTION B-B (STA. 1148+50)



SECTION C-C (STA. 1152+00)



SECTION D-D (STA. 1157+25)

H:\Projects\18483\CAD\_BIM\Graphics\Staging\18483\_Option 6\_Cross Section\_Graphic B.dgn



**Temporary Bypass Option 6 - Cross Sections**

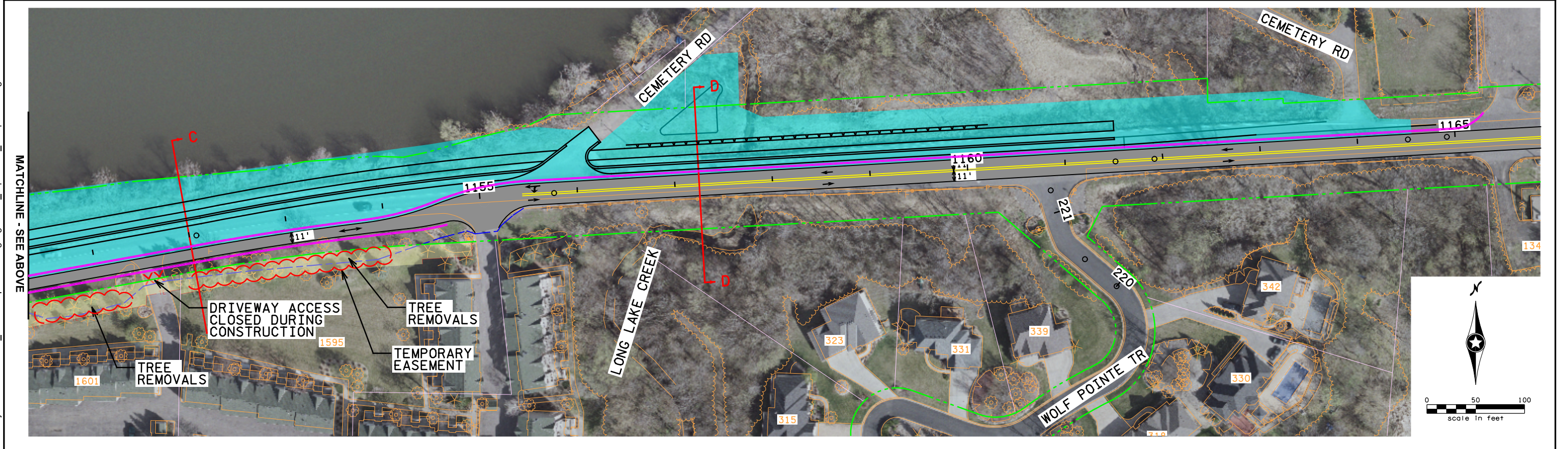
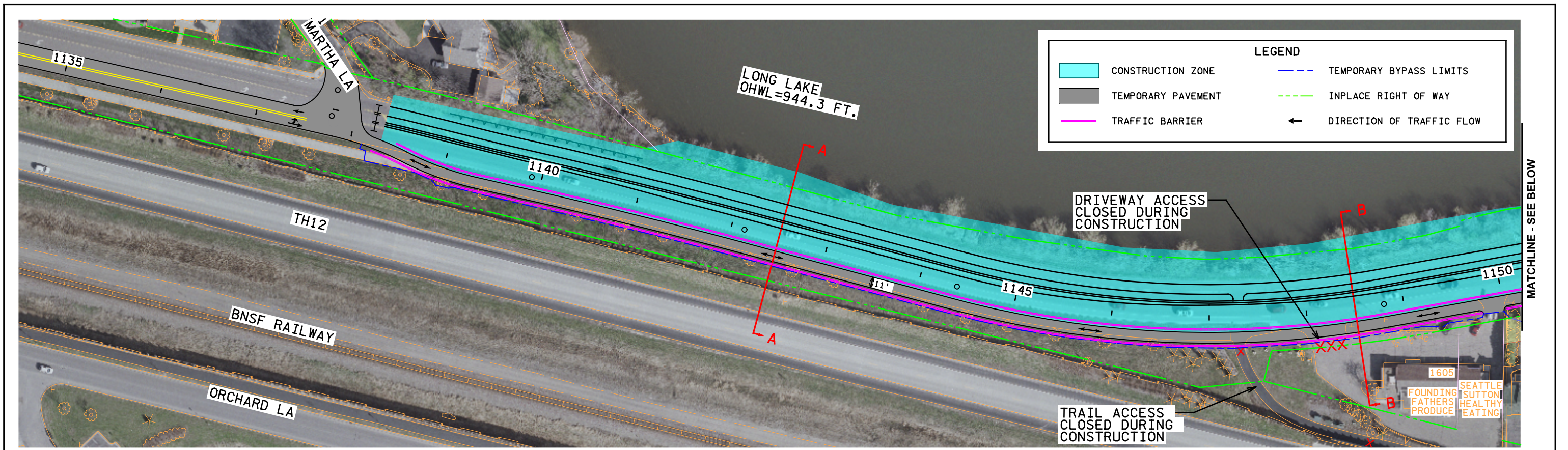
CSAH 112 - Phase 1  
Hennepin County

Job #  
8/10/2015

**PRELIMINARY  
SUBJECT TO CHANGE  
8/12/15**

Figure 6B





H:\Projects\8483\CAD\_BIM\Graphics\Staging\8483\_Option 7\_Graphic A.dgn

**SRF** Temporary Bypass Option 7 - Single Lane (Eastbound AM/Westbound PM)

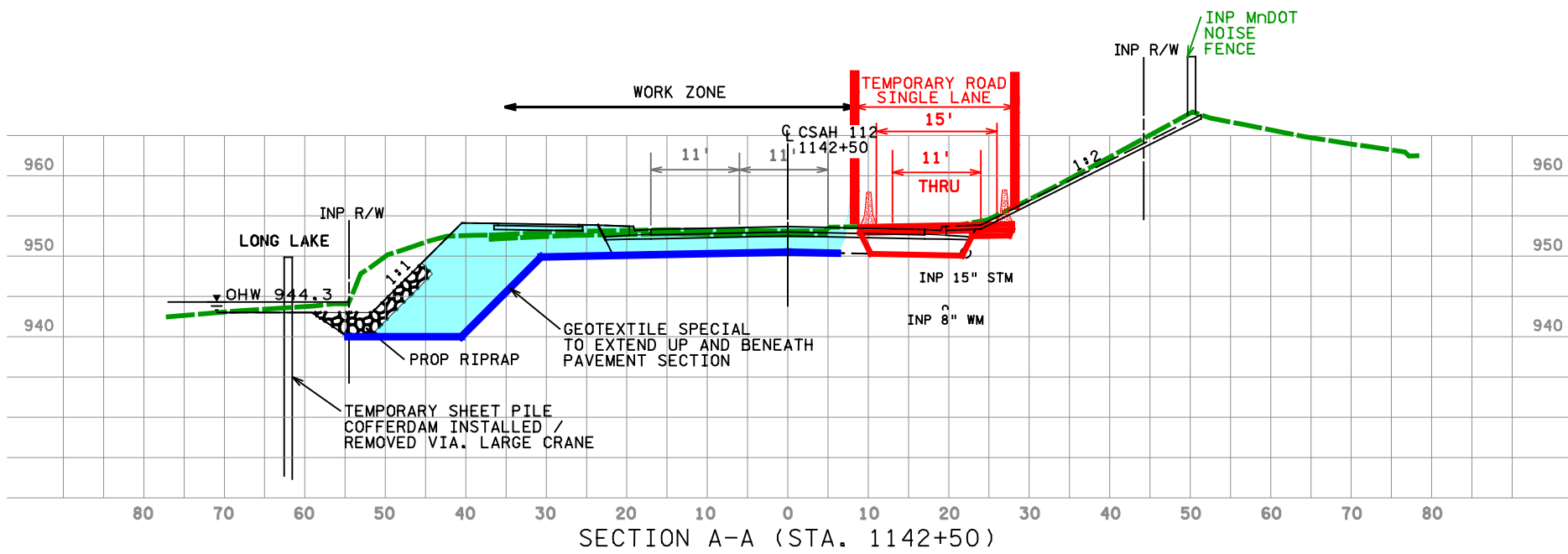
Consulting Group, Inc. CSAH 112 - Phase 1  
Hennepin County

Job #  
8/10/2015

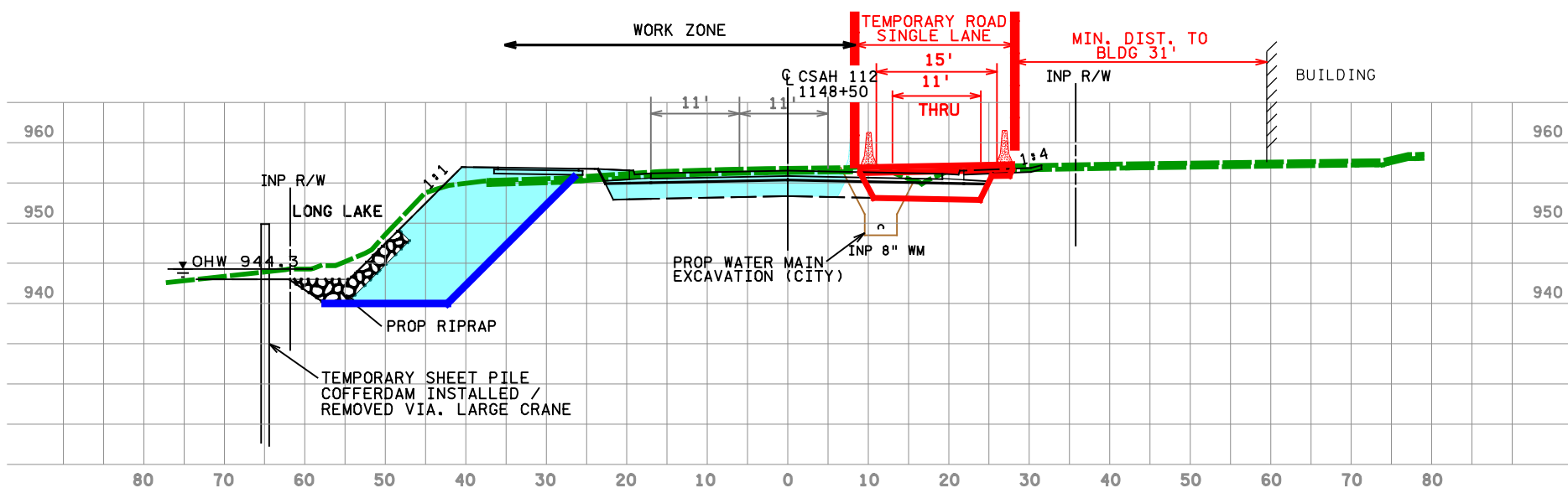
**PRELIMINARY**  
**SUBJECT TO CHANGE**  
8/12/15

Figure 7A

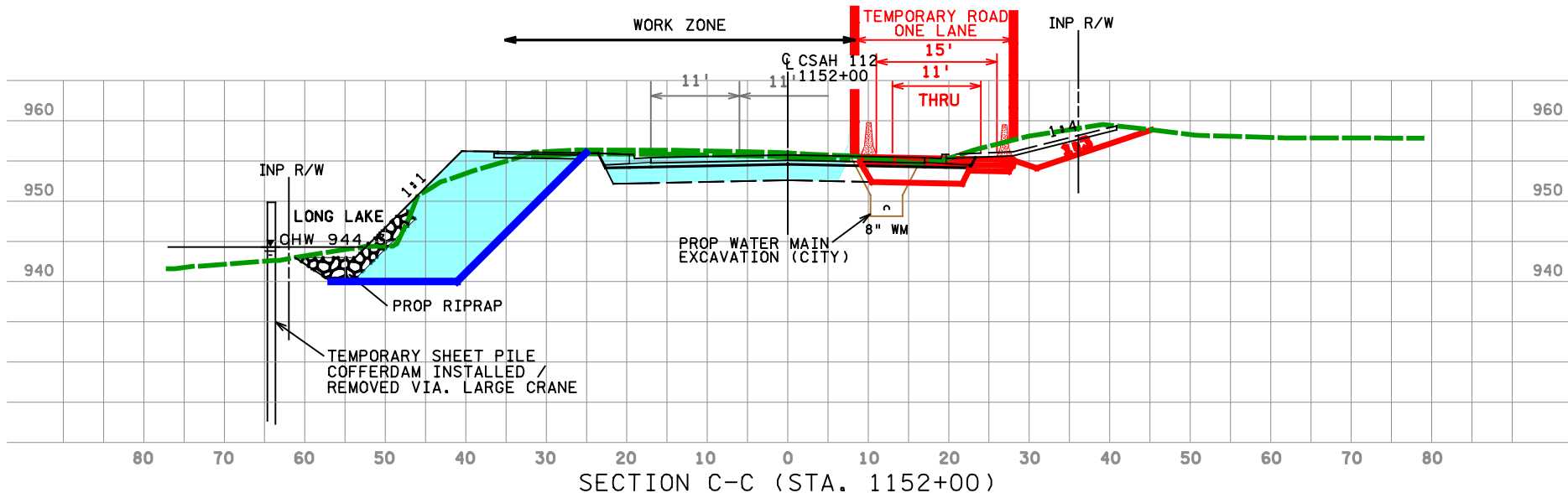




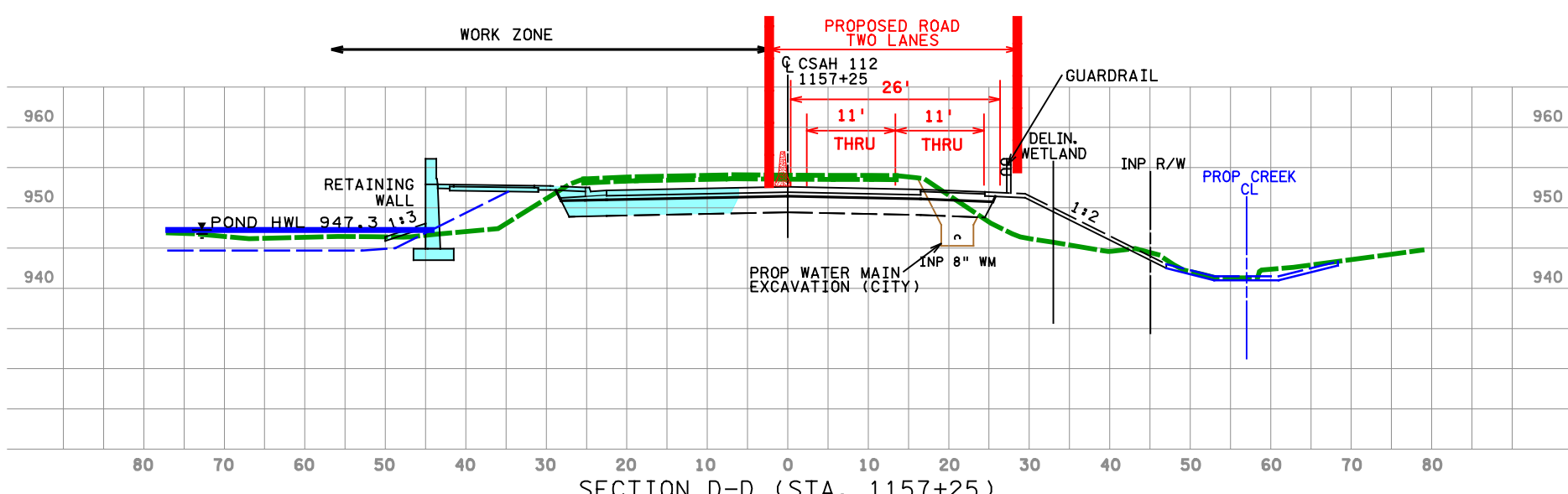
SECTION A-A (STA. 1142+50)



SECTION B-B (STA. 1148+50)



SECTION C-C (STA. 1152+00)



SECTION D-D (STA. 1157+25)

H:\Projects\18483\CAD\_BIM\Graphics\Staging\18483\_Option 7\_Cross Section\_Graphic B.dgn



**Temporary Bypass Option 7 - Cross Sections**

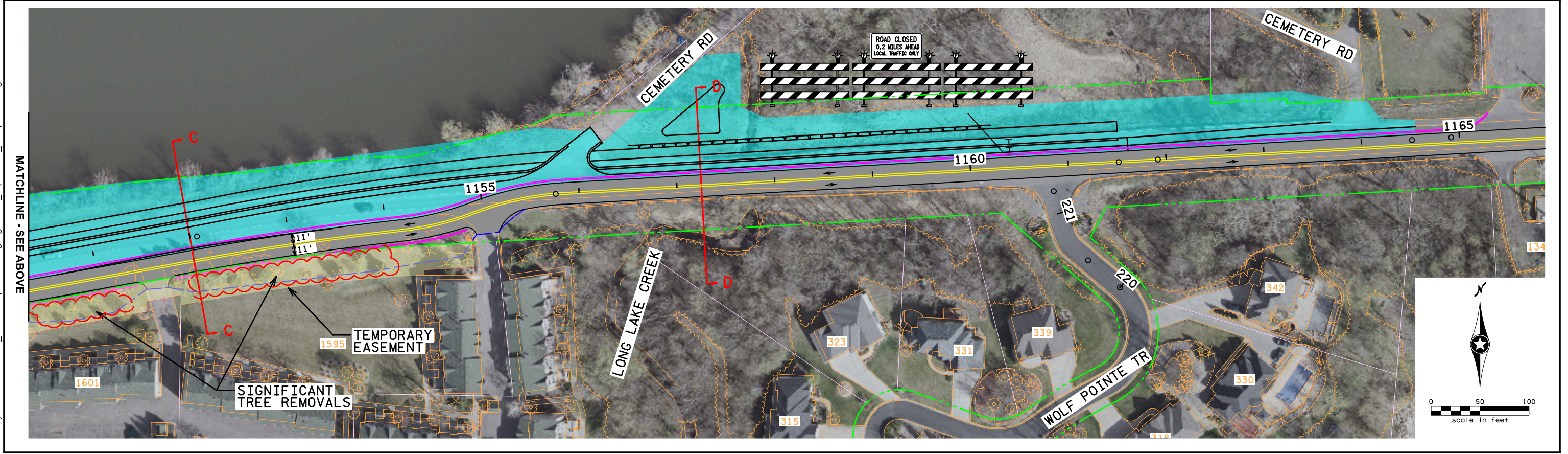
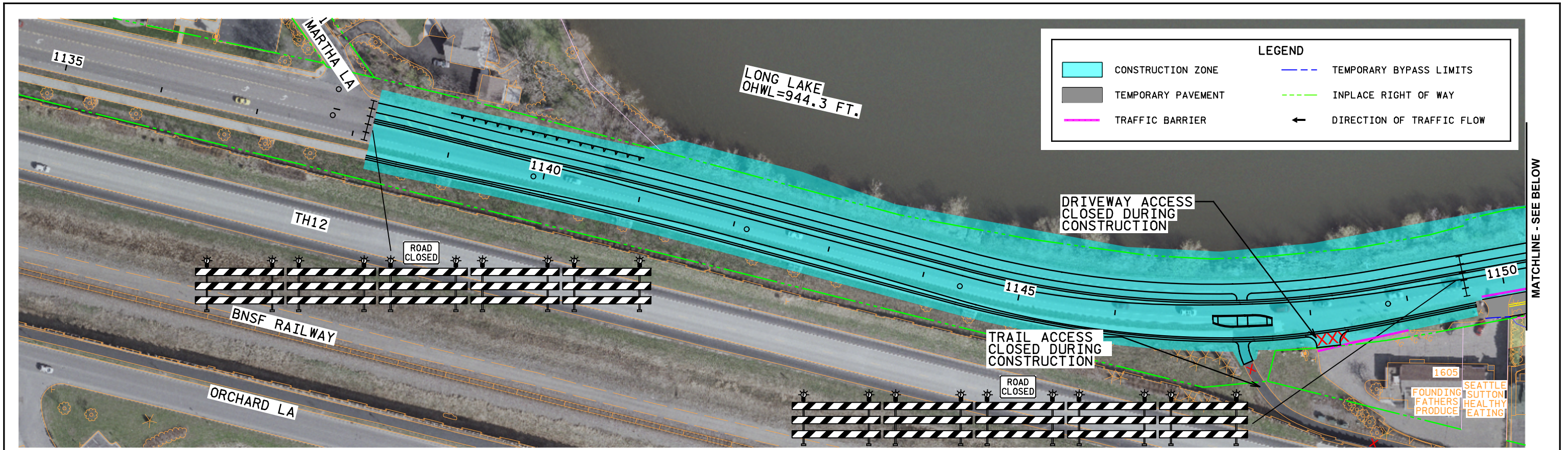
CSAH 112 - Phase 1  
Hennepin County

Job #  
8/10/2015

**PRELIMINARY  
SUBJECT TO CHANGE  
8/12/15**

Figure 7B





H:\Projects\8483\CAD\_BIM\Graphics\Staging\8483\_Option 8\_Graphic A.dgn

MATCHLINE - SEE ABOVE

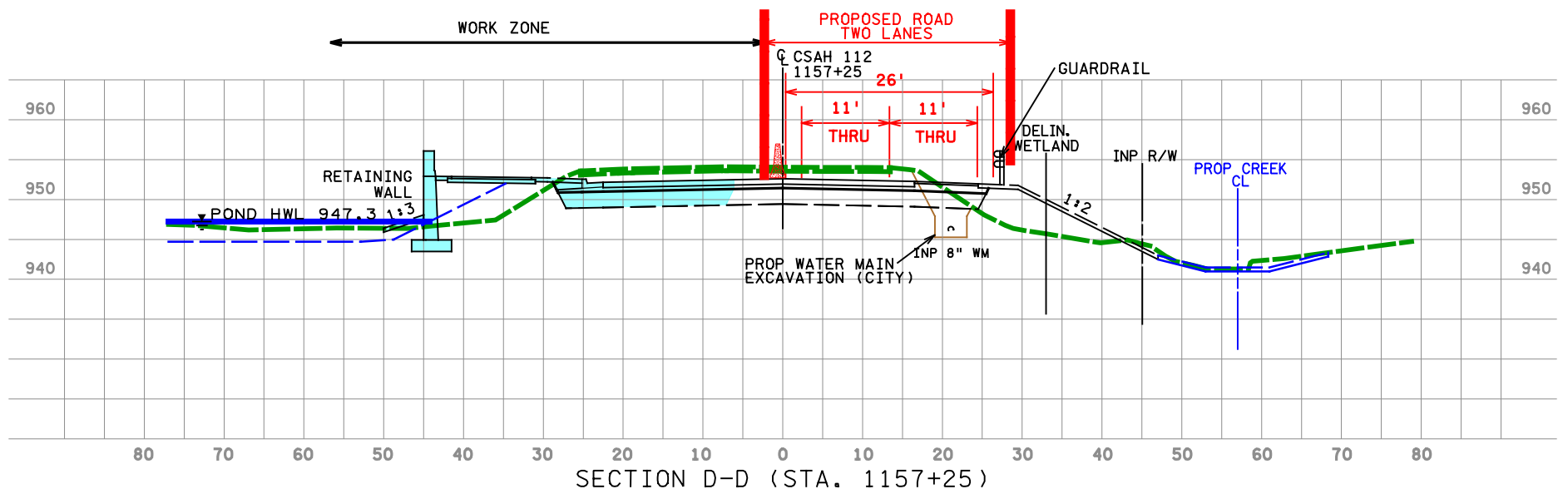
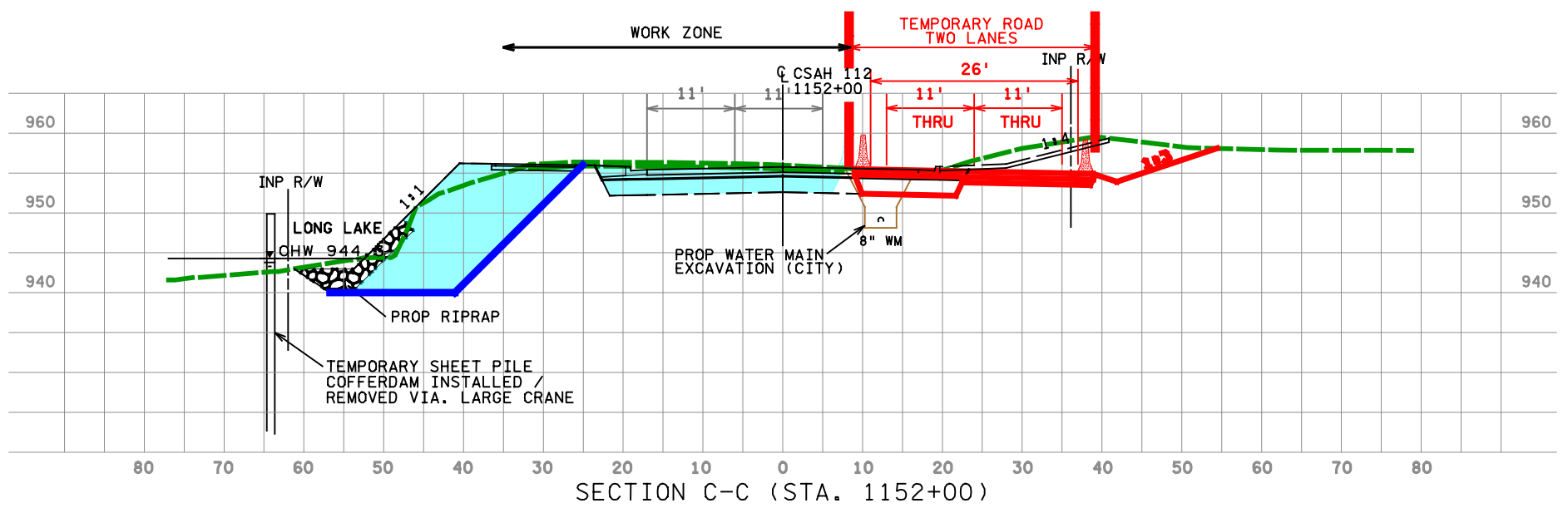
MATCHLINE - SEE BELOW

**PRELIMINARY**  
**SUBJECT TO CHANGE**  
 8/12/15

Figure 8A



H:\Projects\18483\CAD\_BIM\Graphics\Staging\18483\_Option 8\_Cross Section\_Graphic B.dgn



### Temporary Bypass Option 8 - Cross Sections

CSAH 112 - Phase 1  
Hennepin County

Job #  
8/10/2015

**PRELIMINARY**  
**SUBJECT TO CHANGE**  
8/12/15

Figure 8B