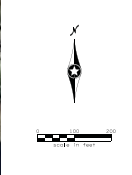


# COUNTY ROAD 112 STAGE 1



**LEGEND**

- PERMANENT CONSTRUCTION THIS STAGE
- TEMPORARY BYPASS
- CONSTRUCT UNDER TRAFFIC
- DRIVEWAY CLOSED DURING CONSTRUCTION
- DIRECTION OF TRAFFIC
- TEMPORARY SIGNAL

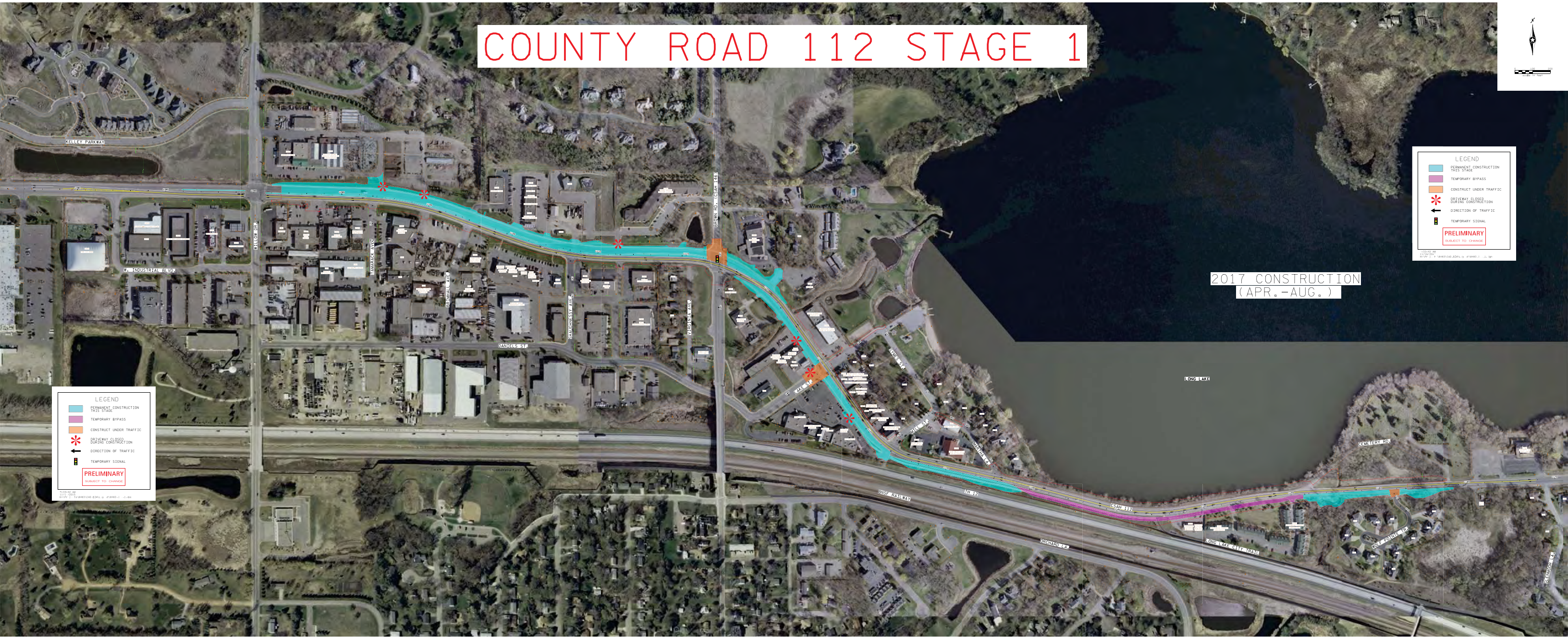
**PRELIMINARY**  
SUBJECT TO CHANGE

2017 CONSTRUCTION  
(APR. - AUG.)

**LEGEND**

- PERMANENT CONSTRUCTION THIS STAGE
- TEMPORARY BYPASS
- CONSTRUCT UNDER TRAFFIC
- DRIVEWAY CLOSED DURING CONSTRUCTION
- DIRECTION OF TRAFFIC
- TEMPORARY SIGNAL

**PRELIMINARY**  
SUBJECT TO CHANGE



# COUNTY ROAD 112 STAGE 2



2017 CONSTRUCTION  
(SEPT.-NOV.)

2017 CONSTRUCTION  
(OCT.-NOV.)

2017 CONSTRUCTION  
(AUG.-NOV.)  
2018 CONSTRUCTION  
(APRIL-JUNE)

2017 CONSTRUCTION  
(AUG.-NOV.)

2017 CONSTRUCTION  
(AUG.)

2017 CONSTRUCTION  
(AUG.-NOV.)  
2018 CONSTRUCTION  
(APRIL-JUNE)

**LEGEND**

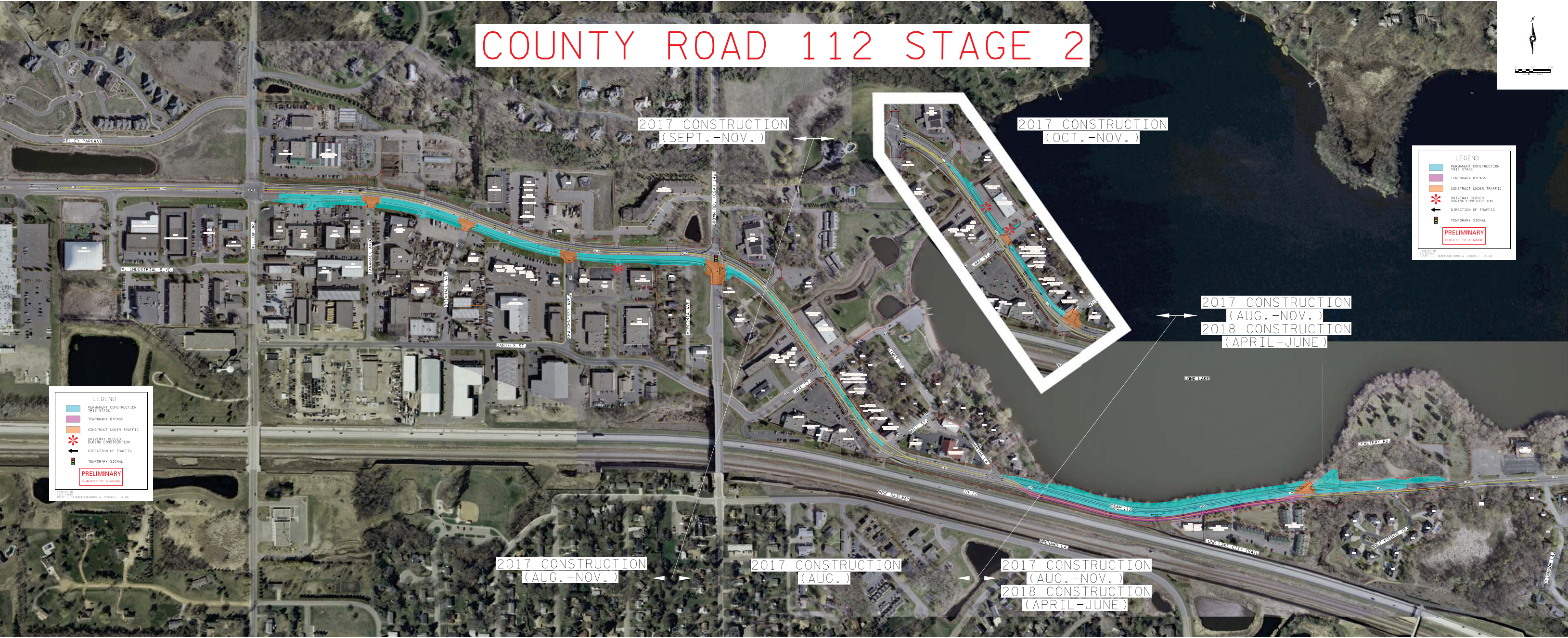
- PERMANENT CONSTRUCTION THIS STAGE
- TEMPORARY BYPASS
- CONSTRUCT UNDER TRAFFIC
- DELAYED CLOSURE DURING CONSTRUCTION
- DIRECTION OF TRAFFIC
- TEMPORARY SIGNAL

**PRELIMINARY**  
SUBJECT TO CHANGE

**LEGEND**

- PERMANENT CONSTRUCTION THIS STAGE
- TEMPORARY BYPASS
- CONSTRUCT UNDER TRAFFIC
- DELAYED CLOSURE DURING CONSTRUCTION
- DIRECTION OF TRAFFIC
- TEMPORARY SIGNAL

**PRELIMINARY**  
SUBJECT TO CHANGE



# COUNTY ROAD 112 STAGE 3



**LEGEND**

- PERMANENT CONSTRUCTION THIS STAGE
- TEMPORARY BYPASS
- CONSTRUCT UNDER TRAFFIC
- DRIVEWAY CLOSED DURING CONSTRUCTION
- DIRECTION OF TRAFFIC
- TEMPORARY SIGNAL

**PRELIMINARY**  
SUBJECT TO CHANGE

**LEGEND**

- PERMANENT CONSTRUCTION THIS STAGE
- TEMPORARY BYPASS
- CONSTRUCT UNDER TRAFFIC
- DRIVEWAY CLOSED DURING CONSTRUCTION
- DIRECTION OF TRAFFIC
- TEMPORARY SIGNAL

**PRELIMINARY**  
SUBJECT TO CHANGE

2018 CONSTRUCTION  
(JUNE-SEPT.)

COMPLETE  
NOVEMBER 2017

COMPLETE  
NOVEMBER 2017

