

Bottineau Community Works

METRO Blue Line Extension Planning for Community Connections

The Hennepin County Bottineau Community Works program has been collaborating with cities and community partners in the Bottineau Corridor where the METRO Blue Line Extension will run to maximize community benefits of Light Rail Transit. This project focused on infrastructure enhancements to improve connections for people walking, biking, and rolling near planned light rail stations in the cities of Golden Valley, Robbinsdale, Crystal and Brooklyn Park. The following is one of ten projects selected from more than 450 potential bicycle and pedestrian projects. Design plans for the final ten projects have been developed at the 60 percent engineering level, including identifying potential implementation challenges and funding needs that will need to be addressed to move forward.

Project A: 93rd Avenue North

City of Brooklyn Park



Shared-use path along 93rd Avenue North creates a link between the planned LRT station at 93rd Avenue North and Jefferson Highway/Central Avenue (Osseo's main street). At less than two miles, this shared-use path creates a convenient bicycle connection between downtown Osseo and the planned METRO Blue Line Extension. It will connect to existing facilities over Highway 169 and planned facilities connecting to West Broadway to be constructed by other agencies as part of the LRT project.

Facility Type:
Shared-use path

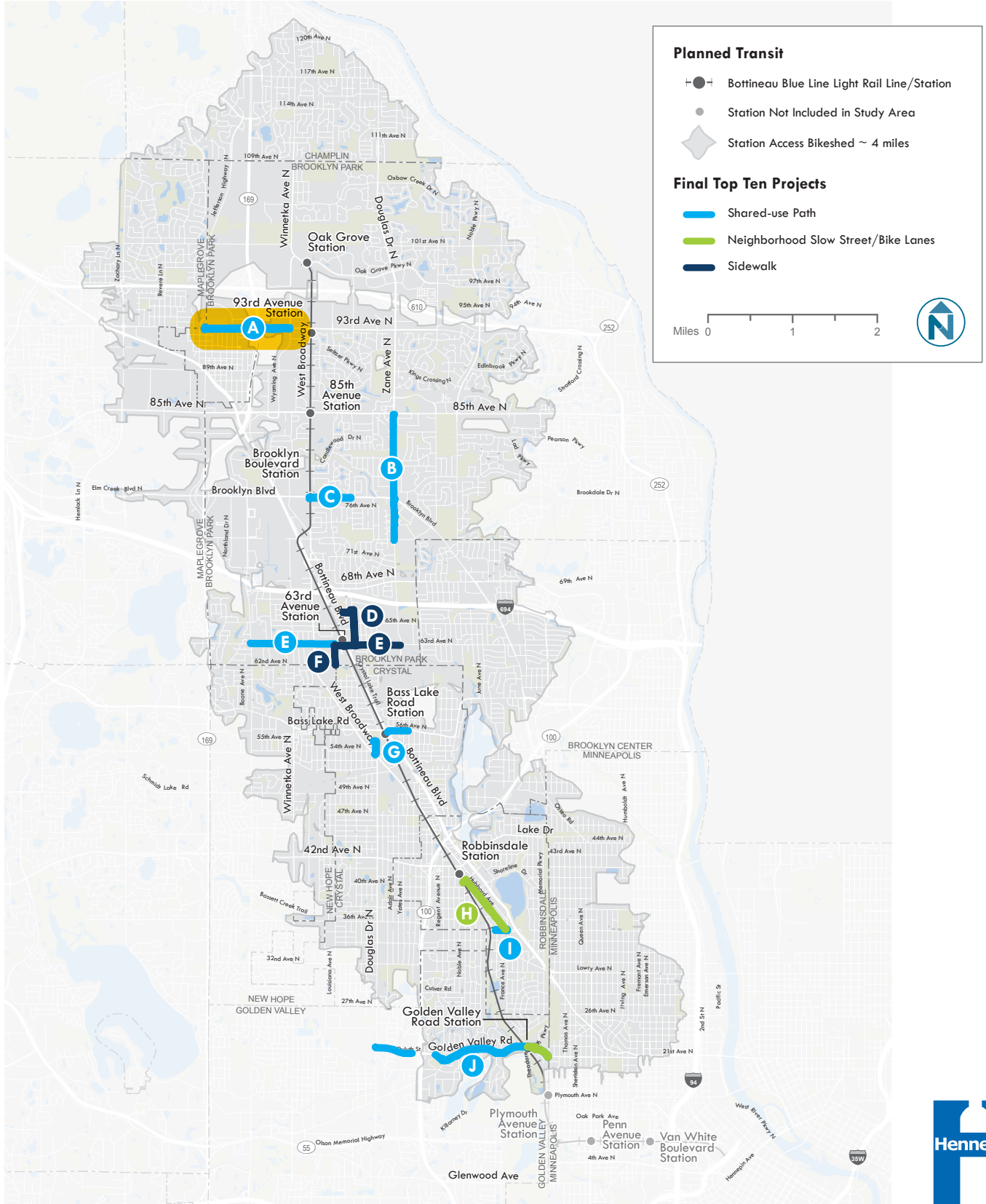
Project Length:
0.4 miles

Estimated Cost:
\$836,000



*Includes estimated construction costs, design and construction administration (Estimated construction in 2023)

Final Ten Projects



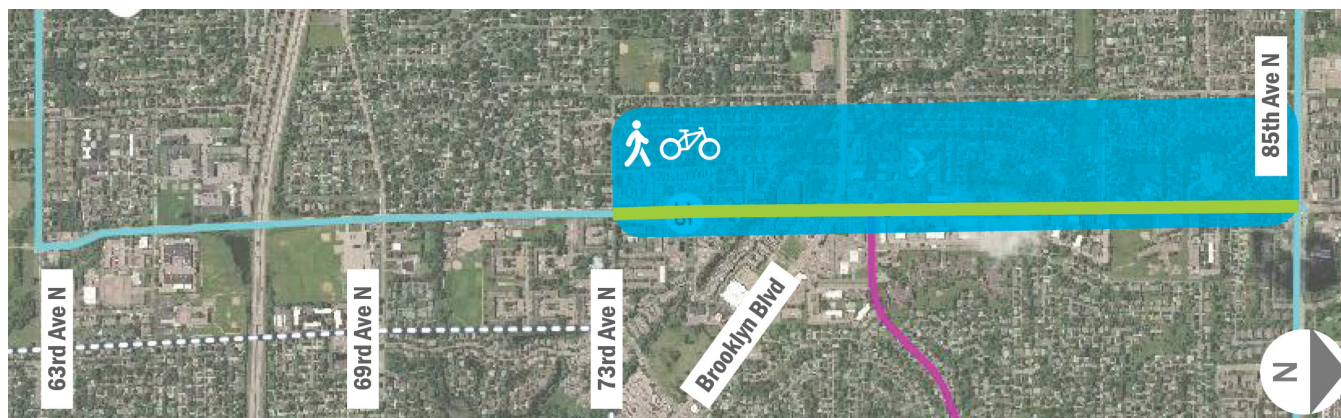
Bottineau Community Works

METRO Blue Line Extension Planning for Community Connections

The Hennepin County Bottineau Community Works program has been collaborating with cities and community partners in the Bottineau Corridor where the METRO Blue Line Extension will run to maximize community benefits of Light Rail Transit. This project focused on infrastructure enhancements to improve connections for people walking, biking, and rolling near planned light rail stations in the cities of Golden Valley, Robbinsdale, Crystal and Brooklyn Park. The following is one of ten projects selected from more than 450 potential bicycle and pedestrian projects. Design plans for the final ten projects have been developed at the 60 percent engineering level, including identifying potential implementation challenges and funding needs that will need to be addressed to move forward.

Project B: Zane Avenue North

City of Brooklyn Park



Shared-use path along Zane Avenue North between 73rd Avenue North and 85th Avenue North creates a connection between existing shared-use paths. The new path will serve higher density residential units clustered at Zane Avenue North and Brooklyn Boulevard.

Facility Type:
Shared-use Path

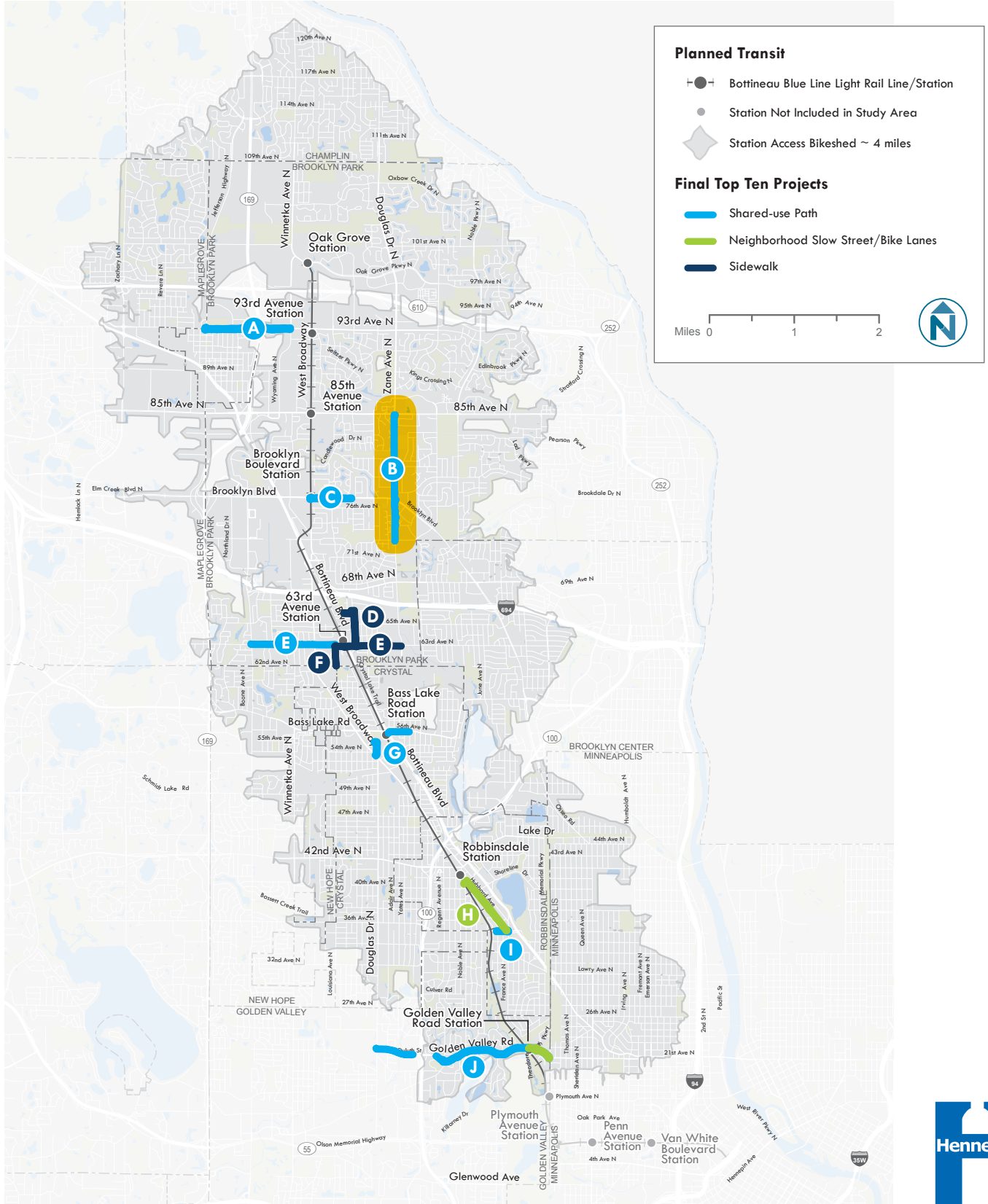
Project Length:
1.5 miles

Estimated Cost:
\$2,249,000

*Includes estimated construction costs, design and construction administration (Estimated construction in 2023)



Final Ten Projects



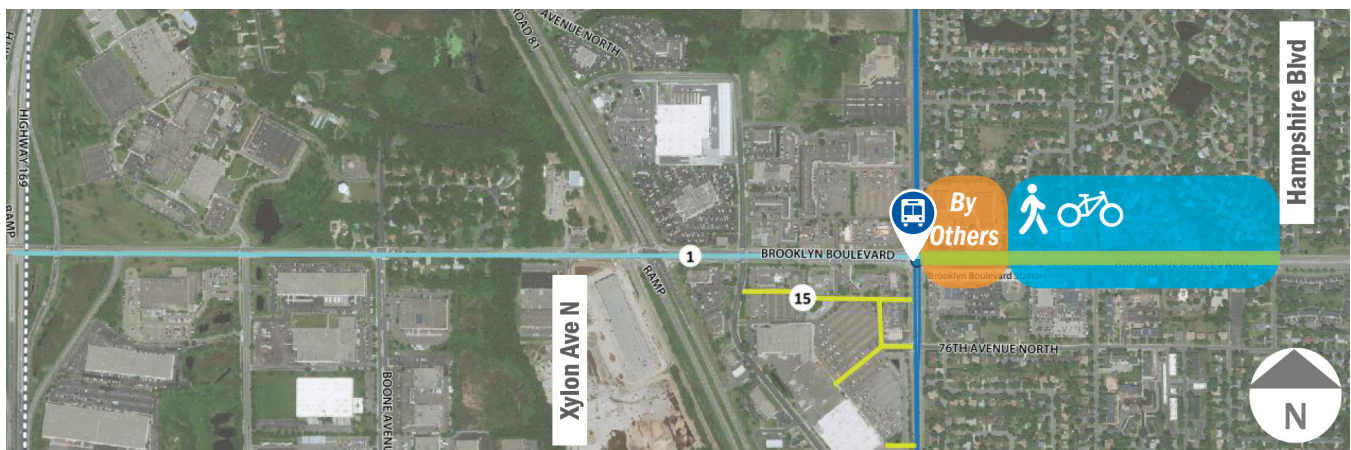
Bottineau Community Works

METRO Blue Line Extension Planning for Community Connections

The Hennepin County Bottineau Community Works program has been collaborating with cities and community partners in the Bottineau Corridor where the METRO Blue Line Extension will run to maximize community benefits of Light Rail Transit. This project focused on infrastructure enhancements to improve connections for people walking, biking, and rolling near planned light rail stations in the cities of Golden Valley, Robbinsdale, Crystal and Brooklyn Park. The following is one of ten projects selected from more than 450 potential bicycle and pedestrian projects. Design plans for the final ten projects have been developed at the 60 percent engineering level, including identifying potential implementation challenges and funding needs that will need to be addressed to move forward.

Project C: Brooklyn Boulevard

City of Brooklyn Park



Shared-use path along Brooklyn Boulevard will connect to existing and planned paths along Brooklyn Boulevard. Longer term, this project will allow for a trail connection between the Crystal Lake Regional Trail along Bottineau Boulevard and Zane Avenue North as well as trails along West Broadway Avenue. This project helps form the trail network that will tie the Brooklyn Boulevard LRT station to the surrounding area which is anchored by large retail uses.

Facility Type:
Shared-use Path

Project Length:
0.3 miles

Estimated Cost:
\$435,000



*Includes estimated construction costs, design and construction administration (Estimated construction in 2023)

Bottineau Community Works

METRO Blue Line Extension Planning for Community Connections

The Hennepin County Bottineau Community Works program has been collaborating with cities and community partners in the Bottineau Corridor where the METRO Blue Line Extension will run to maximize community benefits of Light Rail Transit. This project focused on infrastructure enhancements to improve connections for people walking, biking, and rolling near planned light rail stations in the cities of Golden Valley, Robbinsdale, Crystal and Brooklyn Park. The following is one of ten projects selected from more than 450 potential bicycle and pedestrian projects. Design plans for the final ten projects have been developed at the 60 percent engineering level, including identifying potential implementation challenges and funding needs that will need to be addressed to move forward.

Project D: Hampshire Avenue North

City of Brooklyn Park



Sidewalks on either side of Hampshire Avenue between 63rd Avenue North and Lakeland Park off of 66th Avenue North will provide for an improved north-south pedestrian link through a residential neighborhood that will better connect the area to the planned LRT station located at 63rd Avenue North.

Facility Type:
Sidewalk

Project Length:
1.1 miles

Estimated Cost:
\$1,013,000



*Includes estimated construction costs, design and construction administration (Estimated construction in 2023)

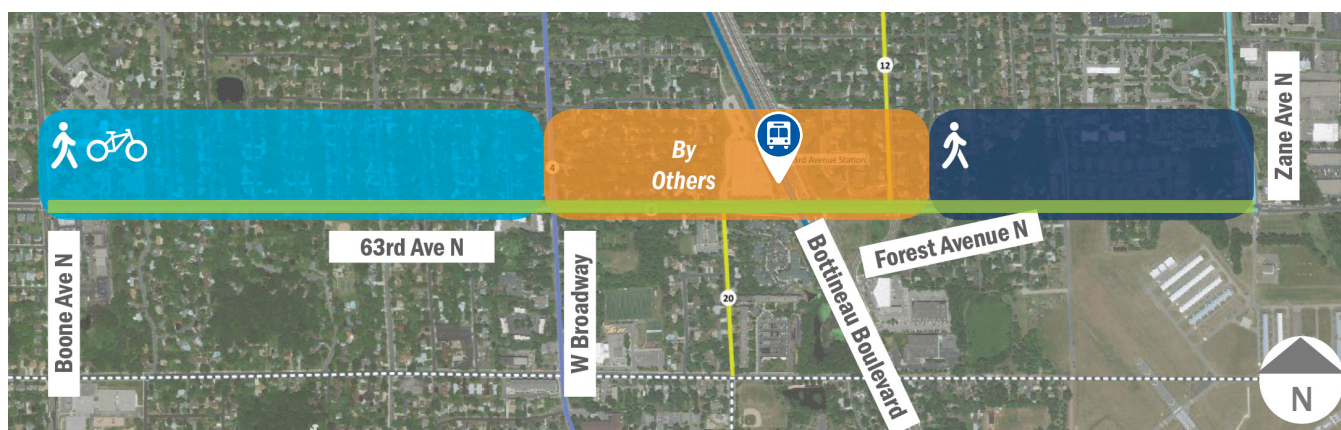
Bottineau Community Works

METRO Blue Line Extension Planning for Community Connections

The Hennepin County Bottineau Community Works program has been collaborating with cities and community partners in the Bottineau Corridor where the METRO Blue Line Extension will run to maximize community benefits of Light Rail Transit. This project focused on infrastructure enhancements to improve connections for people walking, biking, and rolling near planned light rail stations in the cities of Golden Valley, Robbinsdale, Crystal and Brooklyn Park. The following is one of ten projects selected from more than 450 potential bicycle and pedestrian projects. Design plans for the final ten projects have been developed at the 60 percent engineering level, including identifying potential implementation challenges and funding needs that will need to be addressed to move forward.

Project E: 63rd Avenue North

City of Brooklyn Park



Providing a shared-use path along 63rd Avenue North between Boone Avenue North and West Broadway Avenue will connect a large apartment complex to the planned 63rd Avenue LRT station at Bottineau Boulevard. The sidewalk along 63rd Avenue North between Forest Avenue North and Zane Avenue North will complement recently added bike lanes on this segment of 63rd Avenue North and will further connect the planned LRT station to the neighborhood.

Facility Type:
Shared-use Path
and Sidewalk

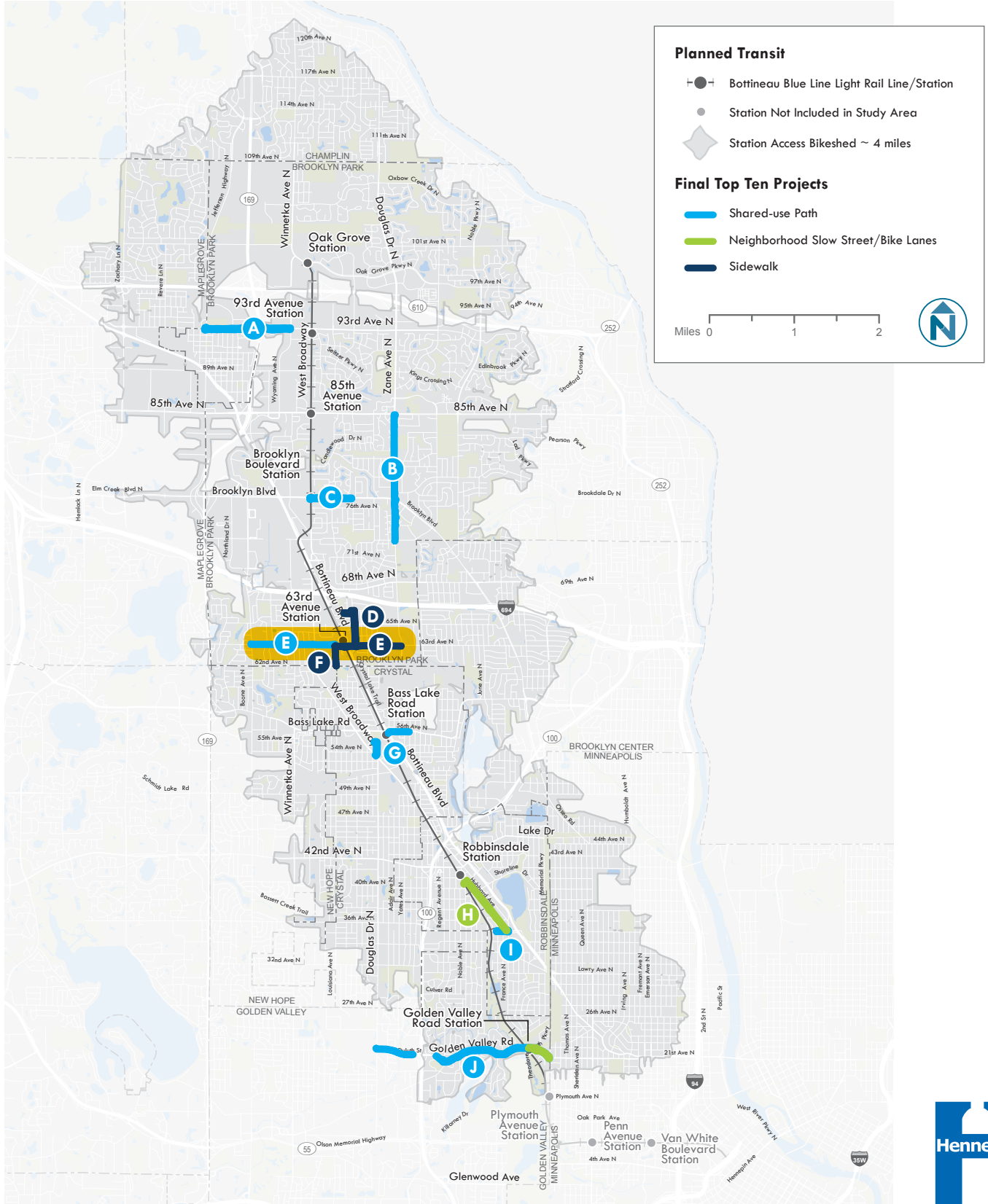
Project Length:
1.5 miles

Estimated Cost:
\$2,315,000



*Includes estimated construction costs, design and construction administration (Estimated construction in 2023)

Final Ten Projects



Bottineau Community Works

METRO Blue Line Extension Planning for Community Connections

The Hennepin County Bottineau Community Works program has been collaborating with cities and community partners in the Bottineau Corridor where the METRO Blue Line Extension will run to maximize community benefits of Light Rail Transit. This project focused on infrastructure enhancements to improve connections for people walking, biking, and rolling near planned light rail stations in the cities of Golden Valley, Robbinsdale, Crystal and Brooklyn Park. The following is one of ten projects selected from more than 450 potential bicycle and pedestrian projects. Design plans for the final ten projects have been developed at the 60 percent engineering level, including identifying potential implementation challenges and funding needs that will need to be addressed to move forward.

Project F: Louisiana Avenue North

City of Brooklyn Park



This one block segment of sidewalk along Louisiana Avenue North creates a direct pedestrian connection to the planned LRT station at 63rd Avenue North and several apartment complexes. The sidewalk project will also connect to the existing sidewalk network in the adjacent City of Crystal and tie into Prairie Seeds Academy.

Facility Type:
Sidewalk

Project Length:
0.3 miles

Estimated Cost:
\$266,000

*Includes estimated construction costs, design and construction administration (Estimated construction in 2023)



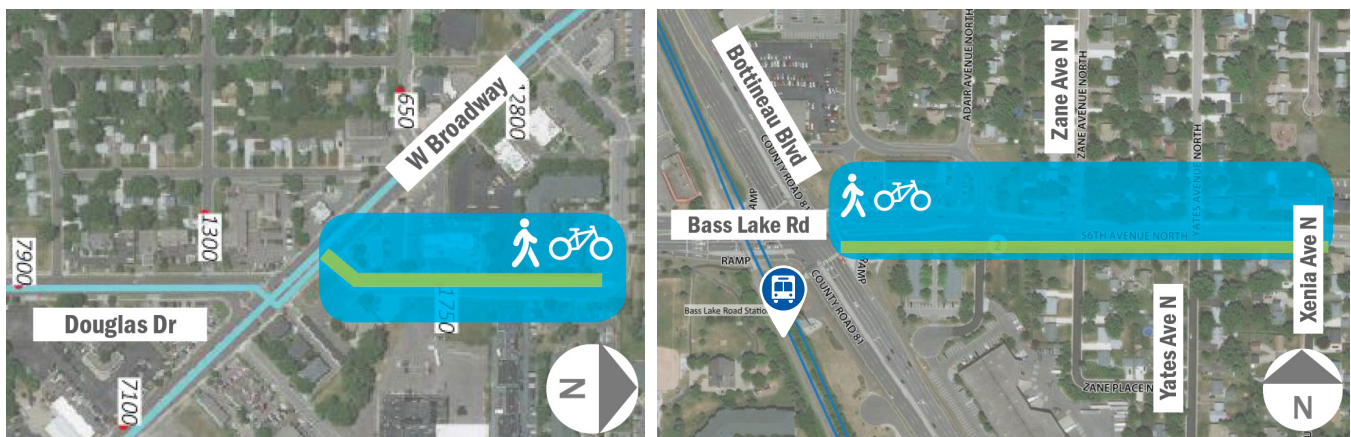
Bottineau Community Works

METRO Blue Line Extension Planning for Community Connections

The Hennepin County Bottineau Community Works program has been collaborating with cities and community partners in the Bottineau Corridor where the METRO Blue Line Extension will run to maximize community benefits of Light Rail Transit. This project focused on infrastructure enhancements to improve connections for people walking, biking, and rolling near planned light rail stations in the cities of Golden Valley, Robbinsdale, Crystal and Brooklyn Park. The following is one of ten projects selected from more than 450 potential bicycle and pedestrian projects. Design plans for the final ten projects have been developed at the 60 percent engineering level, including identifying potential implementation challenges and funding needs that will need to be addressed to move forward.

Project G: Douglas Drive North and Bass Lake Road

City of Crystal



The Douglas Drive portion of the project creates a shared-use path between the soon to be reconstructed Becker Park and West Broadway Avenue. This connection will serve two large apartment complexes. A shared-use path on Bass Lake Road between Bottineau Boulevard and Xenia Avenue North creates a link between recently added bikes lanes east of Xenia Avenue North to the planned LRT station located at Bass Lake Road.

Facility Type:
Shared-use Path

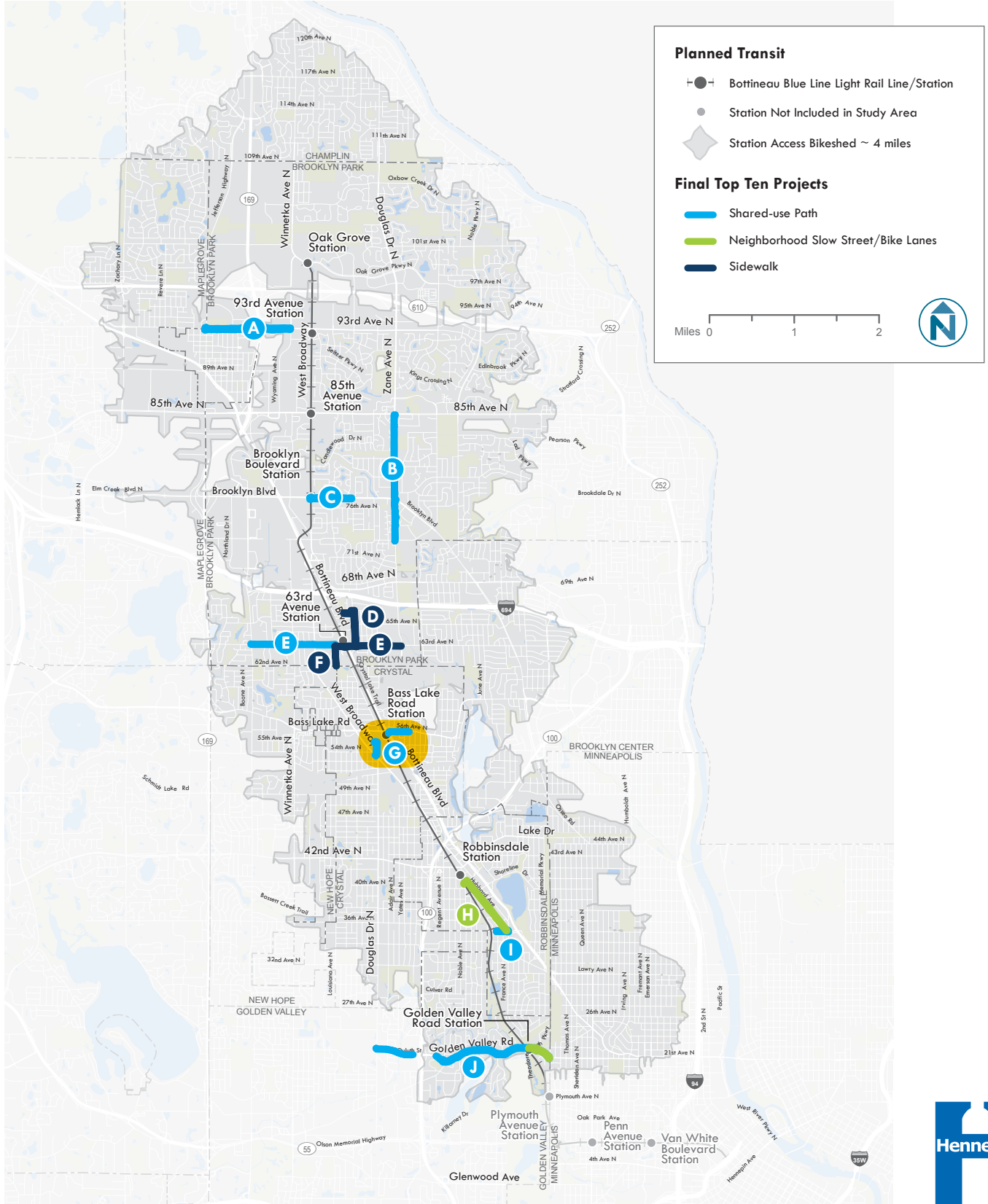
Project Length:
0.5 miles

Estimated Cost:
\$843,000



*Includes estimated construction costs, design and construction administration (Estimated construction in 2023)

Final Ten Projects



Bottineau Community Works

METRO Blue Line Extension Planning for Community Connections

The Hennepin County Bottineau Community Works program has been collaborating with cities and community partners in the Bottineau Corridor where the METRO Blue Line Extension will run to maximize community benefits of Light Rail Transit. This project focused on infrastructure enhancements to improve connections for people walking, biking, and rolling near planned light rail stations in the cities of Golden Valley, Robbinsdale, Crystal and Brooklyn Park. The following is one of ten projects selected from more than 450 potential bicycle and pedestrian projects. Design plans for the final ten projects have been developed at the 60 percent engineering level, including identifying potential implementation challenges and funding needs that will need to be addressed to move forward.

Project H: Hubbard Avenue North

City of Robbinsdale



Implementing a neighborhood slow street design on Hubbard Avenue North between 36th Avenue North and 41st Avenue North and a shared-use path along 41st Avenue North will allow for a safer bicycle route to the planned LRT station near 42nd Avenue. Hubbard Avenue North parallels West Broadway Avenue, but is deemed a safer bicycle route.

Facility Type:
Slow Street and
Sharded-use Path

Project Length:
0.7 miles

Estimated Cost:
\$200,000

*Includes estimated construction costs, design and construction administration (Estimated construction in 2023)



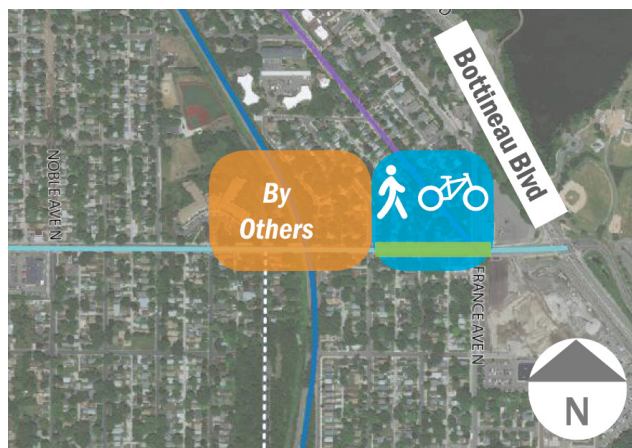
Bottineau Community Works

METRO Blue Line Extension Planning for Community Connections

The Hennepin County Bottineau Community Works program has been collaborating with cities and community partners in the Bottineau Corridor where the METRO Blue Line Extension will run to maximize community benefits of Light Rail Transit. This project focused on infrastructure enhancements to improve connections for people walking, biking, and rolling near planned light rail stations in the cities of Golden Valley, Robbinsdale, Crystal and Brooklyn Park. The following is one of ten projects selected from more than 450 potential bicycle and pedestrian projects. Design plans for the final ten projects have been developed at the 60 percent engineering level, including identifying potential implementation challenges and funding needs that will need to be addressed to move forward.

Project I: 36th Avenue North

City of Robbinsdale



This short segment of trail along 36th Avenue North connects to existing bike lanes along France Avenue North, a planned neighborhood slow street along Hubbard Avenue North, and a planned shared-use path along 36th Avenue North west of Halifax Avenue North that will connect to trails in Sochacki Park. This allows for a broader bicycle and pedestrian connection to the planned LRT station.

Facility Type:
Shared-use Path

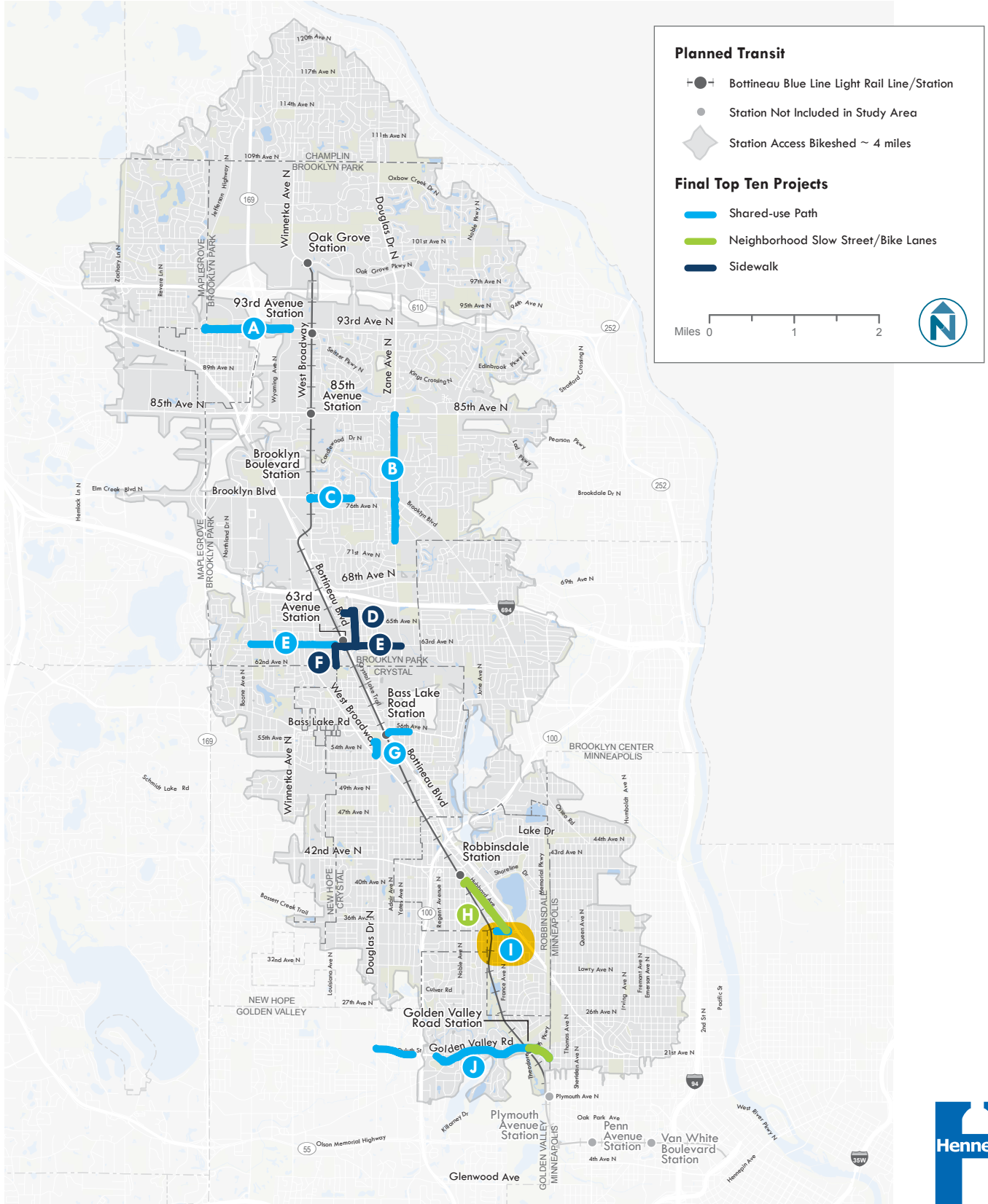
Project Length:
0.1 miles

Estimated Cost:
\$217,000

*Includes estimated construction costs, design and construction administration (Estimated construction in 2023)



Final Ten Projects



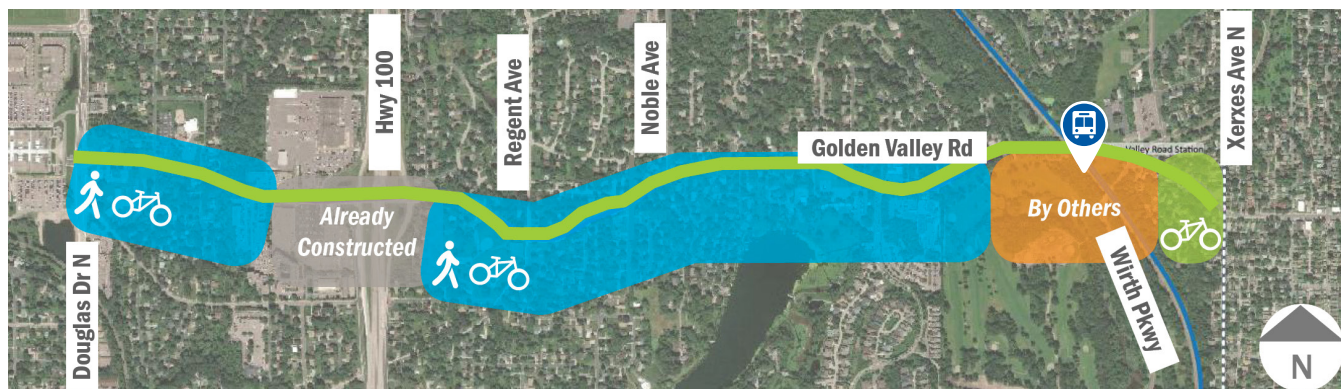
Bottineau Community Works

METRO Blue Line Extension Planning for Community Connections

The Hennepin County Bottineau Community Works program has been collaborating with cities and community partners in the Bottineau Corridor where the METRO Blue Line Extension will run to maximize community benefits of Light Rail Transit. This project focused on infrastructure enhancements to improve connections for people walking, biking, and rolling near planned light rail stations in the cities of Golden Valley, Robbinsdale, Crystal and Brooklyn Park. The following is one of ten projects selected from more than 450 potential bicycle and pedestrian projects. Design plans for the final ten projects have been developed at the 60 percent engineering level, including identifying potential implementation challenges and funding needs that will need to be addressed to move forward.

Project J: Duluth Street and Golden Valley Road

City of Golden Valley



Duluth Street between Douglas Drive North and Regent Avenue North will serve to create a bicycle connection between the planned Golden Valley Road LRT station and the large employment centers located at Douglas Drive North. Golden Valley Road between Theodore Wirth Parkway and Regent Avenue North serves as Three Rivers Park District's Bassett Creek Regional Trail and is one of the last segments of this regional trail yet to be constructed. Golden Valley Road east of Theodore Wirth Parkway extends a planned bike lane east to Xerxes Avenue North.

Facility Type:
Shared-use Path
and Bike Lanes

Project Length:
1.5 miles

Estimated Cost:
\$6,000,000



*Includes estimated construction costs, design and construction administration (Estimated construction in 2023)

Final Ten Projects

