



Advancing equity along the Blue Line Extension



BlueLineExt.org



Blue Line Light Rail Extension project

The Blue Line Extension will run from downtown Minneapolis to Brooklyn Park, connecting some of our region's most diverse communities and transit reliant residents to jobs, education, and opportunities.

After over a century of disinvestment, racial covenants, and redlining, we have a duty to ensure that existing residents, small businesses, and cultural institutions are both engaged in and able to benefit from the increased public and private development occurring in their neighborhoods.

By advancing robust anti-displacement and community wealth building strategies alongside the light rail project, we aim to set a national standard for how projects of this scale can leverage existing community assets to maximize community and economic benefits to existing residents, businesses and communities.

This guide shares some of the challenges these communities face and opportunities for the Blue Line Extension to reduce disparities and improve people's lives.



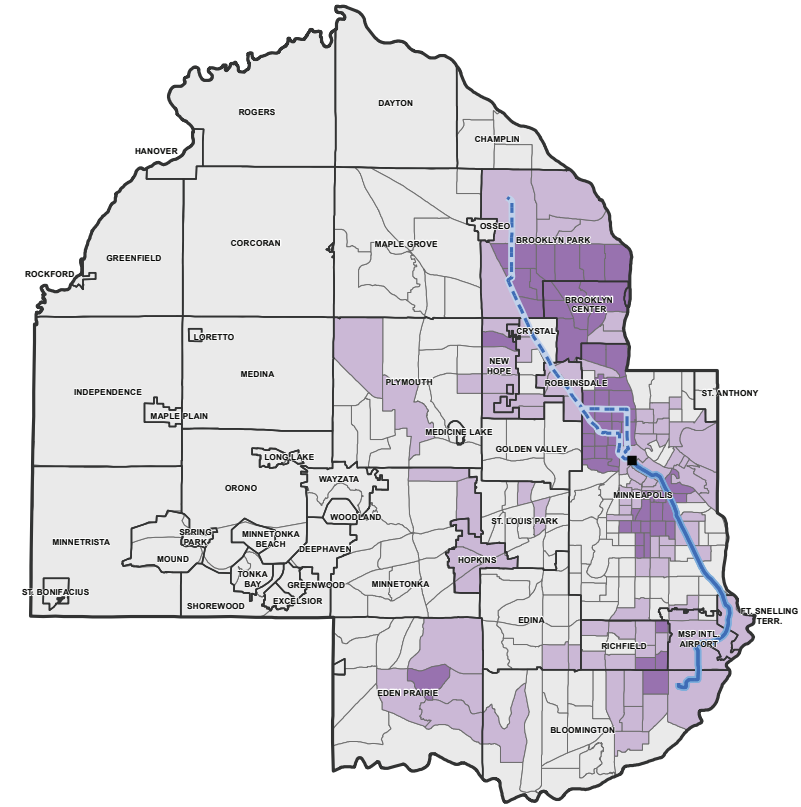
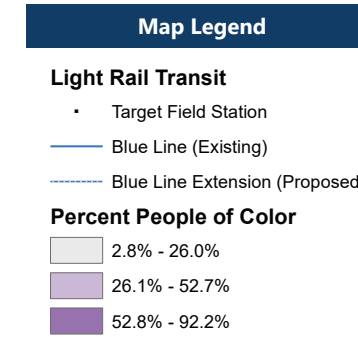
Serve communities of color and people who rely on transit

Light rail will connect people to new opportunities and destinations in areas with:

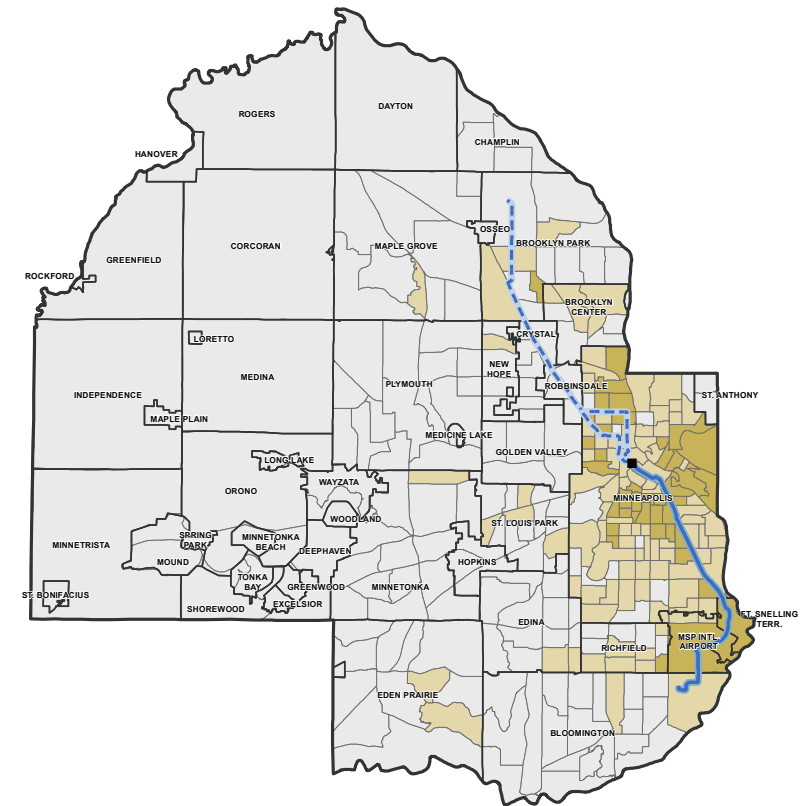
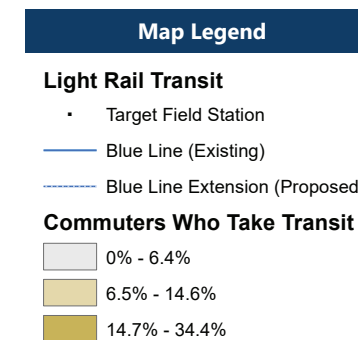
- majority people of color
- high rates of people who use transit to meet everyday needs

Strategy: Partnering with cultural and community organizations to engage diverse stakeholders in planning and decision-making

People of color



Transit commuters





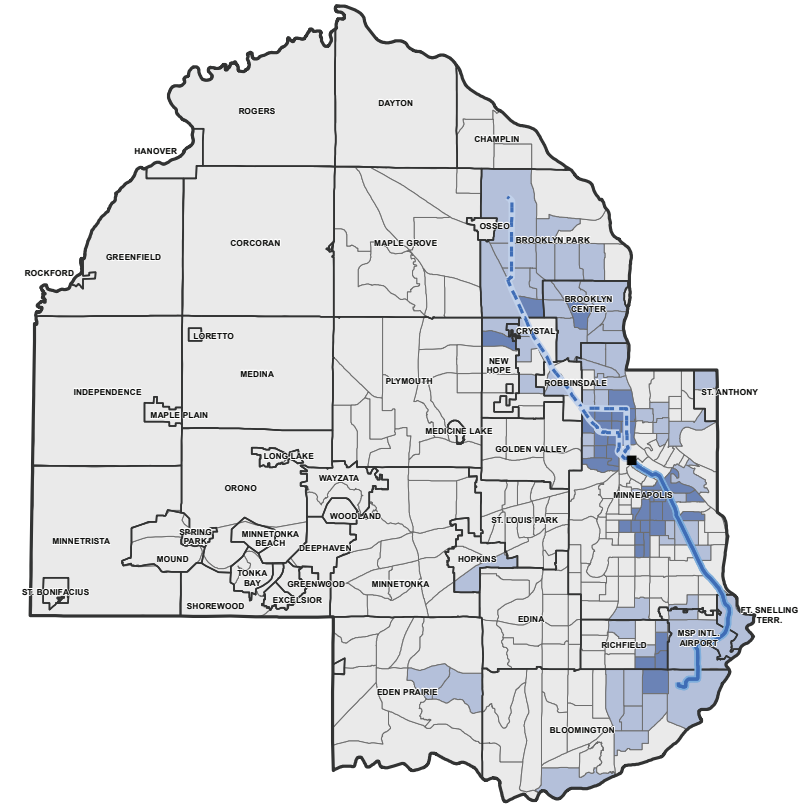
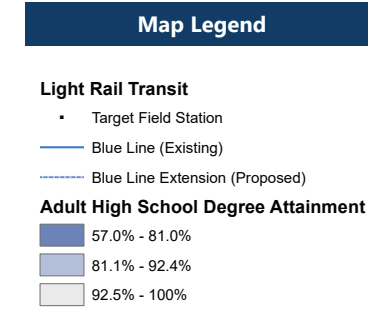
Connect people to jobs and education

Linking people more efficiently to educational and employment opportunities will reduce commute times, increase access to goods and services, and unlock potential in a corridor with:

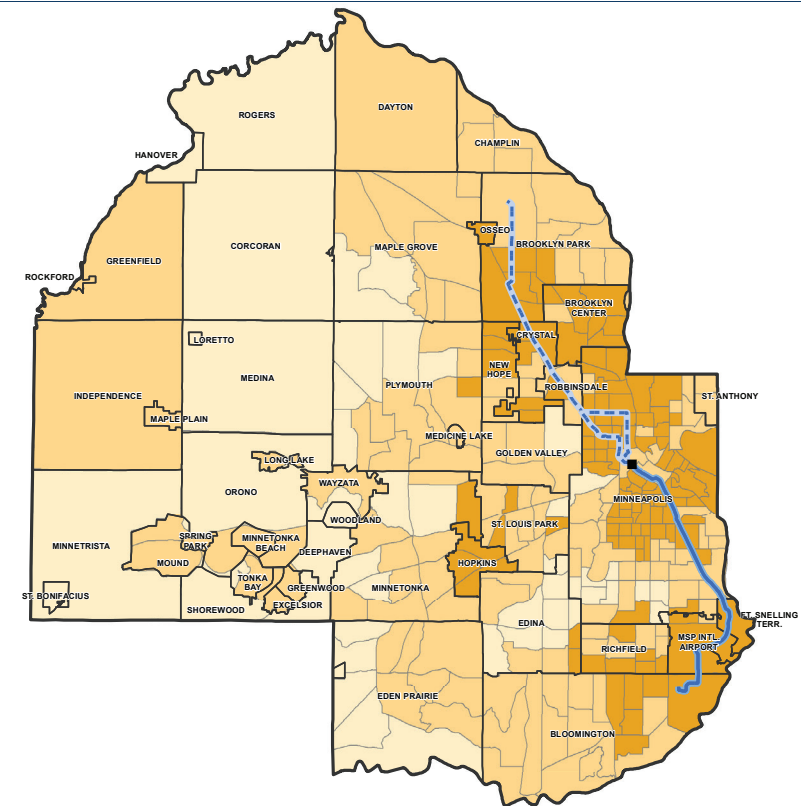
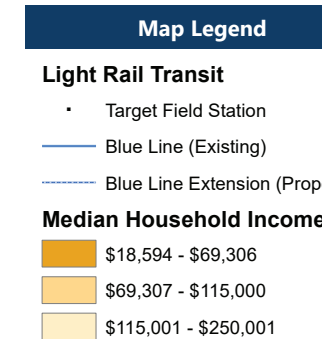
- high rates of people over 25 without high school degrees
- some of the lowest household incomes in the region

Strategy: Work closely with educational institutions and employers along the line to ensure students and workers are served and connected

Adults over 25 with a high school degree



Median Household income





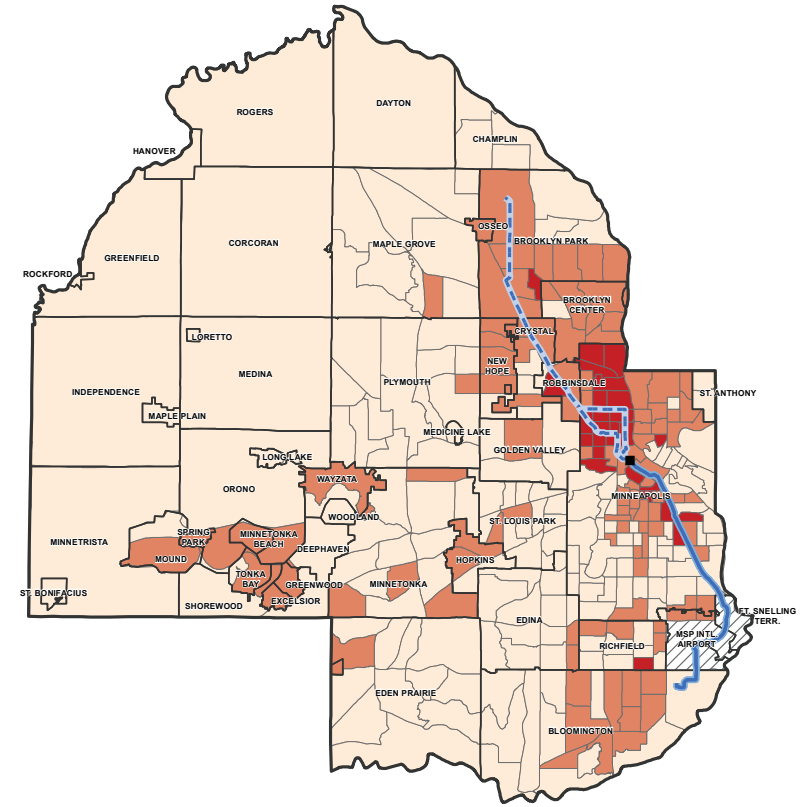
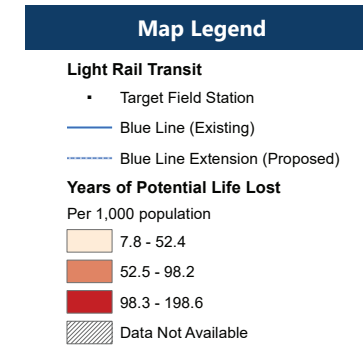
Improve public health and reduce pollution

Connecting people to quality health care and providing clean active transportation choices will serve as a lifeline for well being in a corridor where residents:

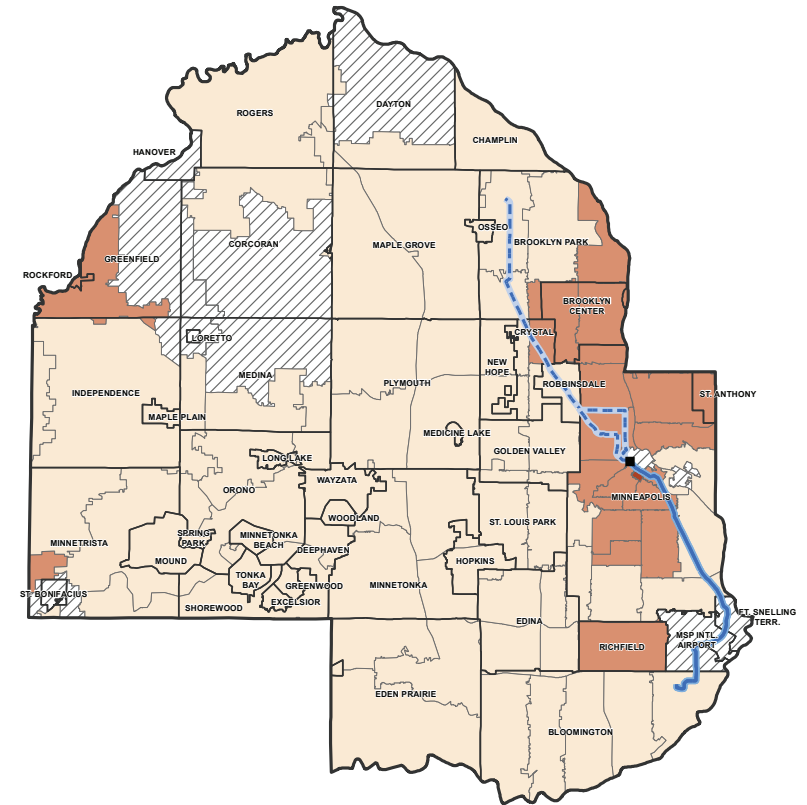
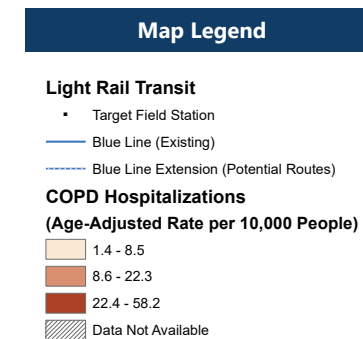
- are more likely to experience premature death
- are more likely to be hospitalized for COPD

Strategies: Direct connection with North Memorial hospital. Incorporate active transportation investments in station area planning, work with health institutions to best serve and connect patients and workers, advance clean transportation options that support climate action goals

Rates of premature death as measured by Years of Potential Life Lost (YPLL)



Hospitalization rates for people with chronic obstructive pulmonary disease (COPD)





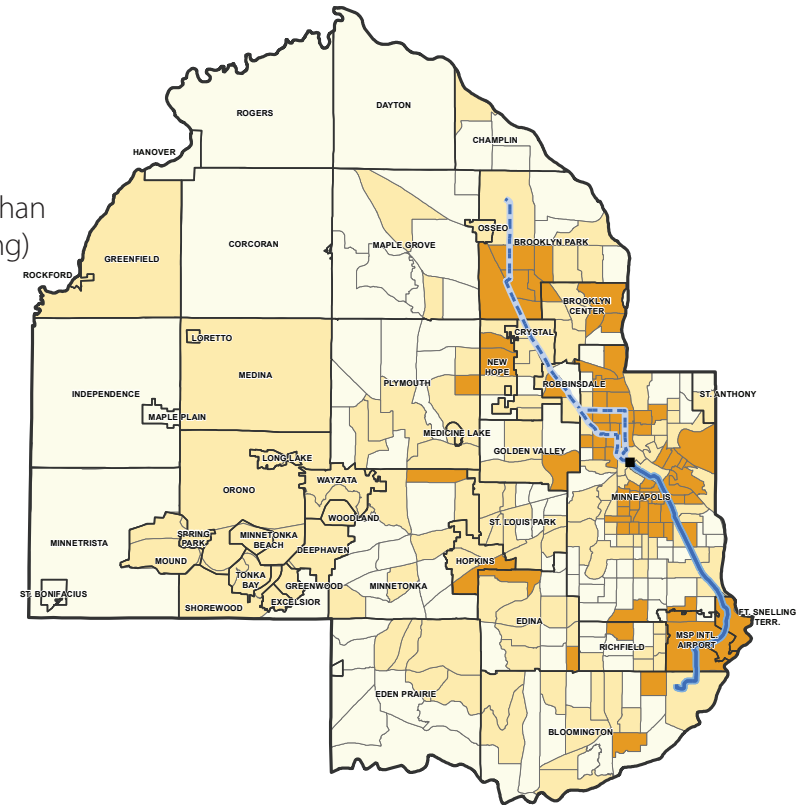
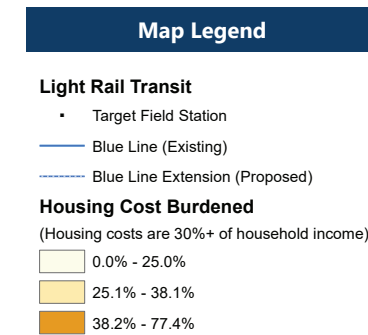
Increase access to affordable housing

Ensuring access to affordable housing will create strong foundations on which residents can build stable lives in areas with:

- high rates of housing cost burden
- a history of systemic redlining and racist covenants

Strategies: Inclusive zoning ordinances in station areas, guide affordable housing development and preservation, expand homeownership and home rehab programs, advance robust anti-displacement and renter protection strategies

Rates of housing cost burden
(someone who spends more than 30% of their income on housing)

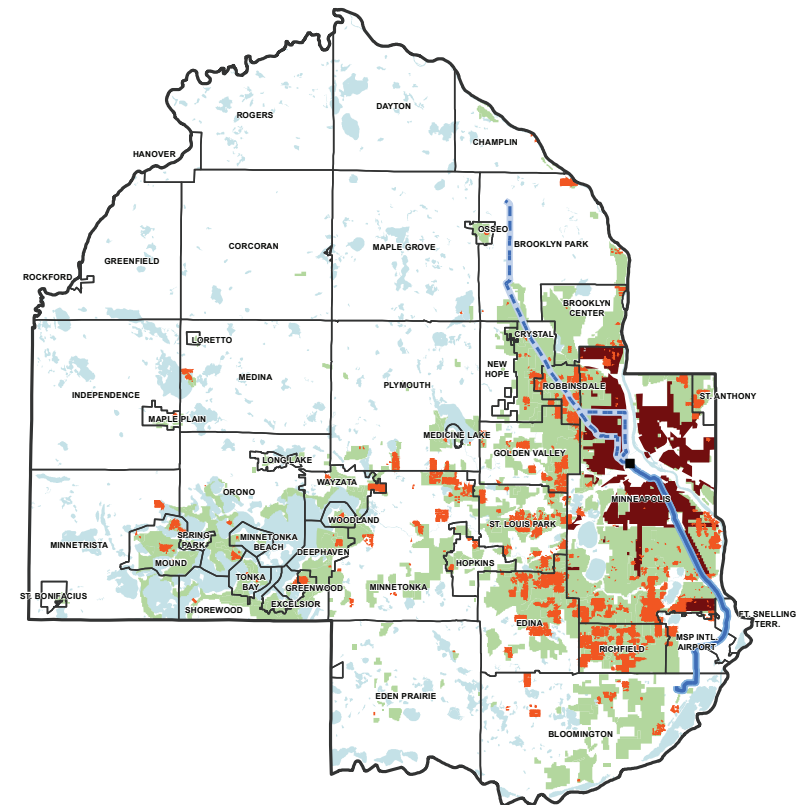
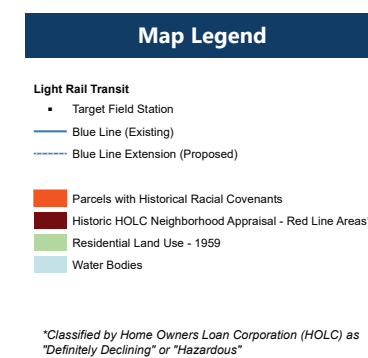


Ensuring access to affordable housing will create strong foundations on which residents can build stable lives in areas with:

- high rates of housing cost burden
- a history of systemic redlining and racist covenants

Strategies: Inclusive zoning ordinances in station areas, guide affordable housing development and preservation, expand homeownership and home rehab programs, advance robust anti-displacement and renter protection strategies

Historical redlining and Racial Covenants





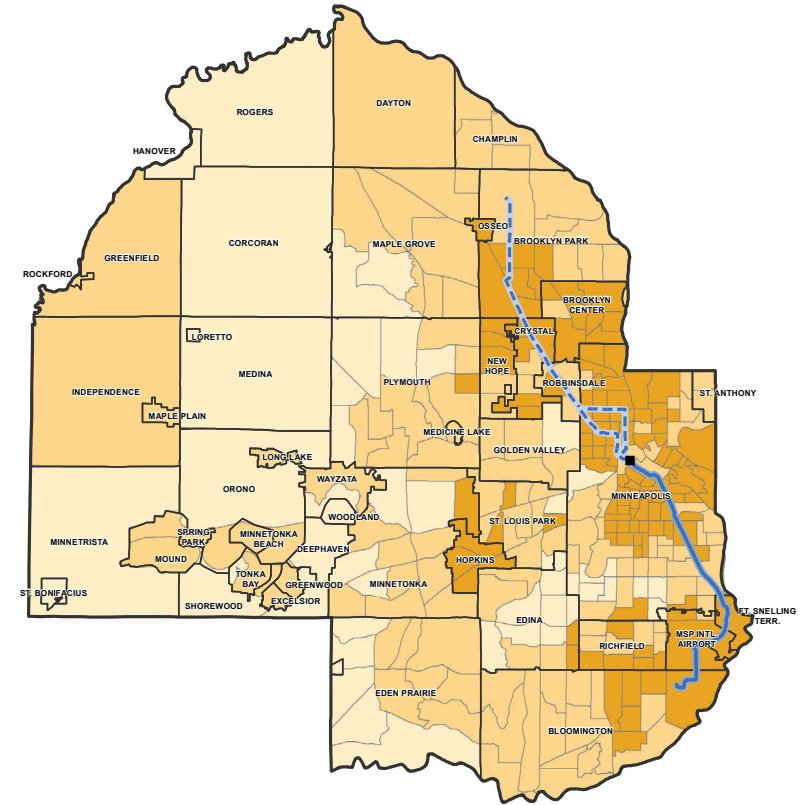
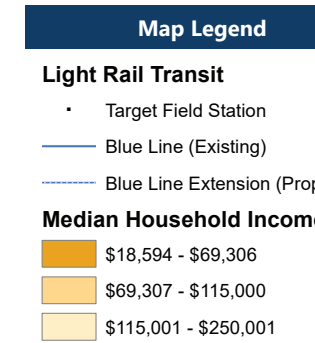
Help residents and communities build wealth in place

Investing in community-driven visions for economic development in the corridor will grow prosperity in areas with:

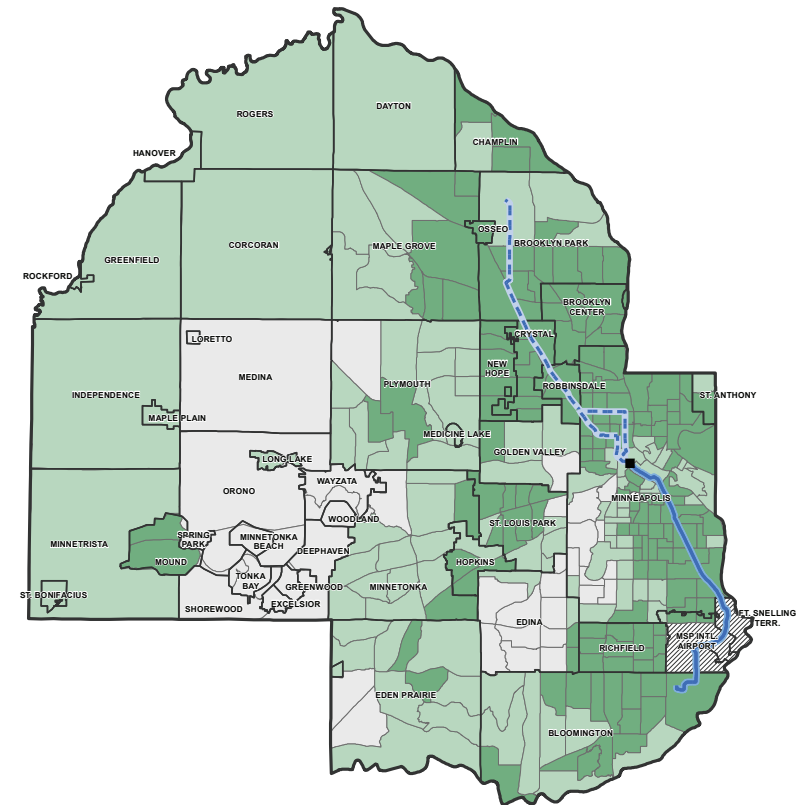
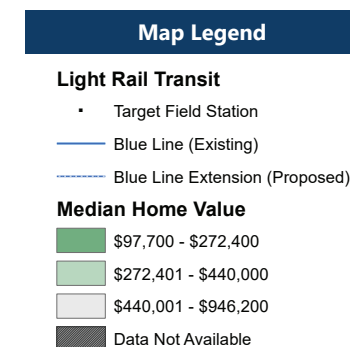
- low household incomes
- low home values

Strategies: Small business support and technical assistance, actionable anti-displacement strategies, community and economic development planning, strong project local workforce and Disadvantaged Business Enterprise (DBE) benchmarks

Median Household Income



Median Home Value





Setting a new standard for community wealth building and anti-displacement strategies along light rail

Explore the corridor's many assets and destinations: <https://arcg.is/19T5z40>



[BlueLineExt.org](https://www.bluelineext.org)