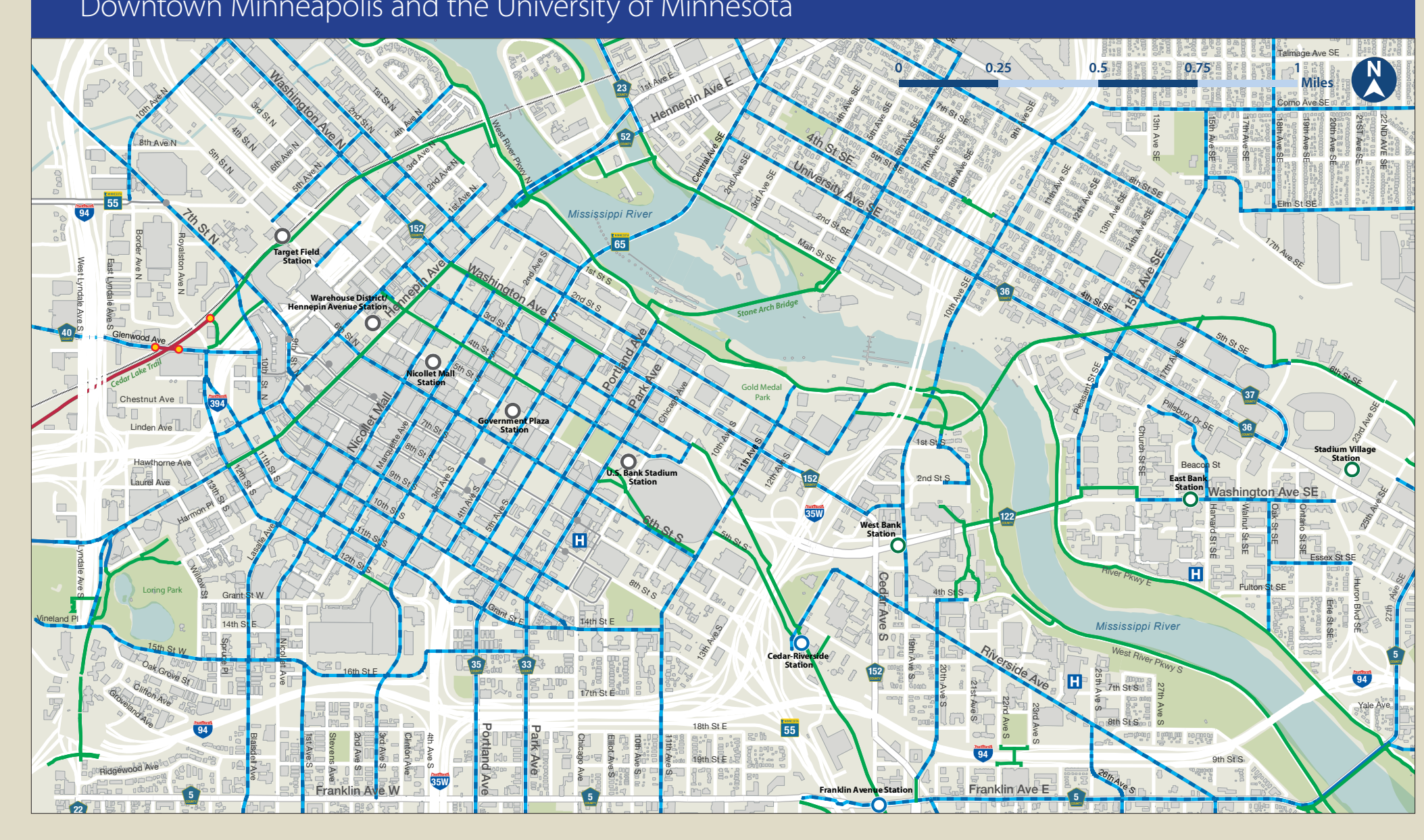
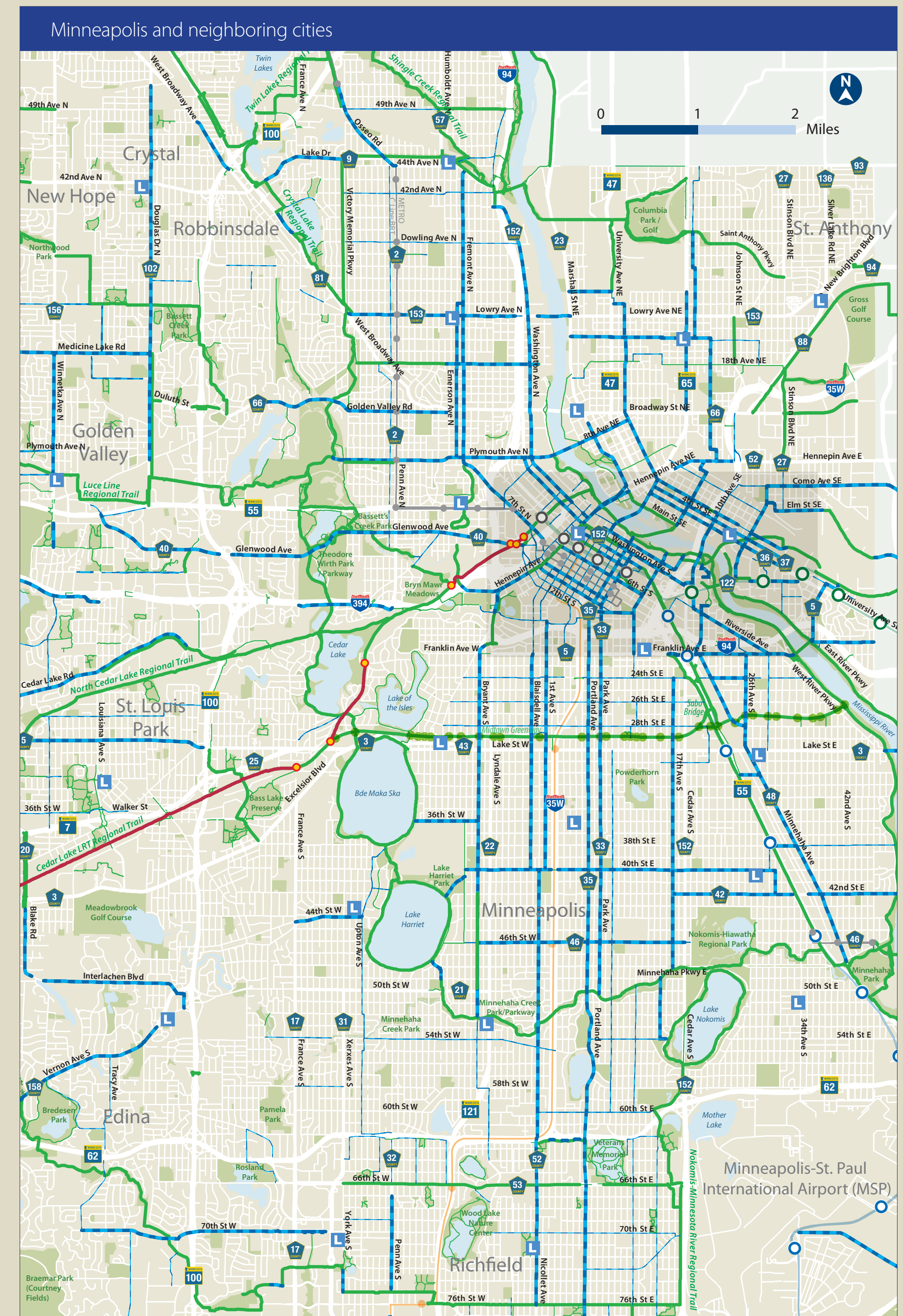
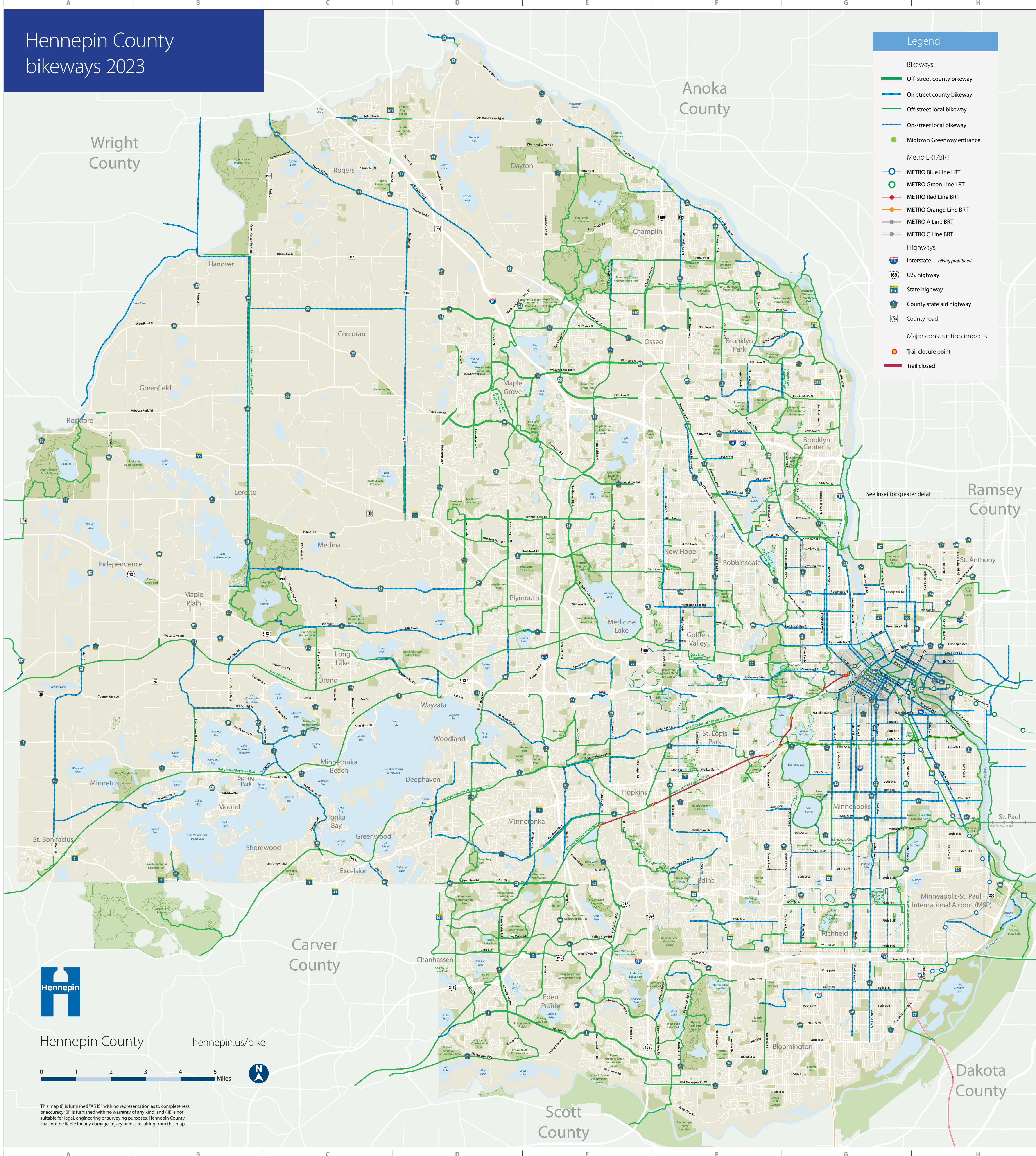


Hennepin County bikeways 2023



Hennepin
 Hennepin County
hennepin.us/bike

This map is furnished "AS IS" with no representation as to completeness or accuracy. Hennepin County shall not be liable for any damage, injury or loss resulting from this map.

Together we ride

With more than 750 miles of bikeways, you can connect to services, businesses and world-class parks all across Hennepin County.

In 2023, county bikeways help people get to where they live, work and play. Here are some of the many ways the network brings people together.



Webber Parkway Make county connections

Hennepin County reconstructed **County Road 152** in North Minneapolis on portions of 44th Avenue, Webber Parkway, and Lyndale Avenue North. The corridor now includes new bikeways, bus stations, and pedestrian crossings and is safer for people walking, biking, using transit, and driving. The new corridor opened in late 2022 and knits together parks, **Webber Park Library**, local businesses, and transit stops to create a better and greener experience for everyone.

Hennepin County libraries

Several libraries are located along bike trails and offer convenient bike storage. In addition to a collection of more than 5 million items, you can access free Wi-Fi and public restrooms at 41 locations across the county. Visit hclib.org for hours and details.

- Golden Valley Library** off the Luce Line Trail
- Excelsior Library** off the Lake Minnetonka Regional Trail
- Webber Park Library** off Victory Memorial Parkway



Celebrate communities and culture

There are attractions and events to explore across the county, and many are accessible by bike. These festivities are a chance to come together with our neighbors and celebrate what makes the county special.

Here are just a few ways you can join in the fun in 2023.

Open Streets

Select roadways are closed for a day on various weekends to driving and open to walking and biking. openstreetsmpls.org



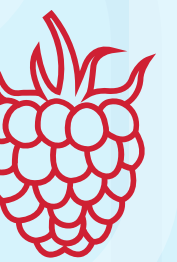
Music in Plymouth

On July 6, the Hilde Performance Center in Plymouth hosts a performance by the Minnesota Orchestra accompanied by fireworks, a celebration that dates back more than 50 years. musicinplymouth.org



Hopkins Raspberry Festival

The world's largest raspberry sculpture is the centerpiece of the Hopkins Raspberry festival that runs July 12–16. A parade, marketplace and a coronation of "Raspberry Royalty" draws visitors to downtown Hopkins. raspberrycapital.com



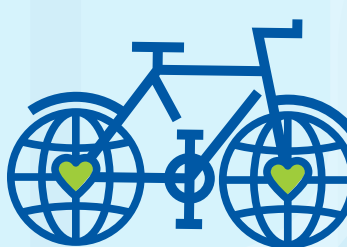
Uptown Art Fair

The Uptown Art Fair in Minneapolis, held August 4–6, showcases the work of local artists. A section of Hennepin Avenue is closed off to traffic and opened to artwork, food, and cultural programming of all sorts. uptownminneapolis.com



Car-Free Day

September 22 marks a day to get around without using a car. Try running an errand, commuting or any number of things on your bike. carfreemsp.com



Free

Bike Map

HENNEPIN COUNTY MINNESOTA

Ride resources

Hennepin County

Learn more about the county's plan for biking hennepin.us/bike

Interactive county bike map hennepin.us/ride

Bike or pedestrian issues, map corrections or comments
612-543-3377
ride@hennepin.us

County road service requests (potholes, obstructions, etc.)
612-596-0299
hennepin.us/reportaproblem

Regional park partners

Minneapolis Park and Recreation Board
612-230-6400
minneapolisparke.com

Three Rivers Park District
763-559-9000
threeriversparke.com



Parks where we gather

Great to bike to, hike in and explore, **Three Rivers Park District** offers regional parks that include:

- Nestled in Eden Prairie, **Bryant Lake Regional Park** offers wonderful hiking trails with a chance at spotting some local wildlife.
- **Crow-Hassan Park Reserve** in Rogers sits alongside the Crow River. The sprawling area includes camping areas, an off-leash dog park, and trails for horseback riding.
- Just south of Minnetrista off the **Dakota Rail Trail** lies **Gale Woods Farm**. A real working farm, Gale Woods offers educational programming with farm animals as well as farm-handy trades.

Bike parks

In addition to the many wonderful parks across Hennepin County, several bike parks can now be found for those looking to sharpen their two-wheeled skills. Hone your abilities from the pump track of **Perkins Hill Park** in North Minneapolis to the skills parks of **Nokomis**, **Bryn Mawr** and **Northeast**.

Trails to traverse

For the adventurous mountain bikers, trails offer an exhilarating off-road experience. Some options around Hennepin County include:

- A 12-mile mountain bike loop in **Elm Creek Park Reserve** in Maple Grove and Champlin.
- A nearly 5-mile mountain bike trail in Minnetonka's **Lone Lake Park**, created with help from a Hennepin County Youth Sports Grant.
- The peace of the 13-mile **Lake Rebecca** single track biking trail.

Exploring the Greenway

Highlighted as a hall of fame trail by Rails to Trails Conservancy, the **Midtown Greenway's** 5.5 miles of paved bikeway are a gem of Hennepin County biking, linking the Minneapolis Chain of Lakes to the Mississippi River.

Adopt-a-Greenway

Want to help maintain the Greenway we all know and love? Adopt a section to make it your own and keep this shared resource clean. midtowngreenway.org



Connect to transit

You're always welcome to bring your bike on buses and trains. Expand your biking options by using transit. The recently opened Bus Rapid Transit (BRT) METRO D-Line connects users with faster connections to bike routes such as the **Nine Mile Creek Regional Trail**, the **Midtown Greenway**, and many others.

More transit improvements are on the way! As more BRT and light rail transit options become available in the county, we are working to enhance bike access around the stations. metrotransit.org/bicycle



Hennepin County Board of Commissioners