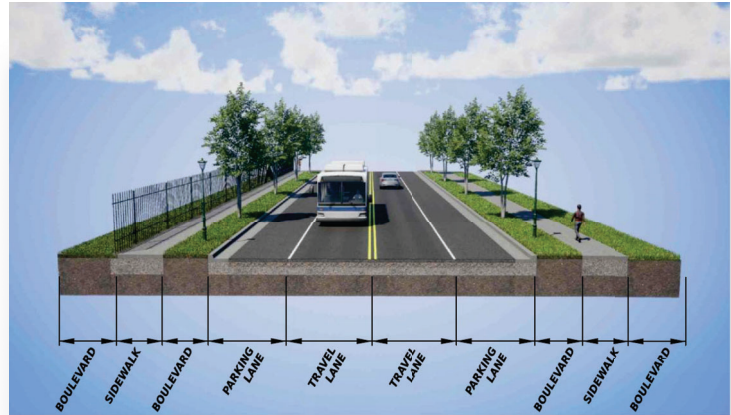


# Existing conditions



Aerial view of Cedar Avenue Corridor area



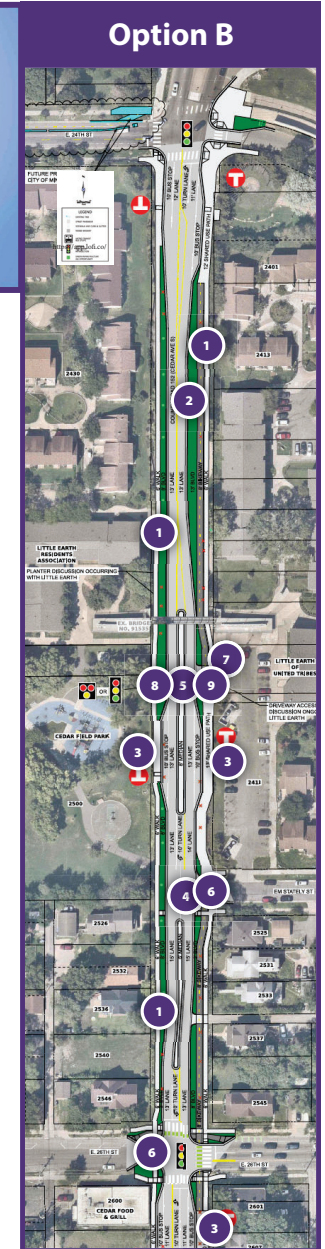
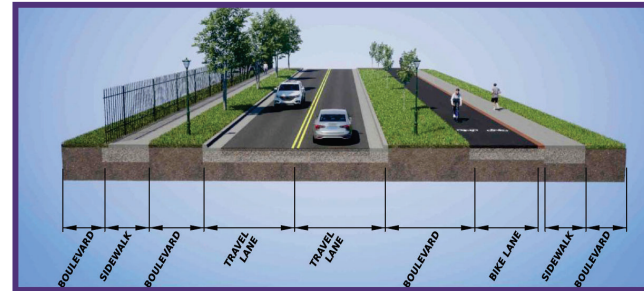
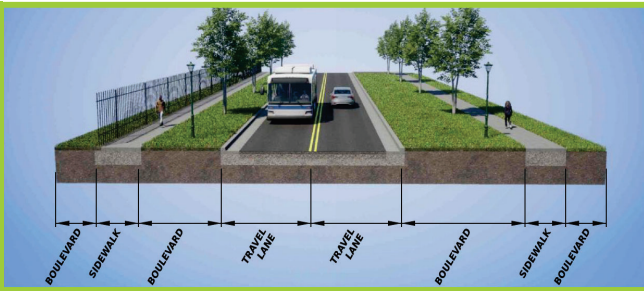
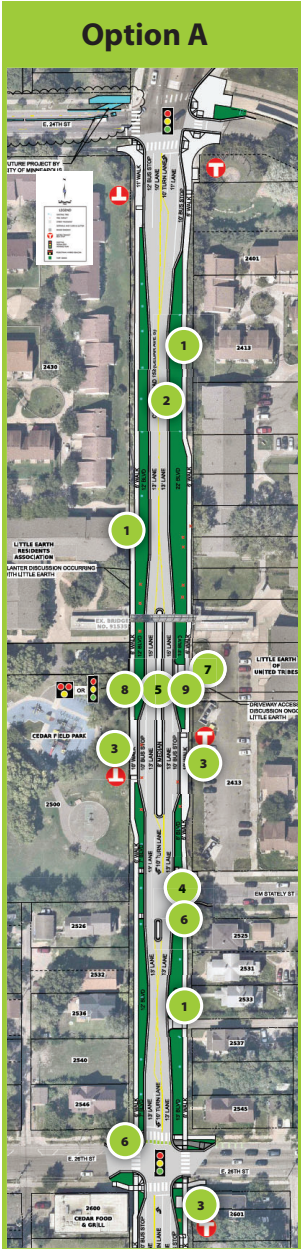
Section of Cedar Avenue looking north

As we move to reconstruct Cedar Avenue, the following factors are informing our decision:

- Spaces for greening are limited
- The bridge at Little Earth will remain as is
- Lighting will be added throughout the corridor
- Parking is available south of 26th Street



# 24th Street to 26th Street



## Shared features

1. Wider boulevards allows greening and tree presentation
2. Narrowed street widths encourage slower travel speeds
3. Bus pull outs to improve safety
4. Raised crossing to improve safety for people walking and rolling
5. Median refuges for people walking across Cedar Avenue
6. Intersection bump outs for people walking and rolling
7. Little Earth entrance right-in right-out to improve safety
8. Signalized crossing at Little Earth (see HAWK vs. traditional crossing board)
9. Crossing location at Little Earth (see HAWK vs traditional crossing board)

## Differences

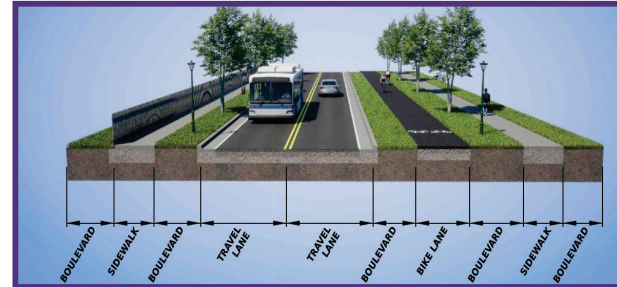
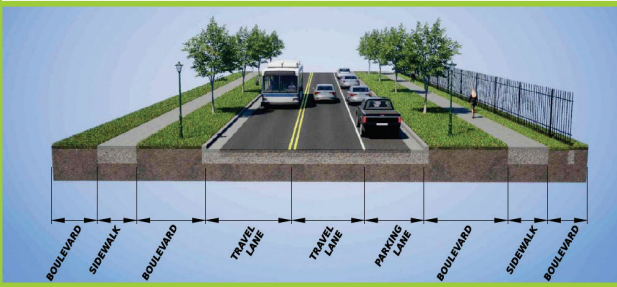
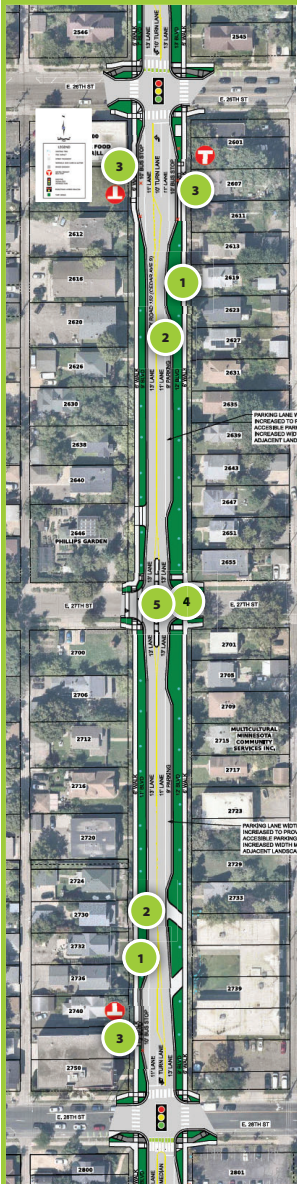
**Option A:** Maximized green space (no bikeway), preserves more existing trees

**Option B:** Increased green space with bikeway, preserves fewer existing trees

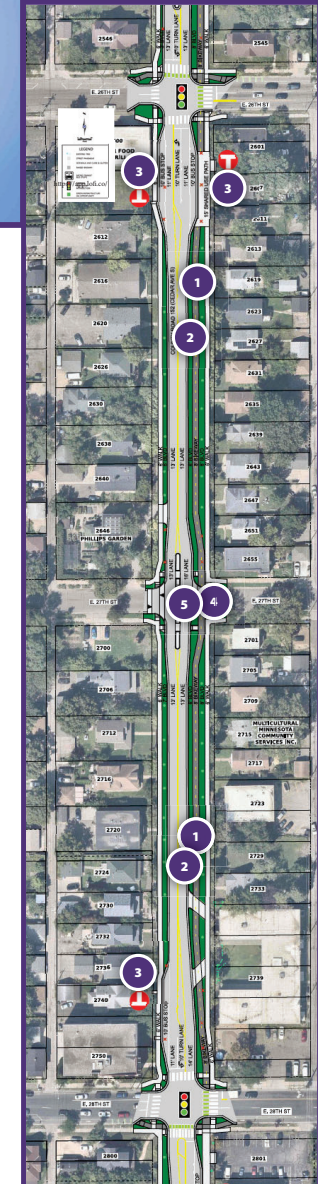
## Comments

# 26th Street to 28th Street

## Option A



## Option B



### Shared features

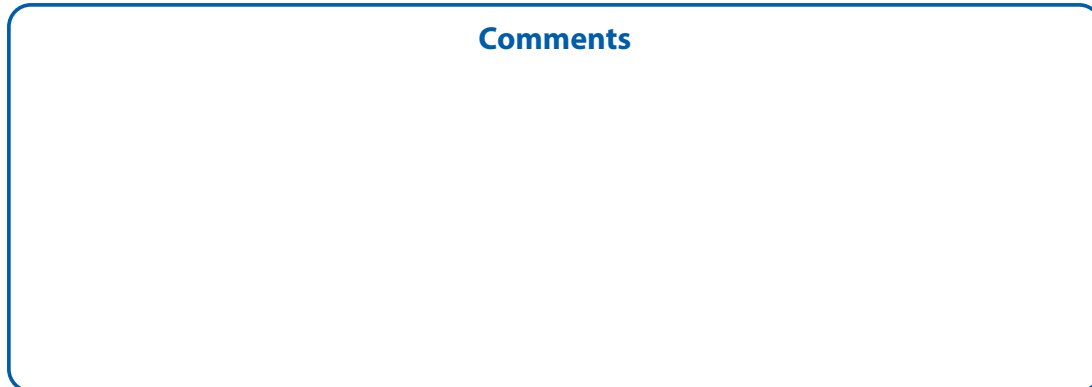
1. Wider boulevards allows greening and tree presentation
2. Narrowed street widths encourage slower travel speeds
3. Bus pull outs to improve safety
4. Raised crossing to improve safety for people walking and rolling
5. 27th Street right-in right-out to improve safety

### Differences

**Option A:** Maximized green space (no bikeway), preserves more existing trees

**Option B:** Increased green space with bikeway, preserves fewer existing trees

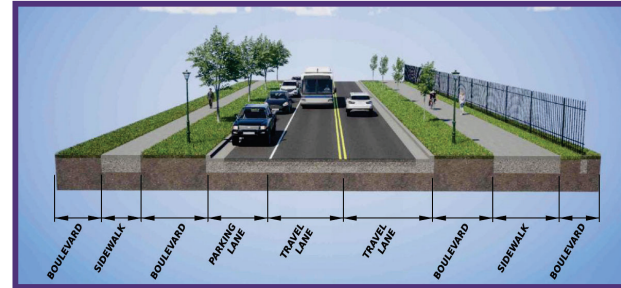
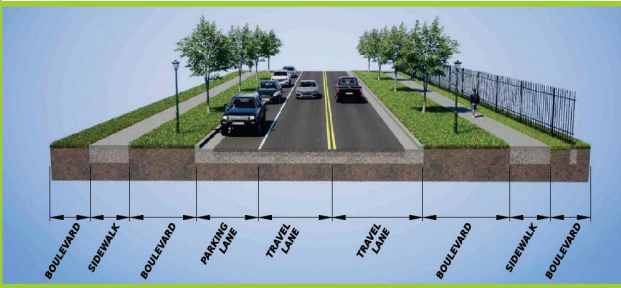
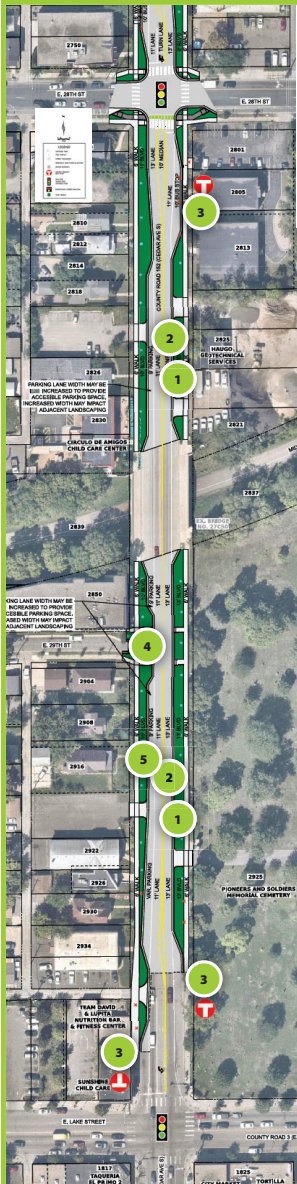
### Comments



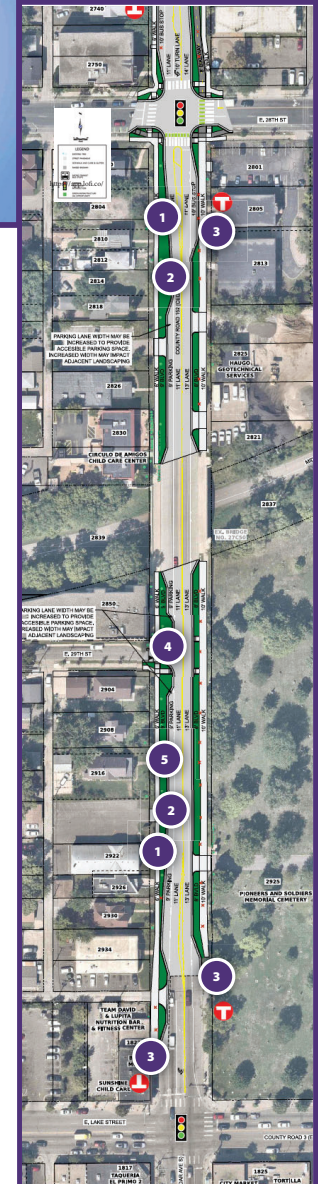


# 28th Street to Lake Street

## Option A



## Option B



### Shared features

1. Wider boulevards allows greening and tree presentation
2. Narrowed street widths encourage slower travel speeds
3. Bus pull outs to improve safety
4. Raised crossing to improve safety for people walking and rolling
5. Parking is included on the east side for both designs

### Differences

**Option A:** Maximized green space (no bikeway), preserves more existing trees

**Option B:** Increased green space with east side shared trail, preserves fewer existing trees

### Comments

