



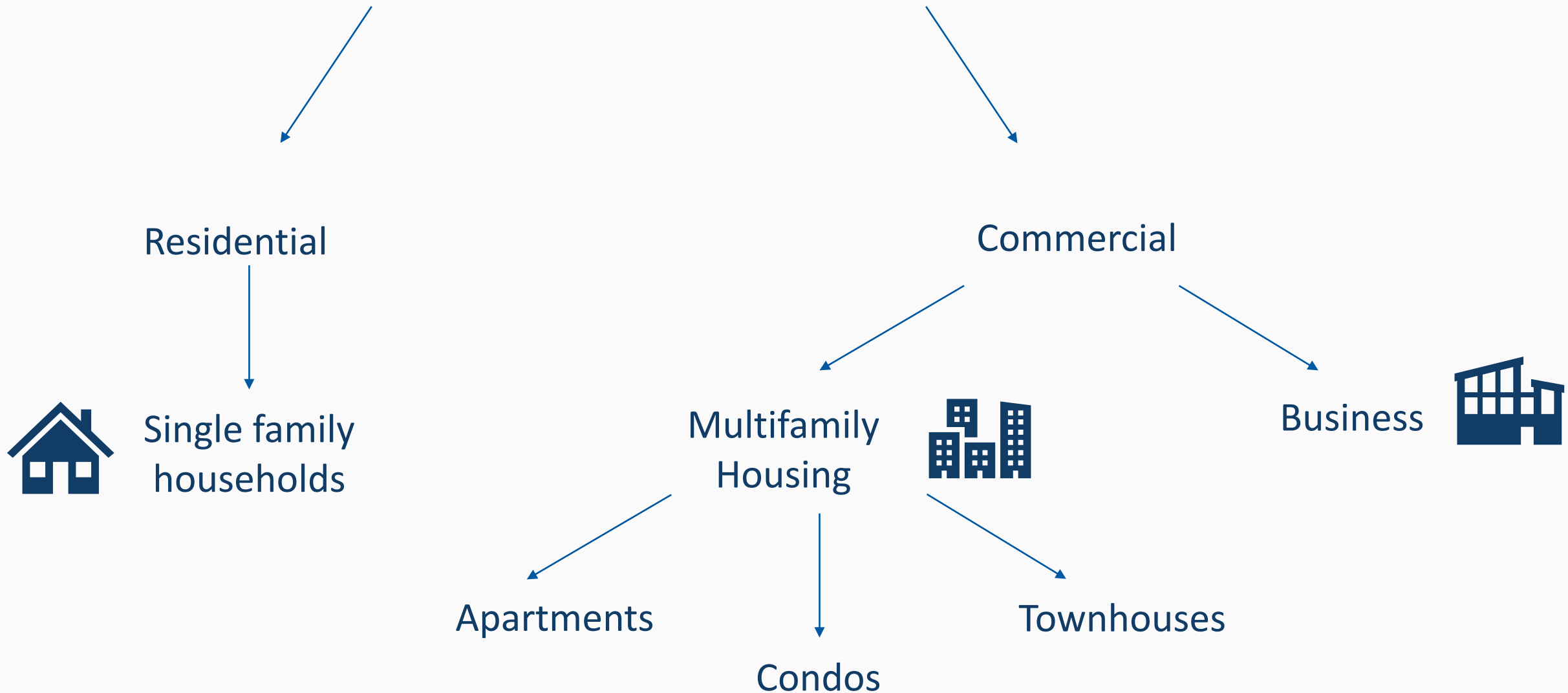
# Commercial Recycling and Organics: Multi-family and Ord 13

Hennepin County Environment and Energy

Lianna Goldstein & Josh Suckow  
Waste Reduction and Recycling

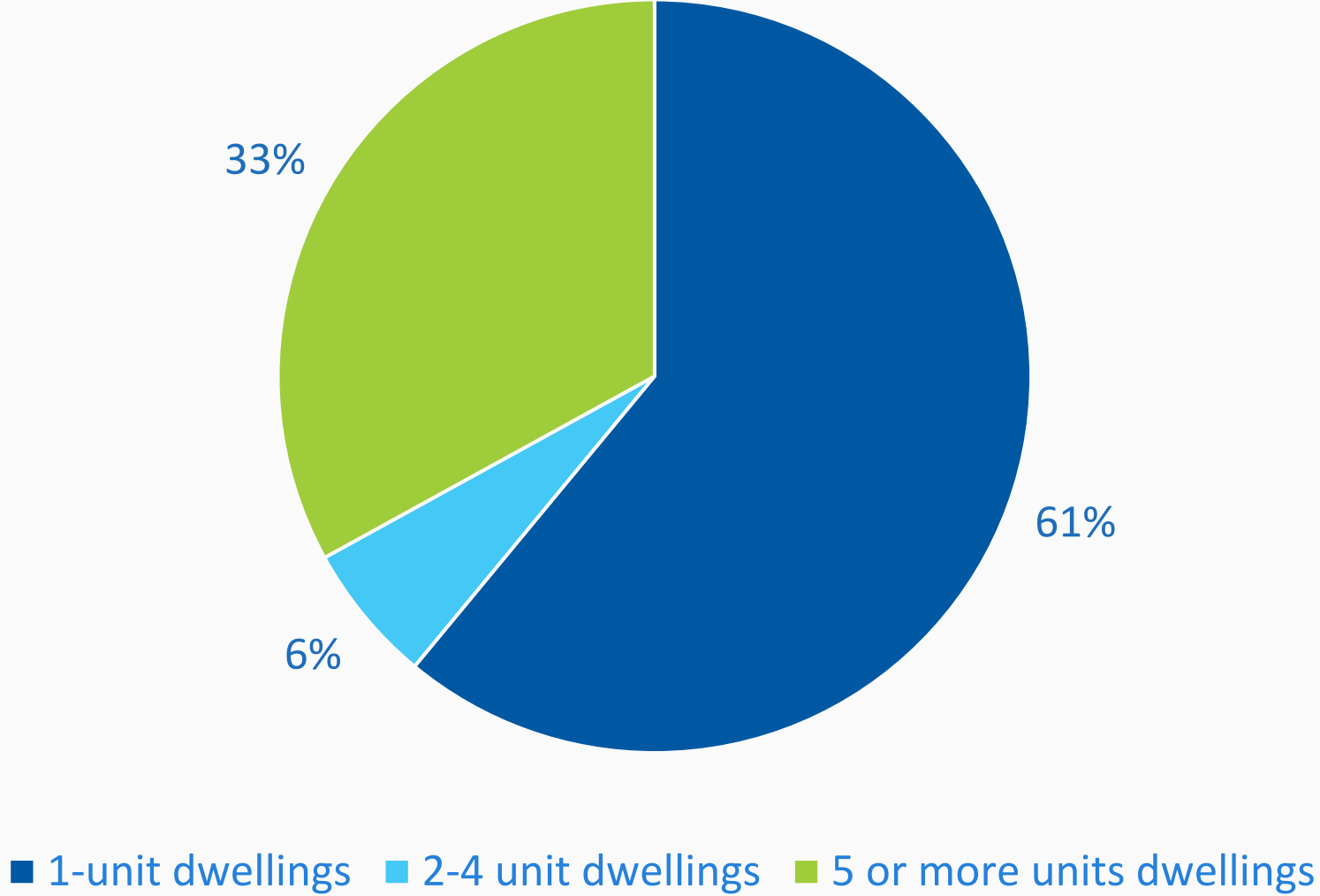


# Recycling in Hennepin County





# Hennepin County Housing Characteristics





# Challenges

- Limited space inside and outside
- Tenant & property manager turnover
- Communication and language barriers
- Increased waste at move-in & move-out
- Organics recycling



# Best Management Practices: Recycling Set-up

- Co-locate (pair)
- Convenience
- Capacity
- Color code
- Communicate

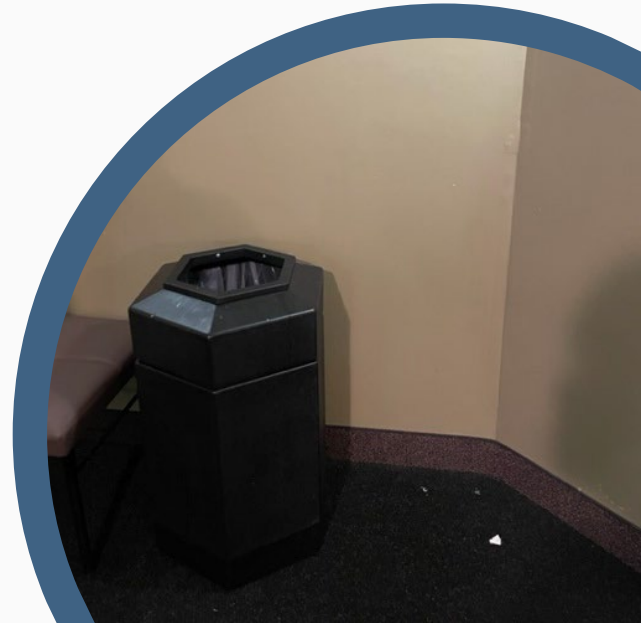






What we usually see

Hennepin County



# But some properties... doing great!





# It's your turn: evaluate 5 scenarios

- Real multi-family building examples!
  - What's the problem?
  - What would you do to improve it?
- Use best management practices!
- Type your answers in the chat



# Scenario 1: Common Areas



# Scenario 2: Mail room



# Scenario 3a: recycling and trash chute





# Scenario 3a: recycling and trash chute



# Scenario 3a: recycling and trash chute



# Scenario 3b: trash chute only



# Scenario 3b: trash chute only



**Recycle**

**Paper**

- Mail, office and school papers
- Magazines and catalogs
- Newspapers and inserts
- Phone books

**Boxes:**

- Cardboard
- Cereal and cracker boxes
- Shoe boxes, gift boxes and electronics boxes
- Toothpaste, medication and other toiletry boxes

**Metal**

- Food and beverage cans

**Glass**

- Food and beverage bottles and jars

**Plastic**

**Bottles and jugs**

- Water, soda and juice bottles
- Milk and juice jugs
- Ketchup and salad dressing bottles
- Dishwashing liquid bottles and detergent jugs
- Shampoos, soap and lotion bottles

**Cups and containers**

- Yogurt, pudding and fruit cups
- Clear disposable cups and bowls
- Margarine, cottage cheese, and other containers
- Produce, deli and take out containers

**Packaging**

- Clear, rigid packaging from toys and electronics

**Cartons**

- Milk cartons
- Juice boxes
- Soup, broth and wine cartons

**Preparation:**

- Empty and rinse bottles, cans and containers.
- It's okay to leave caps and lids on.
- Flatten boxes.

**Not accepted:** plastic bags, film, and wrap • plastic foam (Styrofoam™) • food waste • paper cups and plates • glass dishes, drinking glasses, window glass, and ceramics • garbage • containers that held hazardous products

**Our building recycles**

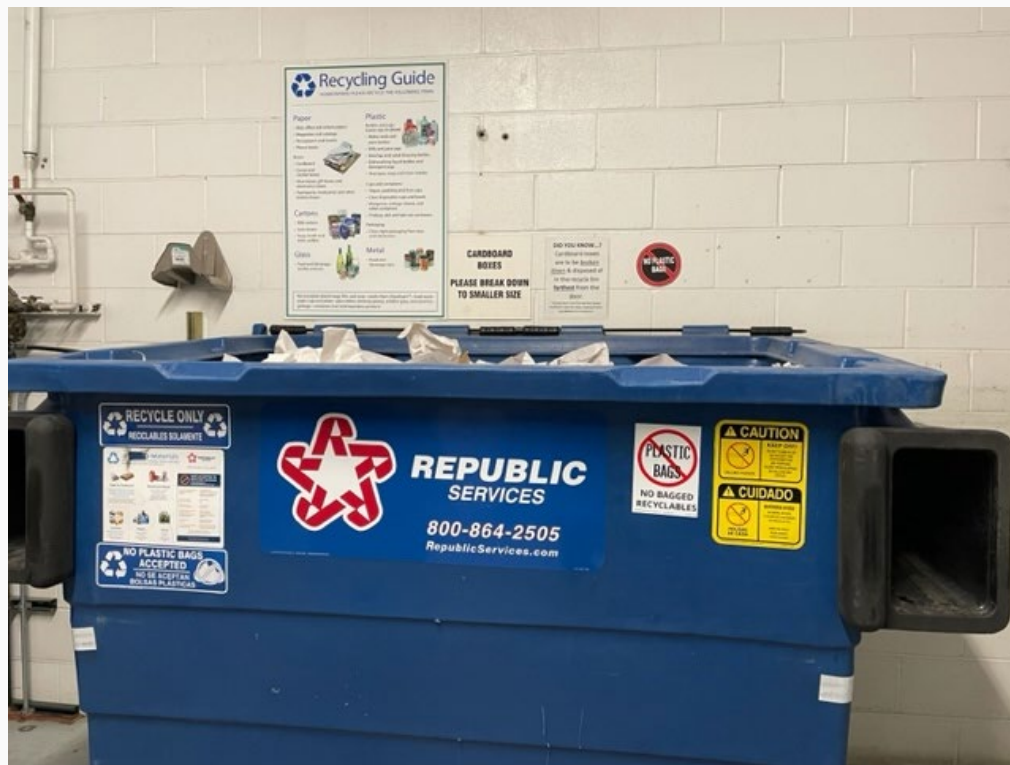
Containers are located:

**Questions?**  
Contact your building manager or visit [hennepin.org/department/recycle](http://hennepin.org/department/recycle)





# Scenario 4: recycling in the garage



# Scenario 5: Outdoor waste collection





# Bulky/hard to dispose of items



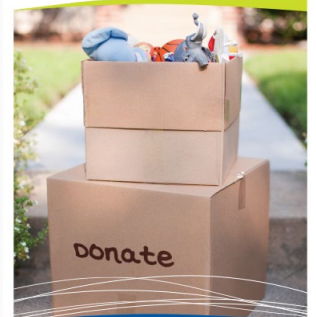
## Curbside mattress recycling



Curbside pickup service is available to all Hennepin County residents as well as condo and apartment building managers.



## Donation opportunities



Donating usable items to charitable organizations is a great way to help your community. You'll also save money and keep items out of the landfill. Find donation opportunities in Hennepin County.



# Multi-family Grant Program

---

- Bins and compostable bags
- New hauling service for recycling and organics
- Construction of waste enclosures/chutes
- Education and training for adding a new service (recycling or organics)





# Going above and beyond

- Applewood Pointe of Eden Prairie
  - 99 units, condo cooperative
  - Start organics
- Edition Apartments
  - 193 units, apartment renters
  - Start organics



# www.hennepin.us/apartmentrecycling

HENNEPIN COUNTY  
MINNESOTA

[Subscribe](#) [Jobs](#) [Employees](#) [Media](#) [Contact](#)

[Residents](#) ▾

[Business](#) ▾

[Your government](#) ▾

[Online services](#) ▾

[Hennepin County](#) > [Recycling and hazardous waste](#) > Multifamily recycling: Apartments, condos and townhomes

## Multifamily recycling: Apartments, condos and townhomes

Recycling is an easy and convenient way to reduce waste and protect the environment. Property owners and associations are required to provide residents with the opportunity to recycle. Recycling service should be equal in capacity to trash service to capture all of the recyclable material generated by residents.

If you are a resident of an apartment building, condo or townhouse, and

Apartment recycling program  
coordinator  
[apartmentrecycling@hennepin.us](mailto:apartmentrecycling@hennepin.us)  
Phone: 612-543-9298

### Order free recycling resources

Free resources are available to Hennepin County residents to improve recycling in apartments, condos, and townhome associations. [See what's available and order free resources.](#)

[Open all](#)

+ Recycling requirements

+ Grants, resources and assistance

+ Apply to be an Apartment Recycling Champion

+ Improving recycling and preventing waste

+ Organics recycling

+ Mattresses, electronics, hazardous waste, and other items

+ Recycling guide in multiple languages

[Open all](#)





# Ordinance 13

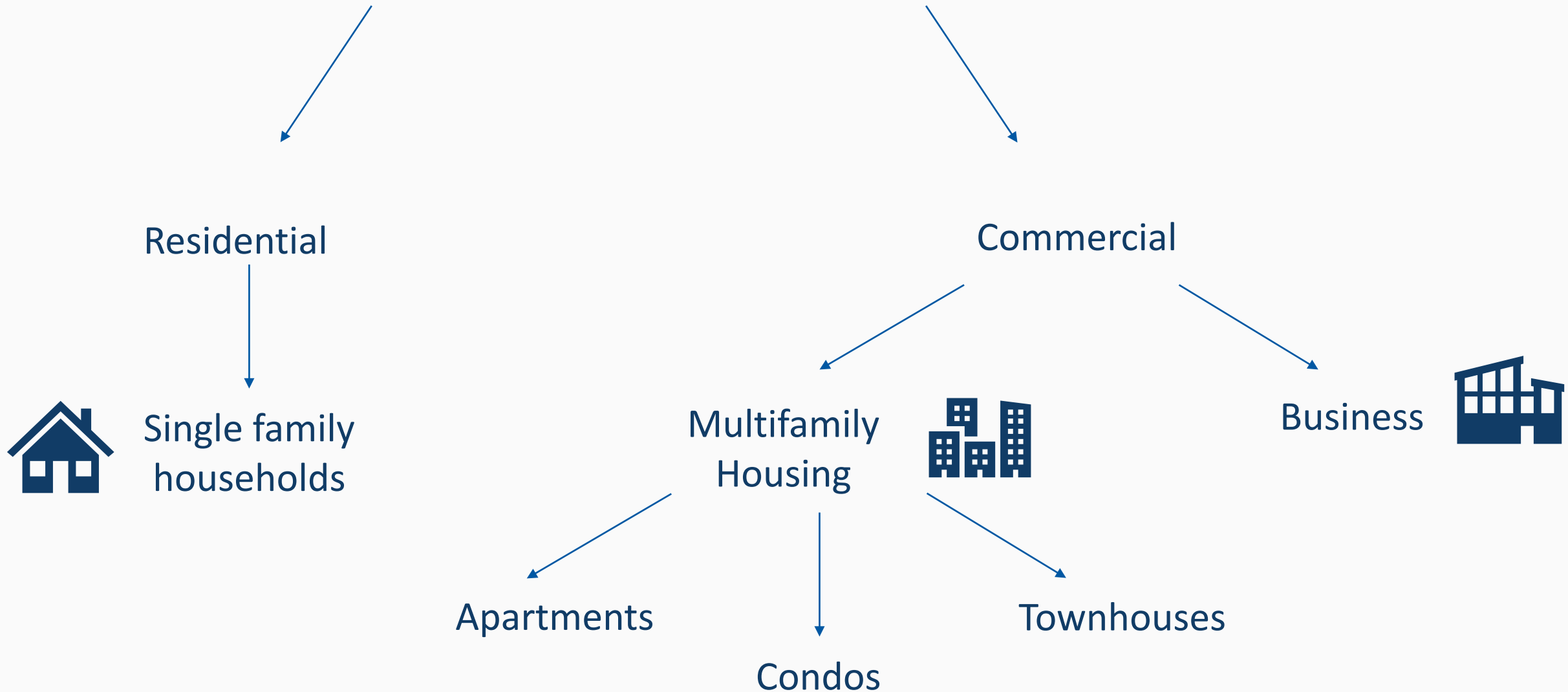
Joshua Suckow – Hennepin County Waste Reduction and Recycling Unit



# Ordinance 13 Information

- What is Ordinance 13?
  - An ordinance that:
    - Only applies to Hennepin County.
    - Builds upon a state rule: certain businesses must recycle  $\geq 3$  materials (Metro counties only).
    - Requires certain businesses to divert food waste.
    - Requires many businesses to enhance their recycling/organics programs
    - And More!

# Recycling in Hennepin County





# Ordinance 13: Multifamily Housing



# Ordinance 13- effective Jan 1, 2020

- Annual, comprehensive education (Communicate)
- Accessible bins and containers (Convenience)
- Clear and consistent labels (Color Code, Communicate)
- Adequate service levels (Capacity)



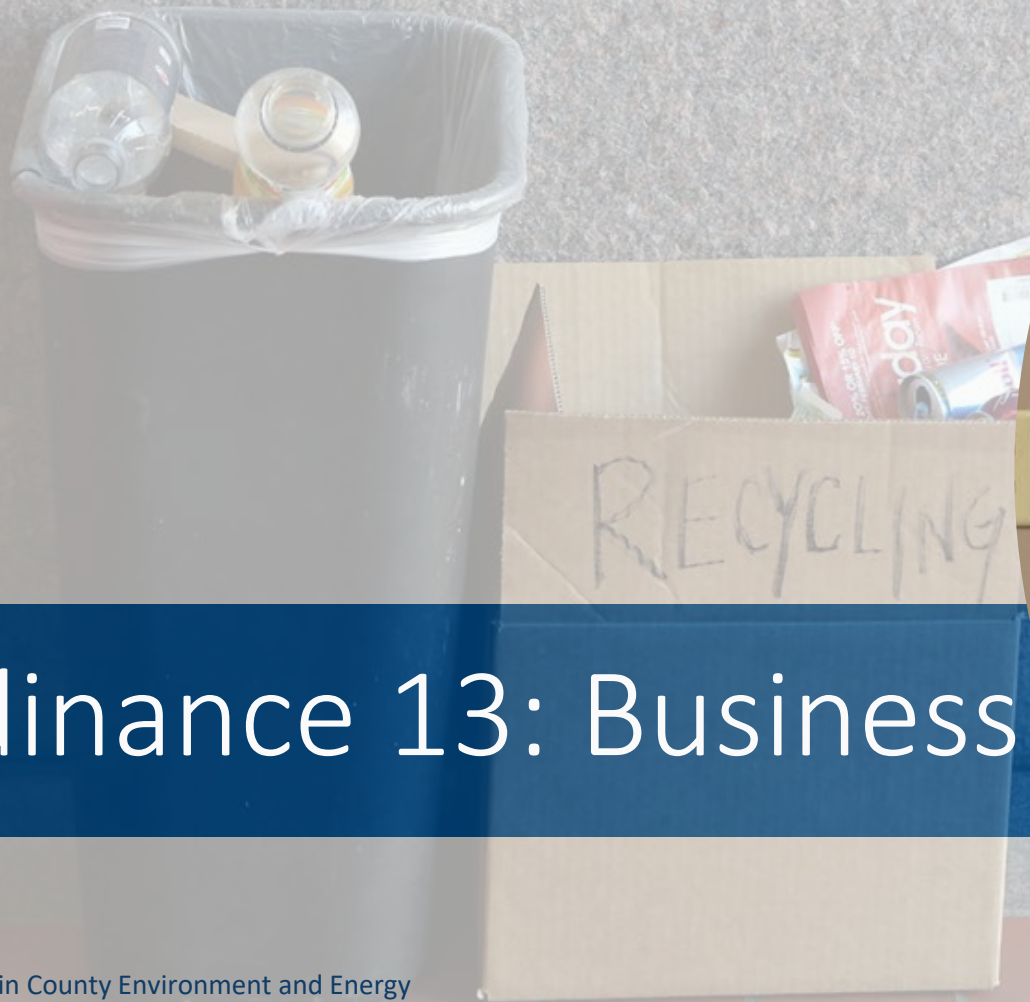


# Scenario 1: Common Areas





# Ordinance 13: Business





# Intro to the commercial business sector:

- Approximately 45,000 businesses in Hennepin County
- Businesses are responsible for half of the waste in the County
  - 3/4 of this is recyclable or compostable
- Home to several headquarters (Target, General Mills, Best Buy, Dairy Queen, more)

# Ordinance 13- effective Jan 1, 2020

- Recyclables collection requirement
  - Incorporates state law and adds labeling and service requirements
- Organic material collection requirement
  - Requires certain businesses to implement a collection program to divert food and food scraps back of house

# What businesses are required to divert food waste from Trash?

1. If a business generates 8 cubic yards or 1 ton of trash per week

AND

2. The business falls into one of the following sectors:

- Restaurants
- Grocery Stores
- Food Wholesalers  
Distributors, Manufacturers
- Hotels
- Hospitals
- Sports Venues
- Caterers
- Golf Clubs and Country Clubs
- Nursing and Residential Care  
Facilities
- Office Buildings with Dining Services
- Farmers Markets
- Food Shelves and Food Banks
- Colleges, Universities with Dining  
Services
- Shopping Centers
- Airports
- Rental Kitchens/Shared Kitchens



# How to determine trash generation:

- Look for sticker indicating dumpster size
- Contact waste hauler or look at a copy of latest bill



# How do businesses comply with the requirement?

1. Have food waste recycling service in place
2. Provide food waste collection bins in back-of-house and properly label them
3. Separate food waste from trash in back-of-house operations
4. Provide education and train employees annually
5. Must Self-Audit and Self-Report as necessary.





# Typical business challenges

- Outdated recycling programs
- Insufficient # bins
- Improper/No labeling
- Haulers want NO plastic bags – Fines/Fees
- Confusion about packaging
- Impacts of COVID-19 – stopped service
- Staff shortages/turnover
- Space/Location of Dumpsters



# Disincentivizing trash – All Commercial

- 38.5% tax on trash
  - 21.5% to Hennepin
  - 17% to the state
- The cost to dispose of a ton of trash is more than a ton of recycling or organics
- Applies to Commercial Sector















# How can you help?

- Recognize that as a customer, you hold purchasing power.
- Offer guidance if you work in a regulated business.
- Look for ways to reduce or eliminate waste at work.
- Be patient, recognize that this is a big change for some businesses and regulation takes time.





# Recycling at work

## Paper

- Paper (all kinds, all colors)
- Mail and envelopes
- Magazines and catalogs
- Packing paper
- File folders
- Paper tablet backings
- Newspapers and inserts
- Phone books
- Soft cover books
- Appliances and electronics boxes
- Cardboard boxes



## Plastic

- Bottles and jugs**
- Lids and caps on
- Cups and containers (please empty):**
- Yogurt, pudding and fruit cups
- Iced coffee/tea cups
- Baked goods, deli and take-out containers
- Packaging:**
- Clear, rigid packaging from electronics, supplies, etc.



## Cardboard



## Glass

- Food and beverage bottles and jars



## Metal



# Signs and stickers

# Trainings



# Business Recycling Grant Program

- Bin and compostable bag grants
- Waste prevention grants





# Grantee Success



	Monthly Weight Before	Monthly Weight After
Trash	11,440	1,536
Recycling	10,036	6,691
Organics		2,860
<b>Totals</b>	<b>21,476</b>	<b>11,087</b>

[Hennepin County](#) > [Recycling and hazardous waste](#) > [Business recycling](#)

## Business recycling

The commercial sector generates more than half of the total waste in Hennepin County, and nearly two-thirds of the waste created at businesses and non-profits is recyclable. A strong recycling program conserves natural resources, reduces greenhouse gas emissions, can help your bottom line and demonstrates your organization's commitment to sustainability and the community.

Hennepin County offers grants, signage, and technical assistance to help businesses reduce waste and improve recycling. Information on how to comply with Ordinance 13 is posted below.

The following information refers to non-hazardous waste. For information on managing hazardous items from businesses, like electronics, fluorescent bulbs and other chemicals, [visit the county's page on managing and disposing of hazardous waste](#).

[Request assistance for business recycling](#)

Business recycling program specialist  
[businessrecycling@hennepin.us](mailto:businessrecycling@hennepin.us)  
Phone: 612-543-9298

[Open all](#)

+ Recycling requirements for businesses

+ Assistance, signs, and grants

+ Best practices and training resources

+ Prevent waste

+ Organics recycling and wasted food

[Hennepin County](#) > [Recycling and hazardous waste](#) > [Organics recycling for businesses and organizations](#)

## Organics recycling for businesses and organizations

Implementing organics recycling programs allows businesses, organizations and schools to expand their recycling programs, ease their burden on the environment, reduce taxes waste disposal, and show customers that they care about the community.

Businesses, organizations and schools have three main options for recycling organic waste:

- Organics recycling for composting: food waste, unlined paper and certified compostable foodservice ware is recycled into compost, a valuable soil amendment
- Food to people: edible food is donated to organizations that help people in need
- Food to animals: food scraps are processed into feed for livestock

Plan your new program with our [guide on how to start organics recycling at work \(DOCX\)](#).

Contact  
[businessrecycling@hennepin.us](mailto:businessrecycling@hennepin.us)  
Phone: 612-543-9298

[Open all](#)

+ Impact of COVID-19 on compost sites and the need to compost the right things

+ Food waste recycling requirements for businesses

+ Food to people



# Contact us:



Multifamily Recycling: [apartmentrecycling@hennepin.us](mailto:apartmentrecycling@hennepin.us)

Business Recycling: [businessrecycling@hennepin.us](mailto:businessrecycling@hennepin.us)