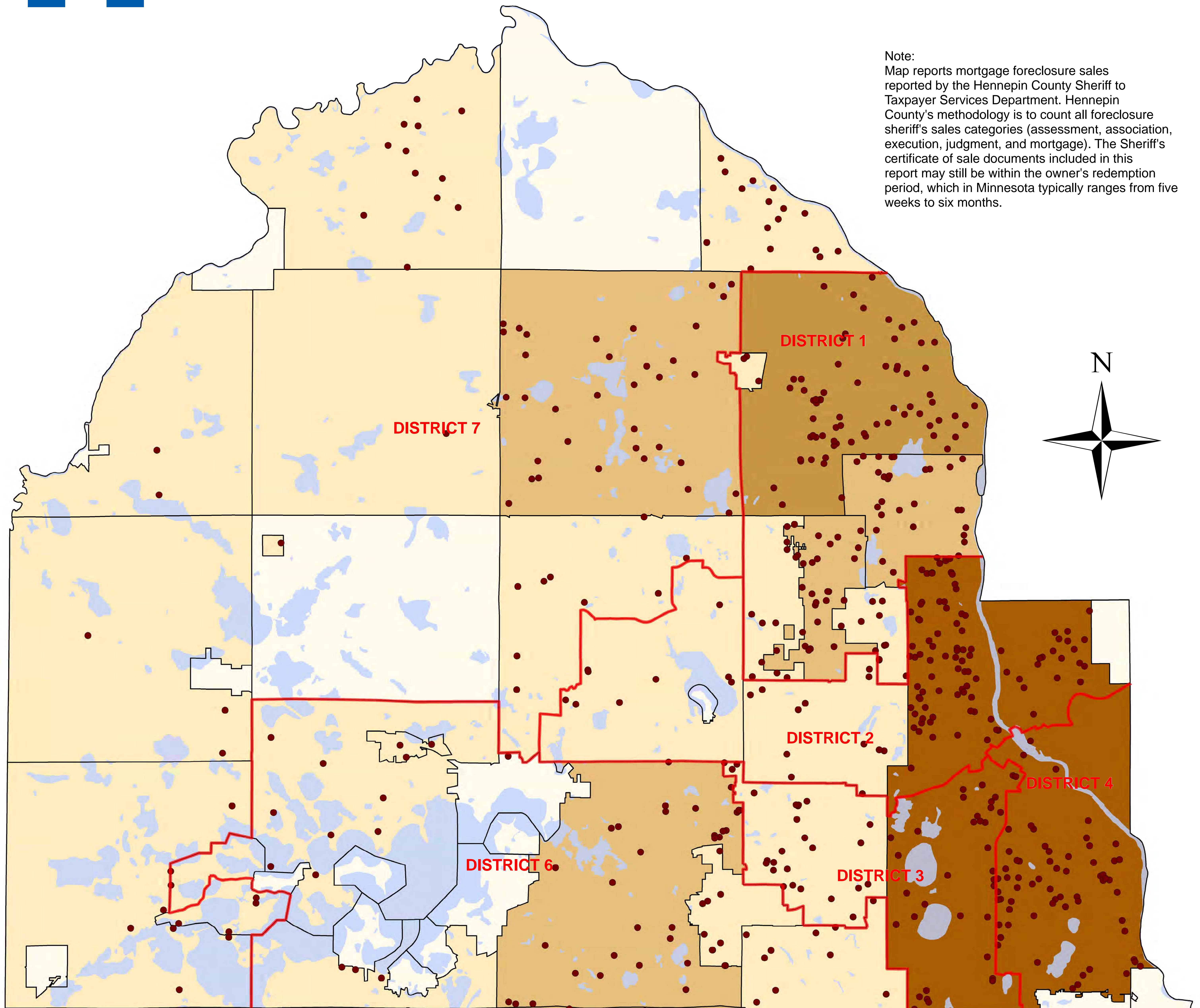




# Distribution of Foreclosures Through September 2017 Hennepin County

Note:  
Map reports mortgage foreclosure sales reported by the Hennepin County Sheriff to Taxpayer Services Department. Hennepin County's methodology is to count all foreclosure sheriff's sales categories (assessment, association, execution, judgment, and mortgage). The Sheriff's certificate of sale documents included in this report may still be within the owner's redemption period, which in Minnesota typically ranges from five weeks to six months.



● Foreclosures (Total Records: 651)

— Commissioner District Boundary

**Count of Foreclosures**  
JAN - SEPT 2017

Count of Foreclosures	Commissioner District	Total
0	1	150
1-20	2	116
21-50	3	61
68	4	63
193	5	81
	6	86
	7	92



Data Source:  
September 2017 Sales Extract, Hennepin County Sheriff's Office  
Total Records: 651  
Records Successfully Geolocated: 650 (100%)  
Records Unsuccessfully Geolocated: 1 (1%)

Map Produced by Hennepin County  
RRES Department  
Survey Division  
October 13, 2017