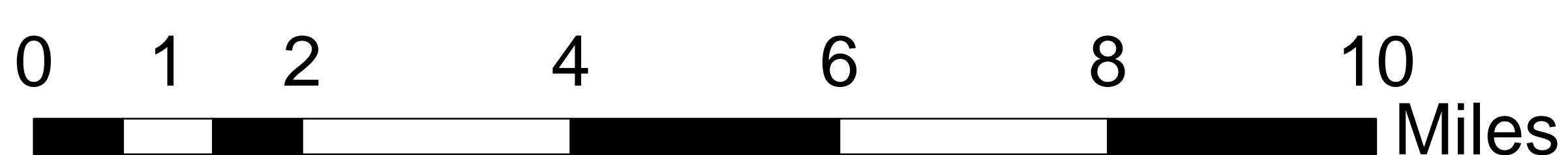
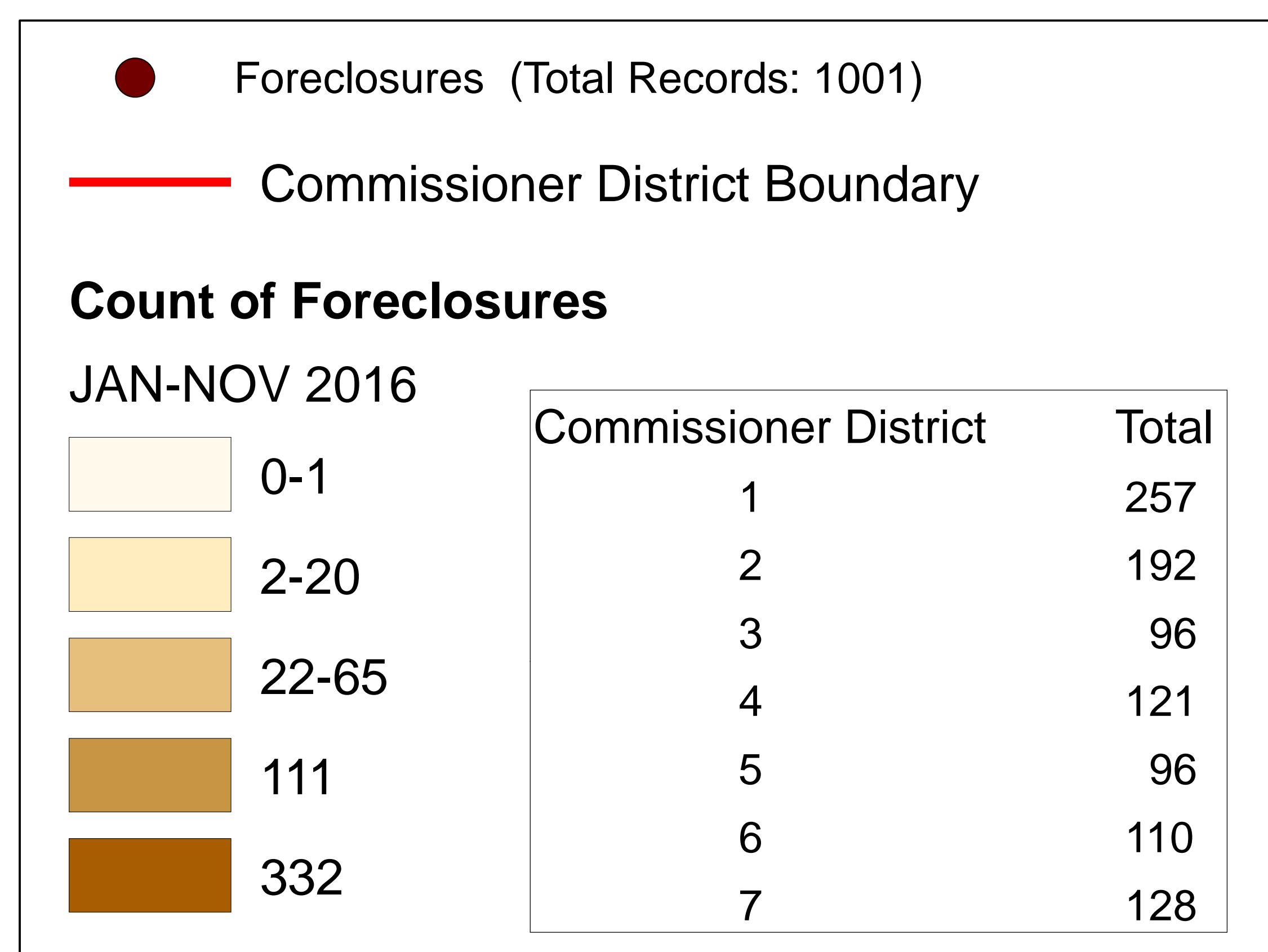
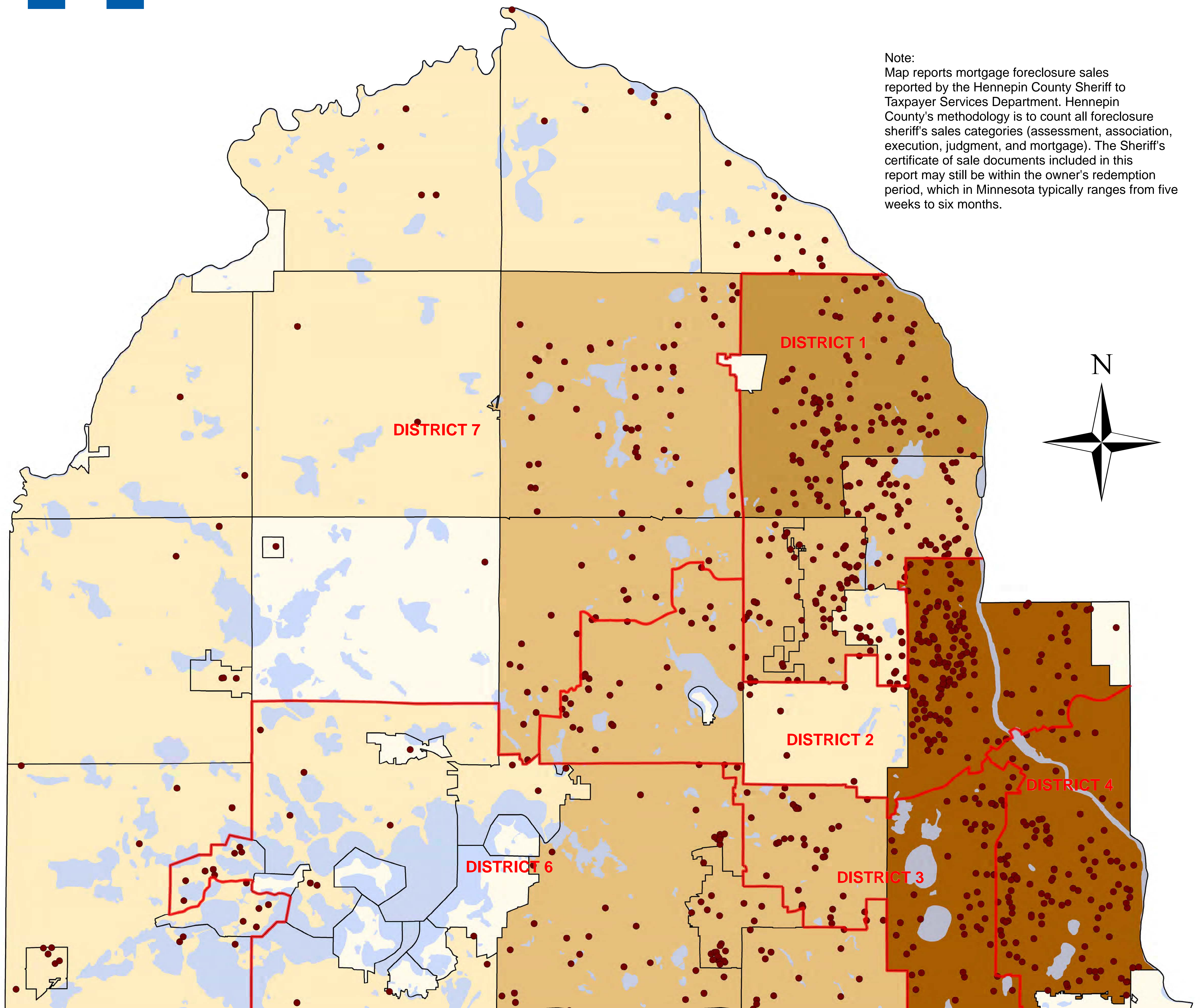




Distribution of Foreclosures Through November 2016 Hennepin County

Note:
Map reports mortgage foreclosure sales reported by the Hennepin County Sheriff to Taxpayer Services Department. Hennepin County's methodology is to count all foreclosure sheriff's sales categories (assessment, association, execution, judgment, and mortgage). The Sheriff's certificate of sale documents included in this report may still be within the owner's redemption period, which in Minnesota typically ranges from five weeks to six months.



Data Source:
November 2016 Sales Extract, Hennepin County Sheriff's Office
Total Records: 1001
Records Successfully Geolocated: 1000 (100%)
Records Unsuccessfully Geolocated: 1 (0%)

Map Produced by Hennepin County
R&RE Services Department
Survey Division
December 15, 2016