

Homewood planting outreach report

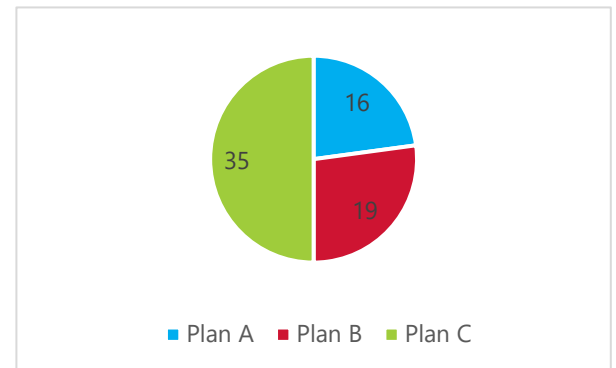
Determining the best planting plan option

Three planting proposals were developed in response to community input gathered in March. Plan options were developed by Northside Safety NET interns and county foresters.

On April 5 and 12 2023, Hennepin County foresters and Northside Safety NET interns canvassed an area of 172 homes near the Homewood planting site to gather information from residents about which of the three plans they preferred. Residents also shared their opinions and accessed a survey through e-newsletter outreach, social media posts, and by a community member who talked with neighbors.

Resident preferences for planting plan options

Feedback was gathered from 70 community members about planting plan options. About half of respondents provided their feedback via an online survey, with the other half providing feedback in person or via a community member supporting outreach. Plan C was the clear favorite of the neighborhood and will be the plan that is followed at the upcoming planting on Saturday, May 20.



Compliments

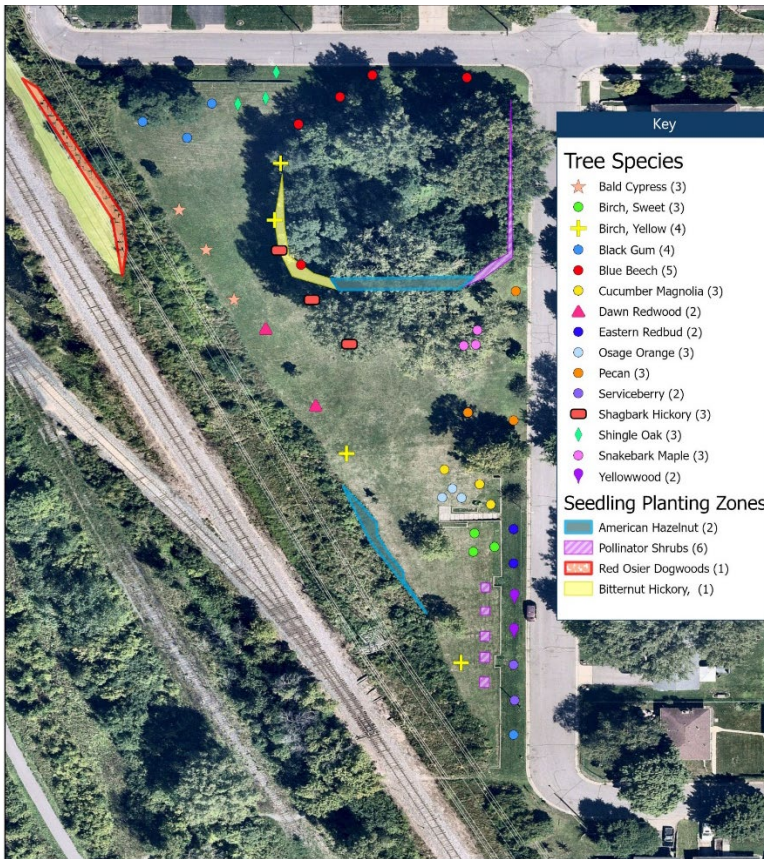
- People are excited about the variety of trees being planted.
- Some residents noted the importance of pollinator shrubs to create habitat for pollinators.
- Many residents expressed gratitude that we were performing more outreach in response to the concerns voiced towards the original proposal.

Concerns

- Some residents continue to raise concerns about disruptive wildlife like squirrels, safety regarding sightlines, and the need to retain open space at the site for enjoyment and play. The residents' concerns persist despite changes made to plan options to mitigate these issues.
- A few residents expressed disappointment at this use of government funds.
- Concerns were raised about the prudence of planting species that may have a higher mortality rate compared to more tried and true species. These species were selected to increase climate resiliency of the planting.

Planting plan details

Plan C has 45 full-sized trees, 20 less than the original proposal of 65. Keep in mind that 10 to 20% of trees don't survive in a typical bareroot tree planting, and a planting with southern range species like this one,. The plan was developed to include enough trees to account for up to 30% not surviving to next year. Open space and sight lines are improved. The size of the fenced plots of pollinator shrubs has been reduced to 5 feet by 5 feet. This fencing will be temporary and will protect small pollinator seedlings from being predated on by deer and rabbits until they are established. The seedling planting zones will be small 1-to-2-foot seedlings interplanted in natural areas.



Disclaimer: This map (i) is furnished "AS IS" with no representation as to completeness or accuracy; (ii) is furnished with no warranty of any kind; and (iii) is not suitable for legal, engineering or surveying purposes. Hennepin County shall not be liable for any damage, injury or loss resulting from this map.

Publication date: 3/30/2023

Data sources (if applicable):

