

North Arm Public Access Redesign



Welcome – Jill Brown.

Presenters:

Hennepin County

- Nguyen Hoang GUY
- Kristopher Guentzel
- Tony Brough

IMO Consulting Group

- Ismael Martinez
- Robert Russek
- David Juliff



Learn more and sign up for updates: hennepin.us/north-arm



North Arm Public Access Aerial Photo



North Arm Public Access Redesign



Hennepin County is redesigning this water access to repair important infrastructure and improve access for all users.



Planned improvements include:

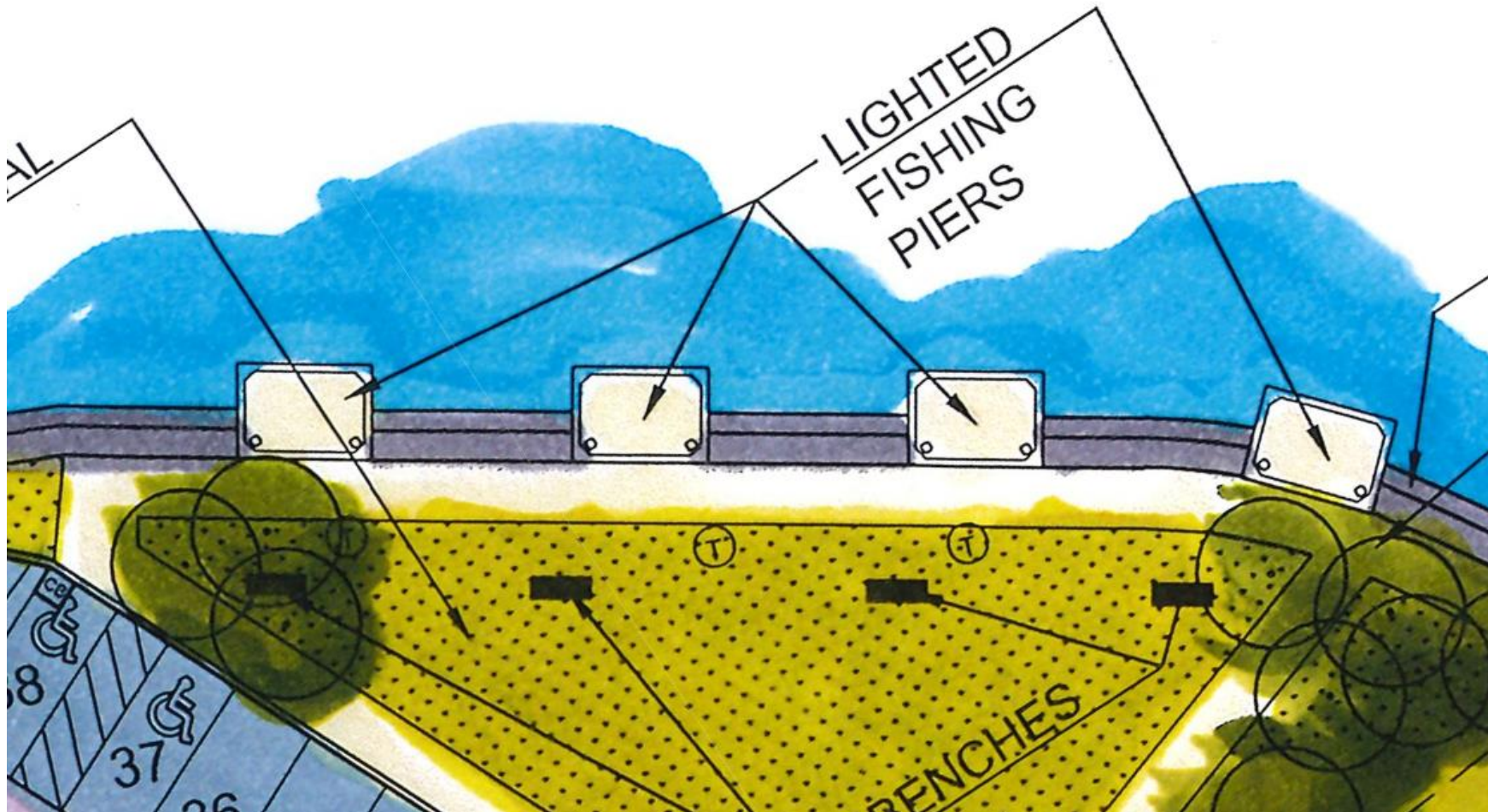
- Improvements for shoreline anglers
- Improve Accessibility for canoes, kayaks, and paddleboards
- Improve safety and efficiency
- Redesigning the stormwater management system and incorporating solar



Learn more and sign up for updates: hennepin.us/north-arm



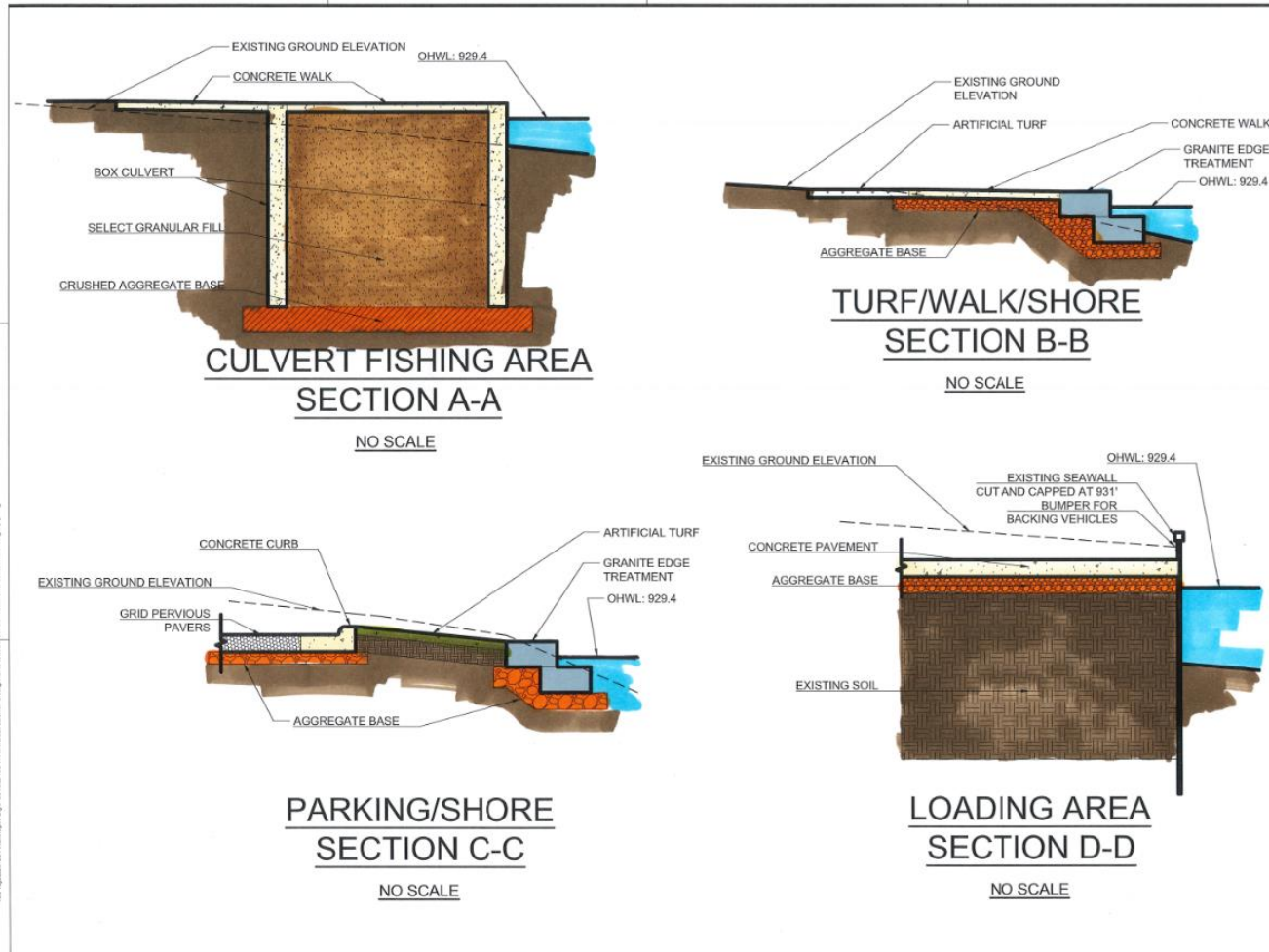
North Arm Public Access Shore Fishing



North Arm Public Access Cross Sections



Jan 16, 2024 - 11:00am
 C:\Projects\2021\Hennepin County\1042024\10-Arm Beach Access\Design\CrossSections\111.dwg



HENNEPIN COUNTY
300 South 6th Street
Minneapolis, MN 55404

LAKE MINNETONKA NORTH ARM PUBLIC ACCESS

LOCATION KEY

ALL CONTRACTORS AND SUBCONTRACTORS SHALL VERIFY ALL DIMENSIONS BY MEASUREMENT AT THE BUILDING AND/OR SITE.

1" = 80'-0" (DRAWN) NOT FOR CONSTRUCTION

DATE: _____ SHEET RECORD: _____

I HEREBY CERTIFY THAT THIS PLAN, SPECIFICATION, OR REPORT WAS PREPARED BY ME OR UNDER MY DIRECT SUPERVISION AND THAT I AM A DULY LICENSED ENGINEER UNDER THE LAWS OF THE STATE OF MINNESOTA.

SIGNATURE: _____
 PRINTED NAME: ROBERT C. RUSSELL
 EXC. NO.: 50005 DATE: JAN 16 2024

IMO Consulting Group
 Suite 100
 12900 Whitewater Drive
 Minnetonka, MN 55343
 CH: 952-446-7898

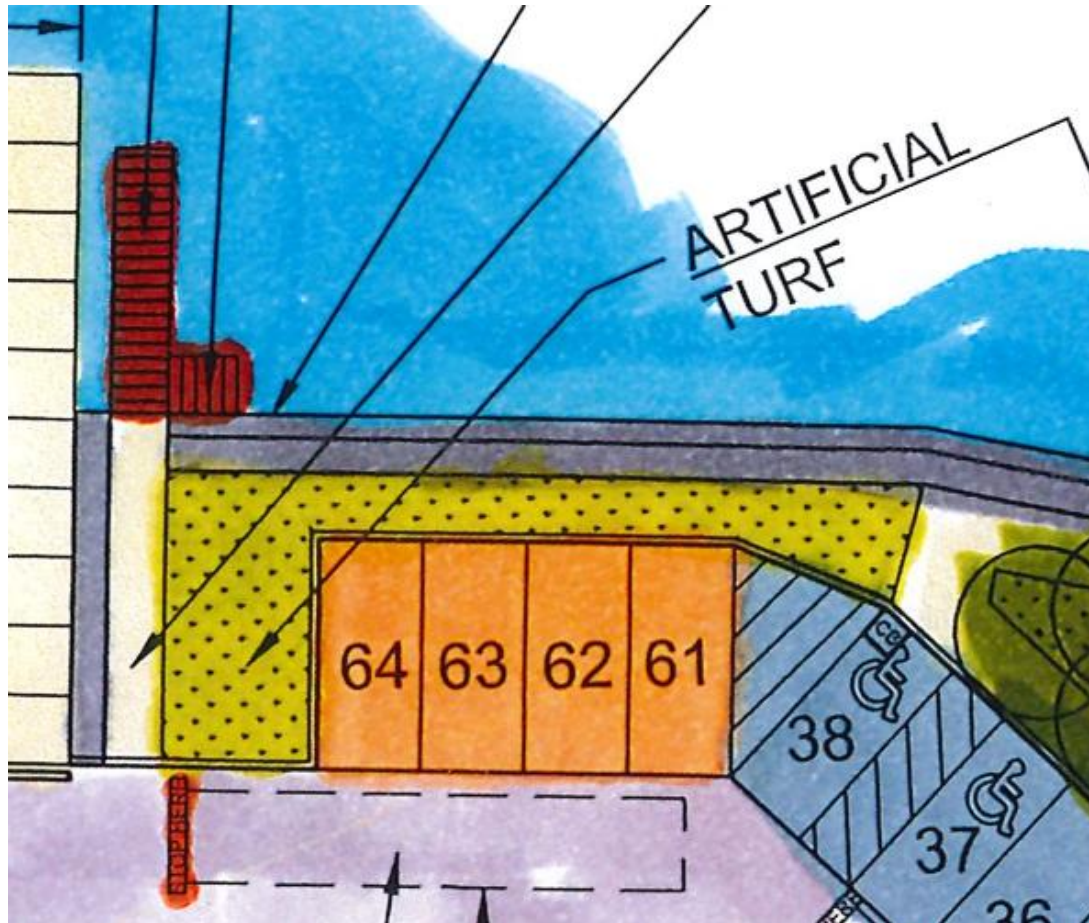
DESIGNED: KSC DRAWN: JRM CHECKED: JSC

SHORE CROSS SECTIONS C101
1/16/2025

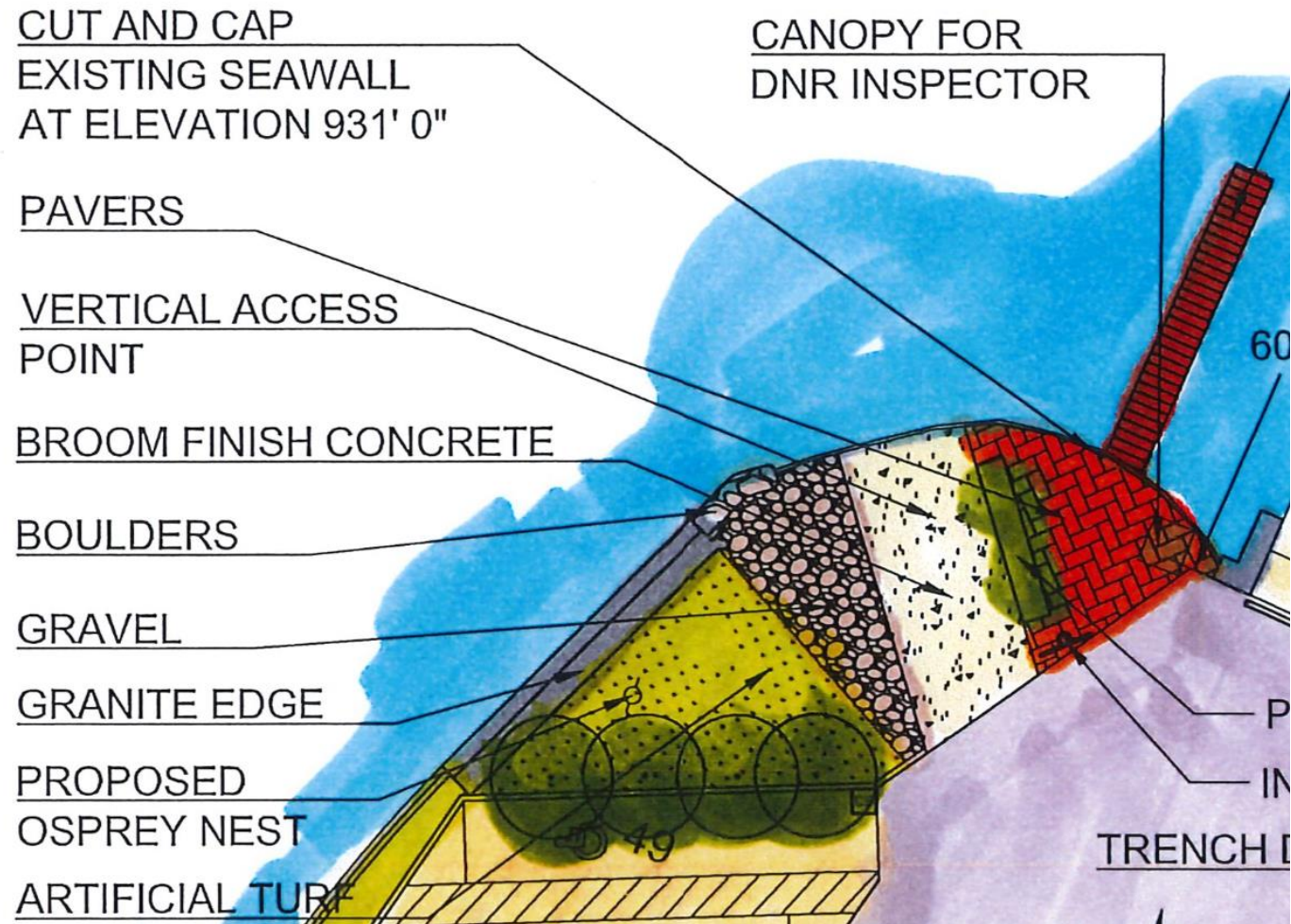
P000
PROJ.NUM



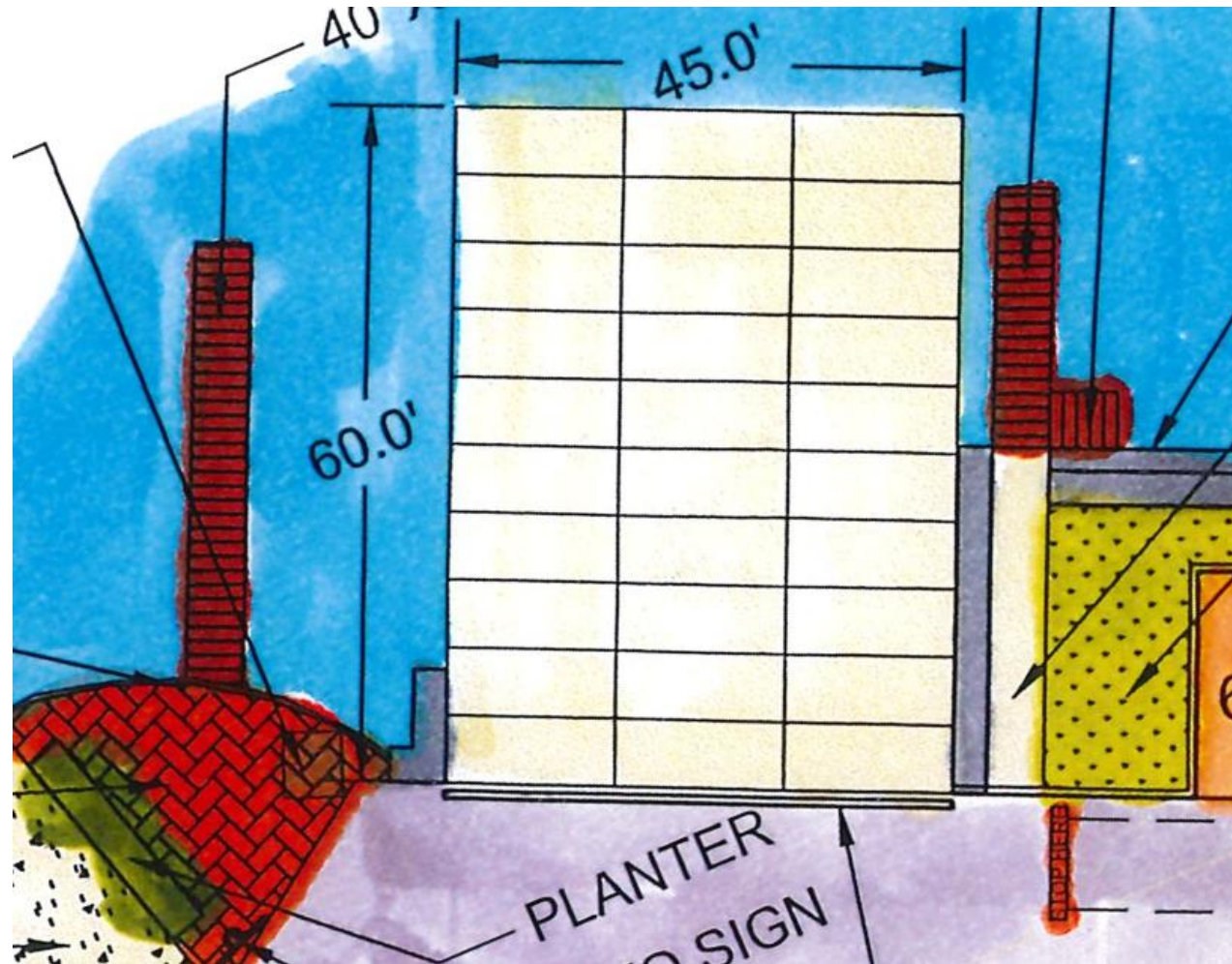
North Arm Public Access Watersports



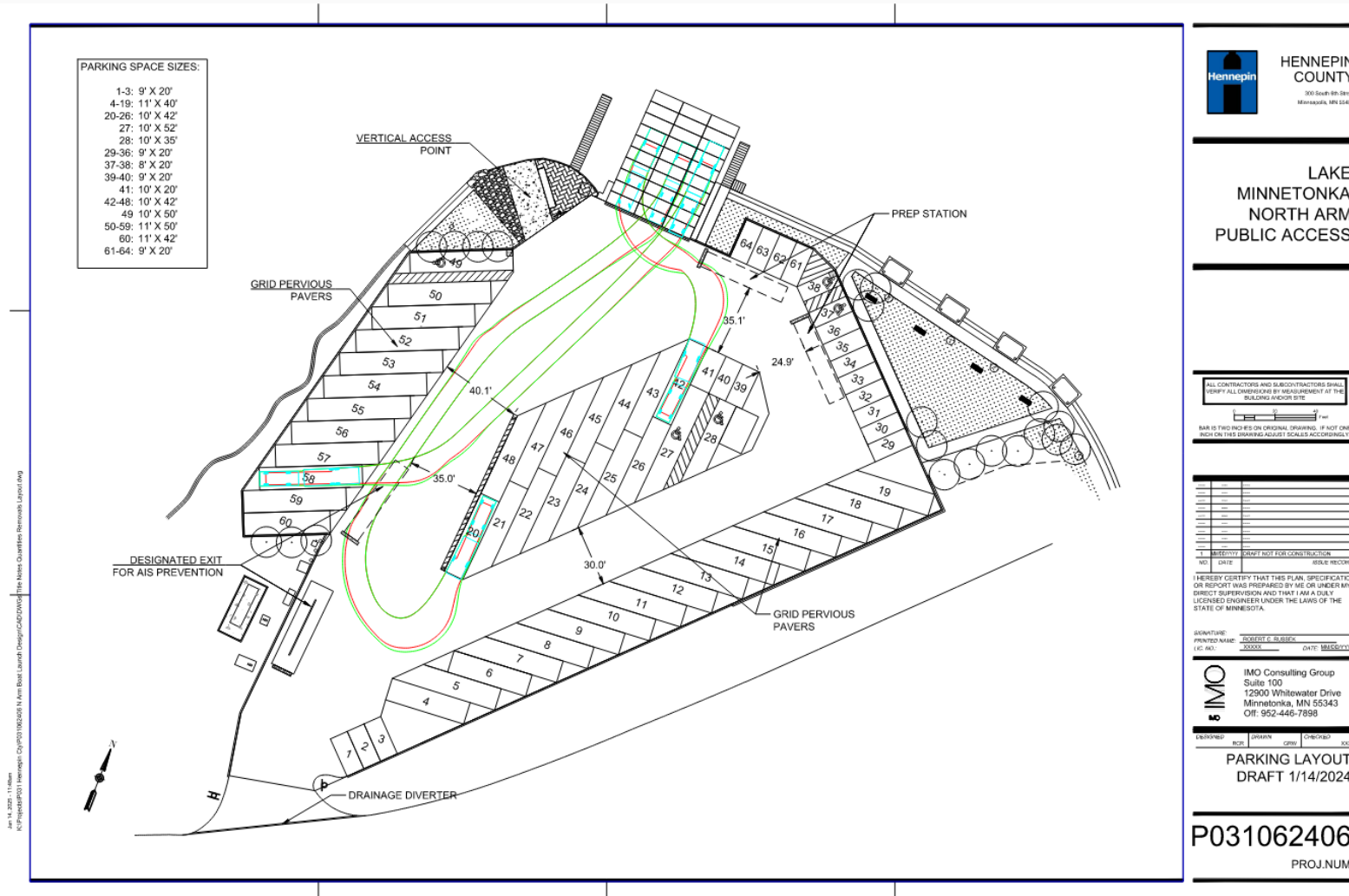
North Arm Public Access Vertical Access Point



North Arm Public Access Ramp

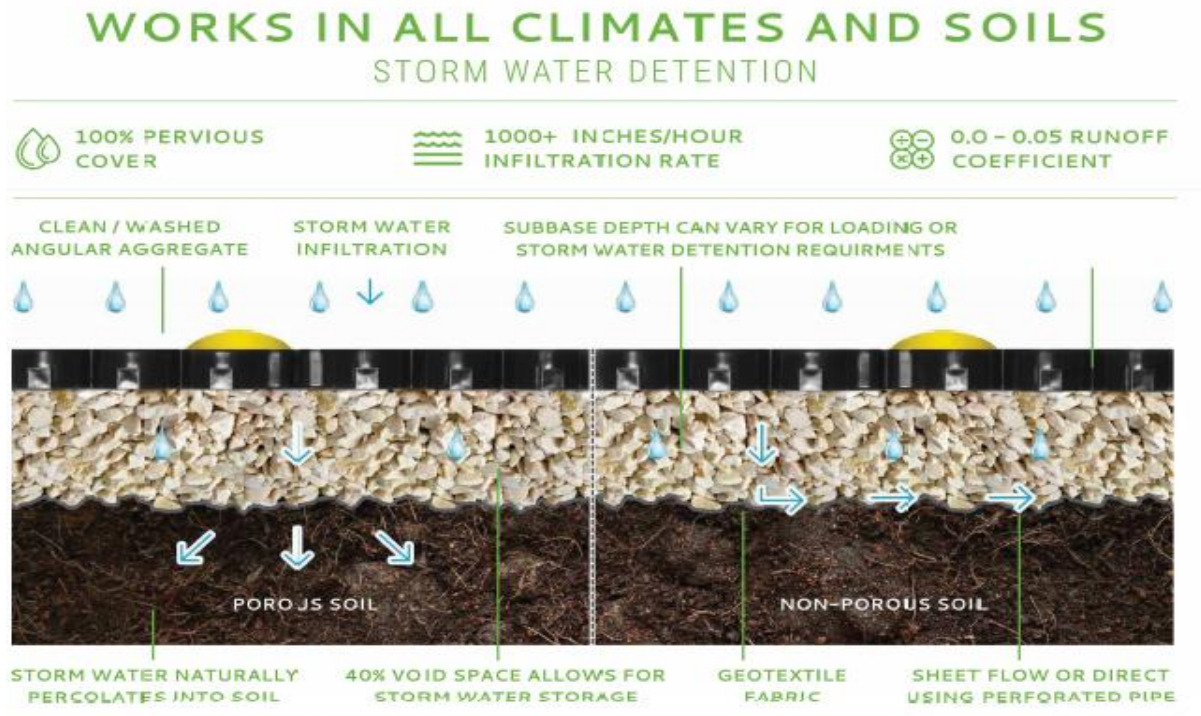


North Arm Public Access Parking & Circulation



Pervious Paver Information

- Permeable Pavement in Parking Areas
 - Recycled Plastic Grid with Aggregate Fill
 - Sand Filter below provide additional filtration of pollutants
- Sump Catchbasins/Swirl Concentrators in Key Locations
 - Collect sediment and floatables from remaining areas



Pervious Paver Information



Made from 100% post-consumer recycled HDPE.

100% Permeable. Up to 100% of runoff water pollutants are removed via bioremediation.

Impact Scorecard

MEASURE THE DIFFERENCE

 26,000 SF

CO2 SAVED

168 TONS 

PLASTIC RECYCLED

35K LBS 

STORMWATER DETAINED

11K CUBIC FT 



Information Provided By Truegrid

Tons of CO2 emissions from the manufacturing of cement are eliminated. Millions of lbs of plastic are kept out of landfill and recycled from a consumable to a 60 year life cycle useful product. Detention is added and flooding from stormwater is reduced. Coal tar & asphalt toxins are eliminated.

- Approximately 30% of the lot will be permeable (0% today)
- Captures 100% of runoff resulting from a 1" Storm Event
 - Accounts for 90% of our storms



North Arm Public Access Redesign



Q & A



Learn more and sign up for updates: hennepin.us/north-arm



North Arm Public Access Redesign



Thank you for attending this virtual public meeting.

For additional information please contact:

Nguyen Hoang

Nguyen.hoang@hennepin.us



Learn more and sign up for updates: hennepin.us/north-arm

