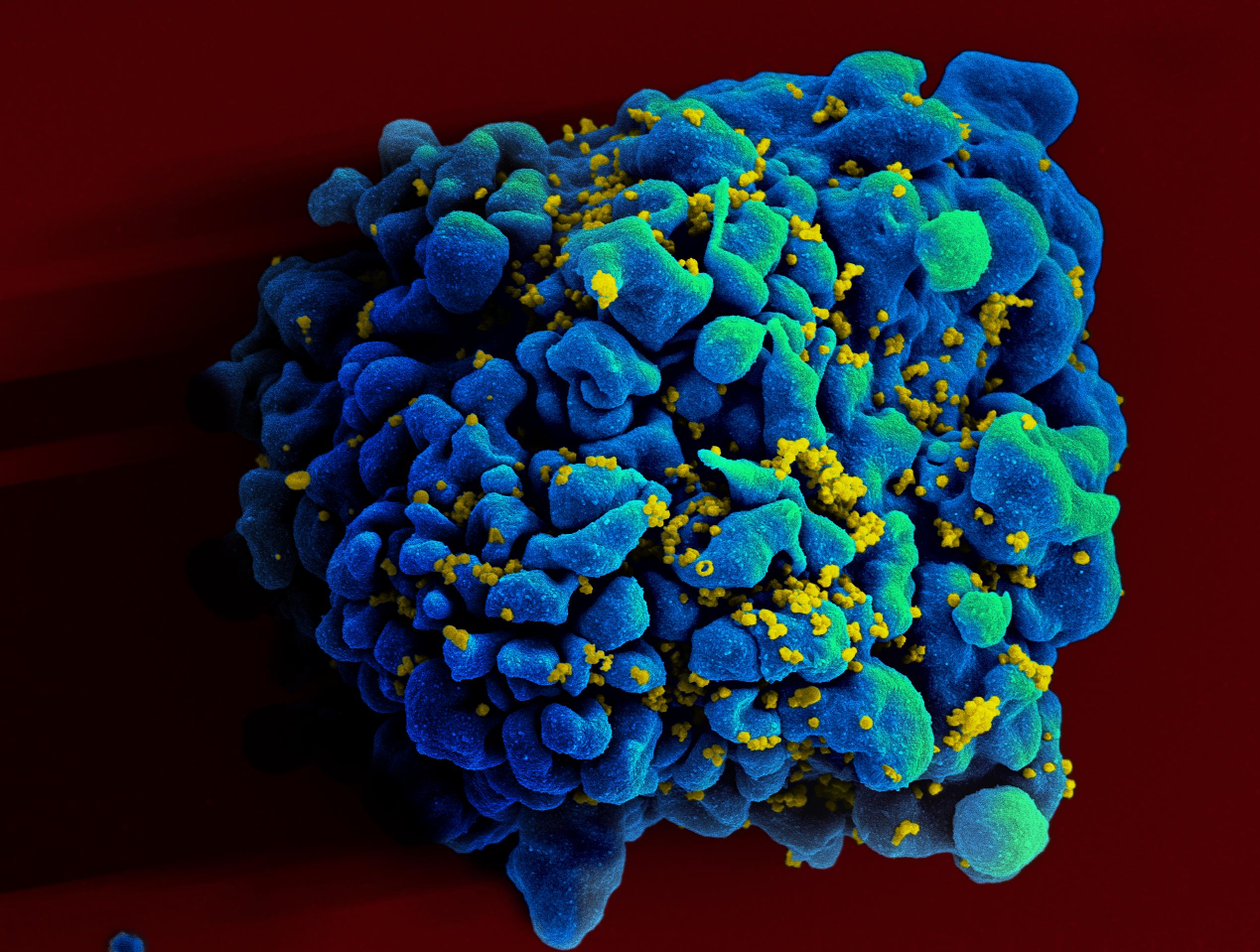




HENNEPIN COUNTY

MINNESOTA

Public Health



2019 Ryan White MSP-TGA Housing Presentation

Aaron D. Peterson | Hennepin County Public Health

Photo: human Immunodeficiency virus (HIV)-infected H9 T-cell; HIV virions in yellow. The uneven surface round bumps on cell surface represent sites of assembly and budding of additional HIV virions.

National Institute of Allergy and Infectious Diseases, National Institutes of Health, United States Department of Health and Human Services



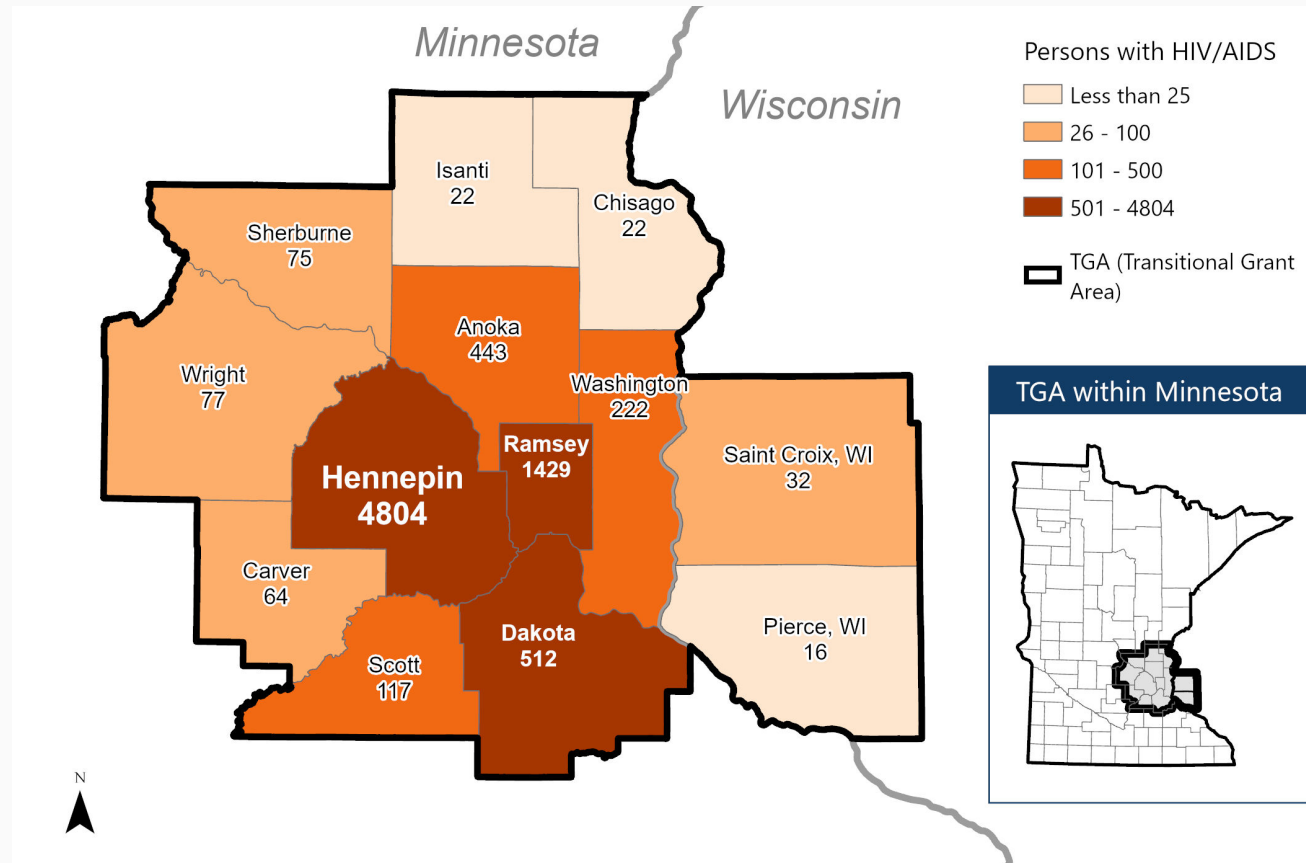
Background

HIV Data in Minnesota

- CAREWare
 - Program for all Ryan White programs
- eHARS
 - Enhanced HIV/AIDS Reporting System
 - Minnesota Department of Health (MDH) Surveillance
- EvaluationWeb
 - Publicly funded HIV tests

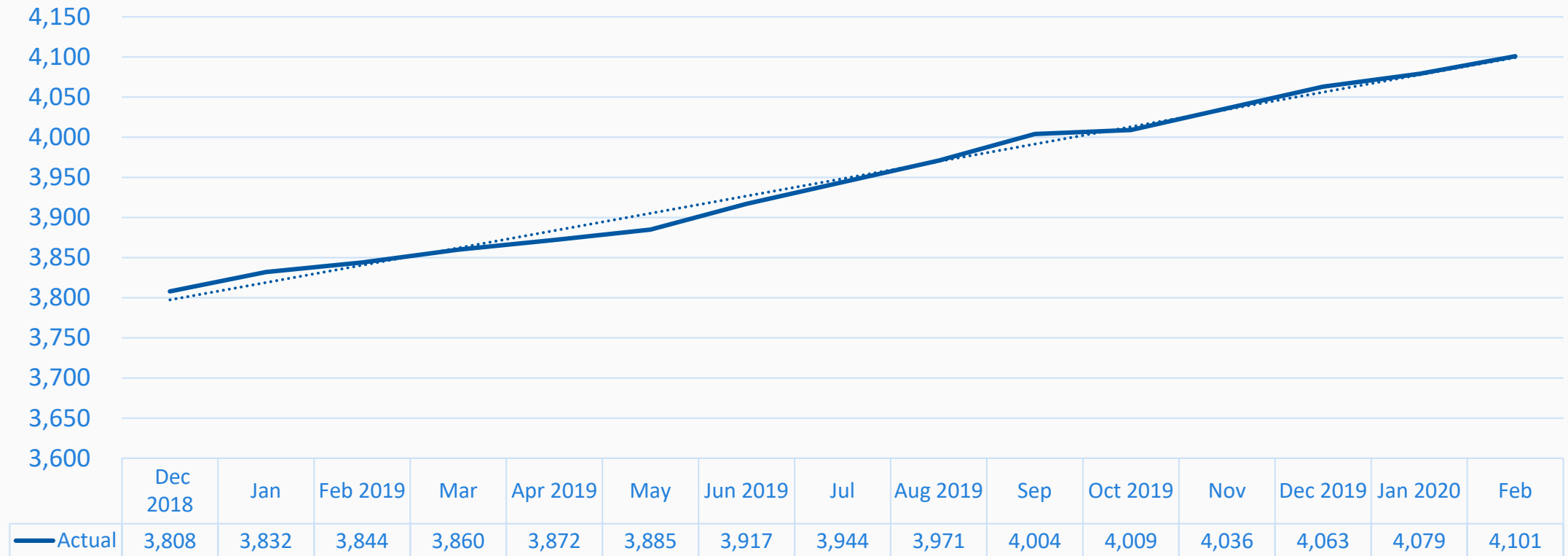


Urban, suburban, and rural counties



HIV prevalence by county for the Minneapolis-St. Paul Transitional Grant Area, as of December 31, 2019

Increasing ≈ 21 active clients per month



Increased enrollment means more public health intervention opportunities

Year	Ryan White enrollment	HIV prevalence	Percentage of people with HIV enrolled in Ryan White
2016	3,628	7,339	49.4%
2017	3,708	7,514	49.3%
2018	3,808	7,672	49.6%
2019	4,063	7,836	51.9%
2023 Goal	-	-	60.0%

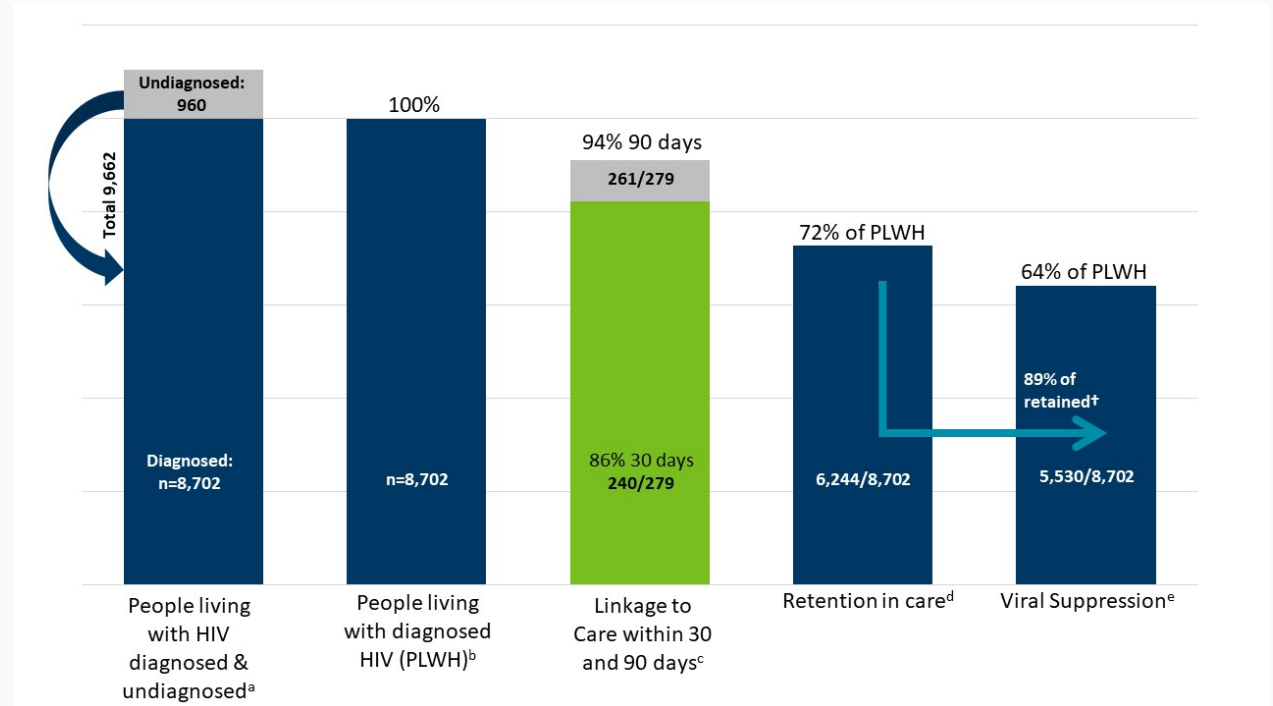
Ryan White providers are collecting complete housing status data

Year	Ryan White clients missing housing status	Total Ryan White clients	Percentage of clients missing a housing status
2016	664	3,628	18.3%
2017	72	3,708	1.9%
2018	64	3,808	1.7%
2019	32	4,063	0.8%

Ryan White housing data Minneapolis-St. Paul Transitional Grant Area

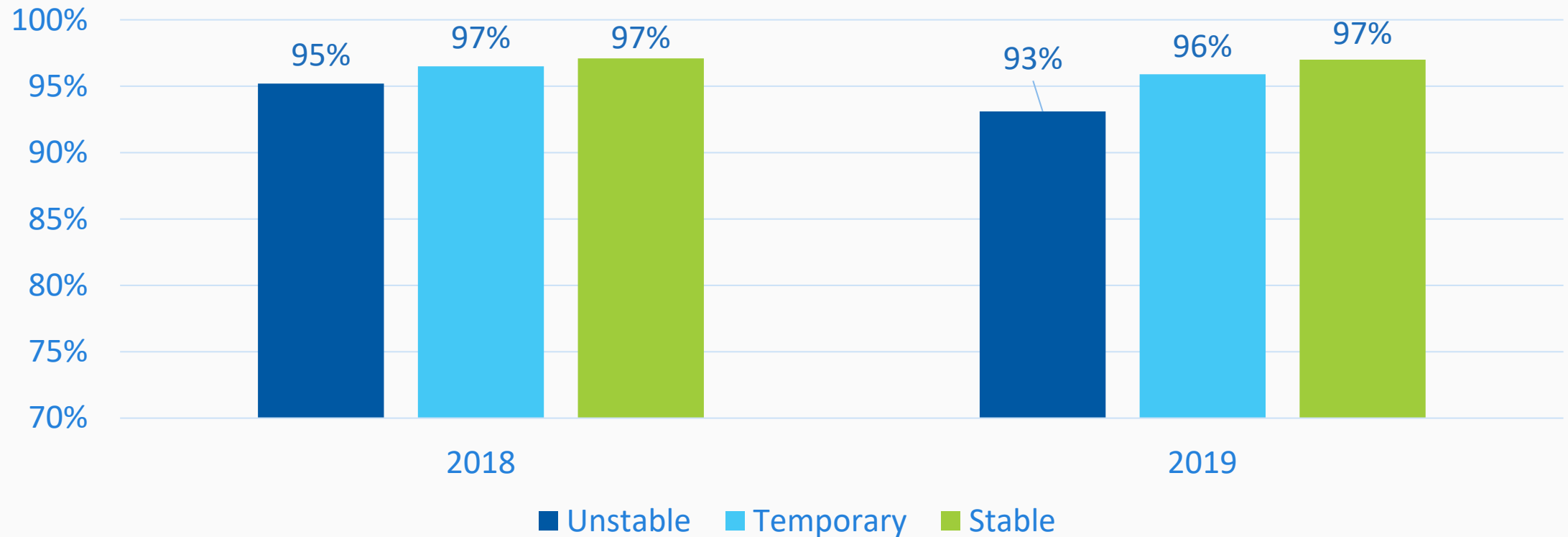
Housing continuum and HIV care continuum

- Unstable
 - Unsheltered or sheltered homelessness
 - Couch surfing
- Temporary
 - Transitional housing program
- Stable
 - Permanent housing solution

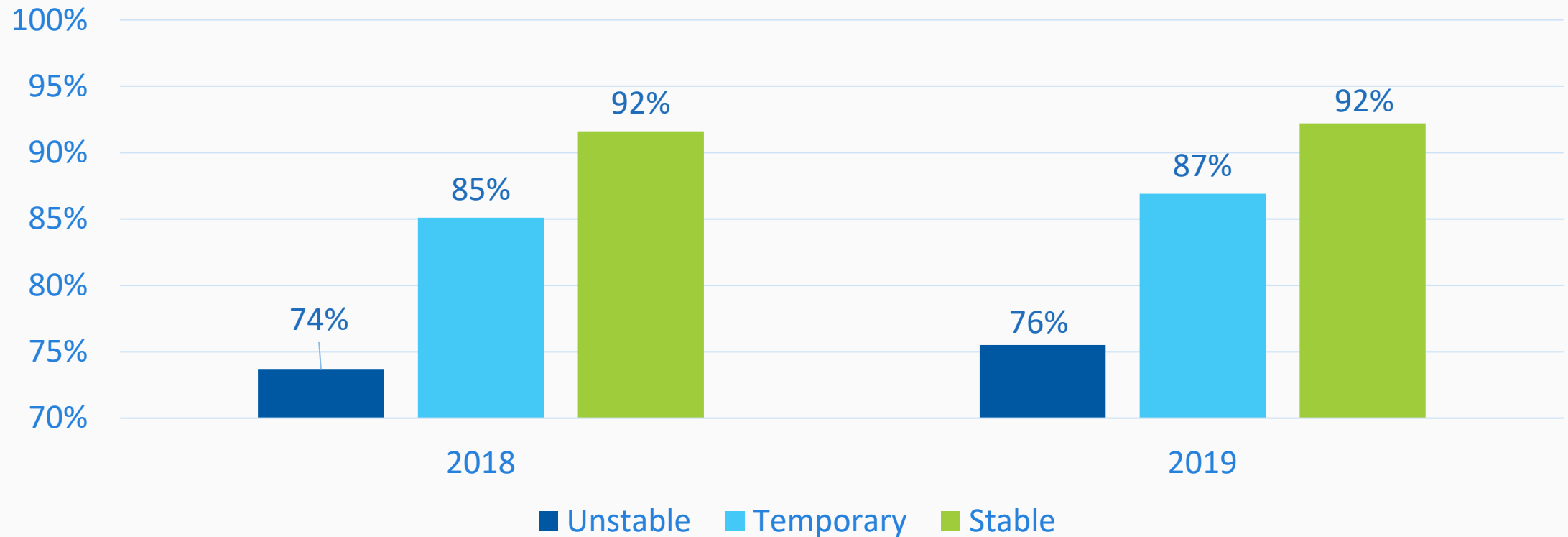


Credit: Minnesota Department of Health,
2018 HIV care continuum (statewide)

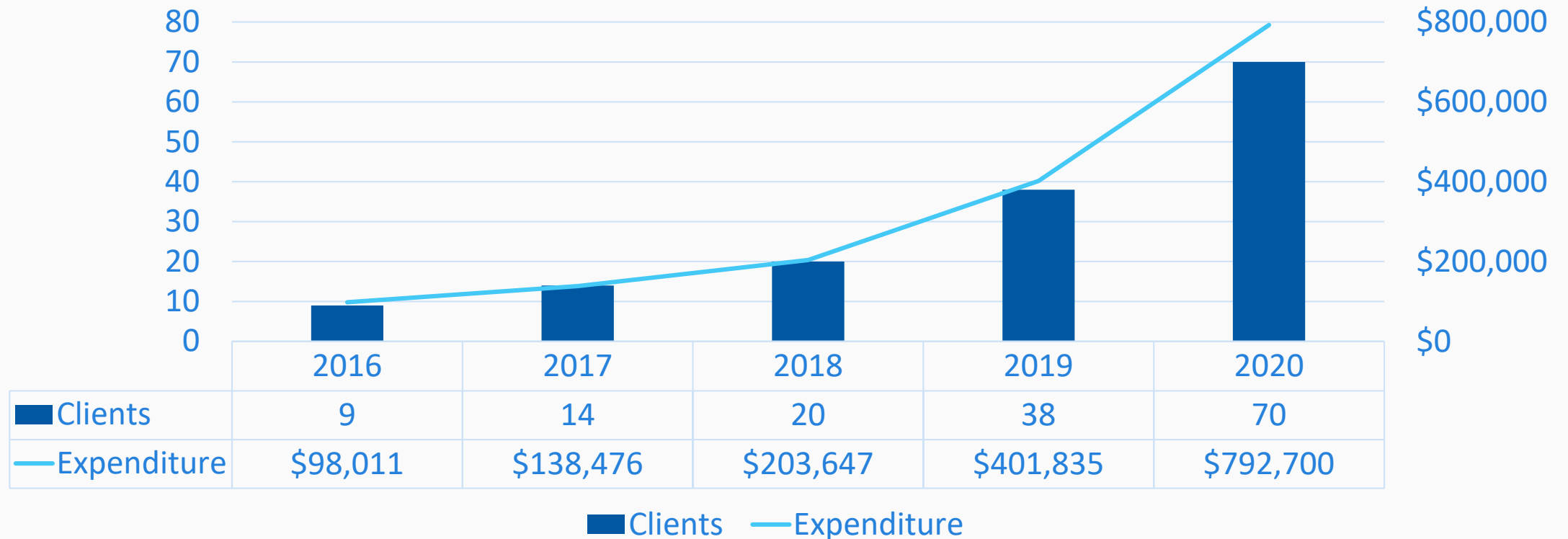
More than 90% of unstably housed clients are still retained in HIV medical care



Advancement along the housing continuum empowers people with HIV to achieve viral suppression



Ryan White Program continues to increase transitional housing resources



2020 is allocation and estimated clients



An estimated 260 Ryan White clients need an immediate housing solution

- This is 6% of the 4,063 MSP-TGA Ryan White clients.
- Who are these these 260 Ryan White clients?
- There are 411 (10%) Ryan White clients who are temporarily housed and need a permanent housing solution.



A client's housing situation can be dynamic

Of 260 clients unstably housed as of Dec 31, 2019

- 140 had starting and ending unstable housing statuses
- Of remaining 120:
 - 90 had stable housing as their beginning housing status
 - 30 had temporary housing as their beginning housing status
- This data depends on consistent definitions and client information across providers. Interpret with caution.

American Indian, Black (not African-born), and Hispanic clients experienced higher unstable housing rates in 2019

Population by race/ethnicity	Number of clients	Stable	Temporary	Unstable	Missing
Hispanic, all races	479	392 (82%)	53 (11%)	32 (7%)	2 (0.4%)
American Indian	67	38 (57%)	15 (22%)	14 (21%)	0 (0%)
Asian/Pacific Islander	102	89 (87%)	9 (9%)	4 (4%)	0 (0%)
Black (not African-born)	1,247	967 (78%)	152 (12%)	114 (9%)	14 (1%)
Black (African-born)	595	536 (91%)	32 (5%)	21 (4%)	6 (1%)
White	1,418	1,221 (86%)	131 (9%)	60 (4%)	6 (0.4%)
Multi-racial	144	111 (77%)	18 (13%)	14 (10%)	1 (0.7%)
Other/Unknown	11	6 (55%)	1 (9%)	1 (9%)	3 (27%)
All Clients	4,063	3,360 (83%)	411 (10%)	260 (6%)	32 (0.8%)



American Indian, Black (not African-born), and Hispanic clients experienced higher unstable housing rates in 2019

Population by race/ethnicity	Number of clients	Stable	Temporary	Unstable	Missing
Hispanic, all races	479	392 (82%)	53 (11%)	32 (7%)	2 (0.4%)
American Indian	67	38 (57%)	15 (22%)	14 (21%)	0 (0%)
Asian/Pacific Islander	102	89 (87%)	9 (9%)	4 (4%)	0 (0%)
Black (not African-born)	1,247	967 (78%)	152 (12%)	114 (9%)	14 (1%)
Black (African-born)	595	536 (91%)	32 (5%)	21 (4%)	6 (1%)
White	1,418	1,221 (86%)	131 (9%)	60 (4%)	6 (0.4%)
Multi-racial	144	111 (77%)	18 (13%)	14 (10%)	1 (0.7%)
Other/Unknown	11	-	-	-	-
All Clients	4,063	3,360 (83%)	411 (10%)	260 (6%)	32 (0.8%)



Unstable housing is concentrated among young adults

Population by age group	Number of clients	Stable	Temporary	Unstable	Missing
Under 18	50	47 (94%)	3 (6%)	0 (0%)	0 (0%)
18 – 24	129	84 (67%)	22 (21%)	15 (14%)	4 (4%)
25 – 29	306	224 (74%)	51 (17%)	29 (10%)	2 (1%)
30 – 34	411	315 (77%)	52 (13%)	41 (10%)	3 (1%)
35 – 39	448	343 (77%)	58 (13%)	45 (10%)	2 (0.5%)
40 – 44	437	340 (79%)	54 (13%)	38 (9%)	5 (1%)
45 – 49	448	381 (85%)	41 (9%)	24 (5%)	2 (0.5%)
50 – 54	591	503 (86%)	54 (9%)	26 (4%)	8 (1%)
All Clients	4,063	3,360 (83%)	411 (10%)	260 (6%)	32 (0.8%)



Unstable housing rates decrease with age

Population by age group	Number of clients	Stable	Temporary	Unstable	Missing
50 – 54	591	503 (86%)	54 (9%)	26 (4%)	8 (1%)
55 – 59	540	483 (90%)	32 (6%)	23 (4%)	2 (0.4%)
60 – 64	343	308 (91%)	21 (6%)	11 (3%)	3 (1%)
65 – 69	225	207 (92%)	14 (6%)	4 (2%)	0 (0%)
70 – 74	83	78 (94%)	3 (4%)	2 (2%)	0 (0%)
75 – 79	29	28 (97%)	1 (3%)	0 (0%)	0 (0%)
80 +	14	11 (85%)	2 (15%)	0 (0%)	1 (7%)
Missing	9	-	-	-	-
All Clients	4,063	3,360 (83%)	411 (10%)	260 (6%)	32 (0.8%)

Unstable housing rates are not meaningfully different between men and women

Population by gender	Number of clients	Stable	Temporary	Unstable	Missing
Men	2,757	2,267 (83%)	298 (11%)	171 (6%)	21 (1%)
Women	1,189	1,011 (86%)	98 (8%)	70 (6%)	10 (1%)
Transgender †	108	74 (69%)	15 (14%)	18 (17%)	1 (1%)
Unknown	9	-	-	-	-
All Clients	4,063	3,360 (83%)	411 (10%)	260 (6%)	32 (0.8%)

† Includes transmen, transwomen, and people who identify as a different gender identity



Unstable housing was concentrated in Hennepin and Ramsey counties in 2019

Population by county of residency	Number of clients	Stable	Temporary	Unstable	<i>Missing</i>
Hennepin County	2,577	2,097	274	182	24
Ramsey County	830	688	82	53	7
Suburban counties†	592	523	47	22	0
Outer six counties‡	64	52	8	3	1
All Clients	4,063	3,360	411	260	32

†Anoka, Carver, Dakota, Scott, Washington

‡Chisago, Isanti, Pierce (WI), Sherburne, St Croix (WI), Wright



Ending the epidemic through housing

Half (131/260) of the Ryan White clients experiencing unstable housing are young adults (ages 18-39)

Population by age group	Number of clients	Stable	Temporary	Unstable	Missing
Under 18	50	47 (94%)	3 (6%)	0 (0%)	0 (0%)
18 – 24	129	84 (67%)	25 (20%)	16 (13%)	4 (4%)
25 – 29	306	224 (74%)	51 (17%)	29 (10%)	2 (1%)
30 – 34	411	315 (77%)	52 (13%)	41 (10%)	3 (1%)
35 – 39	448	343 (77%)	58 (13%)	45 (10%)	2 (0.5%)
40 – 44	437	340 (79%)	54 (13%)	38 (9%)	5 (1%)
45 – 49	448	381 (85%)	41 (9%)	24 (5%)	2 (0.5%)
50 – 54	591	503 (86%)	54 (9%)	26 (4%)	8 (1%)
All Clients	4,063	3,360 (83%)	411 (10%)	260 (6%)	32 (0.8%)



These young adults are disproportionately people of color

Ages 18 – 39 for select race/ethnicities	Number of clients	Unstable
Hispanic, all races	183	15 (8%)
Black (not African-born)	191	57 (13%)
Black (African-born)	183	9 (5%)
White	341	30 (9%)
All Clients, regardless of race/ethnicity and age	4,063	260 (6%)

- 67% (10/15) and 65% (37/57) for Hispanic and Black (not African-born) clients, respectively, are men who have sex with men (MSM)

HIV and hepatitis A outbreak among people who inject drugs

HIV outbreak in Hennepin and Ramsey counties

- As of August 2020, there have been at least 26 cases (and an additional 2 probable cases) identified in this cluster.
- People at high risk for HIV in this outbreak include:
 - Sex partners or syringe-sharing partners of people known to be living with HIV
 - People who inject drugs, along with their sex partners and needle/equipment sharing partners
 - People who exchange sex for income or other items they need
 - People who have experienced or are currently experiencing homelessness



Hepatitis A outbreak

- As of June 5, 2020, there have been 114 cases and one death associated with the outbreak related to drug use
- Historically, only 20 cases per year
- On March 9, 2020, Hennepin County Public Health merged the HIV outbreak ICS and the hepatitis A incident command structure into one emergency response



Resources and response

For additional information about the HIV outbreak, contact:

Jonathan Hanft

Ryan White HIV/AIDS Program

Hennepin County Public Health

Jonathan.Hanft@hennepin.us

612-348-5964

Hennepin County

2019 Ryan White MSP-TGA Housing Presentation | October 13, 2020

There's an outbreak of HIV among people who use injection drugs in Hennepin County.

Protect yourself from HIV

To stay healthy, and prevent the spread of HIV in our community, please follow these three steps.



Use a clean needle every time you inject



Safely dispose of used needles



Get tested for HIV

Help is available

- **Health Care for the Homeless**
612-348-5553
hennepin.us/residents/health-medical/clinics-services
- **Red Door Clinic**
612-543-5555
www.reddoorclinic.org

Hennepin County
Public Health



02/2020

Download HIV outbreak posters

Protect yourself from HIV flyers:

- [2 per page flyer](#)
- [4 per page flyer](#)

Protect yourself from HIV posters:

- [8.5X11 poster](#)
- [11X17 poster](#)

Aaron D. Peterson

aaron.peterson@hennepin.us, 612-348-7414

Ryan White HIV/AIDS Program
Hennepin County Public Health
525 Portland Ave, MC L963
Minneapolis, MN 55415

